

High Reliability Serial EEPROMs



SPI BUS Serial EEPROMs

BR25□□□□family

BR25L010-W series, BR25L020-W series, BR25L040-W series, BR25L080-W series, BR25L160-W series, BR25L320-W series, BR25L640-W series

No. 10001EBT05

● Description

BR25L□□□-W series is a serial EEPROM of SPI BUS interface method.

● Features

- High speed clock action up to 5MHz (Max.)
- Wait function by HOLD terminal
- Part or whole of memory arrays settable as read only memory area by program
- 1.8 ~ 5.5V single power source action most suitable for battery use
- Page write mode useful for initial value write at factory shipment
- Highly reliable connection by Au pad and Au wire
- For SPI bus interface (CPOL, CPHA) = (0, 0), (1, 1)
- Auto erase and auto end function at data rewrite
- Low current consumption
 - At write action (5V) : 1.5mA (Typ.)
 - At read action (5V) : 1.0mA (Typ.)
 - At standby action (5V) : 0.1μA (Typ.)
- Address auto increment function at read action
- Write mistake prevention function
 - Write prohibition at power on
 - Write prohibition by command code (WRDI)
 - Write prohibition by \overline{WP} pin
 - Write prohibition block setting by status registers (BP1, BP0)
 - Write mistake prevention function at low voltage
- SOP8, SOP-J8, SSOP-B8, TSSOP-B8, MSOP8 TSSOP-B8J package *1 *2
- Data at shipment Memory array : FFh, status register WPEN, BP1, BP0 : 0
- Data kept for 40 years
- Data rewrite up to 1,000,000 times

*1 BR25L080/160-W : SOP8, SOP-J8, SSOP-B8, TSSOP-B8

*2 BR25L320/640-W : SOP8, SOP-J8

● Page write

| Number of pages | 16 Byte | 32 Byte |
|-----------------|--|--|
| Product number | BR25L010-W BR25L020-W BR25L040-W | BR25L080-W BR25L160-W BR25L320-W BR25L640-W |

● BR25L series

| Capacity | Bit format | Type | Power source voltage | SOP8 | SOP-J8 | SSOP-B8 | TSSOP-B8 | MSOP8 | TSSOP-B8J |
|----------|------------|------------|----------------------|------|--------|---------|----------|-------|-----------|
| | | | | F | FJ | FV | FVT | FVM | FVJ |
| 1Kbit | 128 X 8 | BR25L010-W | 1.8 ~ 5.5V | ● | ● | ● | ● | ● | ● |
| 2Kbit | 256 X 8 | BR25L020-W | 1.8 ~ 5.5V | ● | ● | ● | ● | ● | ● |
| 4Kbit | 512 X 8 | BR25L040-W | 1.8 ~ 5.5V | ● | ● | ● | ● | ● | ● |
| 8Kbit | 1K X 8 | BR25L080-W | 1.8 ~ 5.5V | ● | ● | ● | ● | | |
| 16Kbit | 2K X 8 | BR25L160-W | 1.8 ~ 5.5V | ● | ● | ● | ● | | |
| 32Kbit | 4K X 8 | BR25L320-W | 1.8 ~ 5.5V | ● | ● | | | | |
| 64Kbit | 8K X 8 | BR25L640-W | 1.8 ~ 5.5V | ● | ● | | | | |

● Absolute maximum ratings (Ta = 25°C)

| Parameter | Symbol | Limits | Unit |
|-----------------------------|--------|-------------------|------|
| Impressed voltage | VCC | -0.3 ~ +6.5 | V |
| Permissible dissipation | Pd | 450(SOP8) *1 | mW |
| | | 450(SOP-J8) *2 | |
| | | 300(SSOP-B8) *3 | |
| | | 330(TSSOP-B8) *4 | |
| | | 310(MSOP8) *5 | |
| | | 310(TSSOP-B8J) *6 | |
| Storage temperature range | Tstg | -65 ~ +125 | °C |
| Operating temperature range | Topr | -40 ~ +85 | °C |
| Terminal voltage | - | -0.3 ~ VCC+0.3 | V |

*When using at Ta = 25°C or higher, 4.5mW (*1, *2), 3.0mW (*3), 3.3mW(*4), 3.1mW (*5, *6) to be reduced per 1°C

● Recommended action conditions

| Parameter | Symbol | Limits | Unit |
|----------------------|--------|-----------|------|
| Power source voltage | VCC | 1.8 ~ 5.5 | V |
| Input voltage | Vin | 0 ~ VCC | |

● Memory cell characteristics (Ta=25°C, VCC=1.8 ~ 5.5V)

| Parameter | Limits | | | Unit |
|---------------------------------|-----------|------|------|-------|
| | Min. | Typ. | Max. | |
| Number of data rewrite times *1 | 1,000,000 | - | - | Times |
| Data hold years *1 | 40 | - | - | Years |

*1:Not 100% TESTED

● Input / output capacity (Ta=25°C, frequency=5MHz)

| Parameter | Symbol | Conditions | Min. | Max. | Unit |
|-------------------|--------|------------|------|------|------|
| Input capacity *1 | CIN | VIN=GND | - | 8 | pF |
| Output capacity*1 | COU | VOUT=GND | - | 8 | pF |

*1:Not 100% TESTED

● Electrical characteristics (Unless otherwise specified, Ta = -40 ~ +85°C, VCC = 1.8 ~ 5.5V)

| Parameter | Symbol | Limits | | | Unit | Conditions |
|-------------------------------------|--------|----------|------|----------|------|--|
| | | Min. | Typ. | Max. | | |
| "H" input voltage 1 | VIH1 | 0.7x VCC | - | VCC +0.3 | V | 1.8≤VCC≤5.5V |
| "L" input voltage 1 | VIL1 | -0.3 | - | 0.3x VCC | V | 1.8≤VCC≤5.5V |
| "L" output voltage 1 | VOL1 | 0 | - | 0.4 | V | IOL=2.1mA(VCC=2.5V ~ 5.5V) |
| "L" output voltage 2 | VOL2 | 0 | - | 0.2 | V | IOL=150μA(VCC=1.8V ~ 2.5V) |
| "H" output voltage 1 | VOH1 | VCC -0.5 | - | VCC | V | IOH=-0.4mA(VCC=2.5V ~ 5.5V) |
| "H" output voltage 2 | VOH2 | VCC -0.2 | - | VCC | V | IOH=-100μA(VCC=1.8V ~ 2.5V) |
| Input leak current | ILI | -1 | - | 1 | μA | VIN=0 ~ VCC |
| Output leak current | ILO | -1 | - | 1 | μA | VOUT=0 ~ VCC,CS=VCC |
| Current consumption at write action | Icc1 | - | - | 1.0 | mA | VCC=1.8V,fSCK=2MHz,tE/W=5ms Byte write Page write Write status register |
| | Icc2 | - | - | 2.0 | mA | VCC=2.5V,fSCK=5MHz,tE/W=5ms Byte write Page write Write status register |
| | Icc3 | - | - | 3.0 | mA | VCC=5.5V,fSCK=5MHz,tE/W=5ms Byte write Page write Write status register |
| Current consumption at read action | Icc4 | - | - | 1.5 | mA | VCC=2.5V,fSCK=5MHz Read Read status register |
| | Icc5 | - | - | 2.0 | mA | VCC=5.5V,fSCK=5MHz Read Read status register |
| Standby current | ISB | - | - | 2 | μA | VCC=5.5V CS=HOLD=WP=VCC,SCK=SI=VCC or =GND,SO=OPEN |

* Radiation resistance design is not made.

● Block diagram



Fig.1 Block diagram

*1 7bit : BR25L010-W
 8bit : BR25L020-W
 9bit : BR25L040-W
 10bit : BR25L080-W
 11bit : BR25L160-W
 12bit : BR25L320-W
 13bit : BR25L640-W

● Pin assignment and description

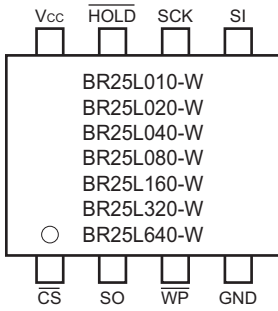


Fig. 2 Pin assignment diagram

| Terminal name | Input/output | Function |
|---------------|--------------|---|
| Vcc | – | Power source to be connected |
| GND | – | All input / output reference voltage, 0V |
| CS | Input | Chip select input |
| SCK | Input | Serial clock input |
| SI | Input | Start bit, ope code, address, and serial data input |
| SO | Output | Serial data output |
| HOLD | Input | Hold input Command communications may be suspended temporarily (HOLD status). |
| WP | Input | Write protect input Write command is prohibited.*1 Write status register command is prohibited. |

*1:BR25L010/020/040-W

● Operating timing characteristics

(Ta = -40 ~ +85°C, unless otherwise specified, load capacity CL1 100pF)

| Parameter | Symbol | 1.8≤Vcc<2.5V | | | 2.5≤Vcc<5.5V | | | Unit |
|-------------------------------------|--------|--------------|------|------|--------------|------|------|------|
| | | Min. | Typ. | Max. | Min. | Typ. | Max. | |
| SCK frequency | fSCK | – | – | 2 | – | – | 5 | MHz |
| SCK high time | tSCKWH | 200 | – | – | 85 | – | – | ns |
| SCK low time | tSCKWL | 200 | – | – | 85 | – | – | ns |
| CS high time | tCS | 200 | – | – | 85 | – | – | ns |
| CS setup time | tCSS | 200 | – | – | 90 | – | – | ns |
| CS hold time | tCSH | 200 | – | – | 85 | – | – | ns |
| SCK setup time | tSCKS | 200 | – | – | 90 | – | – | ns |
| SCK hold time | tSCKH | 200 | – | – | 90 | – | – | ns |
| SI setup time | tDIS | 40 | – | – | 20 | – | – | ns |
| SI hold time | tDIH | 50 | – | – | 40 | – | – | ns |
| Data output delay time 1 | tPD1 | – | – | 150 | – | – | 70 | ns |
| Data output delay time 2 (CL2=30pF) | tPD2 | – | – | 145 | – | – | 55 | ns |
| Output hold time | tOH | 0 | – | – | 0 | – | – | ns |
| Output disable time | tOZ | – | – | 250 | – | – | 100 | ns |
| HOLD setting setup time | tHFS | 120 | – | – | 60 | – | – | ns |
| HOLD setting hold time | tHFH | 90 | – | – | 40 | – | – | ns |
| HOLD release setup time | tHRS | 120 | – | – | 60 | – | – | ns |
| HOLD release hold time | tHRH | 140 | – | – | 70 | – | – | ns |
| Time from HOLD to output High-Z | tHOZ | – | – | 250 | – | – | 100 | ns |
| Time from HOLD to output change | tHPD | – | – | 150 | – | – | 70 | ns |
| SCK rise time *1 | tRC | – | – | 1 | – | – | 1 | μs |
| SCK fall time *1 | tFC | – | – | 1 | – | – | 1 | μs |
| OUTPUT rise time *1 | tRO | – | – | 100 | – | – | 50 | ns |
| OUTPUT fall time *1 | tFO | – | – | 100 | – | – | 50 | ns |
| Write time | tE/W | – | – | 5 | – | – | 5 | ms |

*1NOT 100% TESTED

● AC measurement conditions

| Parameter | Symbol | Limits | | | Unit |
|---------------------------------|--------|---------------|------|------|------|
| | | Min. | Typ. | Max. | |
| Load capacity 1 | CL1 | – | – | 100 | pF |
| Load capacity 2 | CL2 | – | – | 30 | pF |
| Input rise time | – | – | – | 50 | ns |
| Input fall time | – | – | – | 50 | ns |
| Input voltage | – | 0.2Vcc/0.8Vcc | | | V |
| Input / output judgment voltage | – | 0.3Vcc/0.7Vcc | | | V |

● Sync data input / output timing



Fig. 3 Input timing

SI is taken into IC inside in sync with data rise edge of SCK. Input address and data from the most significant bit MSB.



Fig. 4 Input / output timing

SO is output in sync with data fall edge of SCK. Data is output from the most significant bit MSB.



Fig. 5 HOLD timing

● Characteristic data (The following characteristic data are Typ. values.)



Fig.6 "H" input voltage $V_{IH}(CS, SCK, SI, HOLD, WP)$



Fig.7 "L" input voltage $V_{IL}(CS, SCK, SI, HOLD, WP)$



Fig.8 "L" output voltage $V_{OL-IOL}(V_{CC}=1.8V)$



Fig.9 "H" output voltage $V_{OH-IOH}(V_{CC}=1.8V)$



Fig.10 "L" output voltage $V_{OL-IOL}(V_{CC}=2.5V)$



Fig.11 "H" output voltage $V_{OH-IOH}(V_{CC}=2.5V)$

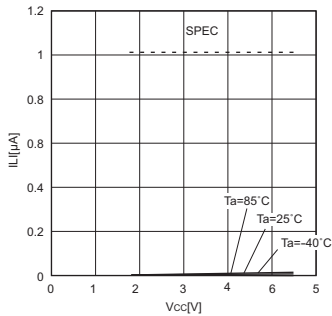


Fig.12 Input leak current $I_{LI}(CS, SCK, SI, WP, HOLD)$

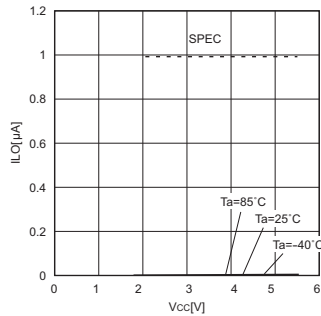


Fig.13 Output leak current $I_{LO}(SO)$

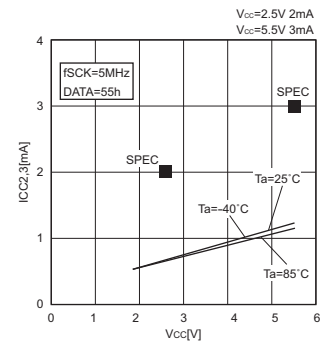


Fig.14 Current consumption at WRITE operation $ICC_{1,2,3}(WRITE, PAGE WRITE, WRSR, f_{SCK}=5MHz)$
BR25L010-W, BR25L020-W, BR25L040-W

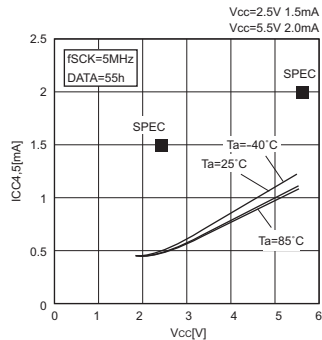


Fig.15 Consumption current at READ operation $ICC_{4,5}(READ, WRSR, f_{SCK}=5MHz)$

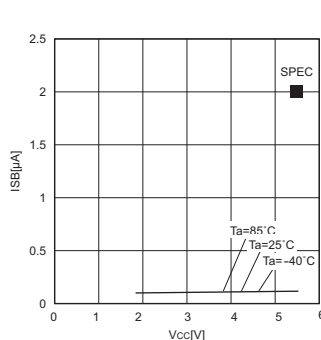


Fig.16 Consumption current at standby operation I_{SB}

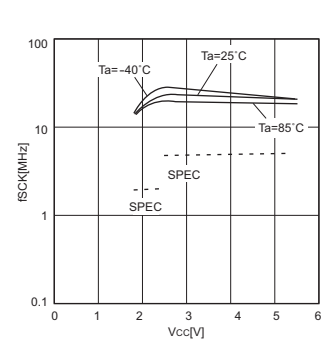


Fig.17 SCK frequency f_{SCK}



Fig.18 tSCK high time t_{SCKWH}



Fig.19 SCK low time t_{SCKWL}

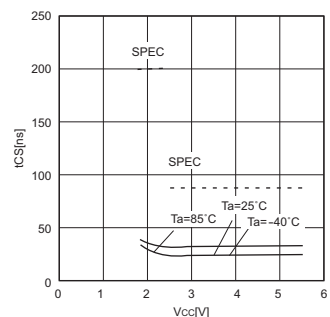


Fig.20 CS high time t_{CS}



Fig.21 CS setup time tCSS



Fig.22 CS hold time tCSH



Fig.23 SI setup time tDIS



Fig.24 SI hold time tDIH



Fig.25 Data output delay time tPD1(CL=100pF)



Fig.26 Data output delay time tPD2(CL=30pF)

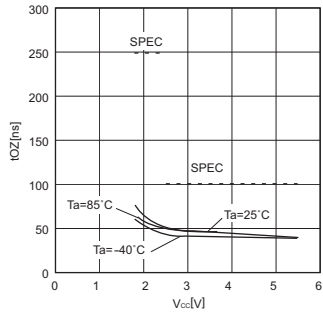


Fig.27 Output disable time tOZ

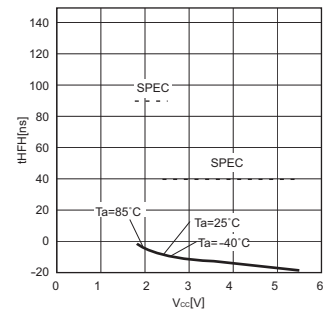


Fig.28 HOLD setting hold time tHFH

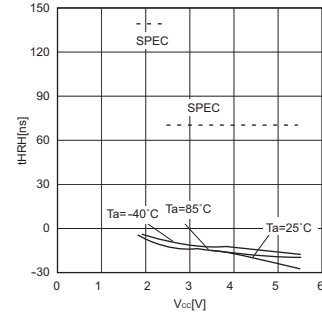


Fig.29 HOLD release hold time tHRH

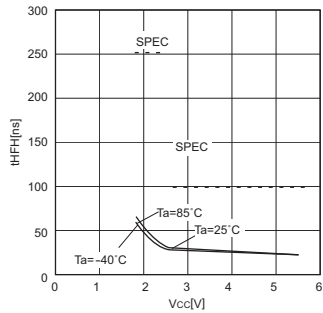


Fig.30 Time from HOLD to output High-Z tHOZ

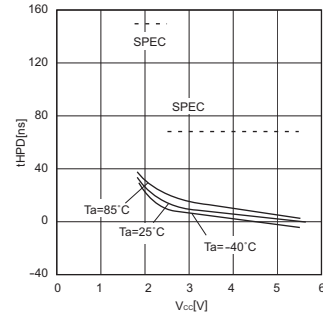


Fig.31 Time from HOLD to output change tHPD

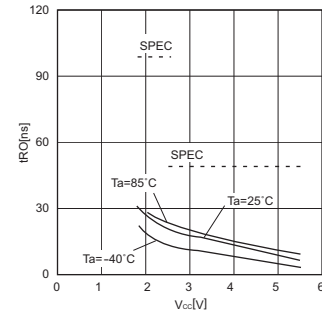


Fig.32 Output rise time tRO



Fig.33 Output fall time



Fig.34 Write cycle time tEW

● Features

○ Status registers

This IC has status registers. The status registers are of 8 bits and express the following parameters.
 BP0 and BP1 can be set by write status register command. These 2 bits are memorized into the EEPROM, therefore are valid even when power source is turned off.
 Rewrite characteristics and data hold time are same as characteristics of the EEPROM.
 WEN can be set by write enable command and write disable command. WEN becomes write disable status when power source is turned off. R/B is for write confirmation, therefore cannot be set externally.
 The value of status register can be read by read status command.

● Status registers

| Product number | bit 7 | bit 6 | bit 5 | bit 4 | bit 3 | bit 2 | bit 1 | bit 0 |
|----------------|-------|-------|-------|-------|-------|-------|-------|-------|
| BR25L010-W | 1 | 1 | 1 | 1 | BP1 | BP0 | WEN | R̄/B |
| BR25L020-W | | | | | | | | |
| BR25L040-W | | | | | | | | |
| BR25L080-W | WPEN | 0 | 0 | 0 | BP1 | BP0 | WEN | R̄/B |
| BR25L160-W | | | | | | | | |
| BR25L320-W | | | | | | | | |
| BR25L640-W | | | | | | | | |

| bit | Memory location | Function | Contents |
|------------|-----------------|---|---|
| WPEN | EEPROM | WP̄ pin enable / disable designation bit WPEN = 0 = invalid WPEN = 1 = valid | This enables / disables the functions of WP̄ pin. |
| BP1 BP0 | EEPROM | EEPROM write disable block designation bit | This designates the write disable area of EEPROM. Write designation areas of product numbers are shown below. |
| WEN | Register | Write and write status register write enable / disable status confirmation bit WEN = 0 = prohibited WEN = 1 = permitted | |
| R̄/B | Register | Write cycle status (READY / BUSY) status confirmation bit R̄/B=0=READY R̄/B=1=BUSY | |

● Write disable block setting

| BP1 | BP0 | Write disable block | | | | | | |
|-----|-----|---------------------|------------|------------|------------|------------|------------|-------------|
| | | BR25L010-W | BR25L020-W | BR25L040-W | BR25L080-W | BR25L160-W | BR25L320-W | BR25L640-W |
| 0 | 0 | None | None | None | None | None | None | None |
| 0 | 1 | 60h-7Fh | C0h-FFh | 180h-1FFh | 300h-3FFh | 600h-7FFh | C00h-FFFh | 1800h-1FFFh |
| 1 | 0 | 40h-7Fh | 80h-FFh | 100h-1FFh | 200h-3FFh | 400h-7FFh | 800h-FFFh | 1000h-1FFFh |
| 1 | 1 | 00h-7Fh | 00h-FFh | 000h-1FFh | 000h-3FFh | 000h-7FFh | 000h-FFFh | 0000h-1FFFh |

○ WP̄ pin

By setting WP̄ = LOW, write command is prohibited. As for BR25L080, 160, 320, 640-W, only when WPEN bit is set "1", the WP̄ pin functions become valid. And the write command to be disabled at this moment is WRSR. As for BR25L010, 020, 040-W, both WRITE and WRSR commands are prohibited.
 However, when write cycle is in execution, no interruption can be made.

| Product number | WRSR | WRITE |
|----------------|---------------------------------------|------------------------|
| BR25L010-W | Prohibition possible | Prohibition possible |
| BR25L020-W | | |
| BR25L040-W | | |
| BR25L080-W | Prohibition possible but WPEN bit "1" | Prohibition impossible |
| BR25L160-W | | |
| BR25L320-W | | |
| BR25L640-W | | |

○ HOLD pin

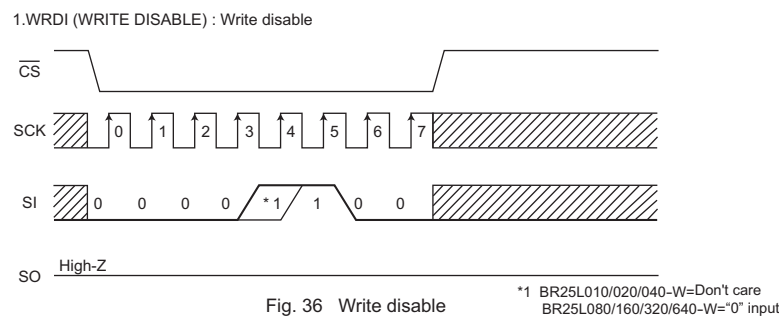
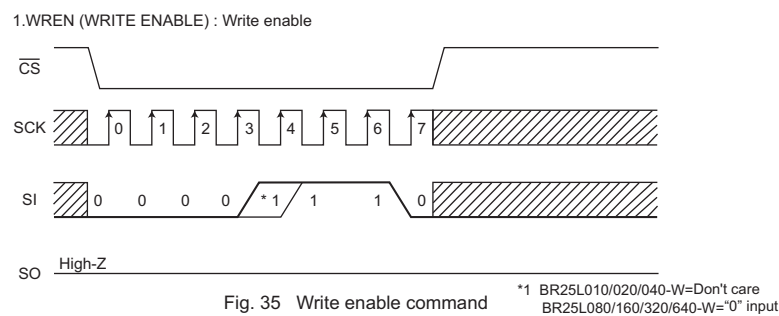
By HOLD pin, data transfer can be interrupted. When SCK = "1", by making HOLD from "1" into "0", data transfer to EEPROM is interrupted. When SCK = "0", by making HOLD from "0" into "1", data transfer is restarted.

● Command mode

| Command | | Contents | Ope code | | | | | |
|---------|-----------------------|-------------------------------|--------------------------|-------|------------|-------|--|------|
| | | | BR25L010-W BR25L020-W | | BR25L040-W | | BR25L080-W BR25L160-W BR25L320-W BR25L640-W | |
| WREN | Write enable | Write enable command | 0000 | * 110 | 0000 | * 110 | 0000 | 0110 |
| WRDI | Write disable | Write disable command | 0000 | * 100 | 0000 | * 100 | 0000 | 0100 |
| READ | Read | Read command | 0000 | * 011 | 0000 | A8011 | 0000 | 0011 |
| WRITE | Write | Write command | 0000 | * 010 | 0000 | A8010 | 0000 | 0010 |
| RDSR | Read status register | Status register read command | 0000 | * 101 | 0000 | * 101 | 0000 | 0101 |
| WRSR | Write status register | Status register write command | 0000 | * 001 | 0000 | * 001 | 0000 | 0001 |

● Timing chart

1. Write enable (WREN) / disable (WRDI) cycle



- This IC has write enable status and write disable status. It is set to write enable status by write enable command, and it is set to write disable status by write disable command. As for these commands, set \overline{CS} LOW, and then input the respective ope codes. The respective commands accept command at the 7-th clock rise. Even with input over 7 clocks, command becomes valid.

When to carry out write and write status register command, it is necessary to set write enable status by the write enable command. If write or write status register command is input in the write disable status, commands are cancelled. And even in the write enable status, once write and write status register command is executed once, it gets in the write disable status. After power on, this IC is in write disable status.

2. Read command (READ)



Fig. 37 Read command (BR25L010/020/040-W) * 1 BR25L010/020-W=Don't care BR25L040-W=A8

| Product number | Address length |
|----------------|----------------|
| BR25L010-W | A6-A0 |
| BR25L020-W | A7-A0 |
| BR25L040-W | A8-A0 |



Fig. 38 Read command (BR25L080/160/320/640-W) * =Don't care

| Product number | Address length |
|----------------|----------------|
| BR25L080-W | A9-A0 |
| BR25L160-W | A10-A0 |
| BR25L320-W | A11-A0 |
| BR25L640-W | A12-A0 |

By read command, data of EEPROM can be read. As for this command, set \overline{CS} LOW, then input address after read ope code. EEPROM starts data output of the designated address. Data output is started from SCK fall of 15/23^{*1} clock, and from D7 to D0 sequentially. This IC has increment read function. After output of data for 1 byte (8 bits), by continuing input of SCK, data of the next address can be read. Increment read can read all the addresses of EEPROM. After reading data of the most significant address, by continuing increment read, data of the most insignificant address is read.

* =Don't care * 1 BR25L010/020/040-W=15 clocks
BR25L080/160/320/640-W=23 clocks

3. Write command (WRITE)



Fig.39 Write command (BR25L010/020/040-W) * 1 BR25L010/020-W=Don't care BR25L040-W=A8

| Product number | Address length |
|----------------|----------------|
| BR25L010-W | A6-A0 |
| BR25L020-W | A7-A0 |
| BR25L040-W | A8-A0 |

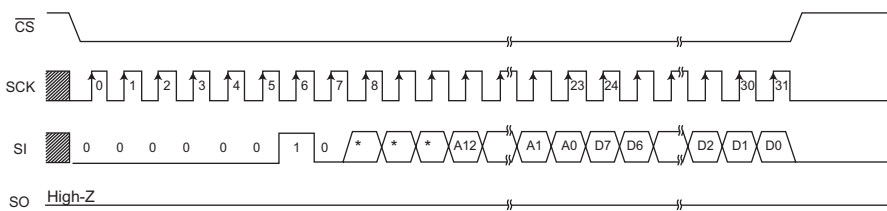


Fig.40 Write command (BR25L080/160/320/640-W) * =Don't care

| Product number | Address length |
|----------------|----------------|
| BR25L080-W | A9-A0 |
| BR25L160-W | A10-A0 |
| BR25L320-W | A11-A0 |
| BR25L640-W | A12-A0 |

By write command, data of EEPROM can be written. As for this command, set \overline{CS} LOW, then input address and data after write ope code. Then, by making \overline{CS} HIGH, the EEPROM starts writing. The write time of EEPROM requires time of tE/W (Max 5ms). During tE/W, other than status read command is not accepted. Start \overline{CS} after taking the last data (D0), and before the next SCL clock starts. At other timing, write command is not executed, and this write command is cancelled. This IC has page write function, and after input of data for 1 byte (8 bits), by continuing data input without starting \overline{CS} , data up to 16/32^{*1} bytes can be written for one tE/W. In page write, the insignificant 4/5^{*2} bit of the designated address is incremented internally at every time when data of 1 byte is input, and data is written to respective addresses. When data of the maximum bytes or higher is input, address rolls over, and previously input data is overwritten.

* 1 BR25L010/020/040-W=16 bytes at maximum
BR25L080/160/320/640-W=32 bytes at maximum
* 2 BR25L010/020/040-W=Insignificant 4 bits
BR25L080/160/320/640-W=Insignificant 5 bits

4. Status register write / read command



Fig.41 Status register write command (BR25L010/020/040-W)



Fig.42 Status register write command (BR25L080/160/320/640-W)

Write status register command can write status register data. The data that can be written by this command are 2 bits *1, that is, BP1 (bit3) and BP0 (bit2) among 8 bits of status register. By BP1 and BP0, write disable block of EEPROM can be set. As for this command, set \overline{CS} LOW, and input opcode of write status register, and input data. Then, by making \overline{CS} HIGH, EEPROM starts writing. Write time requires time of tE/W as same as write. As for \overline{CS} rise, start \overline{CS} after taking the last data bit (bit0), and before the next SCK clock starts. At other timing, command is cancelled. Write disable block is determined by BP1 and BP0, and the block can be selected from 1/4 of memory array, 1/2, and entire memory array. (Refer to the write disable block setting table.) To the write disabled block, write cannot be made, and only read can be made.

* 3 bits including BR25L080, 160, 320, 640-W WPEN (bit7)

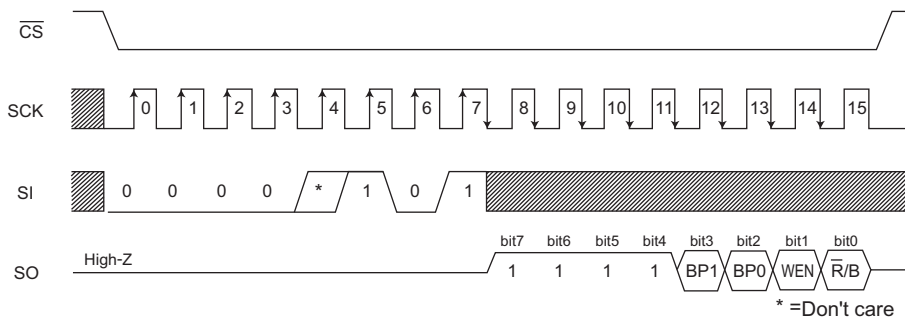


Fig.43 Status register read command (BR25L010/020/040-W)



Fig.44 Status register read command (BR25L080/160/320/640-W)

● At standby

- Current at standby

Set \overline{CS} "H", and be sure to set SCK, SI, \overline{WP} , \overline{HOLD} input "L" or "H". Do not input intermediate electric potential.

- Timing

As shown in Fig. 45, at standby, when SCK is "H", even if \overline{CS} is fallen, SI status is not read at fall edge. SI status is read at SCK rise edge after fall of \overline{CS} . At standby and at power ON/OFF, set \overline{CS} "H" status.



Fig.45 Operating timing

● \overline{WP} cancel valid area

\overline{WP} is normally fixed to "H" or "L" for use, but when \overline{WP} is controlled so as to cancel write status register command and write command, pay attention to the following \overline{WP} valid timing.

While write or write status register command is executed, by setting \overline{WP} = "L" in cancel valid area, command can be cancelled. The area from command ope code before \overline{CS} rise at internal automatic write start becomes the cancel valid area. However, once write is started, any input cannot be cancelled. \overline{WP} input becomes Don't Care, and cancellation becomes invalid.



Fig.46 \overline{WP} valid timing (WRSR)



Fig.47 \overline{WP} valid timing (WRITE)

● \overline{HOLD} pin

By \overline{HOLD} pin, command communication can be stopped temporarily. (HOLD status) The \overline{HOLD} pin carries out command communications normally when it is HIGH. To get in HOLD status, at command communication, when SCK = LOW, set the \overline{HOLD} pin LOW. At HOLD status, SCK and SI become Don't Care, and SO becomes high impedance (High-Z). To release the HOLD status, set the \overline{HOLD} pin HIGH when SCK = LOW. After that, communication can be restarted from the point before the HOLD status. For example, when HOLD status is made after A5 address input at read, after release of HOLD status, by starting A4 address input, read can be restarted. When in HOLD status, leave \overline{CS} LOW. When it is set \overline{CS} = HIGH in HOLD status, the IC is reset, therefore communication after that cannot be restarted.

● Method to cancel each command

○ READ

- Method to cancel : cancel by $\overline{CS} = "H"$

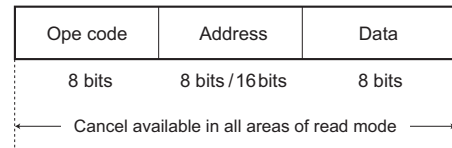


Fig.48 READ cancel valid timing

○ RDSR

- Method to cancel : cancel by $\overline{CS} = "H"$

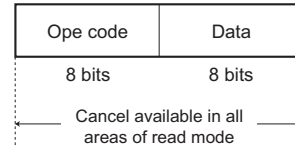


Fig.49 RDSR cancel valid timing

○ WRITE, PAGE WRITE

- a : Ope code, address input area.
Cancellation is available by $\overline{CS} = "H"$.
- b : Data input area (D7 ~ D1 input area)
Cancellation is available by $\overline{CS} = "H"$.
- c : Data input area (D0 area)
When \overline{CS} is started, write starts.
After \overline{CS} rise, cancellation cannot be made by any means.
- d : tE/W area
Cancellation is available by $\overline{CS} = "H"$. However, when write starts (\overline{CS} is started) in the area c, cancellation cannot be made by any means. And, by inputting on SCK clock, cancellation cannot be made. In page write mode, there is write enable area at every 8 clocks.

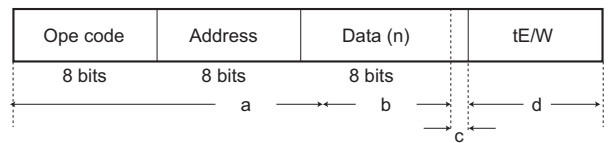
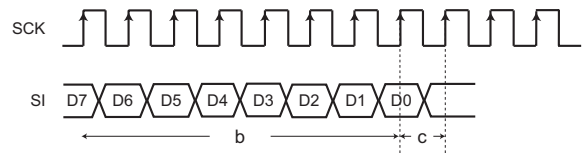


Fig.50 WRITE cancel valid timing



Note 1) If Vcc is made OFF during write execution, designated address data is not guaranteed, therefore write it once again.

Note 2) If \overline{CS} is started at the same timing as that of the SCK rise, write execution / cancel becomes unstable, therefore, it is necessary to fall in SCK = "L" area. As for SCK rise, assure timing of tCSS / tCSH or higher.

○ WRSR

- a : From ope code to 15 clock rise
Cancel by $\overline{CS} = "H"$.
- b : From 15 clock rise to 16 clock rise (write enable area)
When \overline{CS} is started, write starts.
After \overline{CS} rise, cancellation cannot be made by any means.
- c : After 16 clock rise
Cancel by $\overline{CS} = "H"$. However, when write starts (\overline{CS} is started) in the area b, cancellation cannot be made by any means. And, by inputting on SCK clock, cancellation cannot be made.

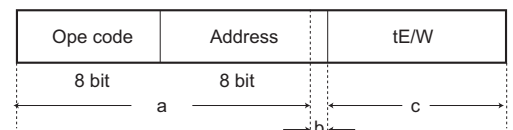
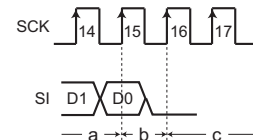


Fig.51 WRSR cancel valid timing

Note 1) If Vcc is made OFF during write execution, designated address data is not guaranteed, therefore write it once again.

Note 2) If \overline{CS} is started at the same timing as that of the SCK rise, write execution / cancel becomes unstable, therefore, it is necessary to fall in SCK = "L" area. As for SCK rise, assure timing of tCSS/tCSH or higher.

○ WREN/WRDI

- a : From ope code to clock rise, cancel by $\overline{CS} = "H"$.
- b : Cancellation is not available when \overline{CS} is started after 7 clock.

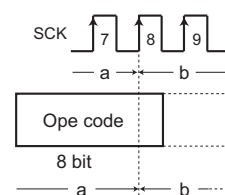


Fig.52 WREN / WRDI cancel valid timing

● High speed operation

In order to realize stable high speed operations, pay attention to the following input / output pin conditions.

○ Input pin pull up, pull down resistance

When to attach pull up, pull down resistance to EEPROM input pin, select an appropriate value for the microcontroller VOL, IOL from VIL characteristics of this IC.

○ Pull up resistance



Fig.53 Pull up resistance

$$R_{PU} \geq \frac{V_{CC} - V_{OLM}}{I_{OLM}} \quad \dots \textcircled{1}$$

$$V_{OLM} \leq V_{ILE} \quad \dots \textcircled{2}$$

Example) When $V_{CC} = 5V$, $V_{ILM} = 1.5V$, $V_{OLM} = 0.4V$, $I_{OLM} = 2mA$, from the equation ①,

$$R_{PU} \geq \frac{5-0.4}{2 \times 10^{-3}}$$

$$\therefore R_{PU} \geq 2.3[k\Omega]$$

With the value of R_{pu} to satisfy the above equation, V_{OLM} becomes 0.4V or higher, and with $V_{ILE} (= 1.5V)$, the equation ② is also satisfied.

- V_{ILM} : EEPROM V_{IH} specifications
- V_{OLM} : Microcontroller V_{OL} specifications
- I_{OLM} : Microcontroller I_{OL} specifications

And, in order to prevent malfunction, mistake write at power ON/OFF, be sure to make \overline{CS} pull up.

○ Pull down resistance



Fig.54 Pull down resistance

$$R_{PD} \geq \frac{V_{OHM}}{I_{OHM}} \quad \dots \textcircled{3}$$

$$V_{OHM} \geq V_{IHE} \quad \dots \textcircled{4}$$

Example) When $V_{CC} = 5V$, $V_{OHM} = V_{CC} - 0.5V$, $I_{OHM} = 0.4mA$, $V_{IHM} = V_{CC} \times 0.7V$, from the equation ③,

$$R_{PD} \geq \frac{5-0.5}{0.4 \times 10^{-3}}$$

$$\therefore R_{PD} \geq 11.3[k\Omega]$$

Further, by amplitude V_{IHE} , V_{ILE} of signal input to EEPROM, operation speed changes. By inputting signal of amplitude of V_{CC} / GND level to input, more stable high speed operations can be realized. On the contrary, when amplitude of $0.8V_{CC} / 0.2V_{CC}$ is input, operation speed becomes slow.

In order to realize more stable high speed operation, it is recommended to make the values of RPU, RPD as large as possible, and make the amplitude of signal input to EEPROM close to the amplitude of VCC / GND level.
 (*1 At this moment, operating timing guaranteed value is guaranteed.)



Fig.55 VIL dependency of data output delay time

○ SO load capacity condition

Load capacity of SO output pin affects upon delay characteristic of SO output. (Data output delay time, time from $\overline{\text{HOLD}}$ to High-Z) In order to make output delay characteristic into higher speed, make SO load capacity small. In concrete, "Do not connect many devices to SO bus", "Make the wire between the controller and EEPROM short", and so forth.

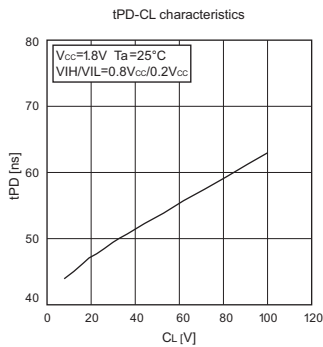


Fig.56 SO load dependency of data output delay time

○ Other cautions

Make the wire length from the microcontroller to EEPROM input signal same length, in order to prevent setup / hold violation to EEPROM, owing to difference of wire length of each input.

- Equivalent circuit
- Input circuit

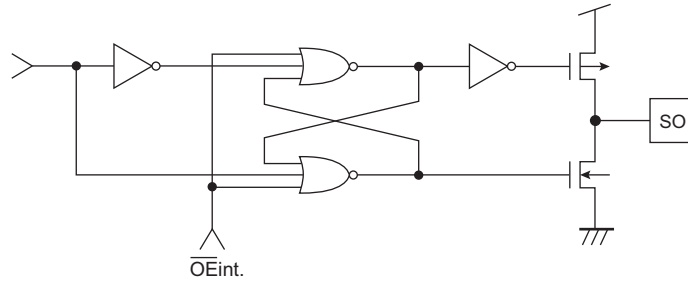


Fig.57 SO output equivalent circuit

- Input circuit

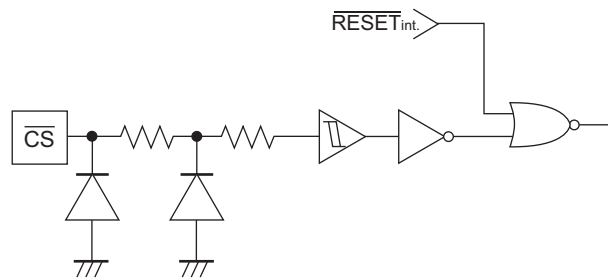


Fig.58 \overline{CS} input equivalent circuit

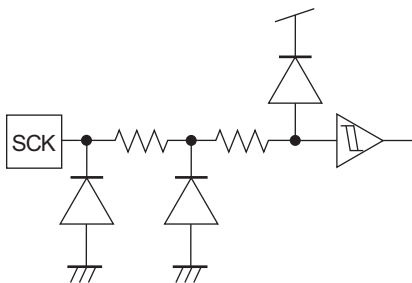


Fig.59 SCK input equivalent circuit

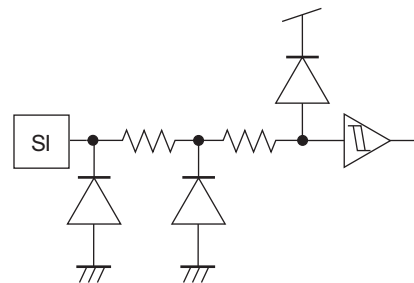


Fig.60 SI input equivalent circuit



Fig.61 \overline{HOLD} input equivalent circuit



Fig.62 \overline{WP} input equivalent circuit

● Notes on power ON/OFF

- At power ON/OFF, set \overline{CS} "H" (= V_{CC}).

When \overline{CS} is "L", this IC gets in input accept status (active). If power is turned on in this status, noises and the likes may cause malfunction, mistake write or so. To prevent these, at power ON, set \overline{CS} "H". (When \overline{CS} is in "H" status, all inputs are canceled.)

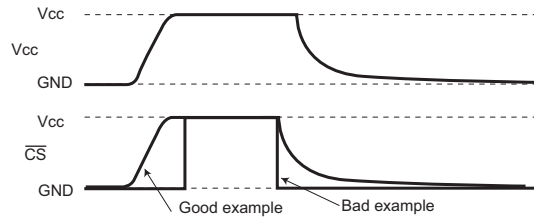


Fig.63 \overline{CS} timing at power ON/OFF

- (Good example) \overline{CS} terminal is pulled up to V_{CC} .

At power OFF, take 10ms or higher before re supply. If power is turned on without observing this condition, the IC internal circuit may not be reset, which please note.

- (Bad example) \overline{CS} terminal is "L" at power ON/OFF.

In this case, \overline{CS} always becomes "L" (active status), and EEPROM may have malfunction, mistake write owing to noises and the likes.

Even when \overline{CS} input is High-Z, the status becomes like this case, which please note.

- POR circuit

This IC has a POR (Power On Reset) circuit as mistake write countermeasure. After POR action, it gets in write disable status. The POR circuit is valid only when power is ON, and does not work when power is OFF. When power is ON, if the recommended conditions of the following t_R , t_{OFF} , and V_{bot} are not satisfied, it may become write enable status owing to noises and the likes.

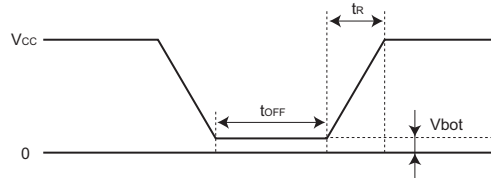


Fig.64 Rise waveform

Recommended conditions of t_R , t_{OFF} , V_{bot}

| t_R | t_{OFF} | V_{bot} |
|----------------|----------------|---------------|
| 10ms or below | 10ms or higher | 0.3V or below |
| 100ms or below | 10ms or higher | 0.2V or below |

● Noise countermeasures

- V_{CC} noise (bypass capacitor)

When noise or surge gets in the power source line, malfunction may occur, therefore, for removing these, it is recommended to attach a bypass capacitor (0.1 μ F) between IC V_{CC} and GND. At that moment, attach it as close to IC as possible.

And, it is also recommended to attach a bypass capacitor between board V_{CC} and GND.

- SCK noise

When the rise time (t_R) of SCK is long, and a certain degree or more of noise exists, malfunction may occur owing to clock bit displacement. To avoid this, a Schmitt trigger circuit is built in SCK input. The hysteresis width of this circuit is set about 0.2V, if noises exist at SCK input, set the noise amplitude 0.2Vp-p or below. And it is recommended to set the rise time (t_R) of SCK 100ns or below. In the case when the rise time is 100ns or higher, take sufficient noise countermeasures. Make the clock rise, fall time as small as possible.

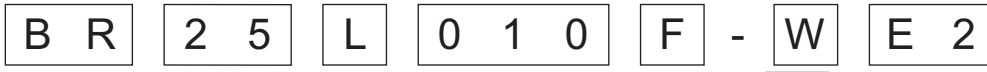
- \overline{WP} noise

During execution of write status register command, if there exist noises on \overline{WP} pin, mistake in recognition may occur and forcible cancellation may result, which please note. To avoid this, a Schmitt trigger circuit is built in \overline{WP} input. In the same manner, a Schmitt trigger circuit is built in SI input and HOLD input too.

● Cautions on use

- (1) Described numeric values and data are design representative values, and the values are not guaranteed.
- (2) We believe that application circuit examples are recommendable, however, in actual use, confirm characteristics further sufficiently. In the case of use by changing the fixed number of external parts, make your decision with sufficient margin in consideration of static characteristics and transition characteristics and fluctuations of external parts and our LSI.
- (3) Absolute maximum ratings
If the absolute maximum ratings such as impressed voltage and operating temperature range and so forth are exceeded, LSI may be destructed. Do not impress voltage and temperature exceeding the absolute maximum ratings. In the case of fear exceeding the absolute maximum ratings, take physical safety countermeasures such as fuses, and see to it that conditions exceeding the absolute maximum ratings should not be impressed to LSI.
- (4) GND electric potential
Set the voltage of GND terminal lowest at any action condition. Make sure that each terminal voltage is lower than that of GND terminal.
- (5) Heat design
In consideration of permissible dissipation in actual use condition, carry out heat design with sufficient margin.
- (6) Terminal to terminal short circuit and wrong packaging
When to package LSI onto a board, pay sufficient attention to LSI direction and displacement. Wrong packaging may destruct LSI. And in the case of short circuit between LSI terminals and terminals and power source, terminal and GND owing to foreign matter, LSI may be destructed.
- (7) Use in a strong electromagnetic field may cause malfunction, therefore, evaluate design sufficiently.

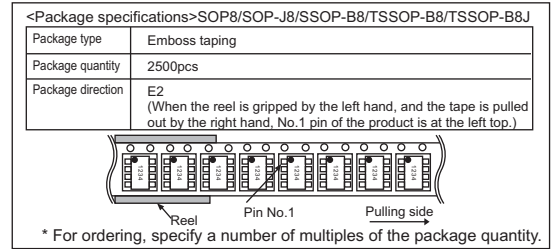
● Selection of order type



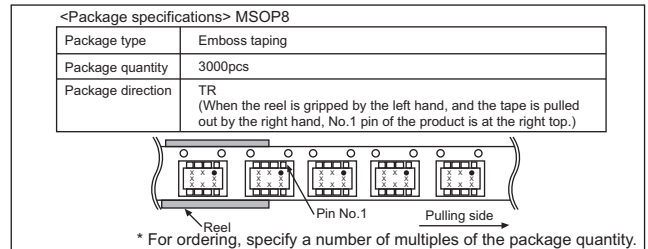
| | | | | | | |
|----------------|---------------------|--|---|--|-------------|---|
| Rohm type name | BUS type 25: SPI | Operating temperature L: -40°C ~ +85°C H: -40°C ~ +125°C | Capacity 010=1 K 020=2 K 040=4 K 080=8 K 160=16K 320=32K 640=64K | Package type F: SOP8 FJ: SOP-J8 FV: SSOP-B8 FV: TSSOP-B8 FVM: MSOP8 FVJ: TSSOP-B8J | Double cell | Package specifications E2: reel shape emboss taping TR: reel shape emboss taping (MSOP8 package only) |
|----------------|---------------------|--|---|--|-------------|---|

● Package specifications

SOP8/SOP-J8/SSOP-B8/TSSOP-B8/TSSOP-B8J



MSOP8



Notice

Precaution on using ROHM Products

- Our Products are designed and manufactured for application in ordinary electronic equipments (such as AV equipment, OA equipment, telecommunication equipment, home electronic appliances, amusement equipment, etc.). If you intend to use our Products in devices requiring extremely high reliability (such as medical equipment ^(Note 1), transport equipment, traffic equipment, aircraft/spacecraft, nuclear power controllers, fuel controllers, car equipment including car accessories, safety devices, etc.) and whose malfunction or failure may cause loss of human life, bodily injury or serious damage to property ("Specific Applications"), please consult with the ROHM sales representative in advance. Unless otherwise agreed in writing by ROHM in advance, ROHM shall not be in any way responsible or liable for any damages, expenses or losses incurred by you or third parties arising from the use of any ROHM's Products for Specific Applications.

(Note1) Medical Equipment Classification of the Specific Applications

| JAPAN | USA | EU | CHINA |
|-----------|-----------|------------|-----------|
| CLASS III | CLASS III | CLASS II b | CLASS III |
| CLASS IV | | CLASS III | |

- ROHM designs and manufactures its Products subject to strict quality control system. However, semiconductor products can fail or malfunction at a certain rate. Please be sure to implement, at your own responsibilities, adequate safety measures including but not limited to fail-safe design against the physical injury, damage to any property, which a failure or malfunction of our Products may cause. The following are examples of safety measures:
 - Installation of protection circuits or other protective devices to improve system safety
 - Installation of redundant circuits to reduce the impact of single or multiple circuit failure
- Our Products are designed and manufactured for use under standard conditions and not under any special or extraordinary environments or conditions, as exemplified below. Accordingly, ROHM shall not be in any way responsible or liable for any damages, expenses or losses arising from the use of any ROHM's Products under any special or extraordinary environments or conditions. If you intend to use our Products under any special or extraordinary environments or conditions (as exemplified below), your independent verification and confirmation of product performance, reliability, etc. prior to use, must be necessary:
 - Use of our Products in any types of liquid, including water, oils, chemicals, and organic solvents
 - Use of our Products outdoors or in places where the Products are exposed to direct sunlight or dust
 - Use of our Products in places where the Products are exposed to sea wind or corrosive gases, including Cl₂, H₂S, NH₃, SO₂, and NO₂
 - Use of our Products in places where the Products are exposed to static electricity or electromagnetic waves
 - Use of our Products in proximity to heat-producing components, plastic cords, or other flammable items
 - Sealing or coating our Products with resin or other coating materials
 - Use of our Products without cleaning residue of flux (even if you use no-clean type fluxes, cleaning residue of flux is recommended); or Washing our Products by using water or water-soluble cleaning agents for cleaning residue after soldering
 - Use of the Products in places subject to dew condensation
- The Products are not subject to radiation-proof design.
- Please verify and confirm characteristics of the final or mounted products in using the Products.
- In particular, if a transient load (a large amount of load applied in a short period of time, such as pulse. is applied, confirmation of performance characteristics after on-board mounting is strongly recommended. Avoid applying power exceeding normal rated power; exceeding the power rating under steady-state loading condition may negatively affect product performance and reliability.
- De-rate Power Dissipation (Pd) depending on Ambient temperature (Ta). When used in sealed area, confirm the actual ambient temperature.
- Confirm that operation temperature is within the specified range described in the product specification.
- ROHM shall not be in any way responsible or liable for failure induced under deviant condition from what is defined in this document.

Precaution for Mounting / Circuit board design

- When a highly active halogenous (chlorine, bromine, etc.) flux is used, the residue of flux may negatively affect product performance and reliability.
- In principle, the reflow soldering method must be used; if flow soldering method is preferred, please consult with the ROHM representative in advance.

For details, please refer to ROHM Mounting specification

Precautions Regarding Application Examples and External Circuits

1. If change is made to the constant of an external circuit, please allow a sufficient margin considering variations of the characteristics of the Products and external components, including transient characteristics, as well as static characteristics.
2. You agree that application notes, reference designs, and associated data and information contained in this document are presented only as guidance for Products use. Therefore, in case you use such information, you are solely responsible for it and you must exercise your own independent verification and judgment in the use of such information contained in this document. ROHM shall not be in any way responsible or liable for any damages, expenses or losses incurred by you or third parties arising from the use of such information.

Precaution for Electrostatic

This Product is electrostatic sensitive product, which may be damaged due to electrostatic discharge. Please take proper caution in your manufacturing process and storage so that voltage exceeding the Products maximum rating will not be applied to Products. Please take special care under dry condition (e.g. Grounding of human body / equipment / solder iron, isolation from charged objects, setting of Ionizer, friction prevention and temperature / humidity control).

Precaution for Storage / Transportation

1. Product performance and soldered connections may deteriorate if the Products are stored in the places where:
 - [a] the Products are exposed to sea winds or corrosive gases, including Cl₂, H₂S, NH₃, SO₂, and NO₂
 - [b] the temperature or humidity exceeds those recommended by ROHM
 - [c] the Products are exposed to direct sunshine or condensation
 - [d] the Products are exposed to high Electrostatic
2. Even under ROHM recommended storage condition, solderability of products out of recommended storage time period may be degraded. It is strongly recommended to confirm solderability before using Products of which storage time is exceeding the recommended storage time period.
3. Store / transport cartons in the correct direction, which is indicated on a carton with a symbol. Otherwise bent leads may occur due to excessive stress applied when dropping of a carton.
4. Use Products within the specified time after opening a humidity barrier bag. Baking is required before using Products of which storage time is exceeding the recommended storage time period.

Precaution for Product Label

QR code printed on ROHM Products label is for ROHM's internal use only.

Precaution for Disposition

When disposing Products please dispose them properly using an authorized industry waste company.

Precaution for Foreign Exchange and Foreign Trade act

Since our Products might fall under controlled goods prescribed by the applicable foreign exchange and foreign trade act, please consult with ROHM representative in case of export.

Precaution Regarding Intellectual Property Rights

1. All information and data including but not limited to application example contained in this document is for reference only. ROHM does not warrant that foregoing information or data will not infringe any intellectual property rights or any other rights of any third party regarding such information or data. ROHM shall not be in any way responsible or liable for infringement of any intellectual property rights or other damages arising from use of such information or data.:
2. No license, expressly or implied, is granted hereby under any intellectual property rights or other rights of ROHM or any third parties with respect to the information contained in this document.

Other Precaution

1. This document may not be reprinted or reproduced, in whole or in part, without prior written consent of ROHM.
2. The Products may not be disassembled, converted, modified, reproduced or otherwise changed without prior written consent of ROHM.
3. In no event shall you use in any way whatsoever the Products and the related technical information contained in the Products or this document for any military purposes, including but not limited to, the development of mass-destruction weapons.
4. The proper names of companies or products described in this document are trademarks or registered trademarks of ROHM, its affiliated companies or third parties.

General Precaution

1. Before you use our Products, you are requested to carefully read this document and fully understand its contents. ROHM shall not be in any way responsible or liable for failure, malfunction or accident arising from the use of any ROHM's Products against warning, caution or note contained in this document.
2. All information contained in this document is current as of the issuing date and subject to change without any prior notice. Before purchasing or using ROHM's Products, please confirm the latest information with a ROHM sales representative.
3. The information contained in this document is provided on an "as is" basis and ROHM does not warrant that all information contained in this document is accurate and/or error-free. ROHM shall not be in any way responsible or liable for any damages, expenses or losses incurred by you or third parties resulting from inaccuracy or errors of or concerning such information.