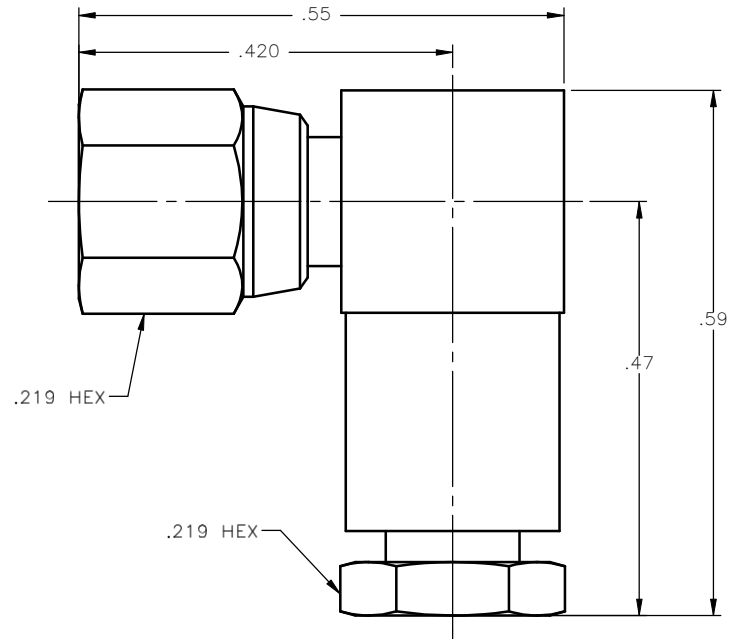


REVISIONS			
REV.	DESCRIPTION	DATE	APPROVED
A	INITIAL RELEASE	03/29/11	D.N.




NOTES: CONFORMS TO MIL-PRF-39012/75-0004

MATERIALS:

1. INSULATORS = VIRGIN WHITE TEFLON PER ASTM D1710, GRADE 1, TYPE I, CLASS "B".
2. CONTACT = BERYLLIUM COPPER PER ASTM B196, ALLOY C17300, TEMPER TD04.
3. ALL OTHER METAL PARTS = BRASS PER ASTM B16, ALLOY C36000, TEMPER H02.

FINISHES:

1. BODIES = GOLD PLATE PER MIL-G-45204, TYPE II, CLASS 1 GRADE C, OVER .00010 TO .00020 COPPER STRIKE PER MIL-C-14550.
2. CONTACT = GOLD PLATE PER MIL-G-45204, TYPE II, CLASS 1, GRADE C, OVER .00010 TO .00020 STRESS FREE SULFAMATE NICKEL PER QQ-N-290.
3. ALL OTHER METAL PARTS = GOLD PLATE PER MIL-G-45204, TYPE II, CLASS 0, GRADE C, OVER .00010 TO .00020 COPPER STRIKE PER MIL-C-14550.

UNLESS OTHERWISE SPECIFIED DIMENSIONS ARE IN INCHES TOLERANCES ON		DWN:	DATE		Property of Radiall		
		D.N.	03/29/11		This document cannot be reproduced or communicated to a third party without prior written permission of RADIALL.		
DECIMAL	ANGLE	CHKD:	DATE	SMC RIGHT ANGLE FEMALE PLUG CLAMP TYPE FOR RG-316 & SIMILAR CABLES			
		M.J.	03/29/11				
		APVD:	DATE	SIZE	FSCM NO.	DWG NO.	REV
		J.M.	03/29/11	A	19505	1005-1551-903	A
REFERENCE:		MATERIALS & FINISHES:		SCALE		THIRD ANGLE PROJECTION	
ORIGINATED: D.N. DATE: 03/29/11		SEE NOTES		6:1		SHEET 1 OF 1	

1005-1551-903