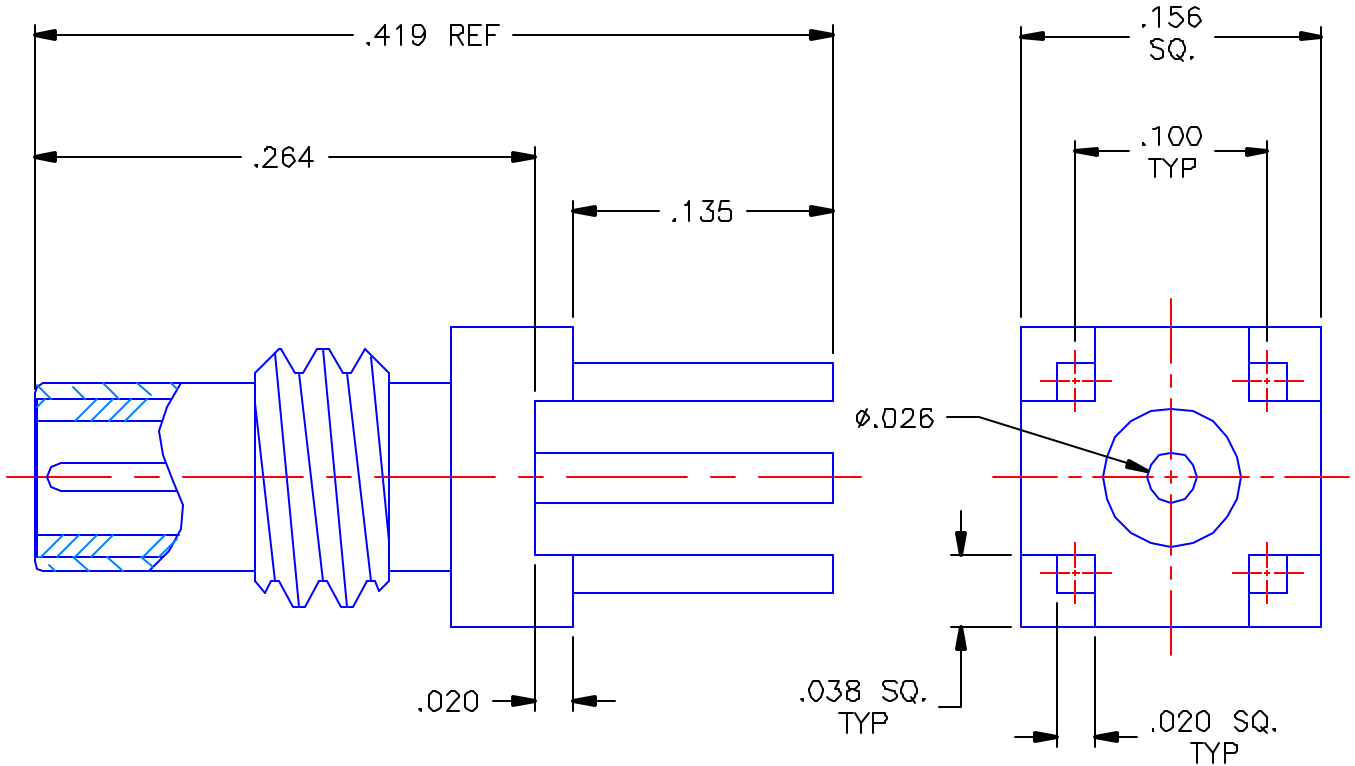


PROPRIETARY INFORMATION  
 NOT TO BE RELEASED  
 WITHOUT WRITTEN PERMISSION  
 FROM AN AUTHORIZED  
 REPRESENTATIVE OF  
 APPLIED ENGINEERING PRODUCTS

REVISIONS			
REV	DESCRIPTION	DATE	APPROVED
-	INITIAL RELEASE	09/08/98	D.N.



NOTES:

MATERIAL:

1. BODY = BRASS PER ASTM B16, ALLOY C36000, TEMPER H02.
2. INSULATOR = VIRGIN WHITE TEFLON PER ASTM D1710, GRADE 1, TYPE I, CLASS "A".
3. CONTACT = BERYLLIUM COPPER PER ASTM B196, ALLOY C17300, TEMPER TD04.

FINISHES:

1. BODY = GOLD PLATE PER MIL-G-45204, TYPE II, CLASS 0, GRADE C, OVER .00010 TO .00020 COPPER STRIKE PER MIL-C-14550.
2. CONTACT = GOLD PLATE PER MIL-G-45204, TYPE II, CLASS 1, GRADE C, OVER .00010 TO .00020 STRESS FREE SULFAMATE NICKEL PER QQ-N-290.

UNLESS OTHERWISE SPECIFIED  
 DIMENSIONS ARE IN INCHES  
 TOLERANCES ON

DWN: DATE

D N 09/04/98

CHKD: DATE

C.T. 09/04/98

APVD: DATE

G.A.T. 09/08/98



APPLIED ENGINEERING PRODUCTS

104 John W. Murphy Dr.  
 New Haven, CT 06513

SSMC STRAIGHT MALE  
 P.C.B. MOUNT RECEPTACLE

DECIMAL	ANGLE
	$\pm 2^\circ$

REFERENCE:

MATERIAL & FINISHES:

SEE NOTES

SIZE

A

FSCM NO

19505

DWG NO

7009-1511-050

REV

-

SCALE 10:1

CODE

SHEET 1 OF 1

ORIGINATOR: D.N.  
 DATE: 09/04/98

/009-1511-050