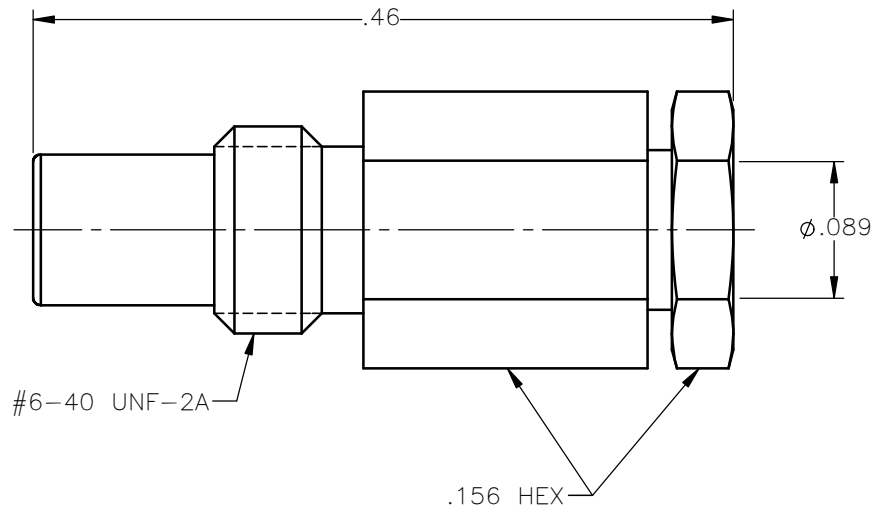


REVISIONS			
REV.	DESCRIPTION	DATE	APPROVED
A	INITIAL RELEASE	11/02/11	D.N.





NOTES:

MATERIALS:

1. BODY & BACK NUT = BRASS PER ASTM B16, ALLOY C36000, TEMPER H02.
2. INSULATORS = VIRGIN WHITE TEFLON PER ASTM D1710, GRADE 1, TYPE I, CLASS "B".
3. CONTACT = BERYLLIUM COPPER PER ASTM B196, ALLOY C17300, TEMPER TD04.

FINISHES:

1. BODY & BACK NUT = GOLD PLATE PER MIL-G-45204, TYPE II, CLASS 0, GRADE C, OVER .00010 TO .00020 COPPER STRIKE PER MIL-C-14550.
2. CONTACT = GOLD PLATE PER MIL-G-45204, TYPE II, CLASS 1, GRADE C, OVER .00010 TO .00020 STRESS FREE SULFAMATE NICKEL PER QQ-N-290.

UNLESS OTHERWISE SPECIFIED DIMENSIONS ARE IN INCHES TOLERANCES ON	DWN: DATE	 Property of Radiall This document cannot be reproduced or communicated to a third party without prior written permission of RADIALL. 			
	D.N. 11/02/11				
	CHKD: DATE				
DECIMAL	ANGLE	J.S. 11/02/11	SSMC STRAIGHT JACK SOLDER TYPE FOR .085 S/R & SIMILAR CABLES		
		APVD: DATE			
		J.M. 11/02/11			
REFERENCE:	MATERIALS & FINISHES:	SIZE	FSCM NO.	DWG NO.	REV
ORIGINATED: D.N. DATE: 11/02/11	SEE NOTES	A	19505	7101-1541-010	A
		SCALE 8:1	THIRD ANGLE PROJECTION		SHEET 1 OF 1

7101-1541-010