

IEC Appliance Inlet C14 or C18 with Filter, Circuit Breaker TA45

Standard- or Medical-Filter



Protection class I with shield



Protection class II without shield



**Description**

- Panel Mount :  
Screw-on mounting from front side
- 3 Functions :  
Appliance Inlet protection class I or II , circuit breaker type TA45 2-pole , Line filter in standard and medical version
- Quick connect terminals 6.3 x 0.8 mm

**Unique Selling Proposition**

- Compact power entry module with circuit breaker
- High configurability
- Easy assembly with prewired modules
- Protection class I or II

**Approvals**

- Approval Reference Type: 5145
- VDE Certificate Number: 40035745
- UL File Number: E72928

**Characteristics**

- All single elements are already wired
- Unwired versions available on request
- Circuit Breaker non-illuminated or illuminated
- Suitable for use in equipment according to IEC/UL 60950
- Suitable for use in medical equipment according to IEC/UL 60601-1

**References**

Alternative: version without line filter [6145](#)  
We recommend for new applications the new type [DF12](#)

**Weblinks**

[pdf datasheet](#), [html-datasheet](#), [General Product Information](#), [Approvals](#), [CE declaration of conformity](#), [RoHS](#), [CHINA-RoHS](#), [REACH](#), [Distributor Stock-Check](#), [Accessories](#), [Detailed request for product](#), [Microsite](#)

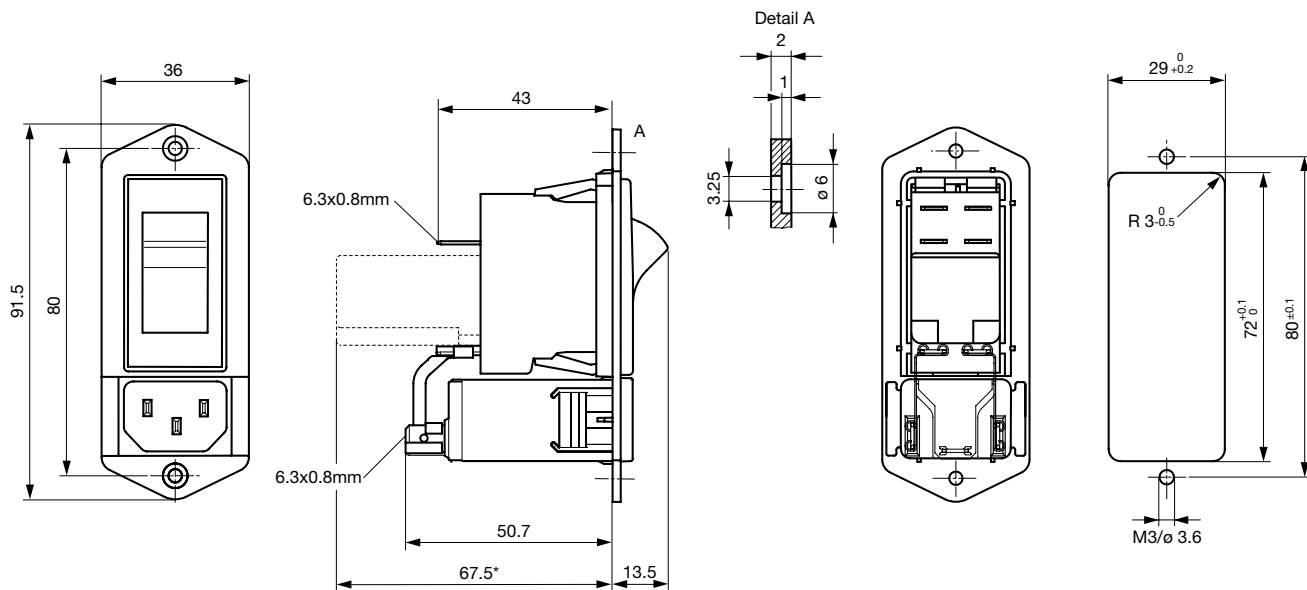
**Technical Data**

Ratings IEC	1 - 10A @ Ta 40 °C / 250VAC; 50Hz
Ratings UL/CSA	1 - 15A @ Ta 40 °C / 125VAC; 60Hz
Leakage Current	standard < 0.5mA (250V / 60Hz) medical < 5 µA (250 V / 60 Hz)
Dielectric Strength	> 1.7kVDC between L-N > 2.7kVDC between L/N-PE Test voltage (2 sec)
Allowable Operation Temperature	-10 °C to 55 °C
Climatic Category	10/055/21 acc. to IEC 60068-1
IP-Protection	from front side IP 40 acc. to IEC 60529
Protection Class	Suitable for appliances with protection class I or II acc. to IEC 61140
Terminal	Quick connect terminals 6.3 x 0.8 mm
Panel Thickness S	Screw: max 8 mm Mounting screw torque max 0.5Nm
Material: Housing	Thermoplastic, black, UL 94V-0

appliance inlet/-outlet	C14 or C18 acc. to IEC 60320-1, UL 498, CSA C22.2 no. 42 (for cold conditions) pin-temperature 70 °C, 10A, Protection Class I or II
Circuit Breakers	Acc. IEC/EN 60934, UL 1077, CSA 22.2 no. 235 2-pole rocker switch, illuminated or non-illuminated. Optional with undervoltage- or remote trip release Short circuit capacity Icn: at In < 3A/240VAC : 10 x In at In ≥ 3A/240VAC : 300A
Line Filter	Standard and Medical Version, IEC 60939, UL 1283, CSA C22.2 no. 8 <a href="#">Technical Details</a>
MTBF	> 100'000h acc. to MIL-HB-217 F

Detailed information on product approvals, code requirements, usage instructions and detailed test conditions can be looked up in [General Product Information](#)

## Dimensions [mm]



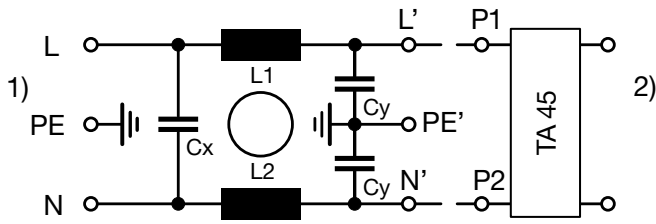
\* --- Version TA45 with undervoltage release

## Technical Data of Filter-Components

Rated Current [A]	Filter-Type	Inductances L [mH]	Capacitance CX [nF]	Capacitance CY [nF]	R [MΩ]
1	Standard Version	2 x 11	47	2.2	-
2	Standard Version	2 x 4	47	2.2	-
3	Standard Version	2 x 2.5	47	2.2	-
4	Standard Version	2 x 1.6	47	2.2	-
6	Standard Version	2 x 0.7	47	2.2	-
8	Standard Version	2 x 0.6	47	2.2	-
10	Standard Version	2 x 0.4	47	2.2	-
15	Standard Version	2 x 0.1	47	2.2	-
1	Medical Version (M5)	2 x 11	47	-	1
2	Medical Version (M5)	2 x 4	47	-	1
6	Medical Version (M5)	2 x 0.7	47	-	1
8	Medical Version (M5)	2 x 0.6	47	-	1
10	Medical Version (M5)	2 x 0.4	47	-	1
15	Medical Version (M5)	2 x 0.1	47	-	1

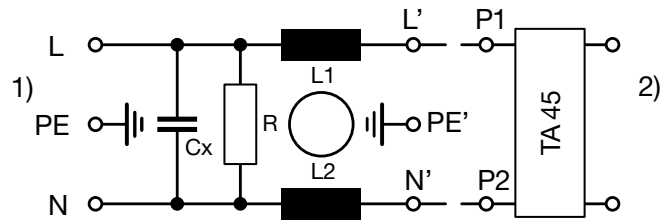
Diagrams

Standard version



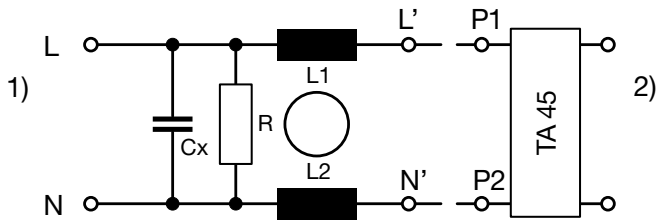
1) Line  
2) Load

Medical version (M5)



1) Line  
2) Load

Medical filter (M5) protection class II



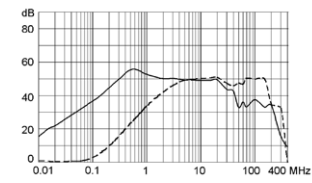
1) Line  
2) Load

Attenuation Loss

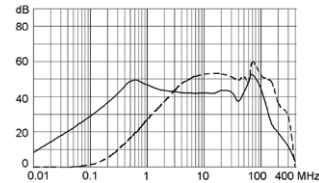
--- 50Ω differential mode \_\_\_\_ 50Ω common mode

Standard version

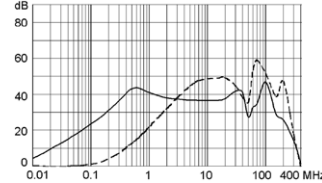
1 A



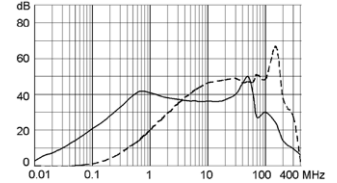
2 A



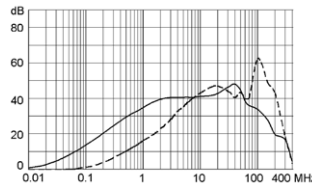
3 A



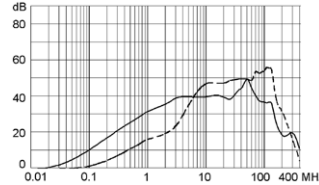
4 A



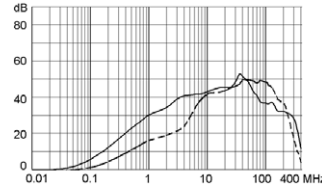
6 A



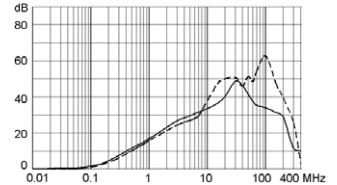
8 A



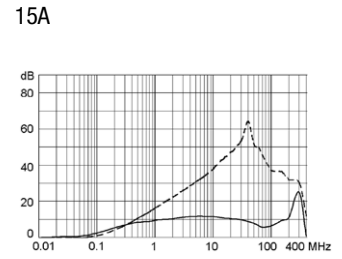
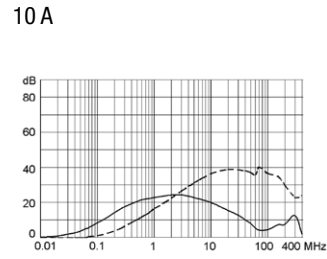
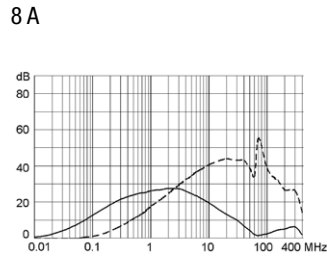
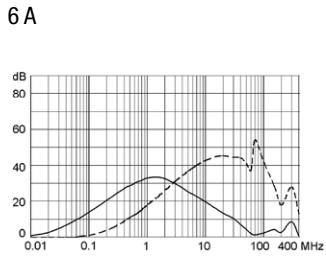
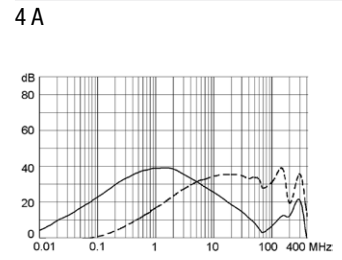
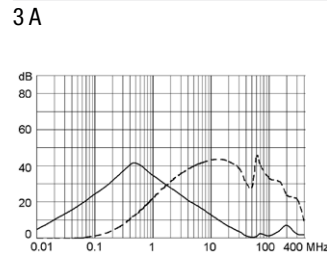
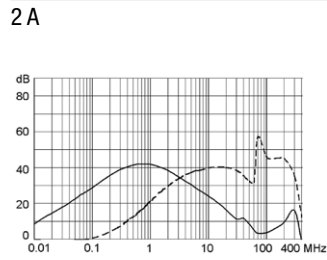
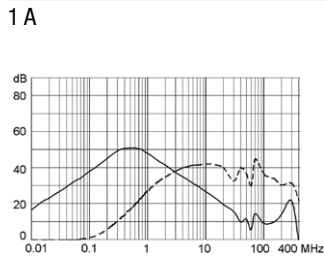
10 A



15 A



Medical version (M5)



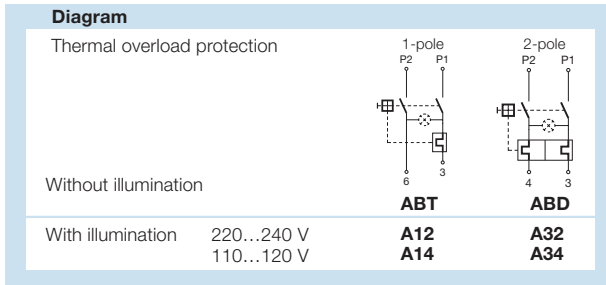
**Table 1 Selection for type TA45**

Order example



- Circuit Breaker of Equipment
  - 2-pole, rocker actuated
  - Quick connect terminal
- Other types on request

ABT W F 150 C0



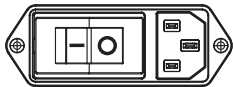
**Colours**

Switch front		Rocker	
<b>W</b>	black	white	-
<b>B</b>	black	black	-
<b>6</b>	black	-	orange transp.

**Rocker legend**

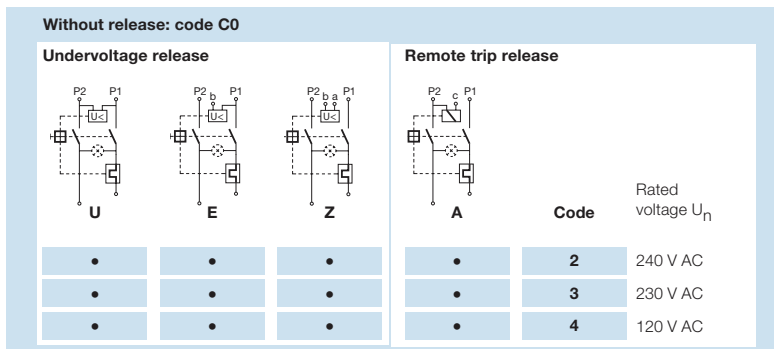
Surface	Illustration	Colour of print	Surface	Illustration	Colour of print
<b>F</b>	embossed / Relief	- O	<b>M</b>	printed	- O black
<b>H</b>	printed / bedruckt	ON OFF white / weiss	<b>P</b>	printed	I O white
<b>K</b>	printed / bedruckt	ON OFF black / schwarz	<b>R</b>	printed	I O black
<b>L</b>	printed / bedruckt	- O white / weiss			

Position of the rocker legend  
e.g F



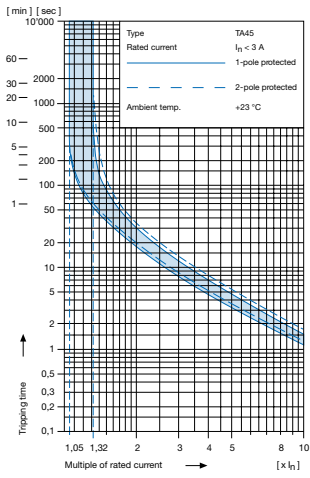
**Rated current circuit breaker of equipment**

$I_n$	Code	$I_n$	Code	$I_n$	Code	$I_n$	Code
0,1	J01	1,3	J13	2,8	J28	10,0	100
0,2	J02	1,4	J14	3,0	030	11,0	110
0,3	J03	1,5	J15	3,5	035	12,0	120
0,4	J04	1,6	J16	4,0	040	13,0	130
0,5	J05	1,7	J17	4,5	045	14,0	140
0,6	J06	1,8	J18	5,0	050	15,0	150
0,7	J07	1,9	J19	6,0	060	20,0	200
0,8	J08	2,0	J20	6,5	065		
0,9	J09	2,1	J21	7,0	070		
1,0	J10	2,2	J22	7,5	075		
1,1	J11	2,3	J23	8,0	080		
1,2	J12	2,5	J25	9,0	090		

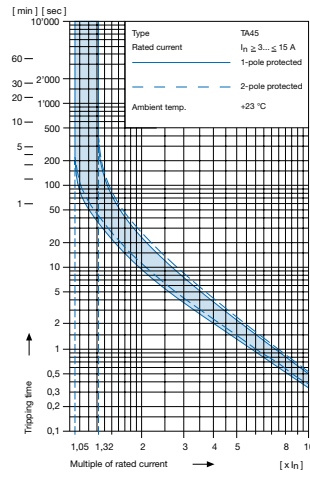


**Technical data (continued)**  
**Circuit breaker**

Tripping characteristics  
 $I_n < 3 A$



Tripping characteristics  
 $I_n \ge 3... \le 15 A$



**Effect of ambient temperature 1)**

The unit is calibrated for an ambient temperature of +23 °C. To determine the rated current for a lower or higher ambient temperature, use a correction factor from the table below.

* Ambient temperature [°C]	Correction factor
-10	0,89
- 5	0,91
0	0,92
+23	1,00
+30	1,03
+40	1,08
+55	1,16

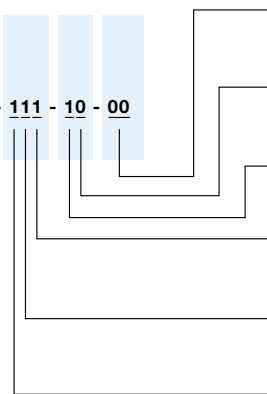
\* Temperature must be measured at the rear of the breaker next to the terminals after equipment operating temperature has been reached.

**1) Example**

Rated current at +23 °C 6,0 A  
 Ambient temperature +40 °C  
 Correction factor 1,08  
 Chosen rated current at  
 + 40 °C ambient temperature **6 A x 1,08 = 6,5 A**

**Configuration code (example)**

**Type** Order code **TA45**  
(2-pole rocker-switch without accessories)  
**5145** - **ABTWF150C0** - 000 - **111** - **10** - **00**  
see table 1



**Optional Variants**

- 00** standard
- 21** V-Lock notch

**Terminal PE**

- 0** without (PCII)
- 1** QC 6.3x0.8

**Terminal L and N**

- 1** QC 6.3x0.8, without connection to TA45
- 3** Connection to TA45 non insulated

**Metal Shield Filter**

- 0** with metal shield (PCI)
- 1** without metal shield (PCI and PCII)

**Type of mains filter / capacitor / bleed resistor**

- 1** standard X2,Y2 without 1)
- 3** medical M5 X2 with

**Rated current** 2)

- 1** 1A
- 2** 2A
- 3** 3A
- 4** 4A
- 5** 6A
- 6** 8A
- 7** 10A
- 8** 15A

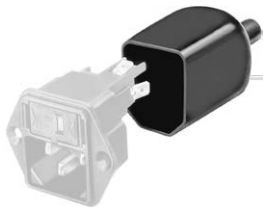
1) Not in conjunction with PC II

2) The rated current of the line-filter must be equal or more than the rated current of TA45.

**Packaging unit** 20 Pcs

**Accessories**

**Description**



Assorted Covers  
Rear Cover

0859.0074

**Mating Outlets/Connectors**

**Category / Description**

[Appliance Outlet Overview complete](#)



IEC Appliance Outlet F, Screw-on Mounting, Front Side, Solder Terminal	4787
IEC Appliance Outlet F, Snap-in Mounting, Front Side, Solder or Quick-connect Terminal	4788
IEC Appliance Outlet F or H, Screw-on Mounting, Front Side, Solder, PCB or Quick-connect Terminal	5091

[Appliance Outlet further types to 5145](#)

[Connector Overview complete](#)



4782 Mounting: Power Cord, 3 x 1 mm <sup>2</sup> / 3 x 18 AWG, Cable, Connector: IEC C13	4782
4022 Mounting: Power Supply Cord, 3 x 1.5 mm <sup>2</sup> , Screw clamps, Connector: IEC C13	4022
4785 Mounting: Power Cord, 3 x 1 mm <sup>2</sup> / 3 x 18 AWG, Cable, Connector: IEC C13	4785
4300-06 Mounting: Power Cord, 3 x 1 mm <sup>2</sup> / 3 x 18 AWG, Cable, Connector: IEC C13	4300-06
4012 Mounting: Power Supply Cord, 3 x 1.5 mm <sup>2</sup> , Screw clamps, Connector: IEC C13	4012

[Connector further types to 5145](#)

...

**Mating Outlets/Connectors shuttered**

[Power Cord Overview complete](#)



Power cord with IEC connector C17, V-Lock, straight	VAC17KS
---	---------

[Power Cord further types to 5145](#)