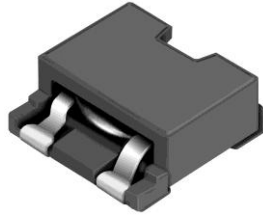
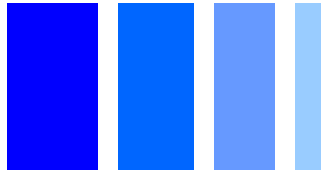


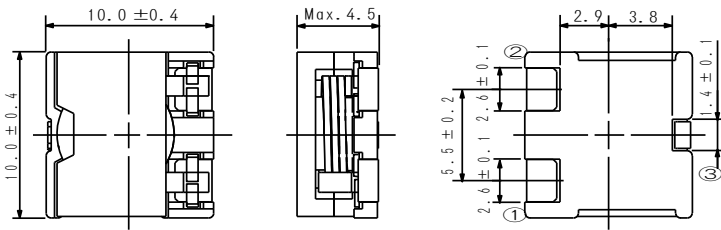
SMD Power Inductor CDEP104



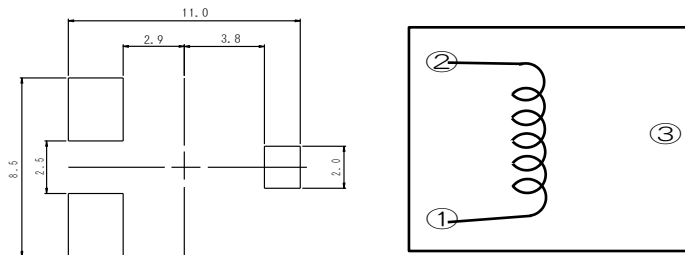
Description

- Ferrite core construction.
- Magnetically shielded.
- L × W × H: 10.4 × 10.4 × 4.5 mm Max.
- Product weight: 2.1g(Ref.)
- Moisture Sensitivity Level: 1
- RoHS compliance.

Dimension - [mm]



Land pattern and Schematics - [mm]



Environmental Data

- Operating temperature range: -40°C ~ +125°C (including coil's self temperature rise)
- Storage temperature range: -40°C ~ +125°C
- Solder reflow temperature: 260 °C peak.

Packaging

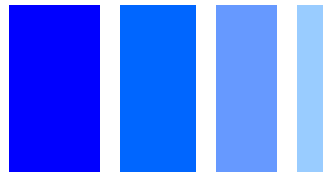
- Carrier tape and reel packaging
- 13.0" diameter reel
- 500pcs per reel

Applications

- Ideally used in portable computer CPU power supply

SMD Power Inductor

CDEP104



ELECTRICAL CHARACTERISTICS-LOW D.C.R. TYPE

PART NO.	STAMP	INDUCTANCE [WITHIN] ※1	D.C.R. (mΩ) [MAX.] (at 20°C)	THE SATURATION CURRENT (A) ※2		TEMPERATURE RISE CURRENT (A) ※3 ΔT=40°C
				(at 20°C)	(at100°C)	
CDEP1Ø4NP-ØR3NC-88	0R3NL	0.36μH±30%	2.2(1.8)	24.2	20.8	18.0
CDEP1Ø4NP-ØR8MC-88	0R8ML	0.8μH±20%	3.7(3.1)	16.2	14.0	13.4
CDEP1Ø4NP-1R4MC-88	1R4ML	1.4μH±20%	5.9(4.9)	12.2	10.5	10.2
CDEP1Ø4NP-2R2MC-88	2R2ML	2.2μH±20%	11.8(9.8)	9.8	8.6	7.3
CDEP1Ø4NP-3R2MC-88	3R2ML	3.2μH±20%	18.6(15.5)	8.1	7.0	5.4
CDEP1Ø4NP-4R3MC-88	4R3ML	4.3μH±20%	21.8(18.2)	7.0	6.0	5.0

ELECTRICAL CHARACTERISTICS-STANDARD TYPE

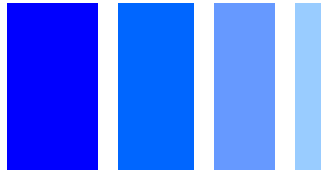
PART NO.	STAMP	INDUCTANCE [WITHIN] ※1	D.C.R. (mΩ) [MAX.] (at 20°C)	THE SATURATION CURRENT (A) ※2		TEMPERATURE RISE CURRENT (A) ※3 ΔT=40°C
				(at 20°C)	(at100°C)	
CDEP1Ø4NP-ØR2NC-5Ø	0R2NS	0.22μH±30%	2.2(1.8)	39.6	31.6	18.0
CDEP1Ø4NP-ØR4MC-5Ø	0R4MS	0.45μH±20%	3.7(3.1)	27.6	22.1	13.4
CDEP1Ø4NP-ØR8MC-5Ø	0R8MS	0.8μH±20%	5.9(4.9)	20.7	16.6	10.2
CDEP1Ø4NP-1R3MC-5Ø	1R3MS	1.3μH±20%	11.8(9.8)	16.6	13.3	7.3
CDEP1Ø4NP-1R8MC-5Ø	1R8MS	1.8μH±20%	18.6(15.5)	13.3	10.7	5.4
CDEP1Ø4NP-2R5MC-5Ø	2R5MS	2.5μH±20%	21.8(18.2)	11.8	9.5	5.0

※1. Inductance measuring condition: at 100kHz.

※2. Saturation current: The value of D.C. current when the inductance decreases to 65% (while the tolerance is ±30%) or 75% (while the tolerance is ±20%) of it's nominal.

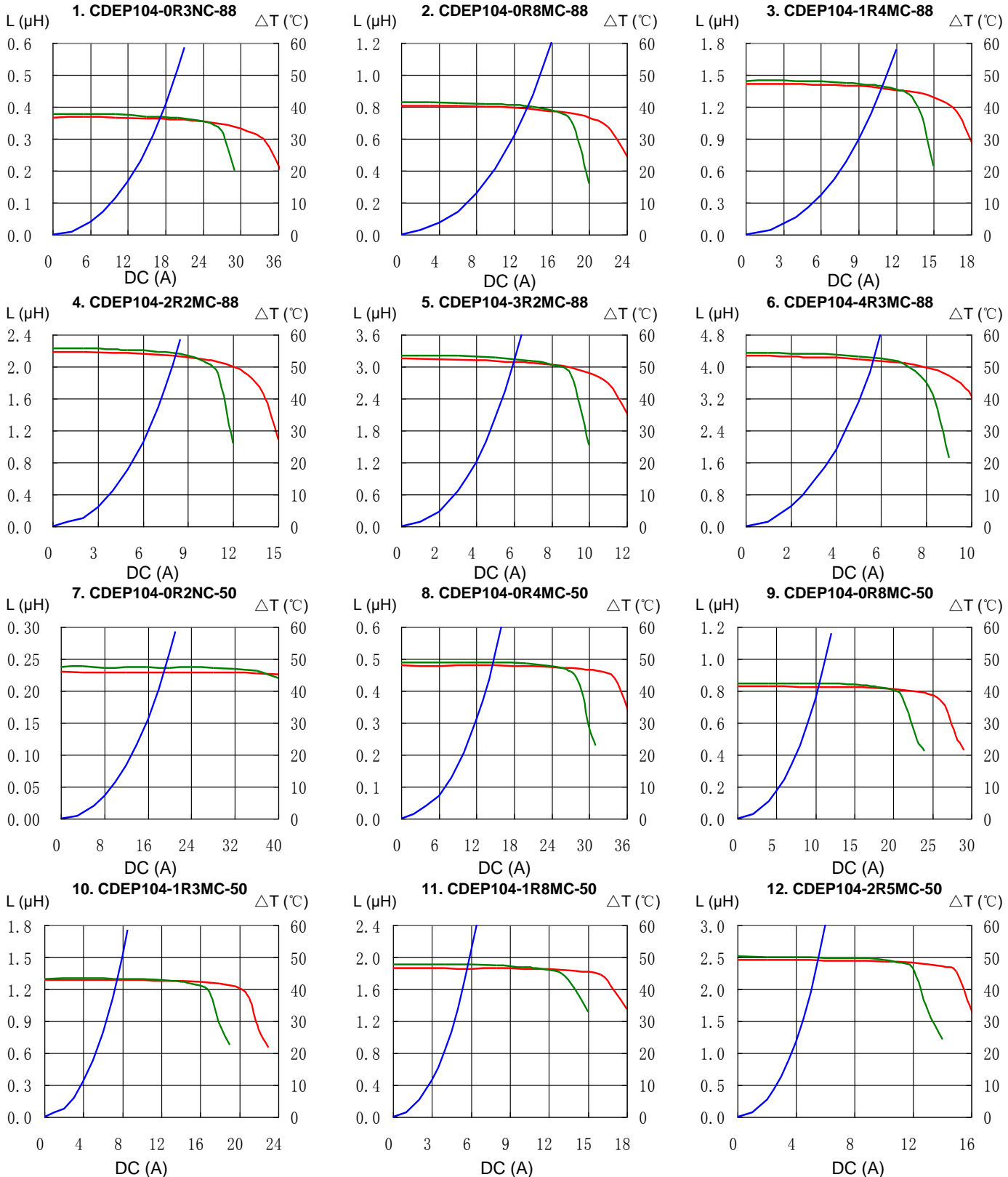
※3. Temperature rise current: The value of D.C. current when the temperature rise is Δt=40°C(Ta=20°C).

SMD Power Inductor CDEP104

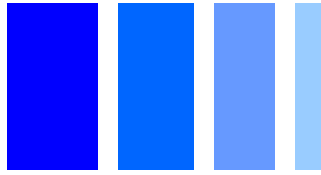


Saturation Current & Temperature Rise Graph

— L (20°C) — L (100°C) — ΔT

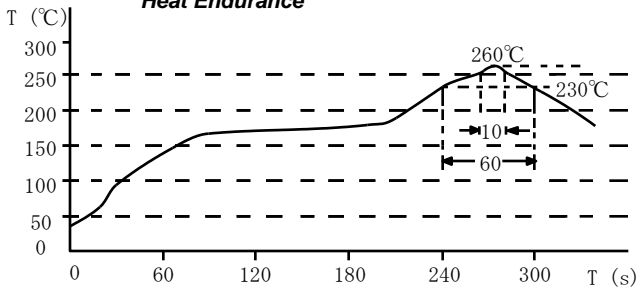


SMD Power Inductor CDEP104

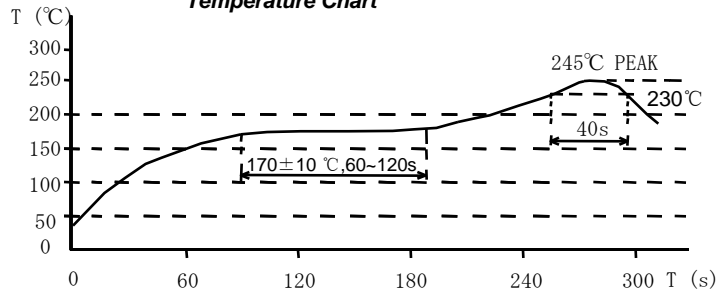


Solder Reflow Condition

Heat Endurance



Temperature Chart



Please refer to the sales offices on our website - <http://www.sumida.com>

Hong Kong

Tel.+852-2880-6781
FAX.+852-2565-9600
sales@hk.sumida.com

Saitama(Japan)

Tel.+81-48-691-7300
FAX.+81-48-691-7340
sales@jp.sumida.com

Chicago

Tel.+1-847-545-6700
FAX. +1-847-545-6720
sales@us.sumida.com

Shanghai

Tel.+86-21-5836-3299
FAX.+86-21-5836-3266
shanghai.sales@cn.sumida.com

Seoul

Tel.+82-2-6237-0777
FAX.+82-2-6237-0778
sales@kr.sumida.com

Obernzell

Tel.+49-8591-937-0
FAX. +49-8591-937-103
contact@eu.sumida.com

Shenzhen

Tel.+86-755-8291-0228
FAX.+86-755-8291-0338
shenzhen.sales@cn.sumida.com

Singapore

Tel.+65-6296-3388
FAX.+65-6841-4426
sales@sg.sumida.com

Neumarkt

Tel.+49-9181-4509-110
FAX. +49-9181-4509-310
infocomp@eu.sumida.com

Taipei

Tel.+886-2-8751-2737
FAX.+886-2-8751-2738
sales@tw.sumida.com

San Jose

Tel.+1-408-321-9660
FAX.+1-408-321-9308
sales@us.sumida.com