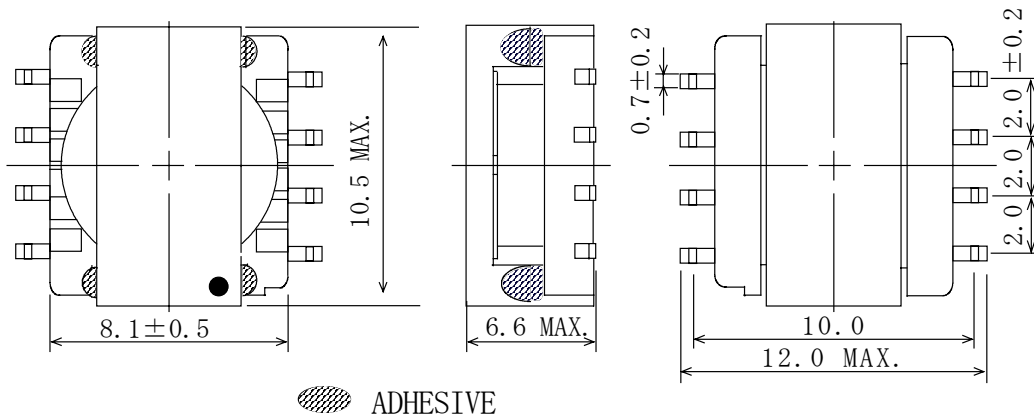
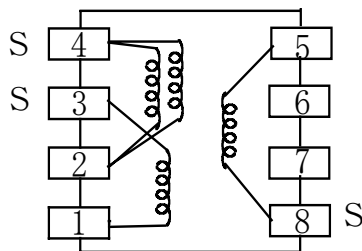


Type: CER95
◆ Product Description

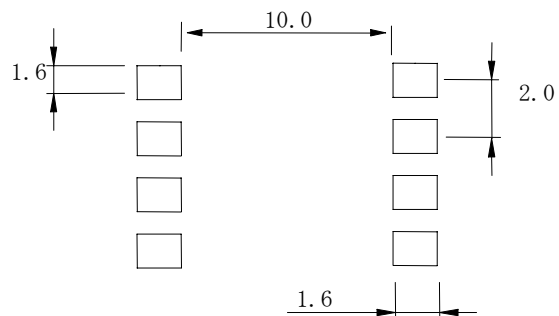
- 10.5×8.6mm Max.(L×W), 6.6mm Max. Height.
- In addition to the typical versions of parameters shown here, custom parameters are available to meet your exact requirements.


◆ Feature

- Max. Operating frequency 500KHz,Max. Operating Power 3.0W(500kHz).
- Ideally used in Portable equipment.
- RoHS Compliance.

◆ Dimensions (mm)

◆ Schematics (Bottom)


“S” indicates winding start.

◆ Land Pattern (mm)

◆ Specification

| Sample No. | Inductance (4-2) 100kHz/0.1V | D.C.R.(4-2) Max. | Leakage Inductance(4-2) 100kHz/0.1V | Turns ratio (4-2):(8-5):(3-1) | Hi-pot (1,2,3,4-5,8) |
|------------|---------------------------------|---------------------|---|-----------------------------------|-------------------------|
| PS05-030 | 430 μ H \pm 25% | 700m Ω | 5 μ H Max. | 1:0.33:0.33 | DC1500V/1s |