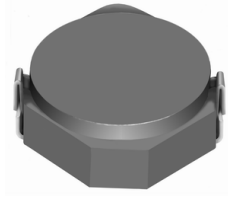


SMD Power Inductor CDRH4D14



Description

- Ferrite drum core construction.
- Magnetically shielded.
- L × W × H: 4.8 × 4.8 × 1.5 mm Max.
- Product weight: 98mg(Ref.)
- Moisture Sensitivity Level: 1
- RoHS compliance.

Environmental Data

- Operating temperature range: -40°C ~ +100°C (including coil's self temperature rise)
- Storage temperature range: -40°C ~ +100°C
- Solder reflow temperature: 260 °C peak.

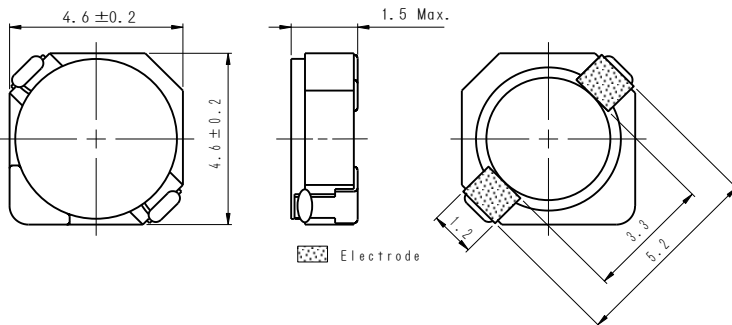
Packaging

- Carrier tape and reel packaging
- 7.0" diameter reel
- 1000pcs per reel

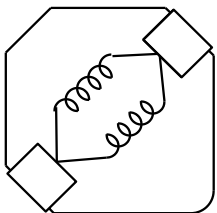
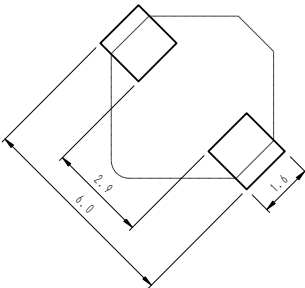
Applications

- Ideally used in Mobilephone, PDA, MP3, DSC/DVC, etc as DC-DC converter inductors.

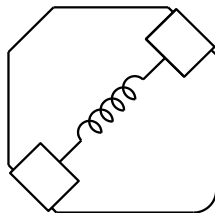
Dimension - [mm]



Land pattern and Schematics - [mm]



(1.2μH~6.8μH)



(8.2μH~68μH)

SMD Power Inductor

CDRH4D14



Electrical Characteristics

Part Name	Stamp	Inductance (μH) [within] ※1	D.C.R. (m Ω) Max. (Typ.) (at 20°C)	Saturation Current (A) ※2		Temperature Rise Current (A) ※3
				at 20°C	at 100°C	
CDRH4D14NP-1R2NC	1R2	1.2 \pm 30%	33(27)	1.90	1.20	2.60
CDRH4D14NP-2R2NC	2R2	2.2 \pm 30%	48(39)	1.60	1.10	2.35
CDRH4D14NP-3R0NC	3R0	3.0 \pm 30%	63(51)	1.40	1.00	2.15
CDRH4D14NP-4R7NC	4R7	4.7 \pm 30%	90(72)	1.10	0.80	1.55
CDRH4D14NP-6R8NC	6R8	6.8 \pm 30%	125(100)	0.90	0.69	1.20
CDRH4D14NP-8R2NC	8R2	8.2 \pm 30%	175(138)	0.75	0.60	0.99
CDRH4D14NP-100MC	100	10 \pm 20%	185(150)	0.73	0.57	0.90
CDRH4D14NP-120MC	120	12 \pm 20%	245(193)	0.64	0.48	0.80
CDRH4D14NP-150MC	150	15 \pm 20%	270(220)	0.59	0.44	0.74
CDRH4D14NP-220MC	220	22 \pm 20%	400(320)	0.50	0.35	0.63
CDRH4D14NP-330MC	330	33 \pm 20%	560(450)	0.41	0.29	0.50
CDRH4D14NP-470MC	470	47 \pm 20%	780(630)	0.35	0.24	0.42
CDRH4D14NP-560MC	560	56 \pm 20%	1085(867)	0.30	0.22	0.36
CDRH4D14NP-680MC	680	68 \pm 20%	1200(960)	0.28	0.20	0.33

※1. Inductance measuring condition: at 100kHz.

※2. Saturation current: The value of D.C. current when the inductance decreases to 65% of it's nominal value.

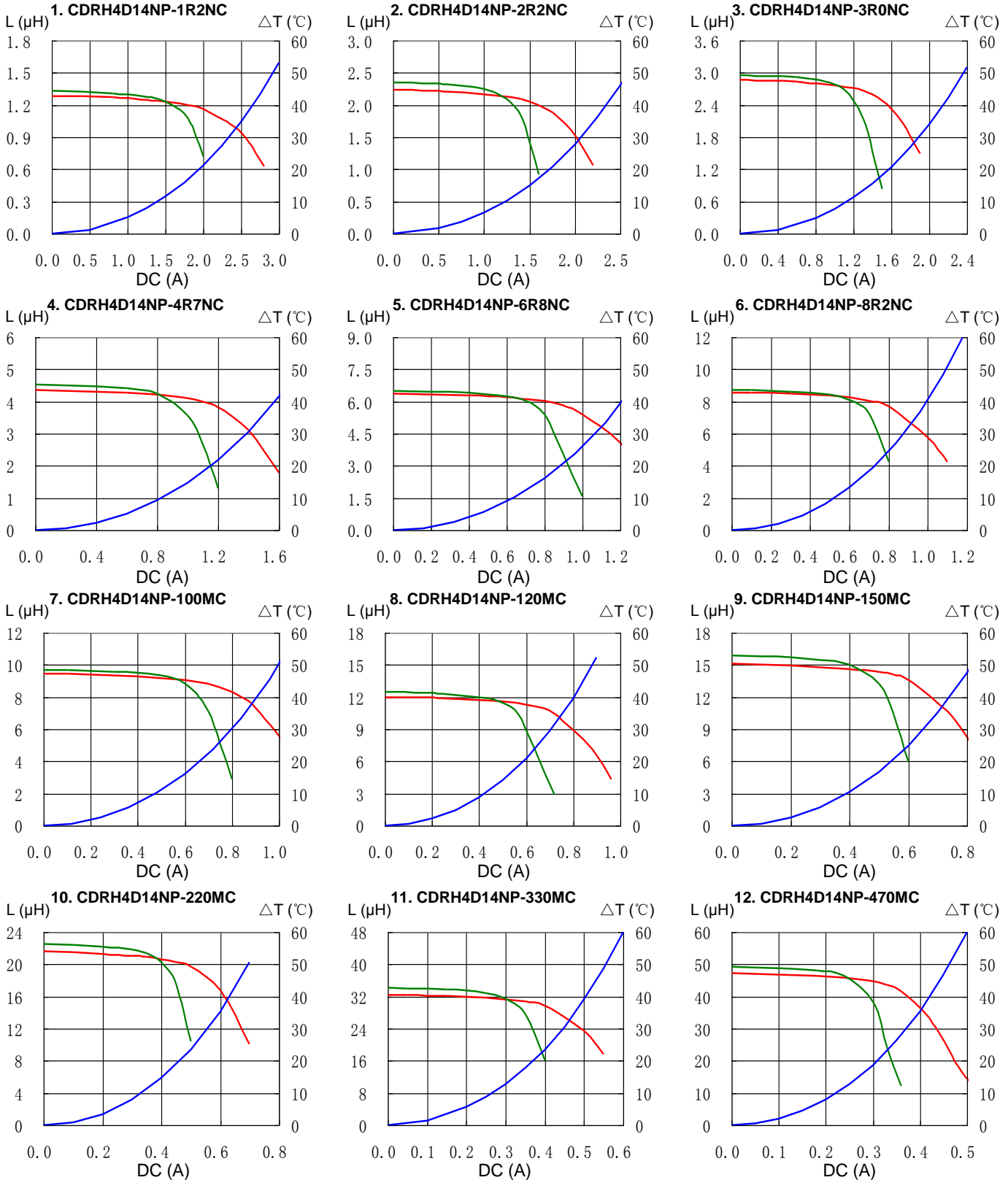
※3. Temperature rise current: The value of D.C. current when the temperature rise is $\Delta t=40^\circ\text{C}$ ($T_a=20^\circ\text{C}$).

SMD Power Inductor CDRH4D14

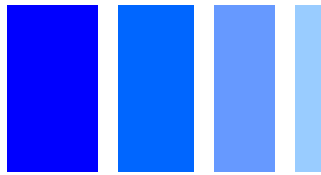


Saturation Current & Temperature Rise Graph

— L (20°C) — L (105°C) — ΔT

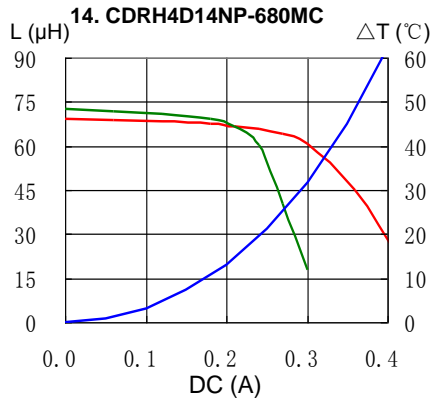
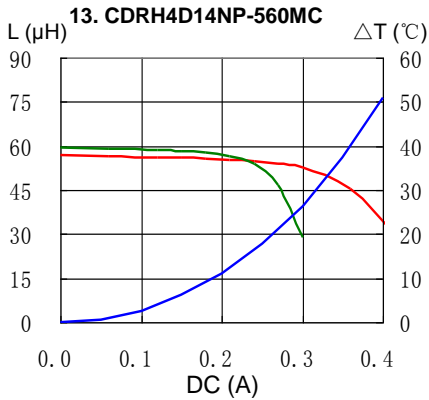


SMD Power Inductor CDRH4D14



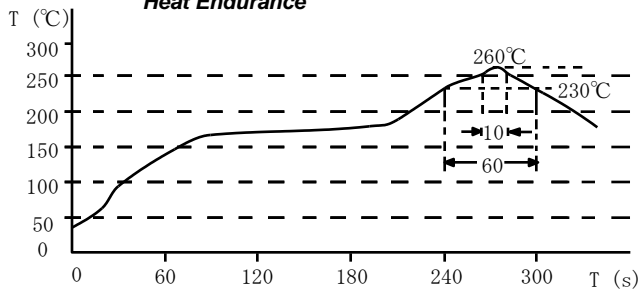
Saturation Current & Temperature Rise Graph

— L (20°C) — L (105°C) — ΔT

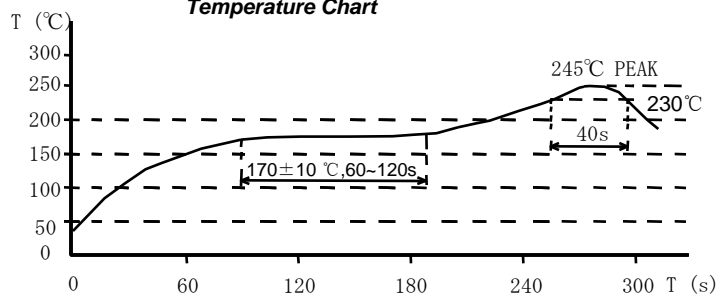


Solder Reflow Condition

Heat Endurance



Temperature Chart



Please refer to the sales offices on our website - <http://www.sumida.com>

Hong Kong

Tel.+852-2880-6781
FAX.+852-2565-9600
sales@hk.sumida.com

Saitama(Japan)

Tel.+81-48-691-7300
FAX.+81-48-691-7340
sales@jp.sumida.com

Chicago

Tel.+1-847-545-6700
FAX. +1-847-545-6720
sales@us.sumida.com

Shanghai

Tel.+86-21-5836-3299
FAX.+86-21-5836-3266
shanghai.sales@cn.sumida.com

Seoul

Tel.+82-2-6237-0777
FAX.+82-2-6237-0778
sales@kr.sumida.com

Obernzell

Tel.+49-8591-937-0
FAX. +49-8591-937-103
contact@eu.sumida.com

Shenzhen

Tel.+86-755-8291-0228
FAX.+86-755-8291-0338
shenzhen.sales@cn.sumida.com

Singapore

Tel.+65-6296-3388
FAX.+65-6841-4426
sales@sg.sumida.com

Neumarkt

Tel.+49-9181-4509-110
FAX. +49-9181-4509-310
infocomp@eu.sumida.com

Taipei

Tel.+886-2-8751-2737
FAX.+886-2-8751-2738
sales@tw.sumida.com

San Jose

Tel.+1-408-321-9660
FAX.+1-408-321-9308
sales@us.sumida.com