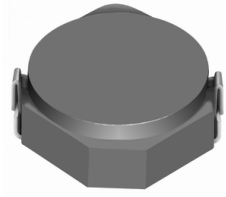


SMD Power Inductor CDRH4D14



Description

- Ferrite drum core construction.
- Magnetically shielded.
- L × W × H: 4.8 × 4.8 × 1.5 mm Max.
- Product weight: 98mg(Ref.)
- Moisture Sensitivity Level: 1
- RoHS compliance.

Environmental Data

- Operating temperature range: -40°C ~ +100°C (including coil's self temperature rise)
- Storage temperature range: -40°C ~ +100°C
- Solder reflow temperature: 260 °C peak.

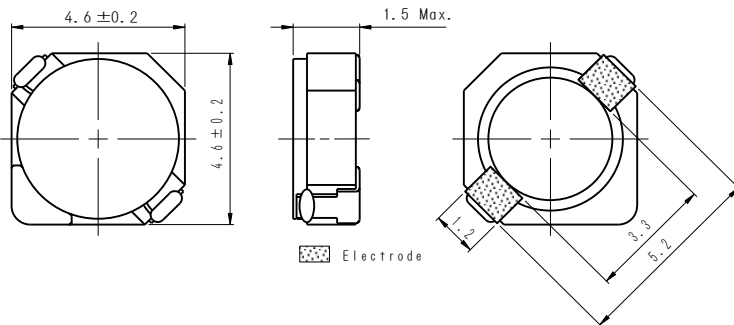
Packaging

- Carrier tape and reel packaging
- 7.0" diameter reel
- 1000pcs per reel

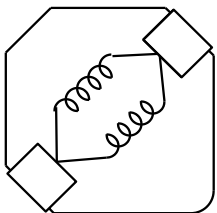
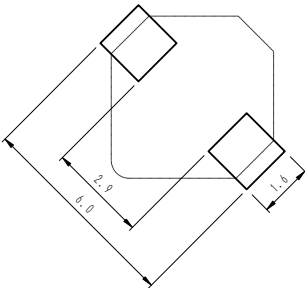
Applications

- Ideally used in Mobilephone, PDA, MP3, DSC/DVC, etc as DC-DC converter inductors.

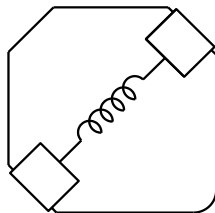
Dimension - [mm]



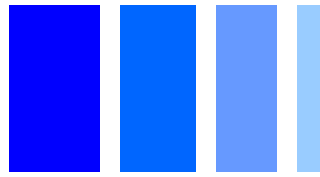
Land pattern and Schematics - [mm]



(1.2μH~6.8μH)



(8.2μH~68μH)



Electrical Characteristics

| Part Name | Stamp | Inductance (μH) [within] ※1 | D.C.R. (m Ω) Max. (Typ.) (at 20°C) | Saturation Current (A) ※2 | | Temperature Rise Current (A) ※3 |
|------------------|-------|--|--|------------------------------|----------|---------------------------------------|
| | | | | at 20°C | at 100°C | |
| CDRH4D14NP-1R2NC | 1R2 | 1.2 \pm 30% | 33(27) | 1.90 | 1.20 | 2.60 |
| CDRH4D14NP-2R2NC | 2R2 | 2.2 \pm 30% | 48(39) | 1.60 | 1.10 | 2.35 |
| CDRH4D14NP-3R0NC | 3R0 | 3.0 \pm 30% | 63(51) | 1.40 | 1.00 | 2.15 |
| CDRH4D14NP-4R7NC | 4R7 | 4.7 \pm 30% | 90(72) | 1.10 | 0.80 | 1.55 |
| CDRH4D14NP-6R8NC | 6R8 | 6.8 \pm 30% | 125(100) | 0.90 | 0.69 | 1.20 |
| CDRH4D14NP-8R2NC | 8R2 | 8.2 \pm 30% | 175(138) | 0.75 | 0.60 | 0.99 |
| CDRH4D14NP-100MC | 100 | 10 \pm 20% | 185(150) | 0.73 | 0.57 | 0.90 |
| CDRH4D14NP-120MC | 120 | 12 \pm 20% | 245(193) | 0.64 | 0.48 | 0.80 |
| CDRH4D14NP-150MC | 150 | 15 \pm 20% | 270(220) | 0.59 | 0.44 | 0.74 |
| CDRH4D14NP-220MC | 220 | 22 \pm 20% | 400(320) | 0.50 | 0.35 | 0.63 |
| CDRH4D14NP-330MC | 330 | 33 \pm 20% | 560(450) | 0.41 | 0.29 | 0.50 |
| CDRH4D14NP-470MC | 470 | 47 \pm 20% | 780(630) | 0.35 | 0.24 | 0.42 |
| CDRH4D14NP-560MC | 560 | 56 \pm 20% | 1085(867) | 0.30 | 0.22 | 0.36 |
| CDRH4D14NP-680MC | 680 | 68 \pm 20% | 1200(960) | 0.28 | 0.20 | 0.33 |

※1. Inductance measuring condition: at 100kHz.

※2. Saturation current: The value of D.C. current when the inductance decreases to 65% of it's nominal value.

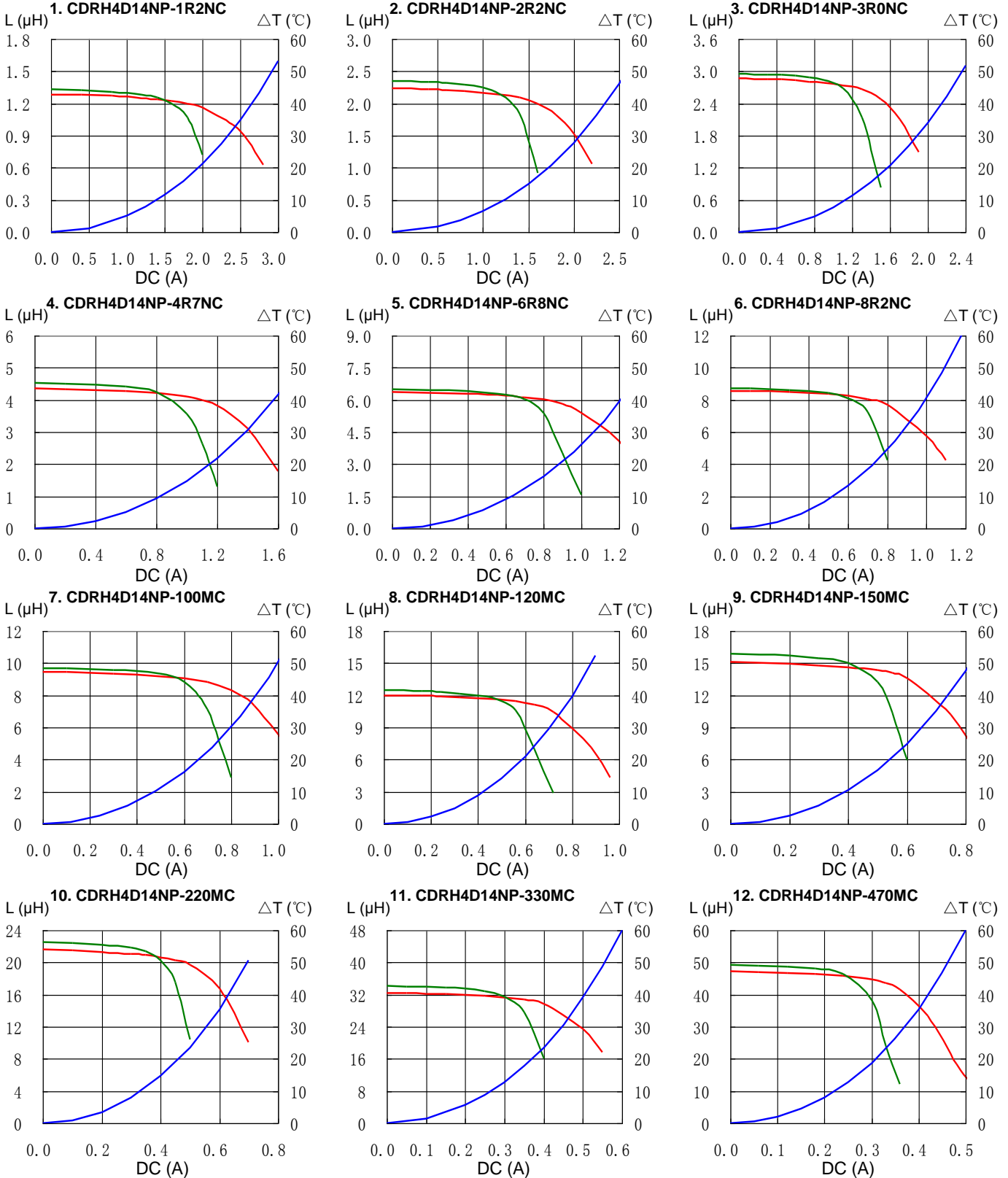
※3. Temperature rise current: The value of D.C. current when the temperature rise is $\Delta t=40^\circ\text{C}$ ($T_a=20^\circ\text{C}$).

SMD Power Inductor CDRH4D14

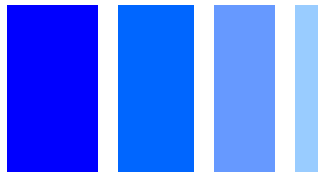


Saturation Current & Temperature Rise Graph

— L (20°C) — L (105°C) — ΔT

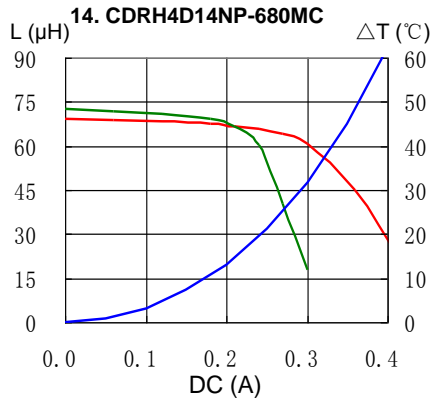
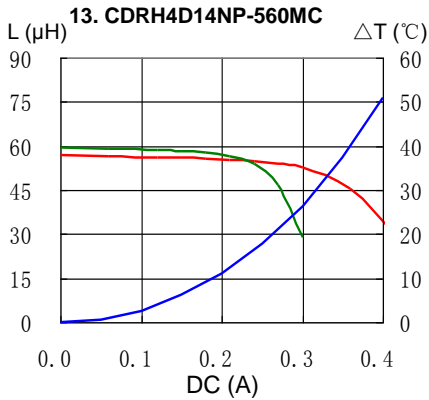


SMD Power Inductor CDRH4D14



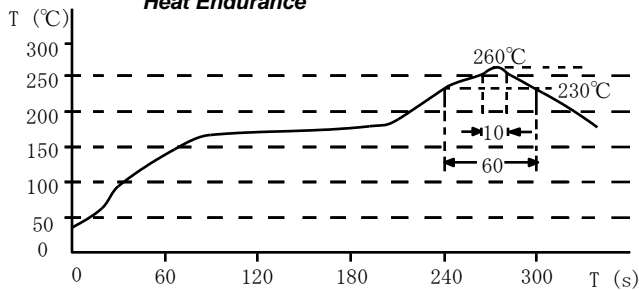
Saturation Current & Temperature Rise Graph

— L (20°C) — L (105°C) — ΔT

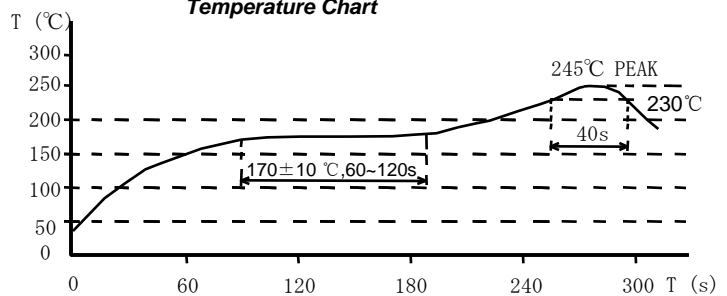


Solder Reflow Condition

Heat Endurance



Temperature Chart



Please refer to the sales offices on our website - <http://www.sumida.com>

Hong Kong

Tel.+852-2880-6781
FAX.+852-2565-9600
sales@hk.sumida.com

Saitama(Japan)

Tel.+81-48-691-7300
FAX.+81-48-691-7340
sales@jp.sumida.com

Chicago

Tel.+1-847-545-6700
FAX. +1-847-545-6720
sales@us.sumida.com

Shanghai

Tel.+86-21-5836-3299
FAX.+86-21-5836-3266
shanghai.sales@cn.sumida.com

Seoul

Tel.+82-2-6237-0777
FAX.+82-2-6237-0778
sales@kr.sumida.com

Obernzell

Tel.+49-8591-937-0
FAX. +49-8591-937-103
contact@eu.sumida.com

Shenzhen

Tel.+86-755-8291-0228
FAX.+86-755-8291-0338
shenzhen.sales@cn.sumida.com

Singapore

Tel.+65-6296-3388
FAX.+65-6841-4426
sales@sg.sumida.com

Neumarkt

Tel.+49-9181-4509-110
FAX. +49-9181-4509-310
infocomp@eu.sumida.com

Taipei

Tel.+886-2-8751-2737
FAX.+886-2-8751-2738
sales@tw.sumida.com

San Jose

Tel.+1-408-321-9660
FAX.+1-408-321-9308
sales@us.sumida.com