

SWITCHCRAFT

5555 N. Elston Ave. • Chicago, Illinois 60630
Phone: (312) 792-2700 • TWX: 910-221-5199

DW "Multi-Switch"® Switch Specifications

U.S. Pat. No. 3,517,140 Canadian Pat. No. 882,307

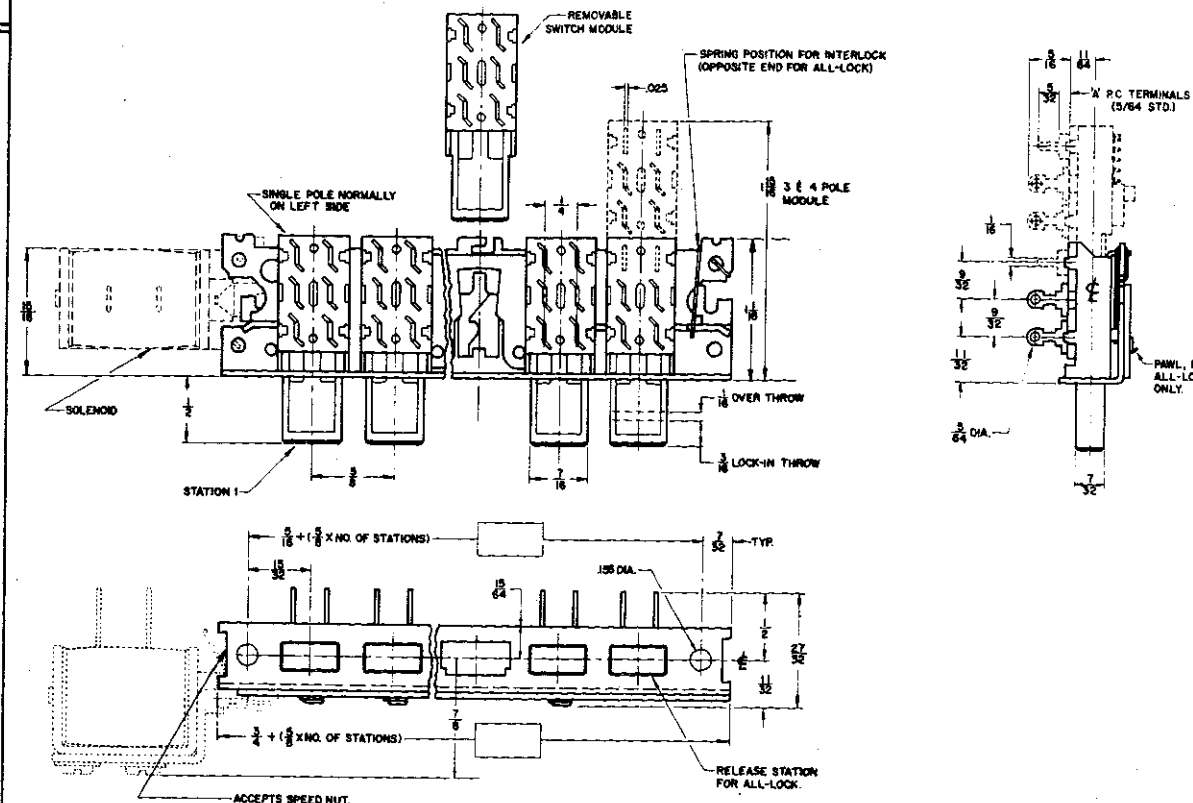
SERIES
65000

THIS PRINT DESCRIBES A DESIGN CONSIDERED PROPRIETARY IN NATURE, DEVELOPED AND MANUFACTURED BY SWITCHCRAFT, INC., AND IS RELEASED ON A CONFIDENTIAL BASIS FOR IDENTIFICATION PURPOSES ONLY. WE RESERVE THE RIGHT TO CHANGE THE SPECIFICATIONS AND/OR PART NUMBERS CONTAINED HEREIN WHEN CIRCUMSTANCES MAKE IT NECESSARY.

| | | | | | | | | | | | | | | | | | | |
|--|---------------|-------|------|---|---|---|---|---|---|----|----|----|----|----|----|----|----|----|
| CIRCUITS | 4'C | 4'C | | | | | | | | | | | | | | | | |
| PUSHBUTTON COLOR | Black | Black | | | | | | | | | | | | | | | | |
| HOT STAMPING (Indicate Orientation) | | | | | | | | | | | | | | | | | | |
| FOR SWITCHCRAFT USE ONLY | REAR SECTION | A10A | A10A | | | | | | | | | | | | | | | |
| | FRONT SECTION | 7512 | 7512 | | | | | | | | | | | | | | | |
| STATION NO. | 1 | 2 | 3 | 4 | 5 | 6 | 7 | 8 | 9 | 10 | 11 | 12 | 13 | 14 | 15 | 16 | 17 | 18 |

FOR COMPLETE DATA, REFER TO SWITCHCRAFT DW "MULTI-SWITCH"® SWITCH CATALOG

- NO. OF STATIONS: (Including Release Sta.) 2
- SWITCH MOUNTING POSITION:
Horizontal Vertical
- MECHANICAL FUNCTION:
Interlock (to 12 Sta.)
Non-Lock
All-Lock (to 12 Sta.)
Push-Lock/Push-Release
Push-Lock/Push-Release (With common release) (to 12 Sta.)
Special (Specify in "NOTE" Section)
- LOCK-OUT FUNCTION:
With Without
- SPECIAL FEATURES:
SOLENOID RELEASE—115 VAC, 60 Hz (Std)
Other AC Source (Specify) _____
DC Source (Specify) _____
GANGED ASSEMBLIES—No. of Rows _____
No. of Stations, each Row _____
Twin Row (2 Rows Only, Back-to-Back, Row Centers, 3/4" (Std)
Multiple Row (2 or More), Row Centers, 1 1/8" (Std)
Row Centers, Special, to 3" (Specify) _____
Banking Only (No Interaction Between Rows)
Banking and Coupling (Interaction Between Rows)
DW ESCUTCHEON MODULES—DW-100 DW-200
Red Black White Other (Specify) _____
- PUSHBUTTON COLOR:
Red Black, (Std) White Other (Specify) _____
- CIRCUIT FORMS: (Specify Above)
- CONTACT & TERMINAL PLATING: Silver (Std)
Other (Specify) _____
- TERMINALS: Solder Type (Std)
PC Type (Specify "A" Dim. from Catalog)



"NOTES" FOR GANGED ASSEMBLY, SPECIAL SWITCH, OR OTHER SPECIAL REQUIREMENTS, INDICATE PANEL ARRANGEMENT, ENVELOPE SIZE, LEGEND HEIGHT, ETC., BELOW.

ASSEMBLE ITEMS 1-5 PER C-1219

GENERAL SPECIFICATIONS

FRAME, LATCH BAR, HOUSING: Steel, Iridescent, Iridite over cad. plate (MIL-P-416A).
PUSHBUTTON ACTUATOR: POLYAMIDE THERMOPLASTIC (MIL-M-20693).
INSULATION: PHENOLIC (MIL-P-3115B).
CONTACTS: BRASS, SILVER PLATED (STD).
SWITCH MODULE RATING: 3 AMP. AC, .5 AMP DC; 125V.

NOTE: RETURN THIS TRANSPARENCY OR 3 COPIES WITH INQUIRY OR ORDER.

| | | | | | |
|-----------|------|-----------------------|----------------|------|-----------|
| CUSTOMER | STD. | ENG. | SS | DATE | 5/26/94 |
| CUST. NO. | | SWITCH-CRAFT PART NO. | SAMPLE NO. XM- | | ISSUE NO. |
| REF. NO. | | | 65021K212 | A | |

522-XM-