

# Inductors

## For Power Line SMD

## VLF Series VLF5014A Type

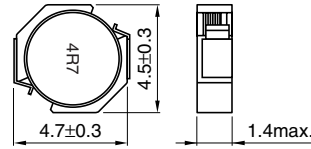
### FEATURES

- Miniature size  
Mount area: 4.5×4.7mm  
Low profile: 1.4mm max. height
- Generic use for portable DC to DC converter line
- High magnetic shield construction should actualize high resolution for EMC protection.
- Available for automatic mounting in tape and reel package.
- The products do not contain lead and support lead-free soldering.

### APPLICATIONS

DVCs, DSCs, PDAs, MDs, LCD displays,  
Cellular phones, cordless telephones, HDDs, FDDs, etc.

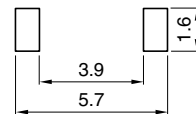
### SHAPES AND DIMENSIONS



Dimensions in mm



### RECOMMENDED PC BOARD PATTERN



Dimensions in mm

### ELECTRICAL CHARACTERISTICS

Part No.	Inductance ( $\mu$ H)	Inductance tolerance(%)	Test frequency (kHz)	DC resistance( $\Omega$ )		Rated current(A)*	
				max.	typ.	Based on inductance change max.	Based on temperature rise typ.
VLF5014AT-4R7M1R1	4.7	$\pm$ 20	100	0.13	0.12	1.7	1.1
VLF5014AT-6R8MR99	6.8	$\pm$ 20	100	0.19	0.16	1.4	0.99
VLF5014AT-100MR92	10	$\pm$ 20	100	0.22	0.19	1.1	0.92
VLF5014AT-150MR76	15	$\pm$ 20	100	0.32	0.28	0.97	0.8

\* Rated current: Value obtained when current flows and the temperature has risen to 40°C or when DC current flows and the nominal value of inductance has fallen by 30%, whichever is smaller.

- Operating temperature range: -40 to +105°C (Including self-temperature rise)

# Inductors

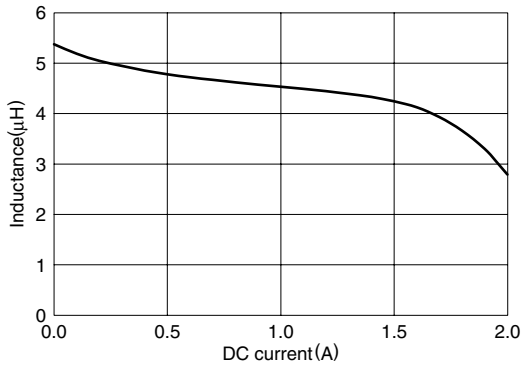
For Power Line  
SMD

## VLF Series VLF5014A Type

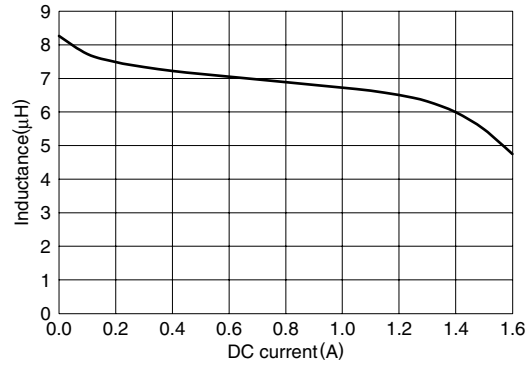
### TYPICAL ELECTRICAL CHARACTERISTICS

#### INDUCTANCE vs. DC SUPERPOSITION CHARACTERISTICS

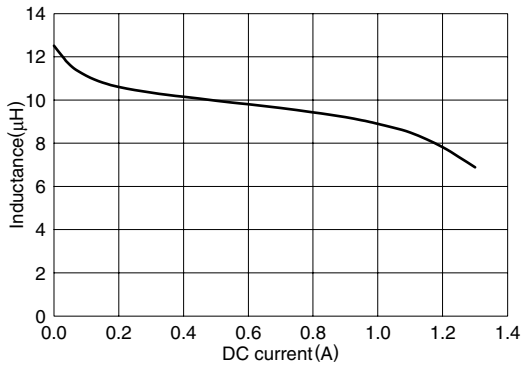
VLF5014AT-4R7M1R1



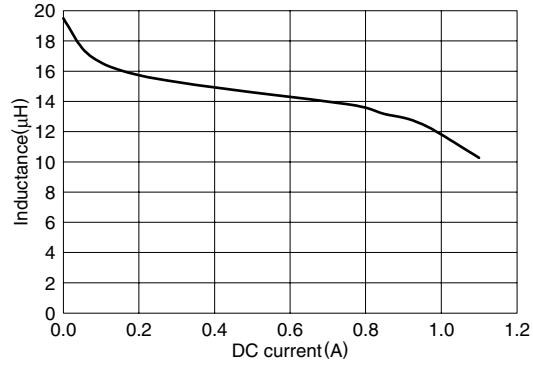
VLF5014AT-6R8MR99



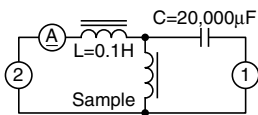
VLF5014AT-100MR92



VLF5014AT-150MR76



### TEST CIRCUIT



1: LCR meter 4285A=100kHz  
 2: DC constant current