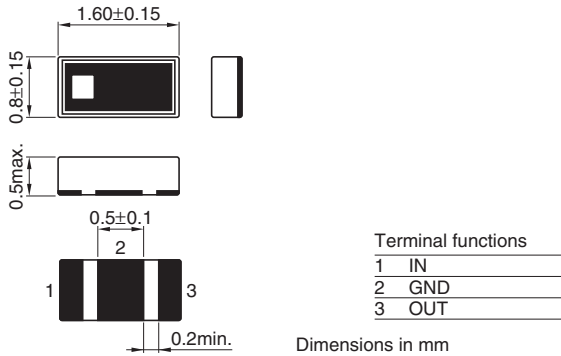


# Multilayer Chip Band Pass Filters For 2.4GHz W-LAN/Bluetooth

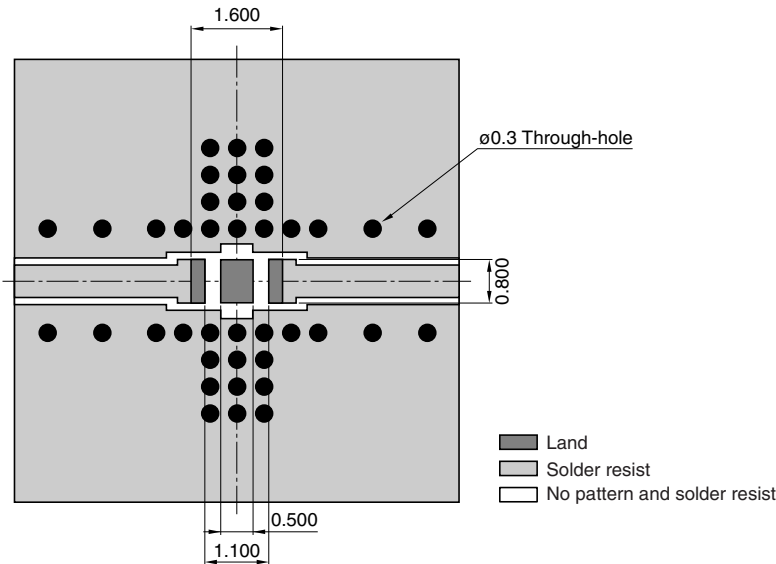
Conformity to RoHS Directive

DEA Series DEA162450BT-2139A1

## SHAPES AND DIMENSIONS



## RECOMMENDED PC BOARD PATTERNS



Line width be designed to match 50Ω characteristic impedance depending on PCB material and thickness.

## ELECTRICAL CHARACTERISTICS

Item		Typical value
Frequency range(Pass band)	2400 to 2500MHz	2400 to 2500MHz
Insertion loss	[+25°C]	3.0dB max.
	[-40 to +85°C]	—
VSWR	[2400 to 2500MHz]	2.32 max.
	[869 to 894MHz]	34dB min.
	[925 to 960MHz]	33dB min.
	[1570 to 1580MHz]	30dB min.
	[1710 to 1785MHz]	30dB min.
	[1805 to 1850MHz]	30dB min.
	[1930 to 1990MHz]	30dB min.
Attenuation	[2110 to 2170MHz]	25dB min.
	[2110 to 2170MHz]	25dB min.
	[2110 to 2170MHz]	25dB min.
	[2110 to 2170MHz]	25dB min.
	[2110 to 2170MHz]	25dB min.
Temperature range	Operating	-40 to +85°C
	Storage	-40 to +85°C

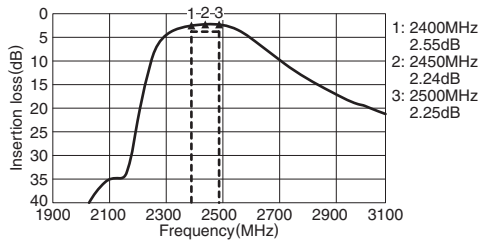
• Ta:+25°C

• Conformity to RoHS Directive: This means that, in conformity with EU Directive 2002/95/EC, lead, cadmium, mercury, hexavalent chromium, and specific bromine-based flame retardants, PBB and PBDE, have not been used, except for exempted applications.

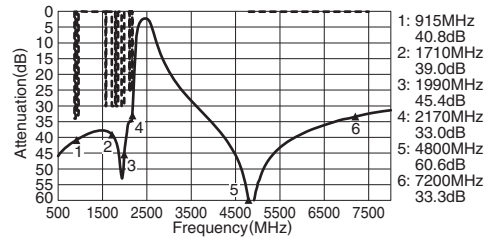
• All specifications are subject to change without notice.

### FREQUENCY CHARACTERISTICS

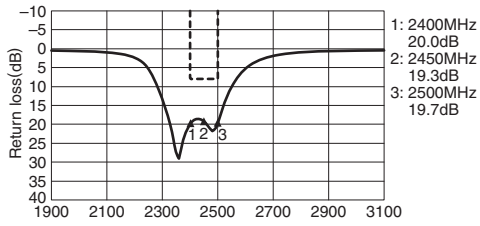
#### INSERTION LOSS



#### ATTENUATION



#### RETURN LOSS



#### VSWR

