

Power Supplies

DC to AC Inverters

For 2 Bulb, 7W Diming

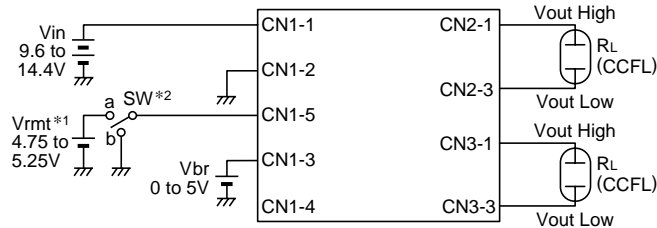
CXA Series CXA-P1212-VJL

ELECTRICAL CHARACTERISTICS

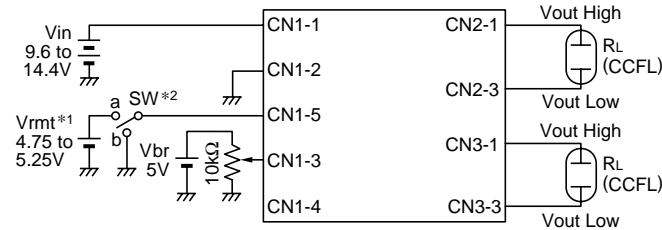
Items		Specifications			Conditions				Brightness	
		min.	typ.	max.	Vin(V)	Vbright(V)	Ta(°C)	RL(kΩ)		
Output current	Irms(mA)	lout1	5.3	6	6.7	12±2.4	0	0 to +70	76 to 114	Maximum
		lout2	5.3	6	6.7	12±2.4	0	0 to +70	76 to 114	Maximum
		lout1	5.5	6	6.5	12±1.2	0	0 to +70	95	Maximum
		lout2	5.5	6	6.5	12±1.2	0	0 to +70	95	Maximum
		lout1	1.7	2	2.4	12±1.2	3.4	0 to +70	250	Minimum
		lout2	1.7	2	2.4	12±1.2	3.4	0 to +70	250	Minimum
Input current	Idc(A)	lin	—	0.76	1.3	12±2.4	0 to 3.4	0 to +70	76 to 114	
Oscillation frequency	(kHz)	f	52	58	64	12±2.4	0	0 to +70	95	
Open circuit output voltage	Erms(V)	Vopen	1400	1500	2000	12±2.4	0	0 to +70	∞	

TYPICAL CONNECTIONS

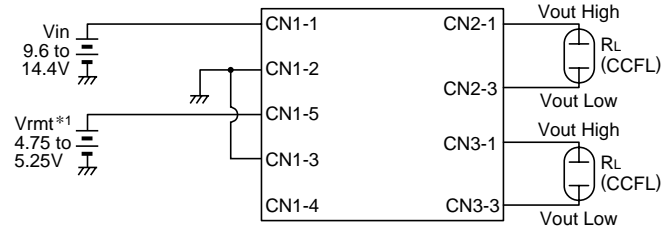
EXAMPLE OF VOLTAGE DIMMER CONTROL



EXAMPLE OF POTENTIOMETER DIMMER CONTROL



NO DIMMER CONTROL

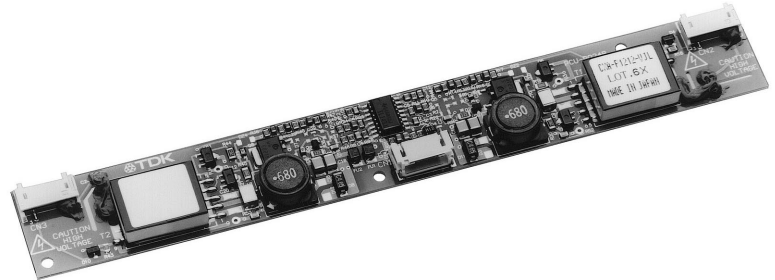
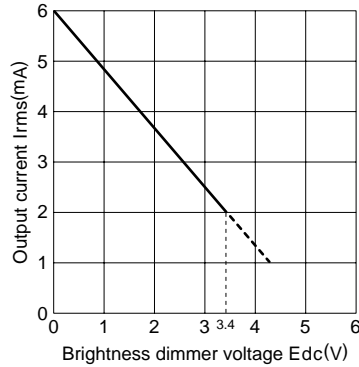


*1 Vbrmt (remote voltage) shall be ON after Vin was ON.

*2 SW a: ON, b: OFF

TYPICAL ELECTRICAL CHARACTERISTICS

OUTPUT CURRENT vs. BRIGHTNESS DIMMER VOLTAGE



A442_CXAP1212
980911