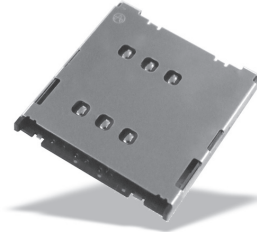




### Specifications

Insulation Resistance:	500MΩ min. at 500V DC
Withstanding Voltage:	250V ACrms for 1 minute
Contact Resistance:	100mΩ max. at 10mA / 20mV max.
Current Rating:	0.5A
Voltage Rating:	5.0V AC rms
Operating Temp. Range:	-25°C to +85°C
Mating Cycles:	5,000 insertions



### Part Number (Details)

**FMS006 - 5100-0**

Series No.

Design No.

### Materials and Finish

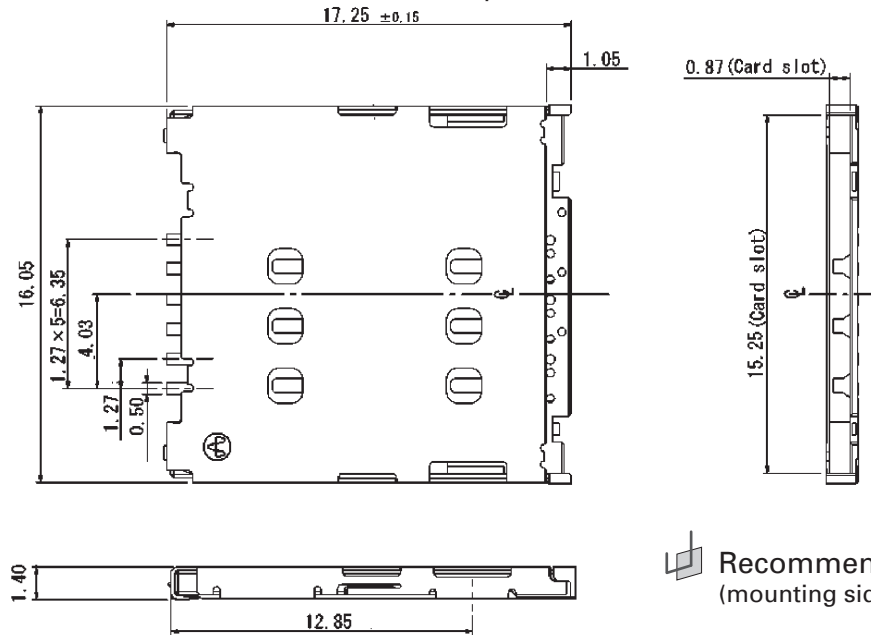
Insulator:	Heat Resistant Plastic
Contact:	Copper Alloy, Ni-Au
Reinforce metal:	SUS
Metal Cover:	SUS, Plating Gold over Nickel

### Features

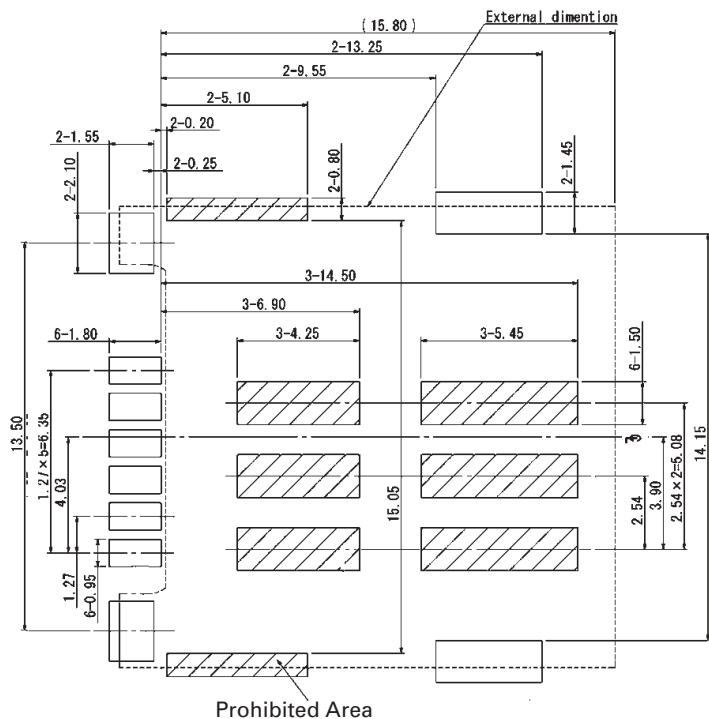
- Manual type
- Super low profile design ht. = 1.40mm
- Top mount
- Static discontinuity prevention
- Tape and Reel (1,300 pcs./reel)



### Outline Connector Dimensions (top view)



### Recommended PCB Layout (mounting side)



### Card Insertion

