

**SPECIFICATIONS**

Insulation Resistance:	250MΩ at 500V DC
Withstanding Voltage:	500V ACrms for 1 minute
Contact Resistance:	40mΩ max.
Current Rating:	0.5A
Voltage Rating:	50V DC
Operating Temp. Range:	-40°C to +85°C
Mating Cycles:	30 times

**MATERIALS AND FINISH**

Insulator:	LCP (UL 94V-0)
Contacts:	High Performance Copper Alloy
Contact Plating:	Contact Area - Selective Gold Flash, 15μ" or 30μ" Solder Area - Gold Flash Underplate - Ni

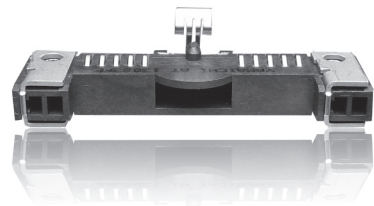
**FEATURES**

- Transferring power via 10 x 1.5A
- For use together with BEC high speed version
- Supporting assembly of module through additional spring
- Additional fixation of the module with screws at the connector possible
- Mating height 5mm
- Production site TS16949 certified

**PART NUMBER**

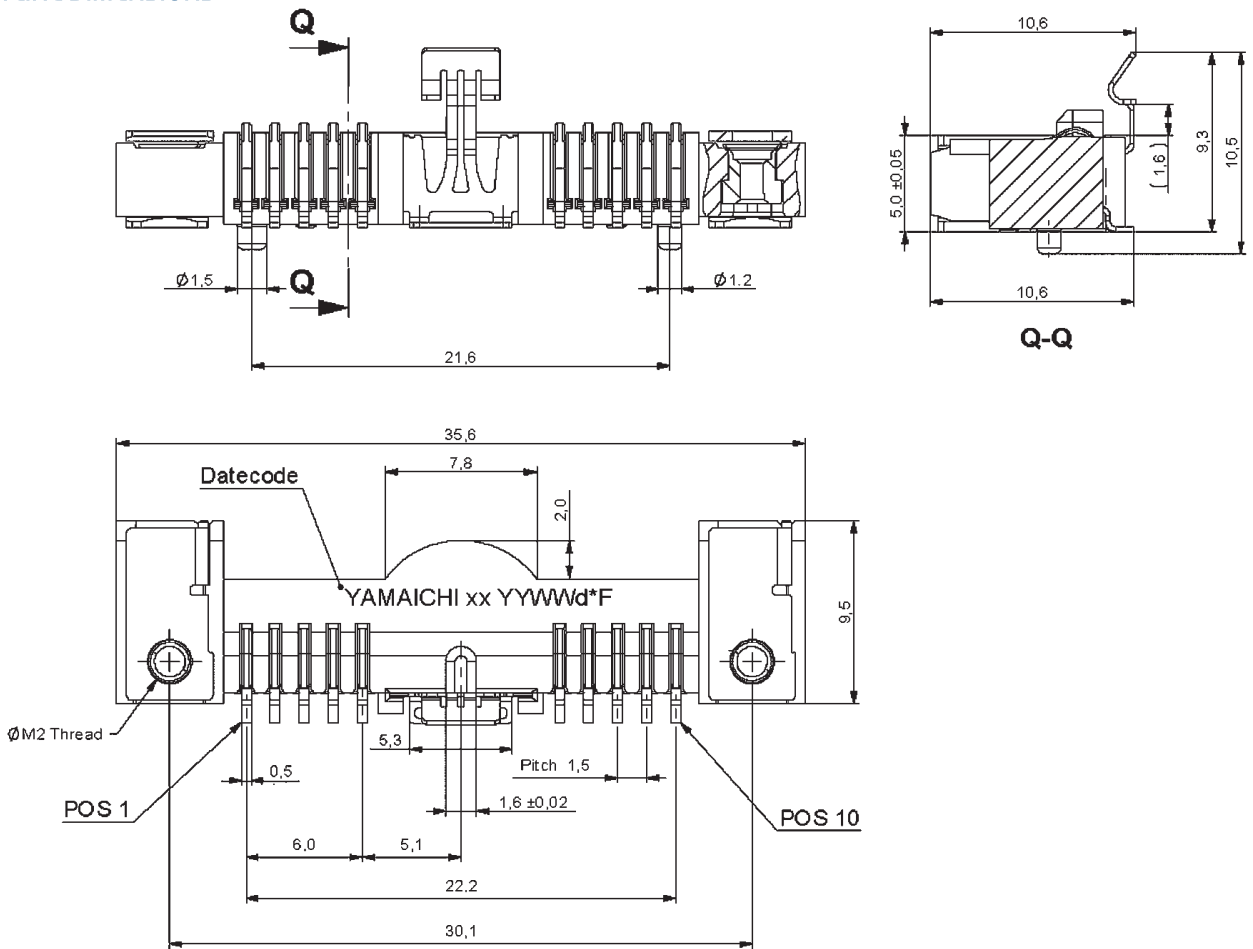
**BECPW -1.5 - 10 - S9 - \*F - R - EDC**

Series	↑
Pitch: 1.50mm	↑
Pin Count: 10	↑
Orientation: 90°	↑
Contact Area Plating FF = Gold Flash BF = 15μ" Au AF = 30μ" Au	↑
Tape and Reel (450pcs. per reel)	↑
Design No. (internal)	↑



**AUTOMOTIVE COMPLIANT**

**OUTLINE DIMENSIONS**



**RECOMENDED PCB LAYOUT FOR BEC AND POWER CONNECTOR**

