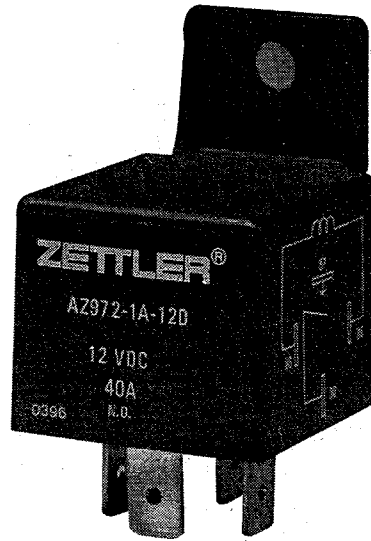


AZ972

40 AMP AUTOMOTIVE RELAY

FEATURES

- 40 Amp contact rating
- High momentary carry current (60A)
- High operating temperature (155°C)
- SPST (1 Form A), SPDT (1 Form C)
- Quick connect terminals
- Mounting bracket



CONTACTS

Arrangement	SPST (1 Form A) SPDT (1 Form C)
Ratings	Resistive load: Max. switched power: 560 W (SPST) 560 W (N.O.) 420 W (N.C.) Max. switched current: 40 A (SPST) 40 A (N.O.) 30 A (N.C.) Max. switched voltage: 75 VDC
Minimum Load	5 VDC, 0.1 A
Material	Silver alloy
Resistance	< 50 milliohms initially (24V, 1 A voltage drop method)

GENERAL DATA

Life Expectancy Mechanical Electrical	Minimum operations 1 x 10 ⁷ 1 x 10 ⁵ at rated load
Operate Time (typical)	10 ms at nominal coil voltage
Release Time (typical)	10 ms at nominal coil voltage (with no coil suppression)
Dielectric Strength (at sea level for 1 min.)	750 Vrms coil to contact 750 Vrms contact to contact
Insulation Resistance	100 megohms min. at 500 VDC, 20°C 50% RH
Dropout	Greater than 10% of nominal coil voltage
Ambient Temperature Operating Storage	-55°C (-67°F) to 155°C (311°F) -55°C (-67°F) to 200°C (392°F)
Vibration	0.62" DA at 20-200 Hz
Shock	20 g
Enclosure	P.B.T. polyester
Terminals	Tinned copper alloy 0.25 Quick Connect
Weight	30 grams

COIL

Power At Pickup Voltage (typical)	0.68 W
Max. Continuous Dissipation	6.4 W at 20°C (68°F)
Temperature Rise	63°C (113°F) at nominal coil voltage
Temperature	Max. 200°C (392°F)

NOTES

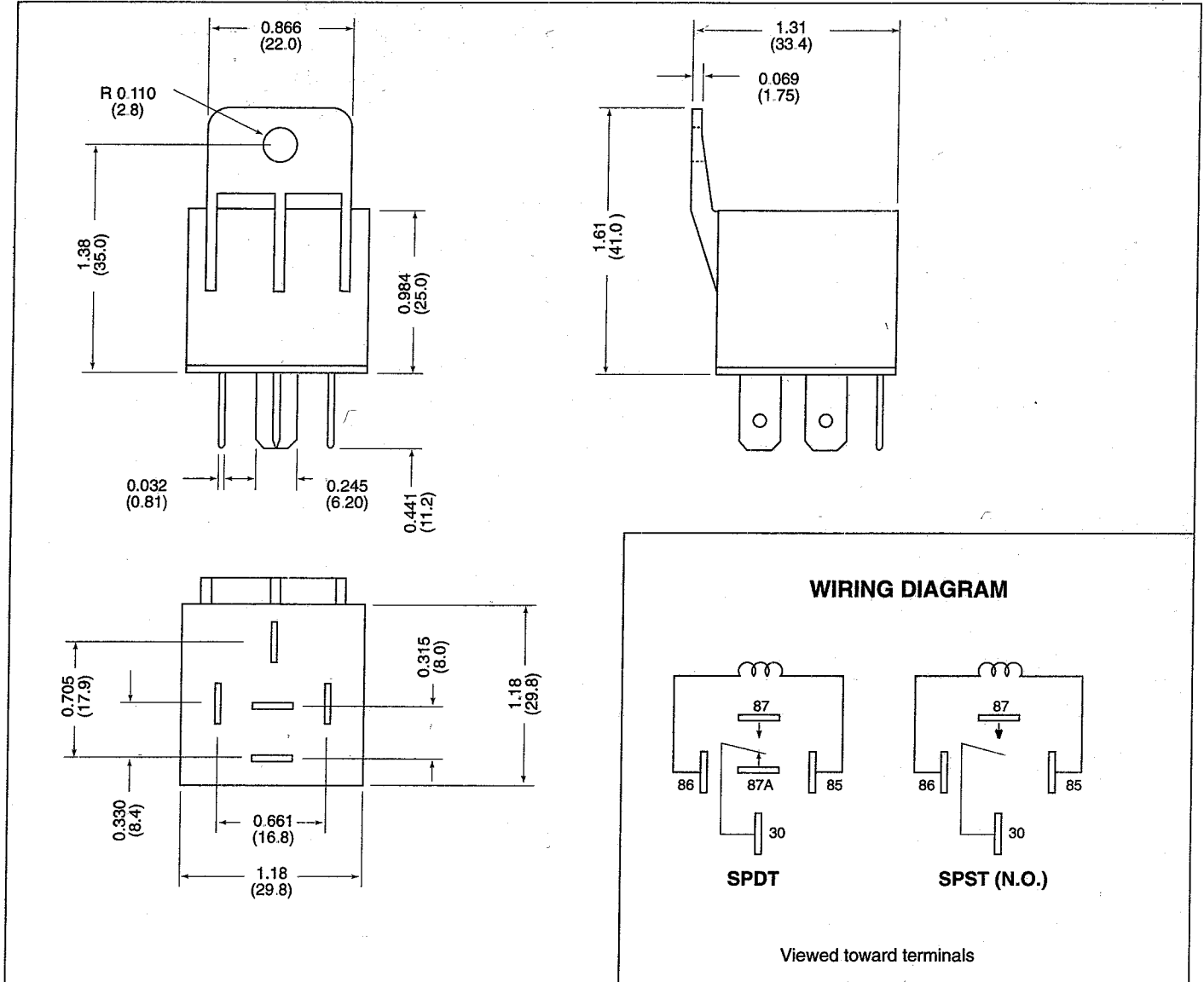
1. All values at 20°C (68°F).
2. Relay may pull in with less than "Must Operate" value.
3. Specifications subject to change without notice.



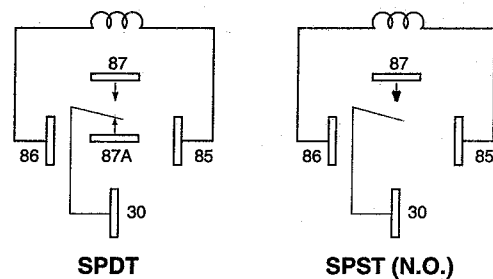
RELAY ORDERING DATA

COIL SPECIFICATIONS				ORDER NUMBER	
Nominal Coil VDC	Must Operate VDC	Max. Continuous VDC	Coil Resistance $\pm 10\%$	SPST	SPDT
6	3.9	12.0	22.5	AZ972-1A-6D	AZ972-1C-6D
12	7.8	24.0	90	AZ972-1A-12D	AZ972-1C-12D
24	15.6	48.0	360	AZ972-1A-24D	AZ972-1C-24D

MECHANICAL DATA



WIRING DIAGRAM



Viewed toward terminals



AMERICAN ZETTLER, INC.

75 COLUMBIA • ALISO VIEJO, CA 92656 • PHONE: (714) 831-5000 • FAX: (714) 831-8642 • E-MAIL: AZETTLER@ATTMAIL.COM