

802.11N 300M WIRELESS USB ADAPTER

BL-WN2210

RTL8192CU Chipset



Product description

This product is a mini USB wireless network card, employs 11n technology, and is backward compatible with IEEE802.11 b/g/n standards, can be communicated mutually with other wireless devices which meet the standards. It supports 64/128-bit WEP encryptions, as well as WPA/WPA2 and WPA-PSK/WPA2-PSK encryptions and mechanisms.

This product built-in two smart antennas, the signal can be multiplexed transceiver, wireless transmission rate up to 300Mbps. Compare with the traditional 54M adapter and 150M network card, it owns higher baud rate, so data transmission has become more efficient. In addition, it reduces delay of the wireless network and makes voice, video, online-game and VOD play smoothly.

Product Specifications

Item	Description
Standards	IEEE 802.11n, IEEE 802.11g, IEEE 802.11b
Interface	USB1.1 USB2.0
Frequency Range	2.4-2.4835GHz
Working channel	13
Modulation Type	OFDM/CCK/16-QAM/64-QAM
Receiver Sensitivity (without Standard antenna)	270M: -74dBm@10% PER 130M: -74dBm@10% PER 108M: -74dBm@10% PER 54M: -74dBm@10% PER 11M: -85dBm@8% PER 6M: -88dBm@10% PER 1M: -95dBm@8% PER
Work Mode	Ad-Hoc, Infrastructure
Spread Spectrum Technology	MIFO OFDM(Keep fluent)
Wireless Transmit Power	18dBm(MAX EIRP)
LED	State warning lamp
Transmission distance	Indoor up to 100m, Outdoor up to 300m.
Support Operating System	Windows 2000/XP/Vista/Win7
Operating Temperature	Operating Temperature: 0°C~40°C(32°F~104°F) Storage Temperature: -40°C~70°C(-40°F~158°F) Relative Humidity: 10%~90%, non condensation Storage Humidity: 5%~95% non condensation
Operating Voltage	DC 5V ± 0.2V
Dimensions (L*W*H)	37*20*7.5mm

Product Features

- ◎ Employ 11n technology, wireless transmission rate up to 300Mbps
- ◎ MIMO software architecture, and built-in two directive antennas, signal is sent and received by complex Transmission, which providing better performance and stability
- ◎ Support WPS One-Touch encryption, users can quickly and easily setup wireless security
- ◎ Support 20 MHz and 40 MHz of bandwidth
- ◎ Support PSP XLink online game (Windows XP system)
- ◎ Detect network and transmission rate automatically
- ◎ Supports 64/128-bit WEP encryptions, as well as WPA/WPA2 and WPA-PSK/WPA2-PSK encryptions
- ◎ Support WMM, voice and video play smoothly
- ◎ Simple setup and configuration, plug and play, it is efficient and convenient

Mode1: Ad-Hoc

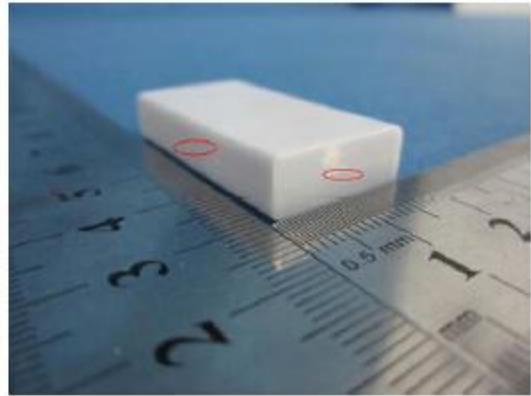
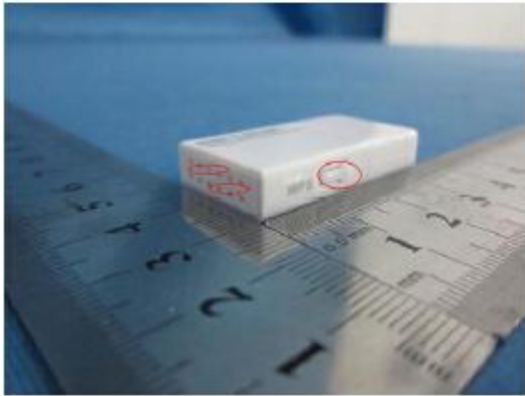
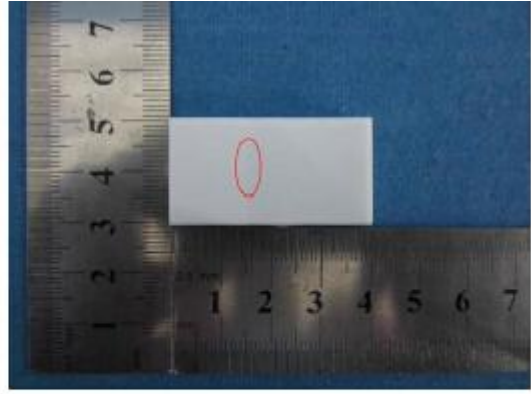
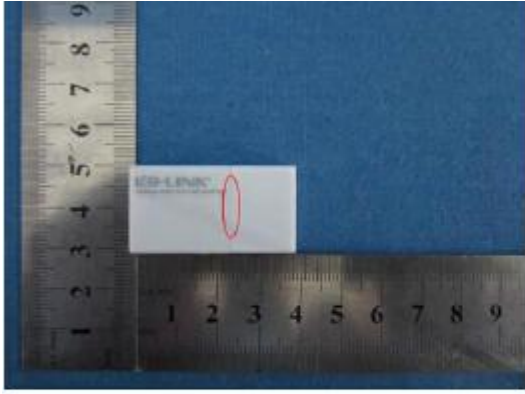


Mode2: Infrastructure



Giftbox Size: 15*11*2cm

Carton Size: 55*32*25cm



X-ON Electronics

Largest Supplier of Electrical and Electronic Components

Click to view similar products for [WiFi Modules - 802.11](#) category:

Click to view products by [Aaeon](#) manufacturer:

Other Similar products are found below :

[KBPC10/15/2506WP](#) [SX-PCEAN2C-SP](#) [849WM520100E](#) [WIFI-AT2350](#) [7265.NGWG.SW](#) [HDG204-DN-3](#) [FXX-3061-MIX](#) [EMIO-1533-00A2](#) [7265.NGWWB.W](#) [PPC-WL-KIT02-R11](#) [RC-CC2640-B](#) [E70-433T14S](#) [WH-NB73-BA](#) [NF-02-PA](#) [EAR00364](#) [3168.NGWG](#) [MY-WF003U](#) [AX210.NGWG.NV](#) [ESP-15F32Mbit](#) [ESP32-S32Mb](#) [TG-01M](#) [ESP-13](#) [ESP-01F-2M](#) [ESP-01E-2M](#) [ESP-20](#) [ESP32-SL](#) [ESP-12K-PSRAM](#) [ESP-12K-PSRAM-IPEX](#) [ESP-12H](#) [BW18](#) [BW12-16Mb](#) [BW14](#) [BW15](#) [BW16](#) [TG-12F](#) [SIM7600CE-L1S](#) [CB3S\(tjrl\)](#) [CB3S\(hvk9\)](#) [CB3S\(qh6\)](#) [WB2S\(csyd\)](#) [WB3S\(ppty\)](#) [WB3S\(h238\)](#) [WB3S\(uvmz\)](#) [1005869](#) [1012](#) [QCA4004X-BL3B](#) [32-2006-BU](#) [WT51822-S4AT](#) [WT8266-S2](#) [DWM1000](#)