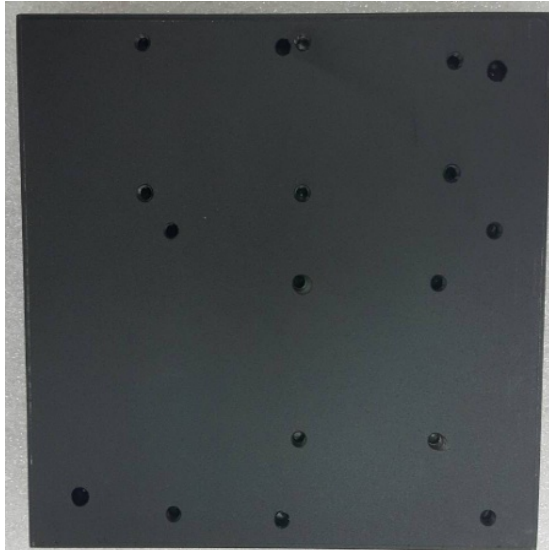


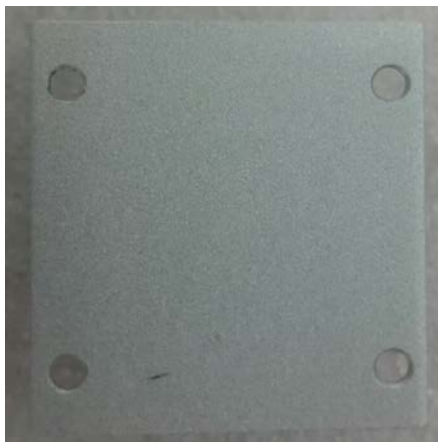
UP Chassis assembly SOP

Date: 24-01-2017

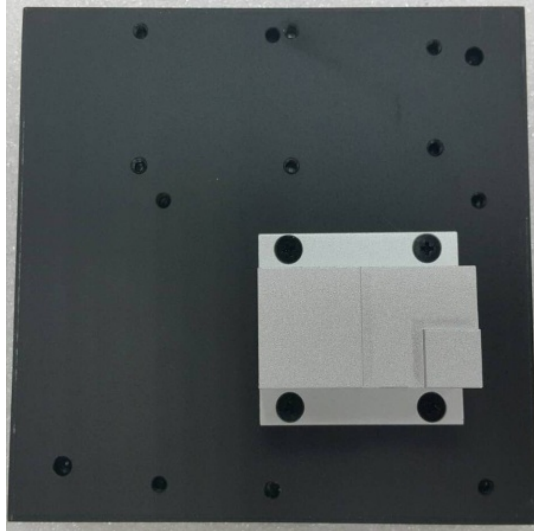
1. Place the top cover upside down on table



2. Take out AL block sink and 4 pcs black M2.5 4mm screw



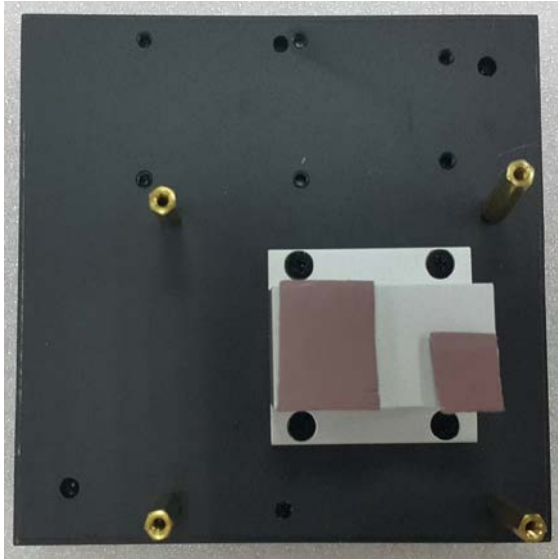
3. Screw the AL block sink to the top cover as below location



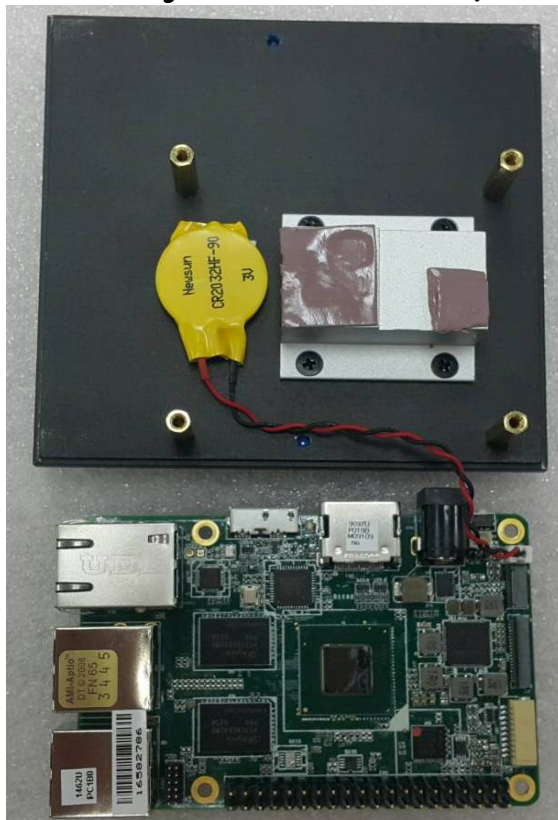
4. Take out 4 pcs M2.5 stand off



5. Screw the stand off as below location on the top cover



6. Place the RTC battery as below location on top cover, make sure UP board removed original heat sink and heat spreader for assembly



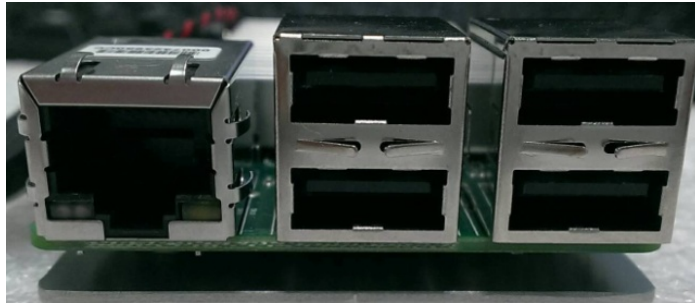
7. Take out 4 pcs M2.5 3.5mm stand off



8. Place UP board upside down and screw the 4 pcs stand off as below location



9. Assemble the top cover with UP board with bottom chassis, make sure USB ports align first



10. Align DC power Jack and make sure all ports are aligned.



11. Take out 4 pcs M2.5 4mm black screws



12. Screw on the 4 pcs M2.5 black screw on the bottom chassis to complete assembly



X-ON Electronics

Largest Supplier of Electrical and Electronic Components

Click to view similar products for [Modules Accessories](#) category:

Click to view products by [Aaeon](#) manufacturer:

Other Similar products are found below :

[7010-0001](#) [AX98219](#) [A1UL8RISER](#) [F1UJPMICRISER](#) [FHW1U16RISER](#) [20-101-0440](#) [MBCDROM](#) [AX61221TM](#) [VM-105](#) [EA](#)
[CARREDIPTFT02](#) [RK-210E-B](#) [E226171106](#) [88606200030E](#) [SI-HDMI-EDID-EM](#) [MIC-75M13-00A1E](#) [FPM-1000T-SMKE](#) [AMK-R004E](#)
[96FMCF-ST2ADAPTER1](#) [AHWKPTP12GBGB](#) [AXXSTCPUCAR](#) [FPK-07-R10](#) [Mini Din 6P to 6P HARNESS](#) [FPF1320 POWER](#)
[MULTIPLEXER CARRIER](#) [881261510A0E](#) [AXXP3SWX08080](#) [conga-B7XD/CSP-Cu-B](#) [881281021A0E](#) [HFT for mounting KIT](#)
[FN928X_FN929X](#) [BB-MH112-1A](#) [15100600](#) [9-5000-1116](#) [BKCMCR1ABB](#) [70763](#) [98R3612003E](#) [881261910A0E](#) [106897](#) [48222R](#) [4D](#)
[ARDUINO ADAPTOR SHIELD II](#) [20926110901](#) [PYCASE GREEN](#) [PYCASE BLUE](#) [FP15072_ZORYA-SC-HEKLA](#) [20952000004](#)
[20953000007](#) [DP-DVI-R10](#) [575-BBIS](#) [RACK-220GW/A130B](#) [492-BBKM](#) [IP411](#) [70760](#)