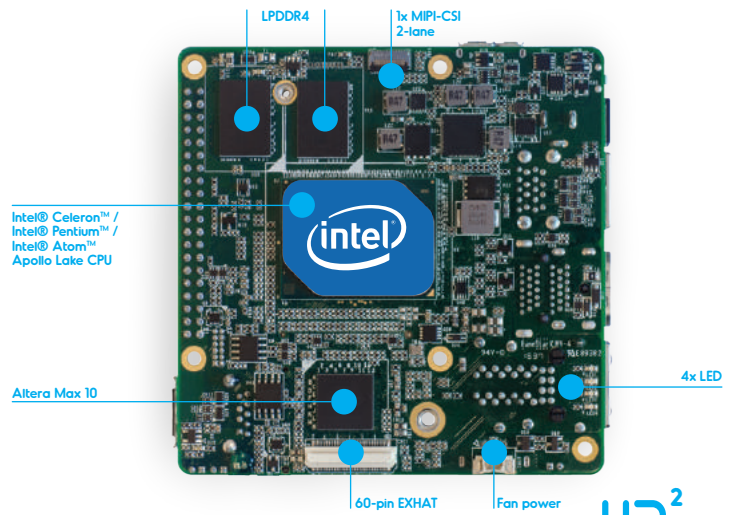
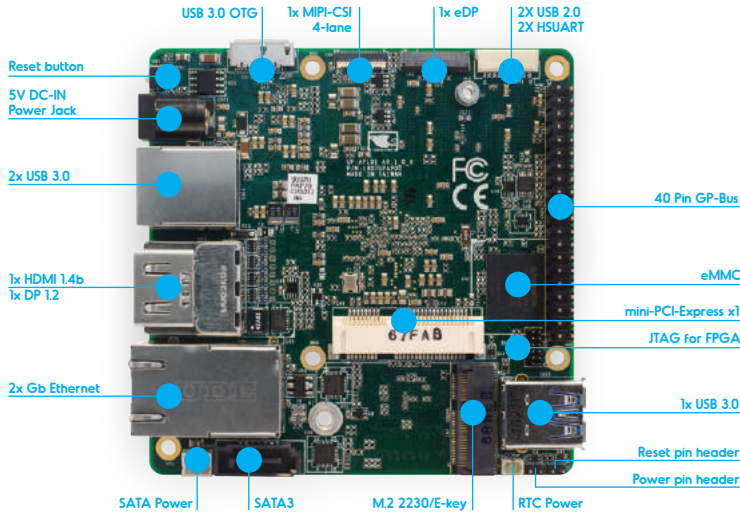


The World's Fastest x86 Maker Board



UP² (UP Squared) is world's fastest maker board with the high performance and low power consumption features of Intel® Celeron™, Pentium™ and Atom™ Processors (codename Apollo Lake).

The internal GPU is the new Intel Gen 9 HD with 12 / 18 Execution Units, supporting 4K Codec Decode and Encode for HEVC⁴, H.264 and VP8. Thanks to the Vector Units Image Processing Unit and Precision Timing Management to synchronize CPU with I/O, improved determinism (cache QoS, Intel Virtualization Technology), all the graphic processing is effortless to UP² (UP Squared).

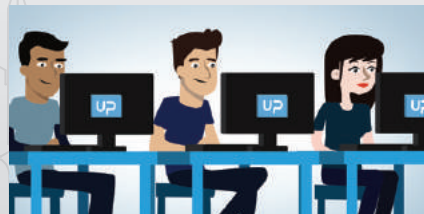
UP² (UP Squared) comes with 2GB/4GB/8GB LPDDR4 and 32GB/64GB/128GB eMMC. A 40-pin GP-bus provides the freedom for makers to build up their module. Additionally, there is a 60-pin EXHAT for embedded applications. This allows for the exploration of more possibilities. The expansion capabilities of UP² (UP Squared) goes much further than this. Native mini-PCI-e, M.2 2230 and SATA3 are all built in on the board. What more could one desire?

The board supports Windows 10, Windows IoT Core, Ubinlinux, Ubuntu, Yocto and Android Marshmallow. It's really UP to you to decide which operating system is best for your application. Now, all you need is an UP² (UP Squared) to begin your project!

- Applications -



Drones



Education



Robotics



Media Center

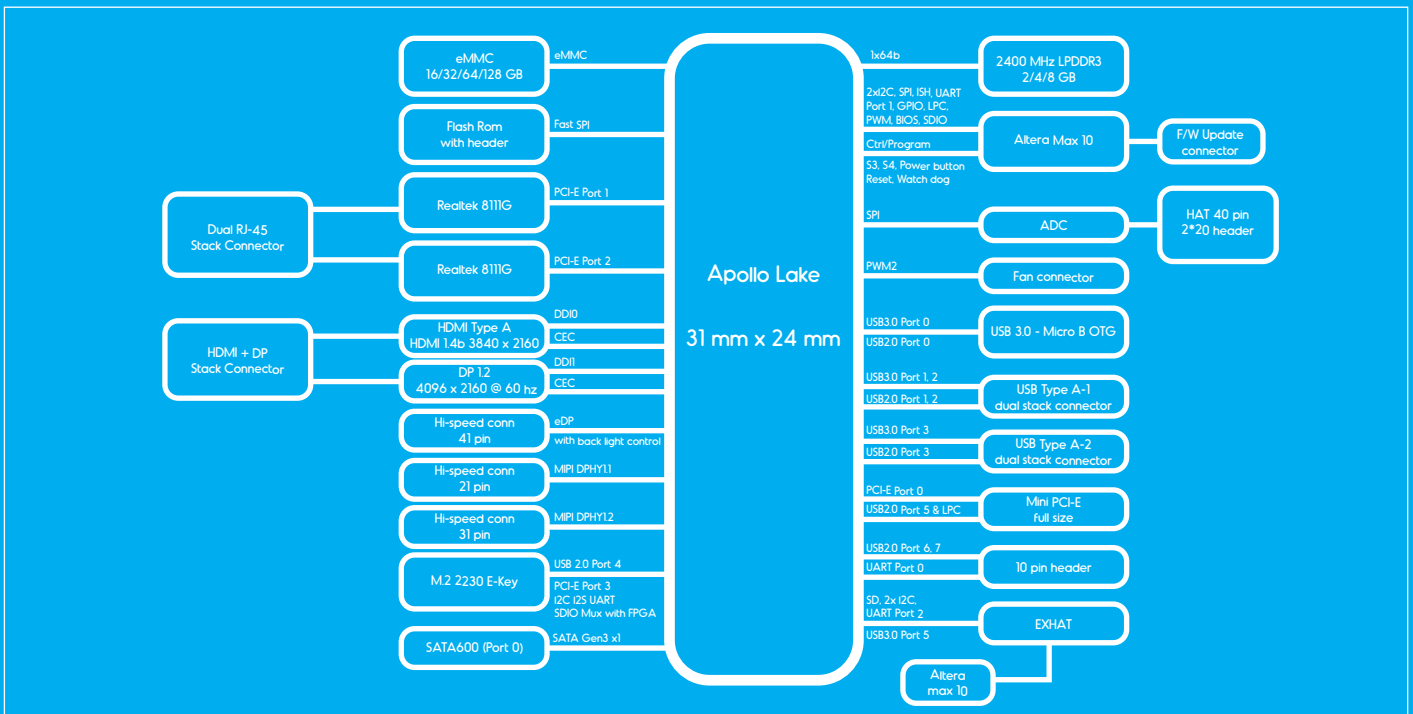


Internet of Things



Home Automation

 	<p>SOC Intel® Celeron™ N3350 (up to 2.4 GHz) Intel® Pentium™ N4200 (up to 2.5 GHz) Intel® Atom™ E3940 (up to 1.8GHz)</p> <p>Graphics Intel® Gen 9 HD, supporting 4K Codec Decode and Encode for HEVC4, H.264, VP8</p> <p>Video & Audio HDMI 1.4b x1 4K @ 30 hz + DP 1.2 1x 4K @ 60 hz I2S audio port</p> <p>Camera interface CSI 2-lane + CSI 4-lane</p> <p>Display interface eDP</p> <p>Power 5V DC-in @ 4A-6A</p> <p>Operating humidity 10%~80%RH non-condensing</p> <p>Operating Temperature 32-140°F / 0~60°C</p> <p>Altera MAX 10 FPGA 2KLE --Celeron/ Pentium 4KLE -- ATOM</p>	 	<p>Memory 2GB (single channel) LPDDR4 4GB/8GB (dual channel) LPDDR4)</p> <p>Storage Capacity 32 GB / 64 GB / 128 GB eMMC</p> <p>USB 3x UB3.0 (Type A) + 1x USB 3.0 OTG (Micro B) 2x USB2.0+2 X UART (Tx/Rx) debug port (pin header)</p> <p>Ethernet 2x Gb Ethernet (full speed) RJ-45</p> <p>RTC Yes</p> <p>Expansion 40 pin General Purpose bus 60 pin EXHAT 1xmini-PCIe , M.2 2230, SATA3</p> <p>Compatible Operating system Microsoft Windows 10 (full), Windows IOT Core, Linux (ubilinux, Ubuntu, Yocto), Android Marshmallow</p> <p>Dimensions 3.37" x 3.54" / 85.60 mm x 90 mm</p> <p>Certificate CE/FCC Class A, RoHS complaint, REACH</p>
----------------------------------	---	--	--



UP - Pinout

2	4	6	8	10	12	14	16	18	20	22	24	26	28	30	32	34	36	38	40
1	3	5	7	9	11	13	15	17	19	21	23	25	27	29	31	33	35	37	39
1	2	3	4	5	6	7	8	9	10	11	12	13	14	15	16	17	18	19	20
21	22	23	24	25	26	27	28	29	30	31	32	33	34	35	36	37	38	39	40

1	2	3	4	5
6	7	8	9	10
11	12	13	14	15
16	17	18	19	20
21	22	23	24	25
26	27	28	29	30
31	32	33	34	35
36	37	38	39	40

1	2	3	4	5
6	7	8	9	10
11	12	13	14	15
16	17	18	19	20
21	22	23	24	25
26	27	28	29	30
31	32	33	34	35
36	37	38	39	40

* 2nd SPI and ADC will be available only with E3940 SoC

Part number :	Intel® Celeron™ N3350 - 2 GB + 32 GB eMMC	UPS-APLP4-A20-0864	Intel® Pentium™ N4200 - 8 GB + 64 GB eMMC
	UPS-APLC2-A20-0232		
	UPS-APLC2-A20-0432		
	UPS-APLP4-A20-0432		

X-ON Electronics

Largest Supplier of Electrical and Electronic Components

Click to view similar products for [Single Board Computers](#) category:

Click to view products by [Aaeon](#) manufacturer:

Other Similar products are found below :

[MANO882VPGGA-H81](#) [SSD3200W-S-SLC-INN 20-101-0738](#) [MVME61006E-2173R](#) [SHB230DGGGA-RC](#) [IMB210VGGA](#) [IB915F-3955](#)
[MI958F-16C](#) [S2600WFT](#) [S2600STB](#) [BBS2600BPS](#) [BLKNUC7I3DNHNC1978015](#) [DEV-17745](#) [BEAGLEBOARD POCKET](#) [MICROSOM](#)
[I2 + WIFI/BT](#) [HUMMINGBOARD-I2EX](#) [BASE + WIFI/BT](#) [HUMMINGBOARD-I4 PRO + WIFI/BT](#) [VAB-600-B](#) [RT5350F-OLINUXINO-](#)
[EVB](#) [MITX-440-DVI-2E](#) [ATCA-7365-D-24GB](#) [NITX-315-DEVKIT](#) [A13-SOM-512](#) [NITX-315](#) [BANANA PI BPI-M1+](#) [A13-SOM-WIFI-](#)
[4GB](#) [AM3359-SOM-EVB-IND](#) [UPS-APLC2-A10-0432](#) [DFR0419](#) [UPS-APLP4-A10-0864](#) [UPS-APLP4-A10-0432](#) [UPS-APLP4-A10-08128](#)
[MI977F-Q27](#) [BBBLUE](#) [IB811F-I30](#) [DFR0470-ENT](#) [Nit6Q_i](#) [M2M \(TELIT\)](#) [RELAY](#) [PROFESSIONAL](#) [GCS22.2.080.2.2.I](#)
[GCS22.8.100.4.2.I](#) [GLS11.2.053.2.2.E](#) [A20-OLINUXINO-LIME-E16GS16M](#) [A20-OLINUXINO-LIME-S16M](#) [A20-OLINUXINO-LIME2-](#)
[E16GS16M](#) [A20-OLINUXINO-MICRO-E16GS16M](#) [A20-OLINUXINO-MICRO-S16M](#) [BANANA PI BPI-W2](#) [T2-OLINUXINO-LIME2-](#)
[S16M-IND](#)