



HI-CONTACT™ LIQUID COLD PLATE

Aavid Hi-Contact™ tube liquid cold plates feature a high performance assembly utilizing a continuous tube press fit into an extruded aluminum plate. The patented geometry used in the Aavid Hi-Contact™ process moves the fluid closer to the device generating heat, achieving the best thermal performance from a tube cold plate.

To further increase the performance of Aavid's Hi-Contact™ liquid cold plates, a thermal epoxy is applied to the joint to provide a gap free thermal interface between the tube and the plate.

AVAILABLE OPTIONS

- *Tube Material: Stainless Steel, Cupronickel*
- *Finishes: AavSHIELD, AavSHIELD³*

PART NUMBERS

416401U00000G – Unfinished



FEATURES & BENEFITS:

- Cost Effective
- High Performance Leak Free Joints
- Hi-Contact™ for Better Heat Transfer

HI-CONTACT™ PRODUCT SPECIFICATIONS

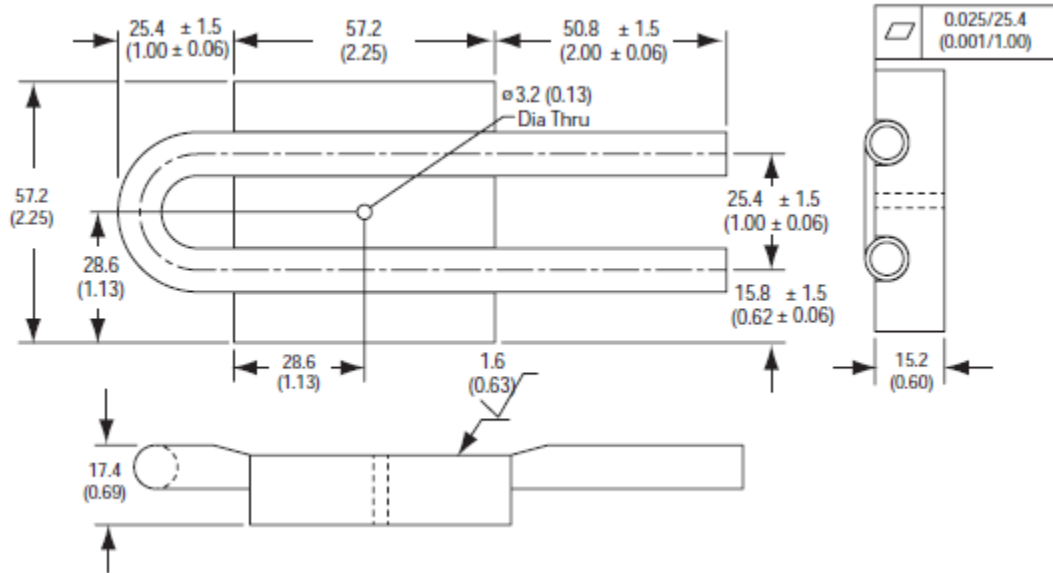
<i>Property</i>	<i>Details</i>
<i>Plate Details</i>	Extruded Aluminum
<i>Tube Material</i>	Copper 9.5mm O.D. x 1.24mm wall
<i>Standard Finish</i>	Unfinished
<i>Epoxy</i>	Aluminum Filled - High Thermal Conductivity

<i>Measurement</i>	<i>mm</i>	<i>in</i>
Length	57.15	2.25
Width	57.15	2.25
Thickness	15.24	0.60

MECHANICAL

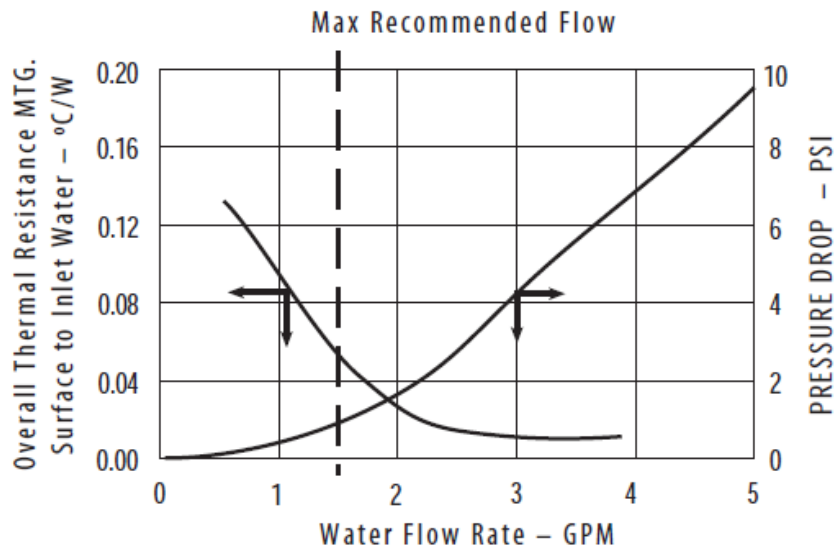
Dimensions are shown in mm

Figure 1



PERFORMANCE – 2 PASS

Figure 2



Aavid reserves the right to make changes to the products or information contained herein without notice. No liability is assumed as a result of their use or applications. For additional information, please contact Aavid directly.

X-ON Electronics

Largest Supplier of Electrical and Electronic Components

Click to view similar products for [Heat Sinks](#) category:

Click to view products by [Aavid](#) manufacturer:

Other Similar products are found below :

[581102B00000G](#) [656-15ABPE](#) [657-20ABPNE](#) [7020B-TC12-MTG](#) [73452PPBA](#) [7G0011A](#) [PF720G](#) [A22-4026](#) [HAH10L](#) [1542616-1](#) [HS-2506-F1](#) [HS-87M0-F2](#) [218-40CTE3](#) [231-69PAB-15V](#) [25-7520](#) [SW50-4G](#) [231-75PAB-13V](#) [231-75PAB-15V](#) [253-122ABE-22](#) [PSC22CB](#) [CLP212SG](#) [CLP-7701G](#) [HAA083](#) [HAF10L](#) [HAQ10T](#) [D10100-28](#) [TO5-002D](#) [BDN183CBA01](#) [3-21053-4](#) [32438](#) [TX0506-1B](#) [TX1806B](#) [LAE66A3CB](#) [WA-DT2-101E](#) [511-3U](#) [73381PPBA](#) [73403PPBA](#) [7G0047C](#) [COMX-440-HSP](#) [510-12M](#) [D10650-40T5](#) [V8511 Y](#) [APF40-40-13CB/A01](#) [780653U04500G](#) [ATS-54310K-C2-R0](#) [FK 216 CB SA](#) [FK 231 SA 220](#) [648-51AB](#) [657-20ABPESC](#) [2341BG](#)