



Tel (toll-free): +1-855-32-AAVID

Home

Products

Solutions

Design

Tech Tools & Docs

Contact

Our Company

News & Events

[Accessories](#)

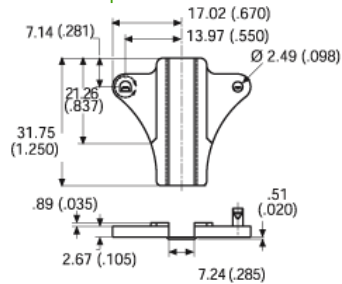
Card Ejectors

Snap-on Ejectors / Pullers

- Saves time - no roll pin required
- Excellent for retrofit applications
- Material is nylon per ASTM D4066-82PA162F11
- Cost no more than conventional ejector/puller
- Rated at 222.5N (50 lbs.) / ejector force per pair
- One piece - no assembly required
- May be heat stamped

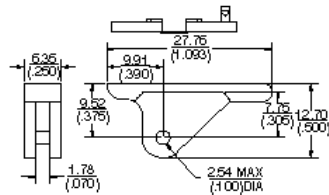
Part Number: 5021N

RoHS Compliant



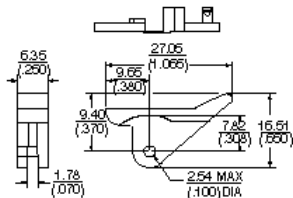
Part Number: 5022N

RoHS Compliant



Part Number: 5023N

RoHS Compliant

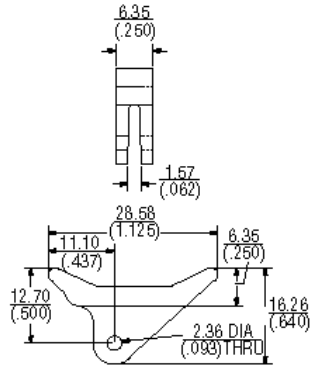


Standard Ejectors/Pullers

- Lever action releases card from its connector safely and quickly
- Cards, their components and connectors are less frequently damaged when extracting PC boards

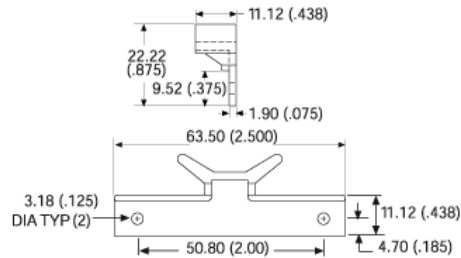
- No special extraction tools are needed for board removal
- Material is nylon per ASTM D4066-82 PA 120B4413F24, UL 94 V-O rated 9natural color)
- Roll pins are provided (NAS 561-P3-4)

5003N Slim Face/Grip



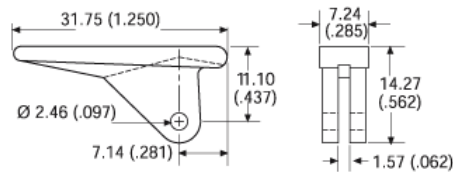
5005-09NG Puller (roll pins not provided)

RoHS **Compliant** Product Change Notice

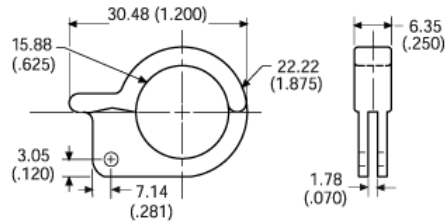


5005-08NG Puller

RoHS **Compliant** Product Change Notice



5005-25N Combination Ejector/Puller



[Contact](#)

[Disclaimer](#)

[Locations](#)

[Customer Survey](#)

Tel (toll-free): +1-855-32-AAVID

Fax: +1-603-223-1738

Email: info@aavid.com

Aavid will lead the electronics thermal management industry worldwide. We will be the first company customers call to enable their thermal designs anywhere in the world. We will respond with extraordinary speed and will provide them with timely and cost-effective solutions because we understand their needs, their industry, and their culture.

2011 Aavid Thermalloy, LLC

X-ON Electronics

Largest Supplier of Electrical and Electronic Components

Click to view similar products for [Heat Sinks](#) category:

Click to view products by [Aavid](#) manufacturer:

Other Similar products are found below :

[657-20ABPNE](#) [73452PPBA](#) [A22-4026](#) [120-1873-007](#) [218-40CTE3](#) [231-69PAB-15V](#) [231-75PAB-13V](#) [231-75PAB-15V](#) [253-122ABE-22](#)
[PSC22CB](#) [295-2](#) [CLP212SG](#) [D10100-28](#) [BDN183CBA01](#) [3-21053-4](#) [TX0506-1B](#) [LAE66A3CB](#) [511-3U](#) [73381PPBA](#) [73403PPBA](#) [8191-](#)
[E40](#) [510-12M](#) [529802B00000](#) [D10650-40T5](#) [6225B-MT6G](#) [ATS-54310K-C2-R0](#) [648-51AB](#) [657-20ABPESC](#) [679-25AG](#) [FK 212 CB SA](#)
[FK225 SA L1](#) [241404B91203G](#) [6801G](#) [680-5K](#) [7106DG/TR](#) [SK145 37 5STSTO220](#) [7109DG/TR](#) [TS-11042-CY](#) [S14K35G3S5](#) [8924G](#)
[7717-133DAP](#) [7717-26DAP](#) [4509](#) [SW25-4G](#) [CLP-215](#) [CLP-207](#) [D20850-40-T2](#) [APF30-30-10CB/A01](#) [V8508E](#) [268-85CTE](#)