



BOARD LEVEL COOLING – Extruded 5290

Extruded 5290 is a series of dual radial board level heat sinks designed to cool TO-218, TO-220, and TO-247 devices. Representative image only.

ORDERING INFORMATION

Part Number	Device Type
529701B02100G	TO-218, TO-247
529701B02500G	TO-218
529702B02500G	TO-220
529801B02500G	TO-218
529802B02500G	TO-220
529901B02100G	TO-218
529901B02500G	TO-218
529902B02100G	TO-220
529902B02500G	TO-220
530001B02100G	TO-218
530001B02500G	TO-218
530002B00000G	TO-220
530002B02500G	TO-220



HEAT SINK DETAILS

Property	Details
Material	Aluminum
Finishing	Black Anodize
Device Attachment Options	Requires Mounting Kit
Thermal Interface Material	-

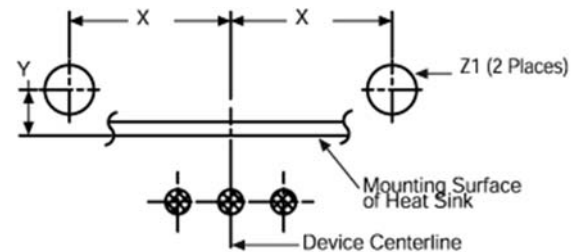
Property	Details
Heat Sink Width (mm)	41.91
Heat Sink Length (mm)	25.40
Heat Sink Height (mm)	See "A" Dim below
Heat Sink Mounting Direction	Vertical

MECHANICAL & PERFORMANCE

Drawing dimensions are shown in mm, (in)

Part Number	"A" Dim	"B" Dim	"C" Dim
529701B02100G	25.40	-	-
529701B02500G	25.40	21.59	3.66
529702B02500G	25.40	18.29	3.17
529801B02500G	38.10	21.59	3.66
529802B02500G	38.10	18.29	3.17
529901B02100G	50.80	-	-
529901B02500G	50.80	21.59	3.66
529902B02100G	50.80	18.29	3.18
529902B02500G	50.80	18.29	3.17
530001B02100G	63.50	-	-
530001B02500G	63.50	21.59	3.66
530002B00000G	63.50	-	-
530002B02500G	63.50	18.29	3.17

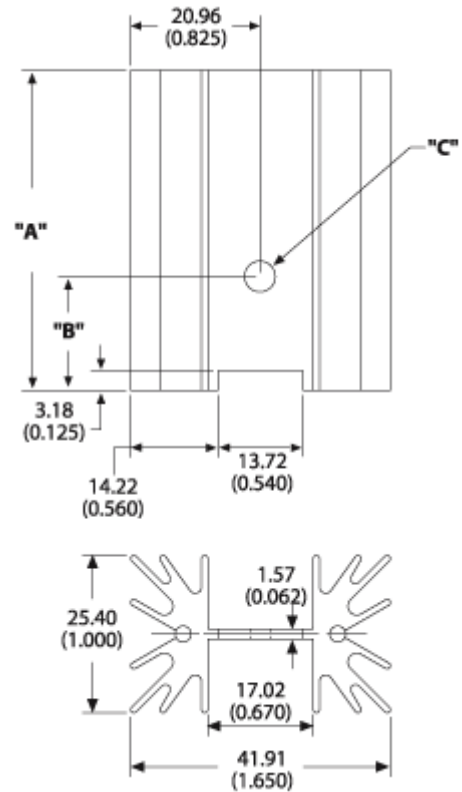
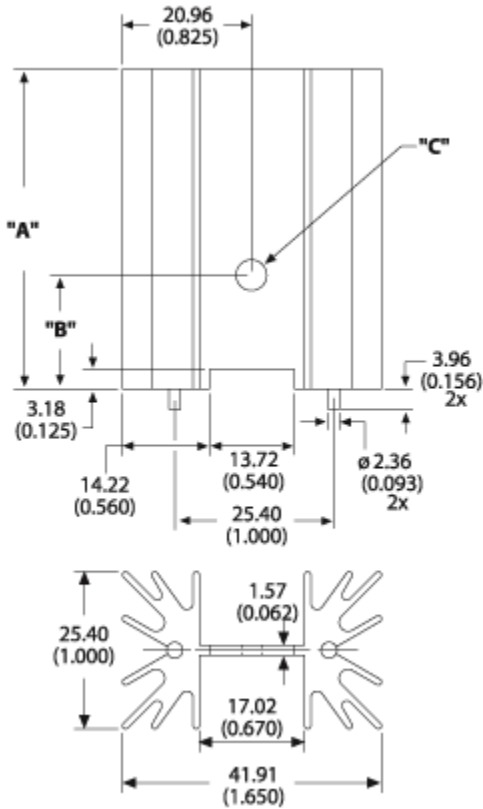
Property	Details
"X" Dim	12.70 (0.500)
"Y" Dim	0.79 (0.031)
"Z" Dim	2.67 (0.105)



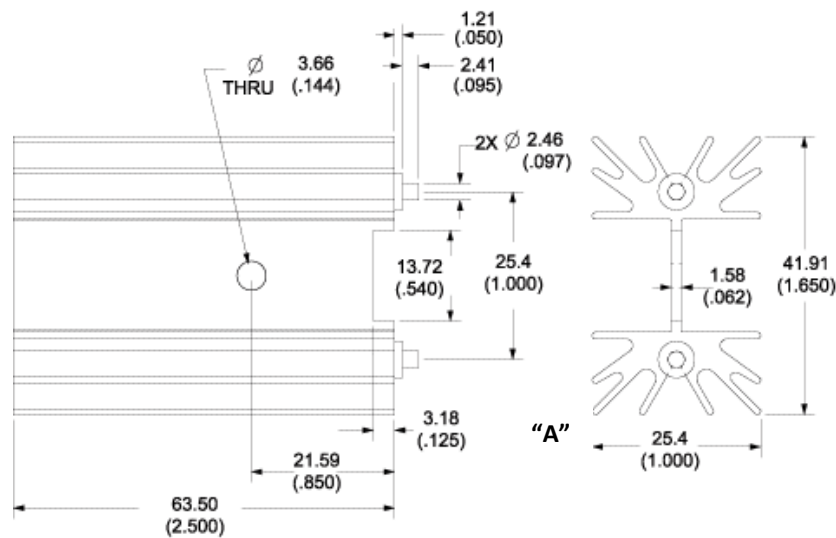
Board Level Cooling – Extruded 5290

Part Number: 529701B02500G, 529702B02500G,
529801B02500G, 529802B02500G, 529901B02500G,
529902B02500G, 530001B02500G, 530002B02500G

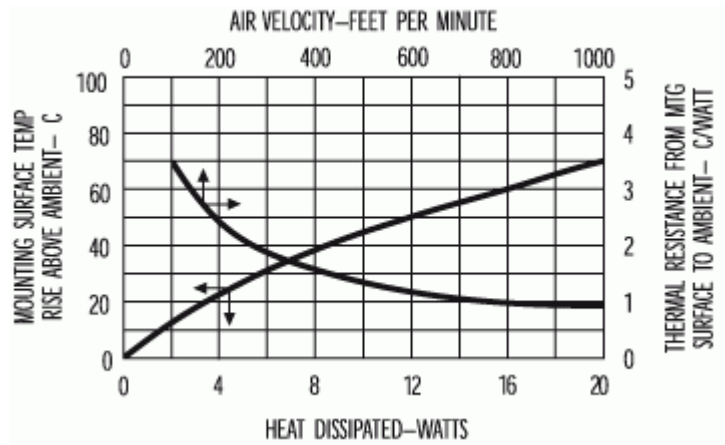
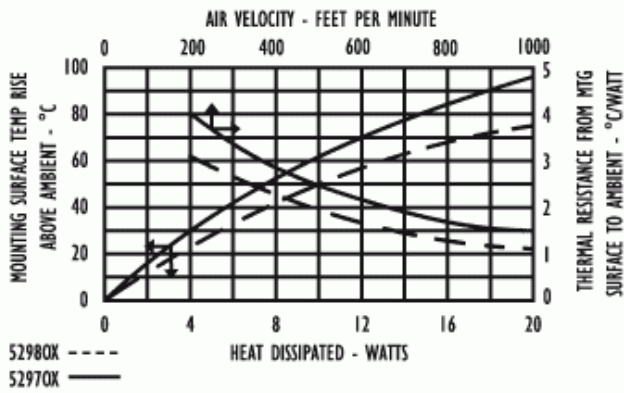
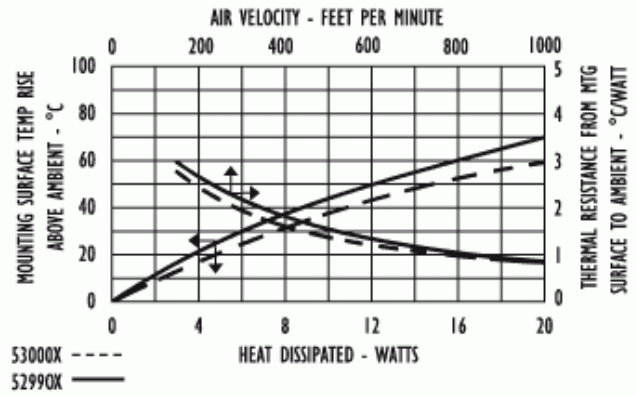
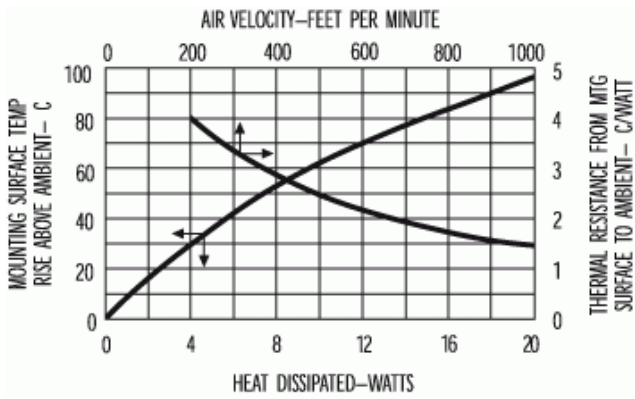
Part Number: 530002B00000G



Part Number: 529701B02100G, 529901B02100G,
529902B02100G, 530001B02100G



Board Level Cooling – Extruded 5290



X-ON Electronics

Largest Supplier of Electrical and Electronic Components

Click to view similar products for [Heat Sinks](#) category:

Click to view products by [Aavid](#) manufacturer:

Other Similar products are found below :

[581102B00000G](#) [656-15ABPE](#) [657-20ABPNE](#) [7020B-TC12-MTG](#) [73452PPBA](#) [7G0011A](#) [PF720G](#) [A22-4026](#) [HAH10L](#) [1542616-1](#) [HS-2506-F1](#) [HS-87M0-F2](#) [218-40CTE3](#) [231-69PAB-15V](#) [25-7520](#) [SW50-4G](#) [231-75PAB-13V](#) [231-75PAB-15V](#) [253-122ABE-22](#) [PSC22CB](#) [CLP212SG](#) [CLP-7701G](#) [HAA083](#) [HAF10L](#) [HAQ10T](#) [D10100-28](#) [TO5-002D](#) [BDN183CBA01](#) [3-21053-4](#) [32438](#) [TX0506-1B](#) [TX1806B](#) [LAE66A3CB](#) [WA-DT2-101E](#) [511-3U](#) [73381PPBA](#) [73403PPBA](#) [7G0047C](#) [COMX-440-HSP](#) [510-12M](#) [D10650-40T5](#) [V8511 Y](#) [APF40-40-13CB/A01](#) [780653U04500G](#) [ATS-54310K-C2-R0](#) [FK 216 CB SA](#) [FK 231 SA 220](#) [648-51AB](#) [657-20ABPESC](#) [2341BG](#)