



## BOARD LEVEL COOLING – High Rise 5301

High Rise 5301 is a series of narrow high rise channel board level heat sinks, featuring twisted fins and wave on mounts, designed to cool TO-218, TO-220, and TO-247 devices. Representative image only.

## ORDERING INFORMATION

Part Number	Device Type
530101B00100G	TO-218, TO-247
530101B00150G	TO-218, TO-247
530102B00100G	TO-220
530102B00150G	TO-220
530122B00162G	TO-220
530161B00162G	TO-218, TO-247
530162B00162G	TO-220



## HEAT SINK DETAILS

Property	Details
Material	Aluminum
Finish	Black Anodize
Device Attachment Options	Clip Attachment (See Below)
Thermal Interface Material	-
Heat Sink Mounting Direction	Vertical

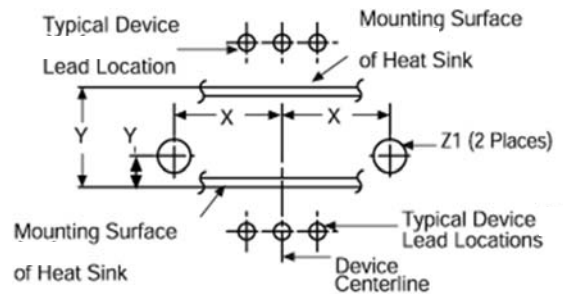
Property	Details
Heat Sink Width (mm)	44.45
Heat Sink Length (mm)	12.45
Heat Sink Height (mm)	44.45
"X" Dim	12.07
"Y" Dim	6.35
"YT" Dim	12.70
"Z" Dim	4.75

## MECHANICAL & PERFORMANCE

Drawing dimensions are shown in mm, (in)

Part Number	"A" Dim	Clip Attachment
530101B00100G	21.80	-
530101B00150G	21.80	Kool Clip Code 50
530102B00100G	18.29	-
530102B00150G	18.29	Kool Clip Code 50
530122B00162G	18.29	Kool Clip Code 62
530161B00162G	21.80	Kool Clip Code 62
530162B00162G	18.29	Kool Clip Code 62

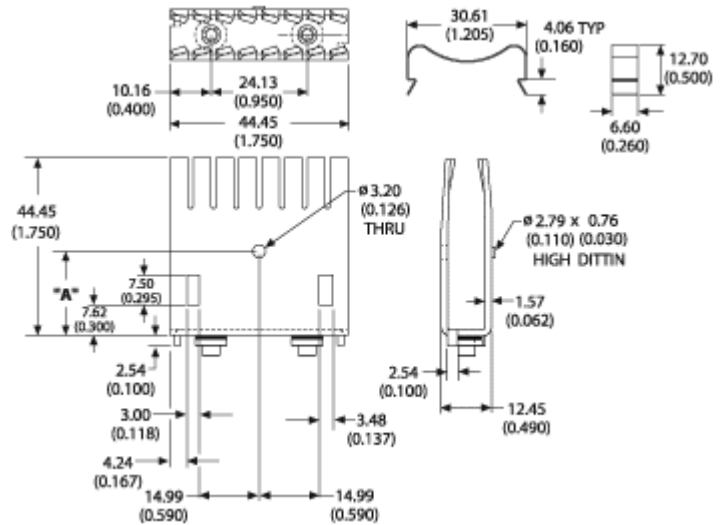
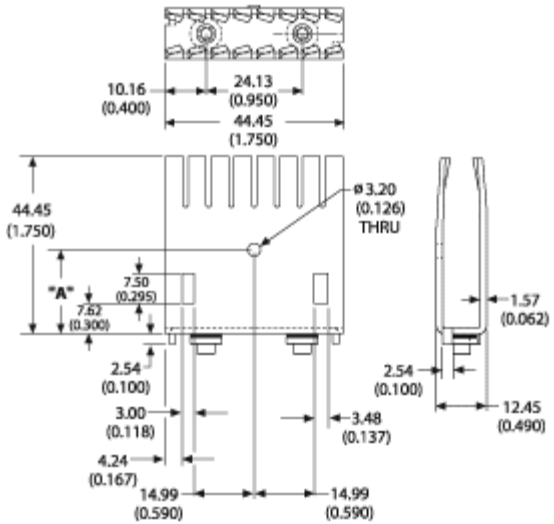
Mounting Details:



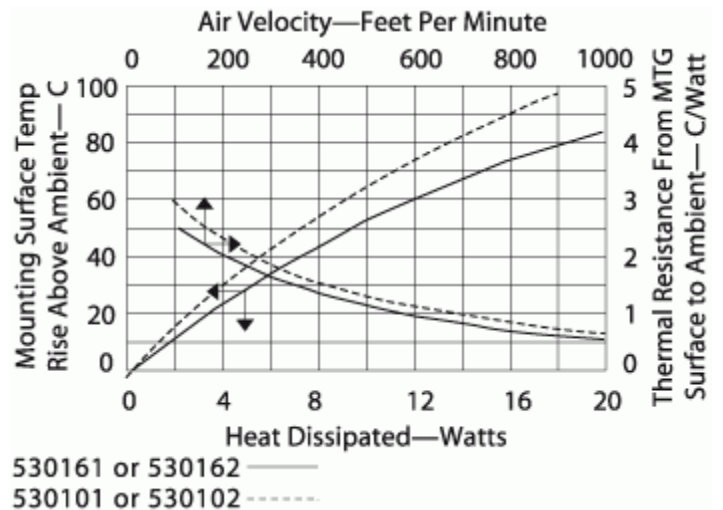
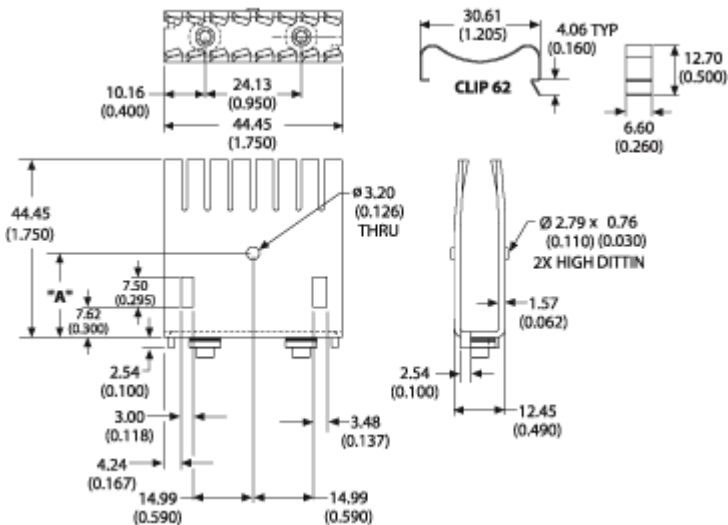
# Board Level Cooling – High Rise 5301

Part Numbers: 530101B00100G, 530102B00100G

Part Numbers: 530101B00150G, 530102B00150G



Part Numbers: 530122B00162G, 530161B00162G,  
530162B00162G



## X-ON Electronics

Largest Supplier of Electrical and Electronic Components

*Click to view similar products for [Heat Sinks](#) category:*

*Click to view products by [Aavid](#) manufacturer:*

Other Similar products are found below :

[581102B00000G](#) [656-15ABPE](#) [657-20ABPNE](#) [7020B-TC12-MTG](#) [73452PPBA](#) [7G0011A](#) [PF720G](#) [A22-4026](#) [HAH10L](#) [1542616-1](#) [HS-2506-F1](#) [HS-87M0-F2](#) [218-40CTE3](#) [231-69PAB-15V](#) [25-7520](#) [SW50-4G](#) [231-75PAB-13V](#) [231-75PAB-15V](#) [253-122ABE-22](#) [PSC22CB](#) [CLP212SG](#) [CLP-7701G](#) [HAA083](#) [HAF10L](#) [HAQ10T](#) [D10100-28](#) [TO5-002D](#) [BDN183CBA01](#) [3-21053-4](#) [32438](#) [TX0506-1B](#) [TX1806B](#) [LAE66A3CB](#) [WA-DT2-101E](#) [511-3U](#) [73381PPBA](#) [73403PPBA](#) [7G0047C](#) [COMX-440-HSP](#) [510-12M](#) [D10650-40T5](#) [V8511 Y](#) [APF40-40-13CB/A01](#) [780653U04500G](#) [ATS-54310K-C2-R0](#) [FK 216 CB SA](#) [FK 231 SA 220](#) [648-51AB](#) [657-20ABPESC](#) [2341BG](#)