

# Board Level Cooling – Channel 5750



## BOARD LEVEL COOLING - Channel 5750

Channel 5750 is a series of channel board level heat sinks designed to cool TO-220 and TO-220-single gauge devices. Representative image only.

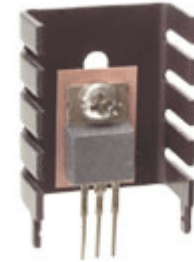
## ORDERING INFORMATION

Part Number	Device Type
575002B00000G	TO-220, TO-220-single gauge
575002D00000G	TO-220, TO-220-single gauge
575002T00000G	TO-220, TO-220-single gauge

## HEAT SINK DETAILS

Property	Details
Material	Aluminum
Finish	See Table Below
Device Attachment Options	Requires Mounting Kit
Thermal Interface Material	-

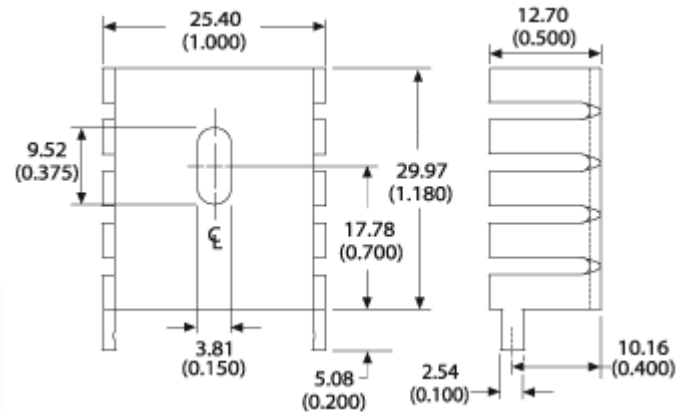
Property	Details
Heat Sink Width (mm)	25.4
Heat Sink Length (mm)	12.7
Heat Sink Height (mm)	29.97
Heat Sink Mounting Direction	Vertical
"X" Dim (mm)	12.07
"Y" Dim (mm)	8.89
"Z" Dim (mm)	3.10



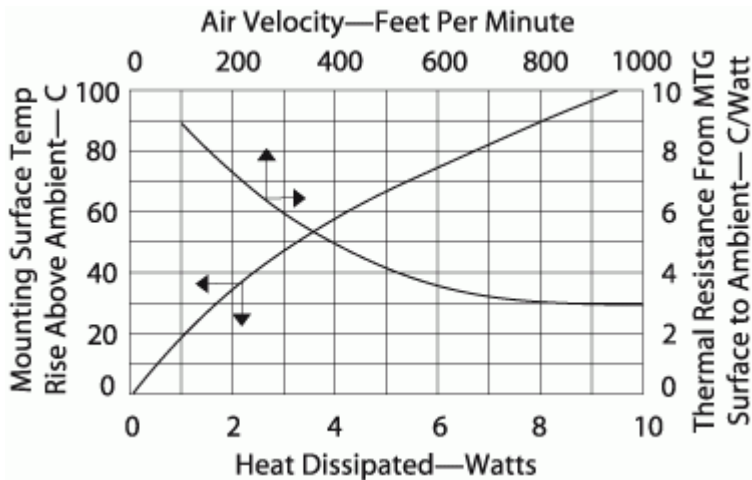
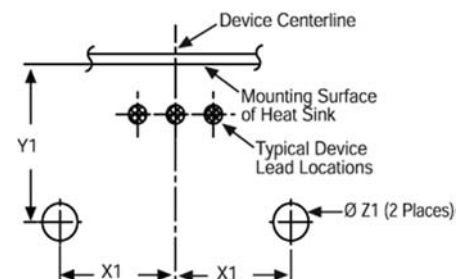
## MECHANICAL & PERFORMANCE

Drawing dimensions are shown in mm, (in)

Part Number	Finish
575002B00000G	Black Anodize
575002D00000G	Tin Plated
575002T00000G	Black Paint



Mounting Details:



## X-ON Electronics

Largest Supplier of Electrical and Electronic Components

*Click to view similar products for [Heat Sinks](#) category:*

*Click to view products by [Aavid](#) manufacturer:*

Other Similar products are found below :

[581102B00000G](#) [656-15ABPE](#) [657-20ABPNE](#) [7020B-TC12-MTG](#) [73452PPBA](#) [7G0011A](#) [PF720G](#) [A22-4026](#) [HAH10L](#) [1542616-1](#) [HS-2506-F1](#) [HS-87M0-F2](#) [218-40CTE3](#) [231-69PAB-15V](#) [SW50-4G](#) [231-75PAB-13V](#) [231-75PAB-15V](#) [253-122ABE-22](#) [PSC22CB](#) [CLP212SG](#) [CLP-7701G](#) [HAA083](#) [HAF10L](#) [HAQ10T](#) [D10100-28](#) [TO5-002D](#) [BDN183CBA01](#) [3-21053-4](#) [32438](#) [TX0506-1B](#) [TX1806B](#) [LAE66A3CB](#) [WA-DT2-101E](#) [511-3U](#) [73381PPBA](#) [73403PPBA](#) [7G0047C](#) [COMX-440-HSP](#) [510-12M](#) [D10650-40T5](#) [V8511 Y](#) [APF40-40-13CB/A01](#) [780653U04500G](#) [ATS-54310K-C2-R0](#) [FK 216 CB SA](#) [FK 231 SA 220](#) [648-51AB](#) [657-20ABPESC](#) [2341BG](#) [679-25AG](#)