



### BOARD LEVEL COOLING – Channel 5600

Channel 5600 is a series of channel board level heat sinks designed to cool TO-220 and TO-220-single gauge devices. Representative image only.

### ORDERING INFORMATION

Part Number	Device Type
563002B00000G	TO-220, TO-220-single gauge (0.020")
563002D00000G	TO-220, TO-220-single gauge (0.020")
563002T00000G	TO-220, TO-220-single gauge (0.020")
576602B00000G	TO-220, TO-220-single gauge (0.020")
576602D00000G	TO-220, TO-220-single gauge (0.020")
576602T00000G	TO-220, TO-220-single gauge (0.020")
7121DG	D2 Pak (TO-263)



### HEAT SINK DETAILS

Property	Details
Material	See Table Below
Finish	See Table Below
Device Attachment Options	Requires Mounting Kit
Thermal Interface Material	-

Property	Details
Heat Sink Width (mm)	25.40
Heat Sink Length (mm)	12.70
Heat Sink Height (mm)	See "H" Dim below
Heat Sink Mounting Direction	Vertical, Horizontal

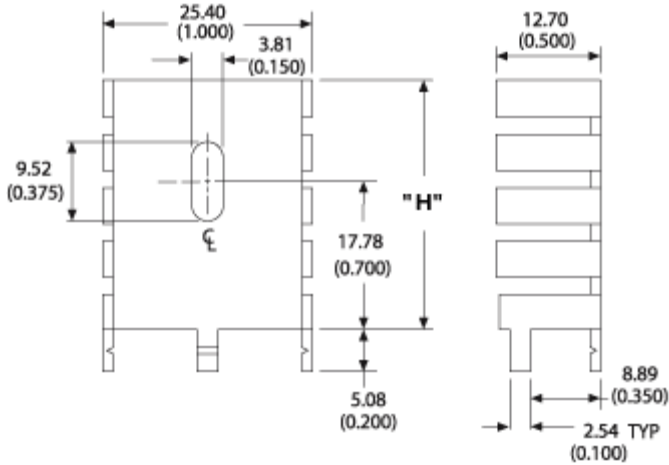
### MECHANICAL & PERFORMANCE

Drawing dimensions are shown in mm, (in)

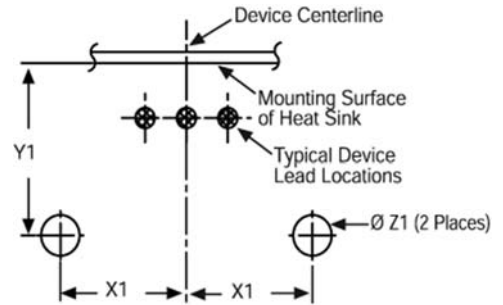
Part Number	Material	Finish	"H" Dim	"X" Dim	"Y" Dim	"YT" Dim	"Z" Dim
563002B00000G	Aluminum	Black Anodize	29.97	12.07 (0.475)	9.53 (0.375)	0.64 (0.025)	3.10 (0.122)
563002D00000G	Aluminum	Tin Plated	29.97	12.07 (0.475)	9.53 (0.375)	0.64 (0.025)	3.10 (0.122)
563002T00000G	Aluminum	Black Paint	29.97	12.07 (0.475)	9.53 (0.375)	0.64 (0.025)	3.10 (0.122)
576602B00000G	Aluminum	Black Anodize	24.13	12.07 (0.475)	9.53 (0.375)	0.64 (0.025)	3.10 (0.122)
576602D00000G	Aluminum	Tin Plated	24.13	12.07 (0.475)	9.53 (0.375)	0.64 (0.025)	3.10 (0.122)
576602T00000G	Aluminum	Black Paint	24.13	12.07 (0.475)	9.53 (0.375)	0.64 (0.025)	3.10 (0.122)
7121DG	Copper	Tin Plated	29.97	12.40 (0.488)	9.53 (0.375)	0.64 (0.025)	2.54 (0.100)

# Board Level Cooling – Channel 5600

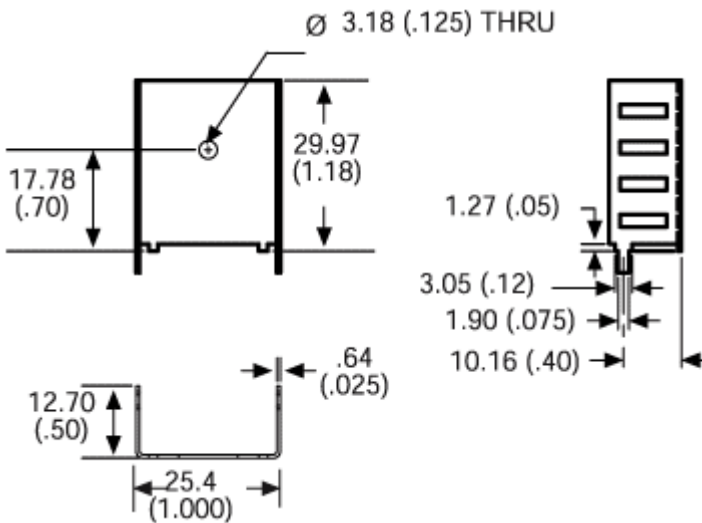
Part Numbers: 563002B00000G, 563002D00000G, 563002T00000G,  
576602B00000G, 576602D00000G, 576602T00000G



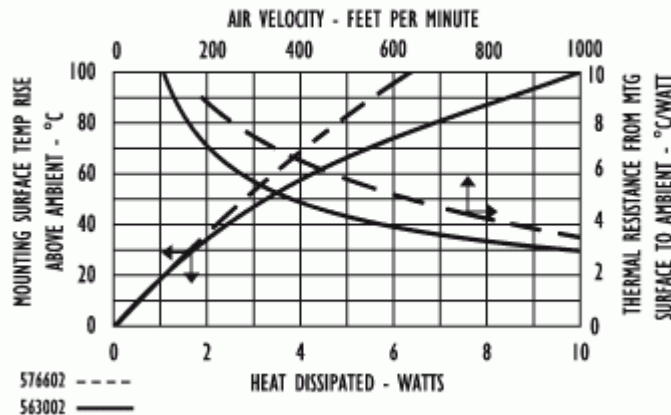
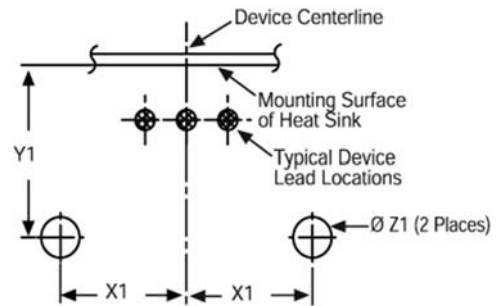
Mounting Details:



Part Number: 7121DG



Mounting Details:



## X-ON Electronics

Largest Supplier of Electrical and Electronic Components

*Click to view similar products for [Heat Sinks](#) category:*

*Click to view products by [Aavid](#) manufacturer:*

Other Similar products are found below :

[581102B00000G](#) [656-15ABPE](#) [657-20ABPNE](#) [7020B-TC12-MTG](#) [73452PPBA](#) [7G0011A](#) [PF720G](#) [A22-4026](#) [HAH10L](#) [1542616-1](#) [HS-2506-F1](#) [HS-87M0-F2](#) [218-40CTE3](#) [231-69PAB-15V](#) [25-7520](#) [SW50-4G](#) [231-75PAB-13V](#) [231-75PAB-15V](#) [253-122ABE-22](#) [PSC22CB](#) [CLP212SG](#) [CLP-7701G](#) [HAA083](#) [HAF10L](#) [HAQ10T](#) [D10100-28](#) [TO5-002D](#) [BDN183CBA01](#) [3-21053-4](#) [32438](#) [TX0506-1B](#) [TX1806B](#) [LAE66A3CB](#) [WA-DT2-101E](#) [511-3U](#) [73381PPBA](#) [73403PPBA](#) [7G0047C](#) [COMX-440-HSP](#) [510-12M](#) [D10650-40T5](#) [V8511](#) [Y](#) [APF40-40-13CB/A01](#) [780653U04500G](#) [ATS-54310K-C2-R0](#) [FK 216 CB SA](#) [FK 231 SA 220](#) [648-51AB](#) [657-20ABPESC](#) [2341BG](#)