



BOARD LEVEL COOLING – Plug In 5912

Plug In 5912 is a series of plug in channel board level heat sinks designed to cool TO-220, TO-220-single gauge, and TO-262 devices. Representative image only.

ORDERING INFORMATION

Part Number	Device Type
591202B00000G	TO-220, TO-220-single gauge, TO-262
591202B03100G	TO-220, TO-220-single gauge, TO-262
591202B03700G	TO-220, TO-220-single gauge
591202B04000G	TO-220, TO-220-single gauge, TO-262



HEAT SINK DETAILS

Property	Details
Material	Aluminum
Finish	Black Anodize
Device Attachment Options	Integrated Spring Action Clips
Thermal Interface Material	-

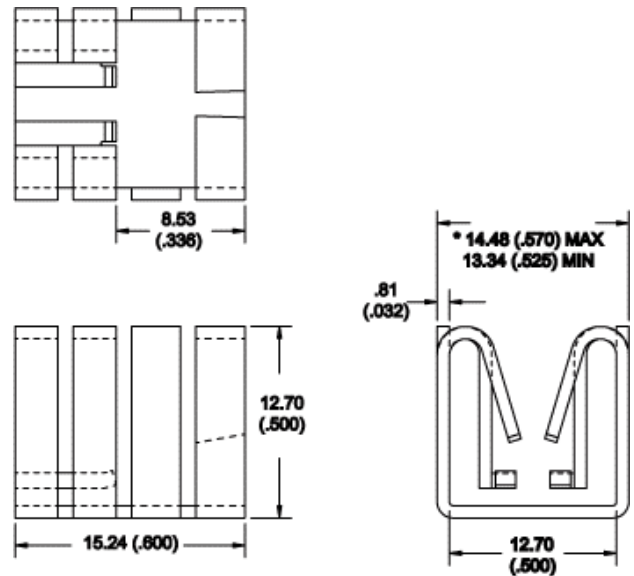
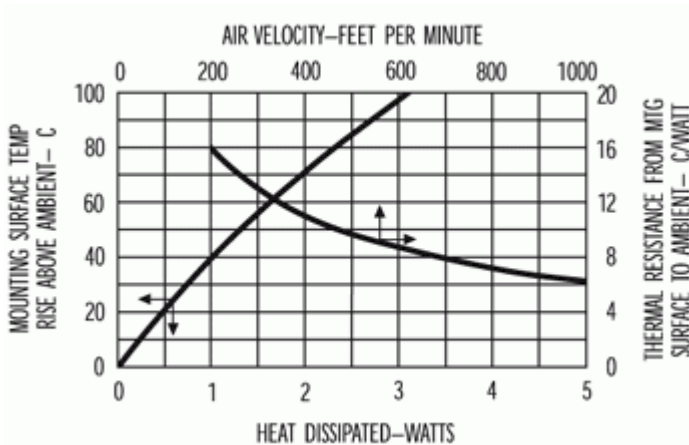
Property	Details
Heat Sink Width (mm)	12.70
Heat Sink Length (mm)	15.24
Heat Sink Height (mm)	14.48
Heat Sink Mounting Direction	Horizontal, Vertical

MECHANICAL & PERFORMANCE

Drawing dimensions are shown in mm, (in)

Part Number	"Y" Dim	"Z" Dim
591202B00000G	-	-
591202B03100G	8.28 (0.326)	1.73 (0.068)
591202B03700G	0.56 (0.022)	1.91 (0.075)
591202B04000G	0.41 (0.016)	1.75 (0.069)

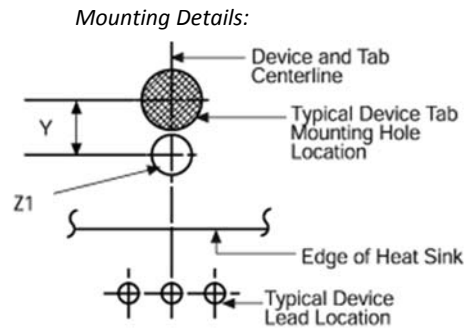
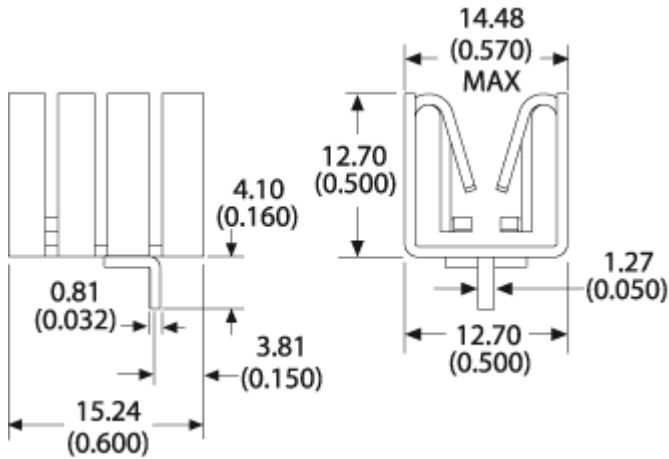
Part Number: 591202B00000G



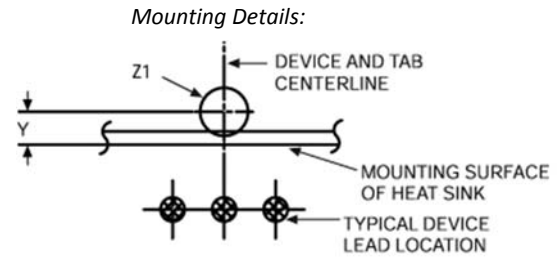
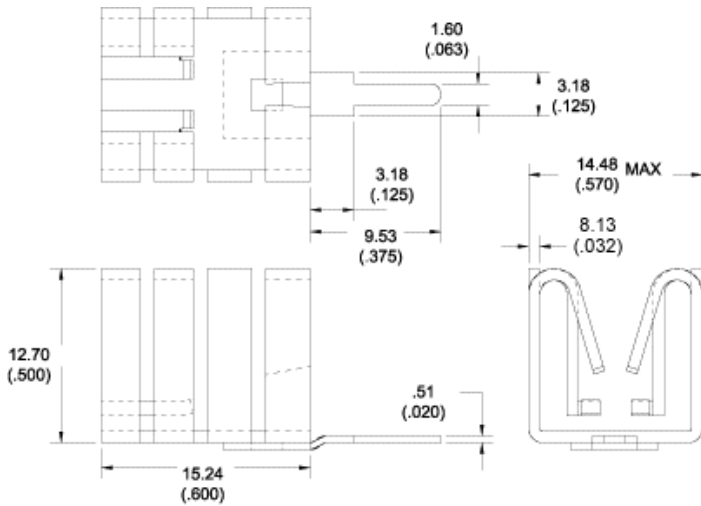
NOTES:
1. * DENOTES CRITICAL DIMENSION.

Board Level Cooling – Plug In 5912

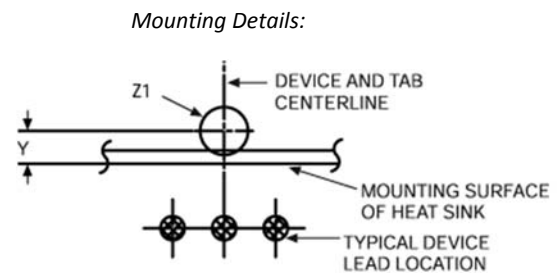
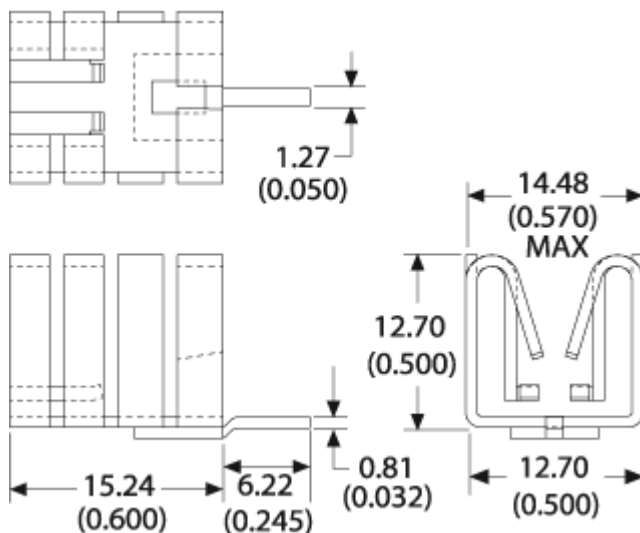
Part Number: 591202B03100G



Part Number: 591202B03700G



Part Number: 591202B04000G



X-ON Electronics

Largest Supplier of Electrical and Electronic Components

Click to view similar products for [Heat Sinks](#) category:

Click to view products by [Aavid](#) manufacturer:

Other Similar products are found below :

[581102B00000G](#) [656-15ABPE](#) [657-20ABPNE](#) [7020B-TC12-MTG](#) [73452PPBA](#) [7G0011A](#) [PF720G](#) [A22-4026](#) [HAH10L](#) [1542616-1](#) [HS-2506-F1](#) [HS-87M0-F2](#) [218-40CTE3](#) [231-69PAB-15V](#) [25-7520](#) [SW50-4G](#) [231-75PAB-13V](#) [231-75PAB-15V](#) [253-122ABE-22](#) [PSC22CB](#) [CLP212SG](#) [CLP-7701G](#) [HAA083](#) [HAF10L](#) [HAQ10T](#) [D10100-28](#) [TO5-002D](#) [BDN183CBA01](#) [3-21053-4](#) [32438](#) [TX0506-1B](#) [TX1806B](#) [LAE66A3CB](#) [WA-DT2-101E](#) [511-3U](#) [73381PPBA](#) [73403PPBA](#) [7G0047C](#) [COMX-440-HSP](#) [510-12M](#) [D10650-40T5](#) [V8511 Y](#) [APF40-40-13CB/A01](#) [780653U04500G](#) [ATS-54310K-C2-R0](#) [FK 216 CB SA](#) [FK 231 SA 220](#) [648-51AB](#) [657-20ABPESC](#) [2341BG](#)