



BOARD LEVEL COOLING - Channel 7021

Channel 7021 is a series of channel board level heat sinks designed to cool TO-220 and TO-220-single gauge devices. Representative image only.

ORDERING INFORMATION

Part Number	Device Type
7021BG	TO-220, TO-220-single gauge
7021B-MTG	TO-220, TO-220-single gauge
7021B-TC12-MTG	TO-220, TO-220-single gauge
7021B-TC10-MTG	TO-220, TO-220-single gauge



HEAT SINK DETAILS

Property	Details
Material	Aluminum
Finish	Black Anodize
Device Attachment Options	Thermal Clip (Factory Applied)
Thermal Interface Material	-

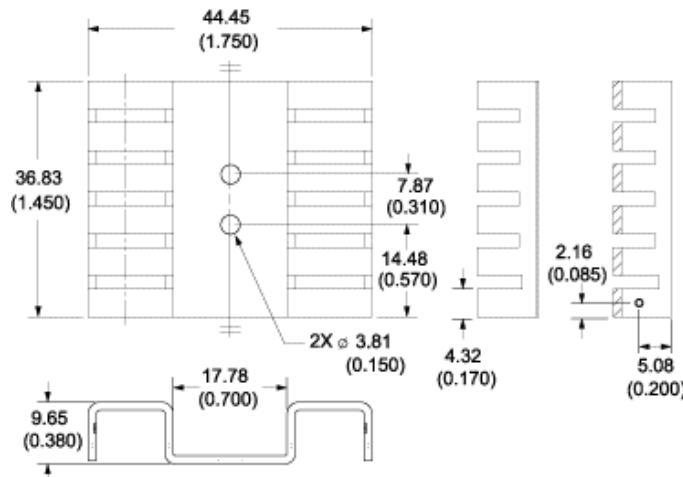
Property	Details
Heat Sink Width (mm)	44.45
Heat Sink Length (mm)	9.65
Heat Sink Height (mm)	36.83
Heat Sink Mounting Direction	Vertical

MECHANICAL & PERFORMANCE

Drawing dimensions are shown in mm, (in)

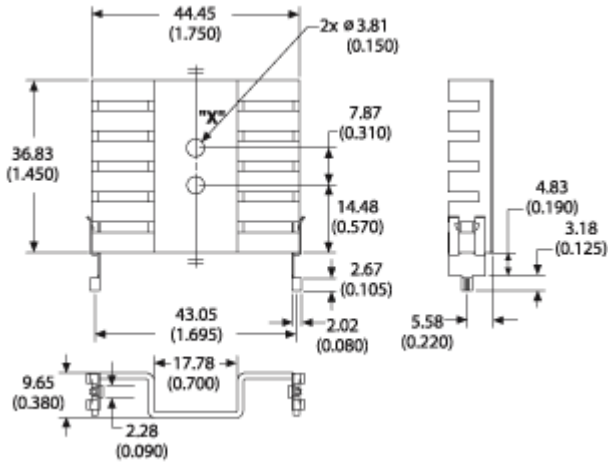
Part Number	"X" Dim	"Y" Dim	"Z" Dim
7021BG	-	-	-
7021B-MTG	20.77 (0.820)	3.81 (0.150)	2.95 (0.116)
7021B-TC12-MTG	21.59 (0.850)	3.81 (0.150)	3.10 (0.122)
7021B-TC10-MTG	21.59 (0.850)	3.81 (0.150)	3.10 (0.122)

Part Number: 7021BG

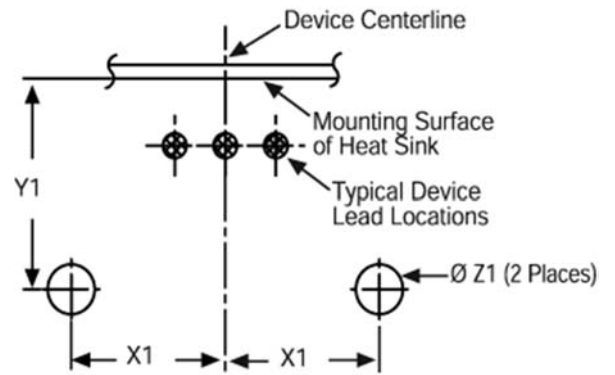


Board Level Cooling – Channel 7021

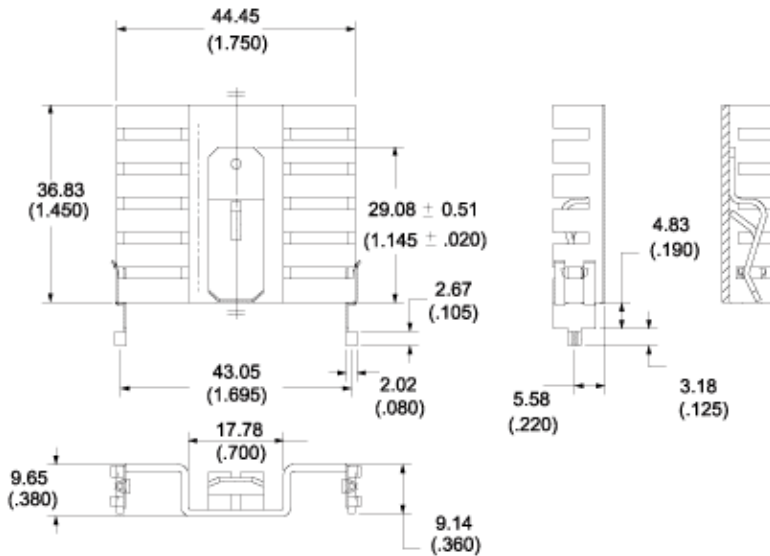
Part Number: 7021B-MTG



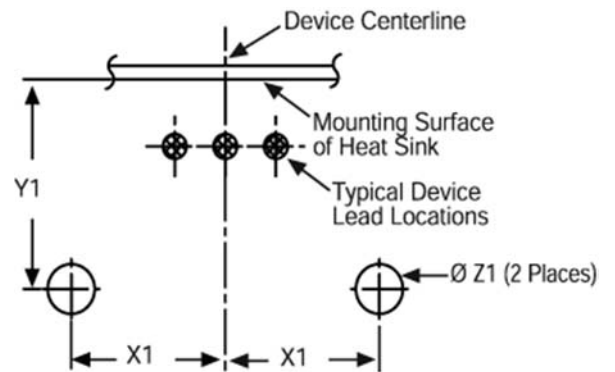
Mounting Details:



Part Number: 7021B-TC12-MTG

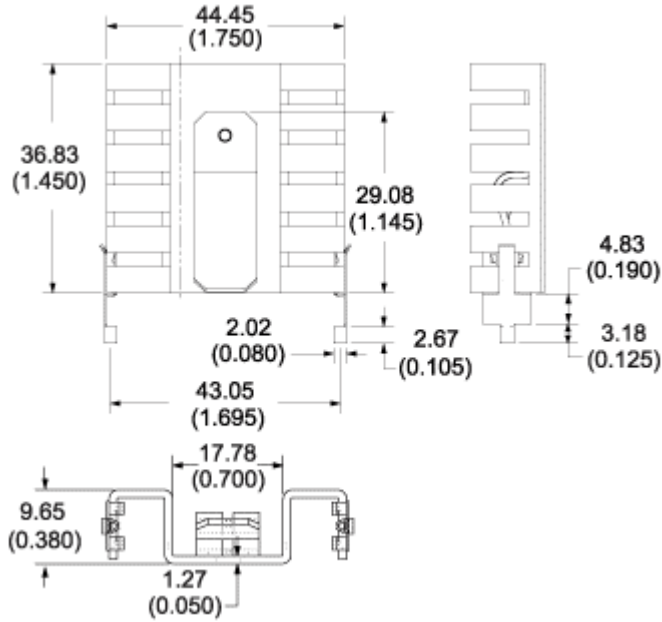


Mounting Details:

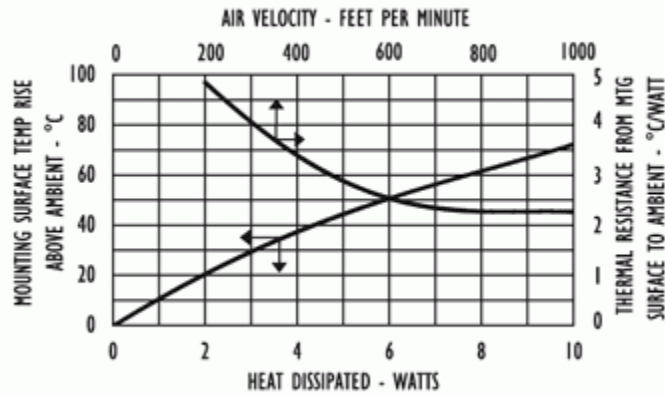
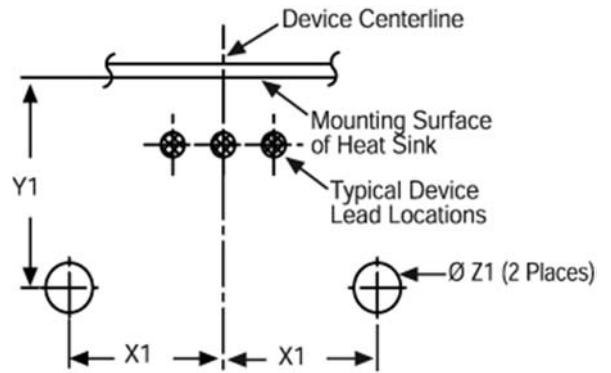


Board Level Cooling – Channel 7021

Part Number: 7021B-TC10-MTG



Mounting Details:



X-ON Electronics

Largest Supplier of Electrical and Electronic Components

Click to view similar products for [Heat Sinks](#) category:

Click to view products by [Aavid](#) manufacturer:

Other Similar products are found below :

[657-20ABPNE](#) [73452PPBA](#) [A22-4026](#) [120-1873-007](#) [218-40CTE3](#) [231-69PAB-15V](#) [231-75PAB-13V](#) [231-75PAB-15V](#) [253-122ABE-22](#)
[PSC22CB](#) [295-2](#) [CLP212SG](#) [D10100-28](#) [BDN183CBA01](#) [3-21053-4](#) [TX0506-1B](#) [LAE66A3CB](#) [511-3U](#) [73381PPBA](#) [73403PPBA](#) [8191-](#)
[E40](#) [510-12M](#) [529802B00000](#) [D10650-40T5](#) [6225B-MT6G](#) [ATS-54310K-C2-R0](#) [648-51AB](#) [657-20ABPESC](#) [679-25AG](#) [FK 212 CB SA](#)
[FK225 SA L1](#) [241404B91203G](#) [6801G](#) [680-5K](#) [7106DG/TR](#) [SK145 37 5STSTO220](#) [7109DG/TR](#) [TS-11042-CY](#) [S14K35G3S5](#) [8924G](#)
[7717-133DAP](#) [7717-26DAP](#) [4509](#) [SW25-4G](#) [CLP-215](#) [CLP-207](#) [D20850-40-T2](#) [APF30-30-10CB/A01](#) [V8508E](#) [268-85CTE](#)