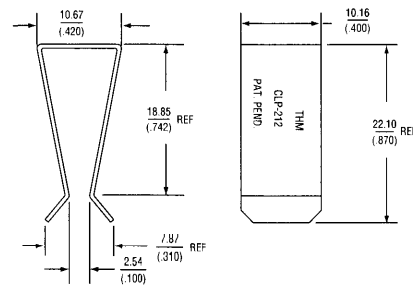


SECONDARY CLIPS

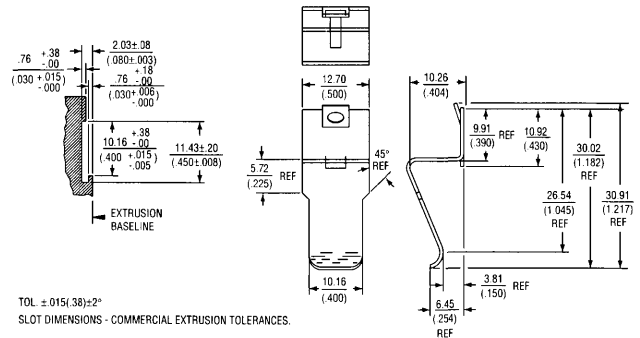
Secondary Clip Part Number	Transistor Case Style	Heat Sink Material Thickness mm (inches)
CLP-101	TO-220, TO-218, Multiwatt	1.27-2.03 (.050-.080)
CLP-201	TO-220	1.27-2.03 (.050-.080)
CLP-202	TO-220	2.29-3.18 (.090-.125)
CLP-203	TO-220	1.27-2.03 (.050-.080)
CLP-204	TO-220, TO-218	
CLP-206	TO-220, TO-218, Multiwatt	1.27-3.18 (.050-.125)
CLP-207	TO-220	1.27-2.03 (.050-.080)
CLP-211	TO-220, TO-218, Multiwatt	
CLP-212	TO-220, TO-218, Multiwatt	
CLP-214	TO-220, TO-218, Multiwatt	
CLP-215	TO-220, TO-218, Multiwatt	
4426 * , ♦	TO-220	
4525 * , ♦♦	TO-220	
4473 * , ♦	TO-218/TO-247	
4597 * , ♦♦	Multiwatt, TO-218/TO-247	

CLIPS FOR EXTRUSIONS

SECONDARY CLIPS



▲ CLP-212

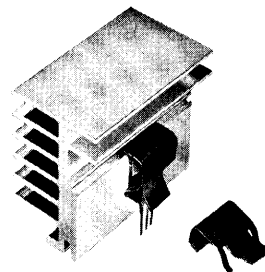
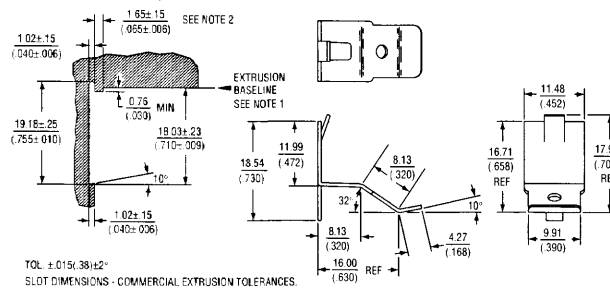


▲ CLP-214

CLP-214, CLP-215: Patents Pending

- * These clips fit the KL, KM, KP, KR, KV, KT, and YC extrusions.
- ♦ For easy and quick fitting. The stabilizing legs retain clip to heat sink to allow assembly prior to device fitment. Device can be removed and replaced without clip removal.
- ♦♦ Similar to the 4426 and 4473 clips but without the stabilizing legs, devices can therefore be placed closer together where space is at a premium. The 4597 clip is also suitable for the wider Multiwatt packages.

FITTING Assemble clip to the retaining rail by thumb pressure applied to the top/front of the clip – this will snap it firmly in place. Clips can be removed and re-used by gripping the clip immediately adjacent to the rail using long nosed pliers or similar, and twisting in an upward direction.

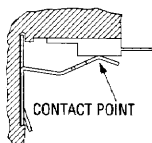


▲ KM75-1 + 4426 Clip

Notes:

- (1) The baseline location relative to the clip attachment dimensions should be adjusted to allow for insulator thickness if an insulator is used.
- (2) Dimension may be increased as needed to position transistor as desired under clip contact point.

▲ CLP-215



▲ 4426



▲ 4525



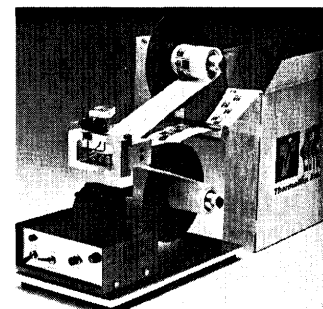
▲ 4473



▲ 4597

- Dispenses insulators and Conducta-Cote™ pre-coated with thermal grease, eliminating the mess and contamination of hand coating.
- The dispenser keeps pace with your production—the next insulator is available as soon as one is removed.

**INSUL-COTE™
AUTOMATED
DISPENSER**



X-ON Electronics

Largest Supplier of Electrical and Electronic Components

Click to view similar products for [Heat Sinks](#) category:

Click to view products by [Aavid](#) manufacturer:

Other Similar products are found below :

[657-20ABPNE](#) [73452PPBA](#) [A22-4026](#) [120-1873-007](#) [218-40CTE3](#) [231-69PAB-15V](#) [231-75PAB-13V](#) [231-75PAB-15V](#) [253-122ABE-22](#)
[PSC22CB](#) [295-2](#) [CLP212SG](#) [D10100-28](#) [BDN183CBA01](#) [3-21053-4](#) [TX0506-1B](#) [LAE66A3CB](#) [511-3U](#) [73381PPBA](#) [73403PPBA](#) [8191-](#)
[E40](#) [510-12M](#) [529802B00000](#) [D10650-40T5](#) [6225B-MT6G](#) [ATS-54310K-C2-R0](#) [648-51AB](#) [657-20ABPESC](#) [679-25AG](#) [FK 212 CB SA](#)
[FK225 SA L1](#) [241404B91203G](#) [6801G](#) [680-5K](#) [7106DG/TR](#) [SK145 37 5STSTO220](#) [7109DG/TR](#) [TS-11042-CY](#) [S14K35G3S5](#) [8924G](#)
[7717-133DAP](#) [7717-26DAP](#) [4509](#) [SW25-4G](#) [CLP-215](#) [CLP-207](#) [D20850-40-T2](#) [APF30-30-10CB/A01](#) [V8508E](#) [268-85CTE](#)