

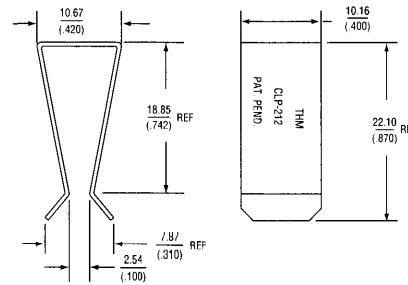
SECONDARY CLIPS

Secondary Clip Part Number	Transistor Case Style	Heat Sink Material Thickness mm (inches)
CLP-101	TO-220, TO-218, Multiwatt	1.27-2.03 (.050-.080)
CLP-201	TO-220	1.27-2.03 (.050-.080)
CLP-202	TO-220	2.29-3.18 (.090-.125)
CLP-203	TO-220	1.27-2.03 (.050-.080)
CLP-204	TO-220, TO-218	
CLP-206	TO-220, TO-218, Multiwatt	1.27-3.18 (.050-.125)
CLP-207	TO-220	1.27-2.03 (.050-.080)
CLP-211	TO-220, TO-218, Multiwatt	
CLP-212	TO-220, TO-218, Multiwatt	
CLP-214	TO-220, TO-218, Multiwatt	
CLP-215	TO-220, TO-218, Multiwatt	
4426 * , ♦	TO-220	
4525 * , ♦♦	TO-220	
4473 * , ♦	TO-218/TO-247	
4597 * , ♦♦	Multiwatt, TO-218/TO-247	

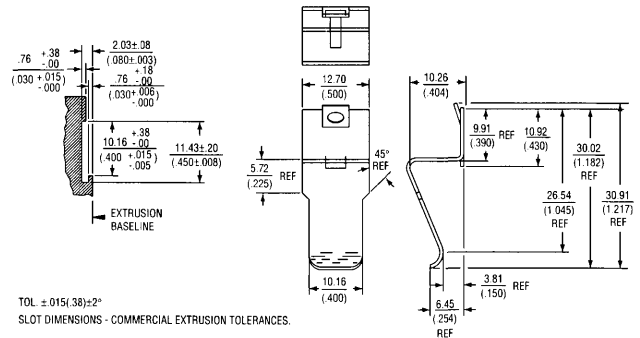
CLIPS FOR EXTRUSIONS

SECONDARY CLIPS

PRODUCTIVITY ENHANCEMENTS



▲ CLP-212

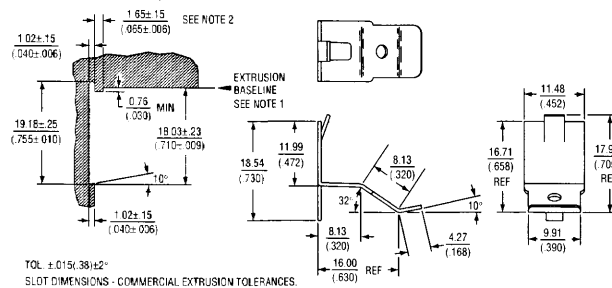


▲ CLP-214

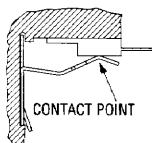
CLP-214, CLP-215: Patents Pending

- * These clips fit the KL, KM, KP, KR, KV, KT, and YC extrusions.
- ♦ For easy and quick fitting. The stabilizing legs retain clip to heat sink to allow assembly prior to device fitment. Device can be removed and replaced without clip removal.
- ♦♦ Similar to the 4426 and 4473 clips but without the stabilizing legs, devices can therefore be placed closer together where space is at a premium. The 4597 clip is also suitable for the wider Multiwatt packages.

FITTING Assemble clip to the retaining rail by thumb pressure applied to the top/front of the clip – this will snap it firmly in place. Clips can be removed and re-used by gripping the clip immediately adjacent to the rail using long nosed pliers or similar, and twisting in an upward direction.



▲ CLP-215



▲ 4426



▲ 4525

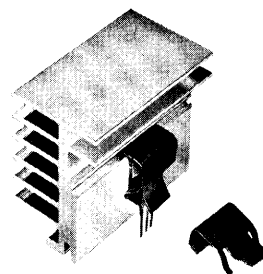


▲ 4473



▲ 4597

- Dispenses insulators and Conducta-Cote™ pre-coated with thermal grease, eliminating the mess and contamination of hand coating.
- The dispenser keeps pace with your production—the next insulator is available as soon as one is removed.

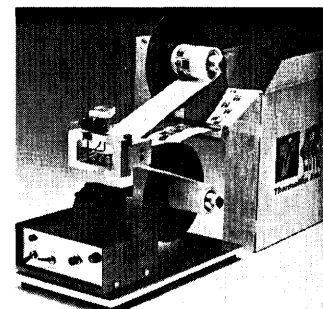


▲ KM75-1 + 4426 Clip

Notes:

- (1) The baseline location relative to the clip attachment dimensions should be adjusted to allow for insulator thickness if an insulator is used.
- (2) Dimension may be increased as needed to position transistor as desired under clip contact point.

INSUL-COTE™
AUTOMATED
DISPENSER



X-ON Electronics

Largest Supplier of Electrical and Electronic Components

Click to view similar products for [Thermal Interface Products](#) category:

Click to view products by [Aavid](#) manufacturer:

Other Similar products are found below :

[63072-2-4013](#) [64442-1-7612](#) [FGN80-2](#) [PFM-172-60](#) [95778-1-5171](#) [A-40](#) [APA502-80-001](#) [188761F00000G](#) [95779-1-5171](#) [9601-7](#) [9614-2-4013](#) [189790F00000](#) [189951F00000G](#) [2103-4-7320](#) [CN9565-000](#) [31570-2-4013](#) [LZ24-1](#) [LZ30-9](#) [450-20-0025](#) [5300AC](#) [1.500G](#)
[450-20-0017](#) [4949G](#) [08121](#) [08133](#) [08151](#) [08188](#) [08196](#) [54476-2-4013](#) [71883-2-4053](#) [188651F00000G](#) [64445-1-7612](#) [TVQF-1225-07S](#)
[66786-4-7320](#) [TP0001](#) [4860](#) [450-20-0148](#) [88601-2-2929](#) [SC80-W2](#) [09450-M45](#) [09362-M45](#) [V6516C](#) [A17713-05](#) [A17690-06](#) [A17690-10](#)
[A17690-05](#) [A17690-03](#) [A17690-04](#) [A17775-05](#) [A17775-06](#) [A17690-02](#)