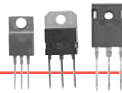


TO-220 & TO-218 & TO-247 Heat Sinks



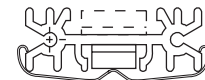
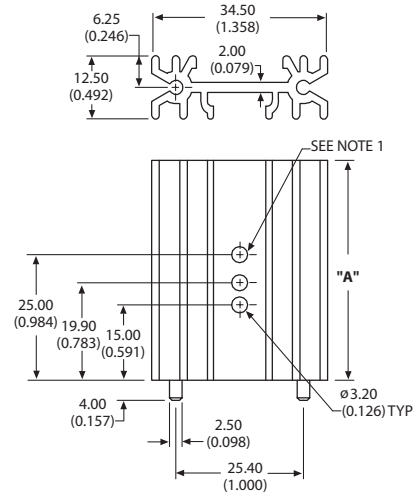
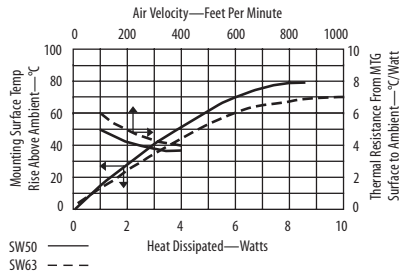
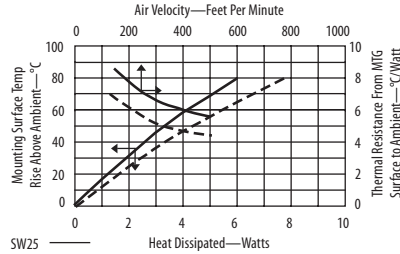
SW25, SW38, SW50, SW63

Extruded heat sink with unequal channel widths



Extruded heat sink with unequal channel widths front and back

can accommodate a TO-220, TO-218, or TO-247 devices. Includes two solderable mounting pins which permit vertical mounting and eliminate stress on device leads. Available in three heights. Version without hole uses clip 5901 (sold separately) to attach device. See page 97 for clip information.



NOTE 1: This hole not present in SW25 model

Material: Aluminum
Finish: Black Anodize

ORDERING INFORMATION

| Part Number | Description | "A" Dim | Holes | Dia of PCB Plated Thru Hole for Pins |
|-------------|---|---------------|-------|--------------------------------------|
| SW25-2G | Extruded heat sink with unequal channel widths front and back | 25.00 (0.984) | No | 3.00 (0.118) |
| SW25-4G | With device mounting holes | 25.00 (0.984) | Yes | 3.00 (0.118) |
| SW38-2G | Extruded heat sink with unequal channel widths front and back | 38.00 (1.496) | No | 3.00 (0.118) |
| SW38-4G | With device mounting holes | 38.00 (1.496) | Yes | 3.00 (0.118) |
| SW50-2G | Extruded heat sink with unequal channel widths front and back | 50.00 (1.968) | No | 3.00 (0.118) |
| SW50-4G | With device mounting holes | 50.00 (1.968) | Yes | 3.00 (0.118) |
| SW63-2G | Extruded heat sink with unequal channel widths front and back | 63.00 (2.480) | No | 3.00 (0.118) |
| SW63-4G | With device mounting holes | 63.00 (2.480) | Yes | 3.00 (0.118) |

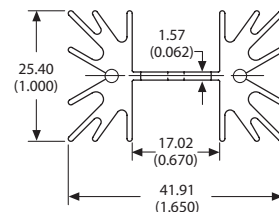
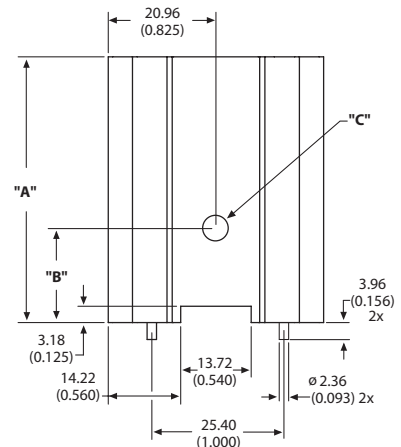
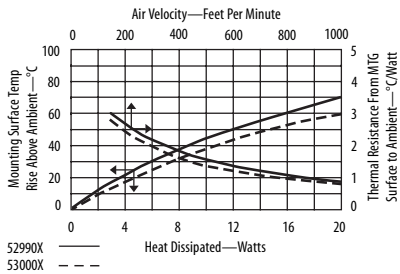
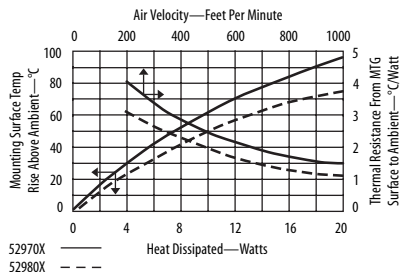
5297, 5298, 5299, 5300

Extruded heat sink with large radial fins



Extruded heat sink with large radial fins

features equal channel widths on both sides for single or dual device mounting. Includes two solderable mounting pins which permit vertical mounting and eliminate stress on device leads. Available in four heights for TO-220, TO-218, and TO-247 devices.



Material: Aluminum
Finish: Black Anodize

ORDERING INFORMATION

| Part Number | Device | "A" Dim | "B" Dim | "C" Dim | Dia of PCB Plated Thru Hole for Pins |
|---------------|----------------|---------------|---------------|--------------|--------------------------------------|
| 529701B02500G | TO-218, TO-247 | 25.40 (1.000) | 21.59 (0.850) | 3.66 (0.144) | 2.67 (0.105) |
| 529702B02500G | TO-220 | 25.40 (1.000) | 18.29 (0.720) | 3.17 (0.125) | 2.67 (0.105) |
| 529801B02500G | TO-218, TO-247 | 38.10 (1.500) | 21.59 (0.850) | 3.66 (0.144) | 2.67 (0.105) |
| 529802B02500G | TO-220 | 38.10 (1.500) | 18.29 (0.720) | 3.17 (0.125) | 2.67 (0.105) |
| 529901B02500G | TO-218, TO-247 | 50.80 (2.000) | 21.59 (0.850) | 3.66 (0.144) | 2.67 (0.105) |
| 529902B02500G | TO-220 | 50.80 (2.000) | 18.29 (0.720) | 3.17 (0.125) | 2.67 (0.105) |
| 530001B02500G | TO-218, TO-247 | 63.50 (2.500) | 21.59 (0.850) | 3.66 (0.144) | 2.67 (0.105) |
| 530002B02500G | TO-220 | 63.50 (2.500) | 18.29 (0.720) | 3.17 (0.125) | 2.67 (0.105) |

For additional options see page 83

X-ON Electronics

Largest Supplier of Electrical and Electronic Components

Click to view similar products for [Heat Sinks](#) category:

Click to view products by [Aavid](#) manufacturer:

Other Similar products are found below :

[581102B00000G](#) [630-35ABT3](#) [656-15ABPE](#) [657-20ABPNE](#) [73452PPBA](#) [7721-13NG](#) [7G0011A](#) [FI306/SE](#) [PF720G](#) [A22-4026](#) [120-1873-007](#) [HAH10L](#) [1542256-2](#) [1542026-1](#) [1542616-1](#) [HS-2506-F1](#) [HS-87M0-F2](#) [218-40CTE3](#) [25-7520](#) [188854F00000G](#) [F-QB-F1](#) [APA501-60-003](#) [253-122ABE-22](#) [PSC22CB](#) [CLP-201](#) [CLP212SG](#) [CLP-7701G](#) [HAA072](#) [HAA083](#) [HAF10L](#) [HAQ10T](#) [D10100-28](#) [TO5-002D](#) [513101B02500G](#) [BDN183CBA01](#) [531202B0000](#) [HS-56M0-C1](#) [3-21053-4](#) [TX0506-1B](#) [TX1806B](#) [336614B-00000](#) [V2004X](#) [LAE66A3CB](#) [WA-DT2-101E](#) [511-3U](#) [017177](#) [530510B00000G](#) [6110BG](#) [73381PPBA](#) [73403PPBA](#)