

# System pro M compact® Switch disconnecter SHD 200



2CDC051002S0012



2CDC051004S0012

The SHD 200 extends the proven System pro M compact® series by a new range of switch disconnectors. The series is available with 1 to 4 poles with rated currents from 16 to 63 A and provides disconnection properties according to IEC/EN 60947-3.

A rated voltage of 240/415 V AC and a rated conditional short-circuit current of 10 kA enables a wide range of use.

The laser printing and the design of the devices allow a consistent optical appearance in the distribution board.

## Special features

- Isolating characteristics acc. to IEC/EN 60947-3
- Protection degree IP20 = finger safe
- 25 mm<sup>2</sup> cage terminal
- Consistent design to all other System pro M DIN rail products
- Cross wiring with MCBs or RCDs using busbars PS
- Durable device identification due to laser labeling
- Captive screws with recessed head
- Locking device as accessory for unauthorized ON/OFF switching
- Approved acc. to IEC/EN 60947-3 for international use

# Switch disconnecter SHD 200

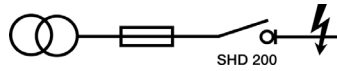
## Technical data

<b>Electrical data</b>	
Standards	IEC/EN 60947-3
Poles	1P, 2P, 3P, 4P
Rated current $I_n$	16 A, 25 A, 32 A, 40 A, 50 A, 63 A
Utilization category	AC-22A, DC-21A
Rated voltage $U_n$	1P: 240 V AC, 60 V DC 2P: 415 V AC, 125 V DC 3...4P: 415 V AC
Insulation voltage $U_i$	440 V AC
Max. power frequency recovery voltage $U_{max}$	1P: 252 V AC, 63 V DC 2P: 436 V AC, 131 V DC 3...4P: 436 V AC
Min. operating voltage $U_{Bmin}$	12 V AC
Rated frequency $f$	50/60 Hz, DC
Suitable for isolation	Yes
Rated conditional short-circuit current	10 kA in series with NH 00 $\leq$ 63 A gG
Overvoltage category	III
Pollution degree	3
Rated impulse withstand voltage $U_{imp}$ (1.2/50 $\mu$ s)	4 kV (test voltage 6.2 kV at sea level; 5 kV at 2,000 m)
Dielectric test voltage	2 kV (50/60 Hz, 1 min.)
<b>Mechanical data</b>	
Housing	Insulation group II, RAL 7035
Toggle	Insulation group II, red, sealable
Contact position indication	Marking on toggle, I ON / 0 OFF
Protection degree acc. to EN 60529	IP20 / IP40 in enclosure with cover
Electrical endurance	$I_n < 32$ A: 20,000 ops. (AC), 1,500 ops. (DC) $I_n \geq 32$ A: 10,000 ops. (AC), 1,500 ops. (DC)
Mechanical endurance	20,000 ops.
Shock resistance acc. to IEC/EN 60068-2-27	25 g, 2 shocks, 13 ms
Vibration resistance acc. to IEC/EN 60068-2-6	5g, 20 cycles at 5...150...5 Hz with load 0.8 I <sub>n</sub>
Environmental conditions (damp heat cyclic) acc. to EC/EN 60068-2-30	28 cycles with 55°C/90-96% and 25°C/95-100% [°C/RH]
Ambient temperature	-25 ... +55 °C
Storage temperature	-40 ... +70 °C
<b>Installation</b>	
Terminal	Cage terminal
Safety wire guard	No
Two terminal openings for conductor and busbar	No
Cross-section of conductors	25 mm <sup>2</sup>
Torque	2.0 Nm
Screwdriver	No. 2 Pozidrive
Mounting	On DIN rail 35 mm acc. to EN 60715 by fast clip
Mounting position	Optional
Removal without disassembling of the busbar	No
Supply	Optional
<b>Dimensions and weight</b>	
Mounting dimensions acc. to DIN 43880	Mounting dimension 1
Pole dimensions (H x D x W)	85 x 69 x 17.5 mm
Pole weight	approx. 75 g
<b>Combination with auxiliary elements</b>	
Auxiliary contact	No
Signal/auxiliary contact	No
Shunt trip	No
Undervoltage release	No
Motor operating device	No
Padlock	Yes
<b>Approvals</b>	
	CE and RoHS conform
	Approvals: VDE

# Switch disconnecter SHD 200

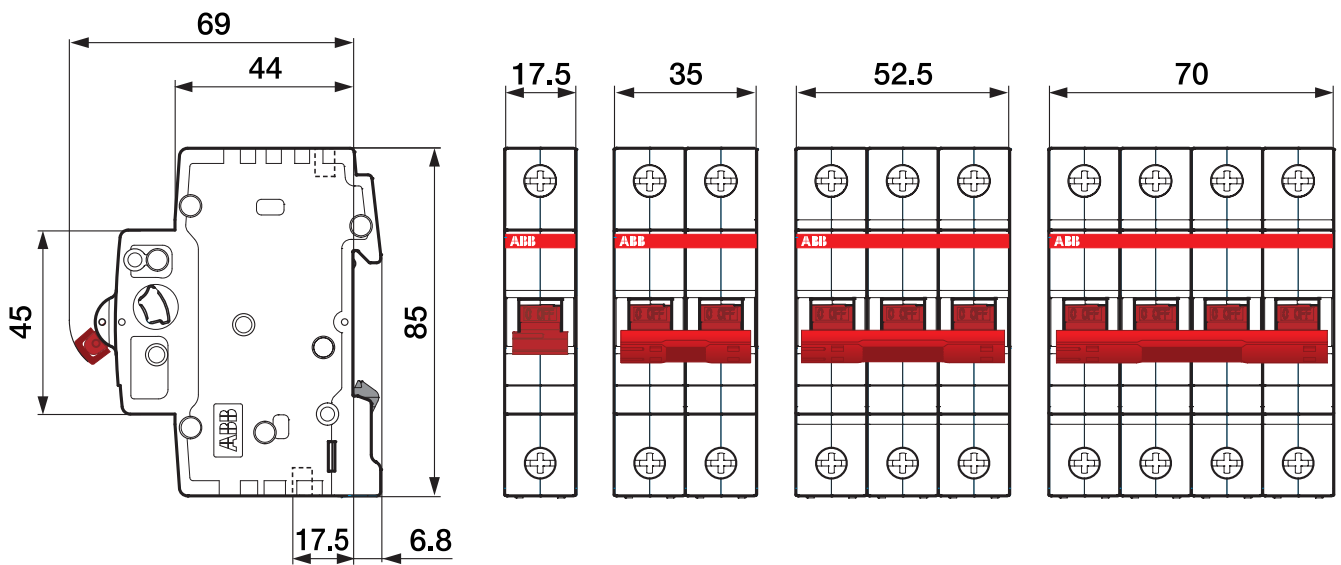
## Conditional short-circuit resistance, dimensional drawing and wiring diagrams

Conditional short-circuit resistance (in kA) in combination with back-up protection



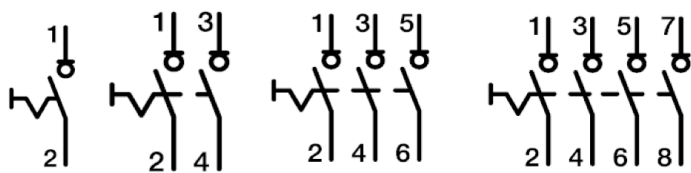
		Supply side: NH 00 – gG						
Load side:	$I_e$ (A)	16	25	32	40	50	63	
SHD 200	16	10						
	25	10	10					
	32	10	10	10				
	40	10	10	10	10			
	50	10	10	10	10	10		
	63	10	10	10	10	10	10	

### Dimensional drawing



2CDC 052 006 F0012

### Wiring diagrams

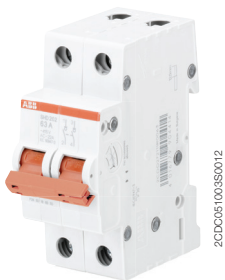


# Switch disconnecter SHD 200

## Ordering data



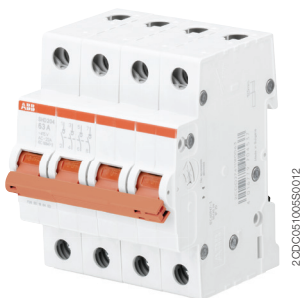
SHD 201



SHD 202



SHD 203



SHD 204

### Rated current: 16 A

Poles	Rated voltage V AC	Bbn 4016779 EAN	Type	Order code	Weight 1 piece kg	Pack unit pc.
1	240	904308	SHD201/16	2CDD271111R0016	0.075	10
2	415	904360	SHD202/16	2CDD272111R0016	0.150	5
3	415	904421	SHD203/16	2CDD273111R0016	0.225	1
4	415	904483	SHD204/16	2CDD274111R0016	0.300	1

### Rated current: 25 A

Poles	Rated voltage V AC	Bbn 4016779 EAN	Type	Order code	Weight 1 piece kg	Pack unit pc.
1	240	904315	SHD201/25	2CDD271111R0025	0.075	10
2	415	904377	SHD202/25	2CDD272111R0025	0.150	5
3	415	904438	SHD203/25	2CDD273111R0025	0.225	1
4	415	904490	SHD204/25	2CDD274111R0025	0.300	1

### Rated current: 32 A

Poles	Rated voltage V AC	Bbn 4016779 EAN	Type	Order code	Weight 1 piece kg	Pack unit pc.
1	240	904322	SHD201/32	2CDD271111R0032	0.075	10
2	415	904384	SHD202/32	2CDD272111R0032	0.150	5
3	415	904445	SHD203/32	2CDD273111R0032	0.225	1
4	415	904506	SHD204/32	2CDD274111R0032	0.300	1



SHD 201

**Rated current: 40 A**

Poles	Rated voltage V AC	Bbn 4016779 EAN	Type	Order code	Weight 1 piece kg	Pack unit pc.
1	240	904339	SHD201/40	2CDD271111R0040	0.075	10
2	415	904391	SHD202/40	2CDD272111R0040	0.150	5
3	415	904452	SHD203/40	2CDD273111R0040	0.225	1
4	415	904513	SHD204/40	2CDD274111R0040	0.300	1



SHD 202

**Rated current: 50 A**

Poles	Rated voltage V AC	Bbn 4016779 EAN	Type	Order code	Weight 1 piece kg	Pack unit pc.
1	240	904346	SHD201/50	2CDD271111R0050	0.075	10
2	415	904407	SHD202/50	2CDD272111R0050	0.150	5
3	415	904469	SHD203/50	2CDD273111R0050	0.225	1
4	415	904520	SHD204/50	2CDD274111R0050	0.300	1



SHD 203

**Rated current: 63 A**

Poles	Rated voltage V AC	Bbn 4016779 EAN	Type	Order code	Weight 1 piece kg	Pack unit pc.
1	240	904353	SHD201/63	2CDD271111R0063	0.075	10
2	415	904414	SHD202/63	2CDD272111R0063	0.150	5
3	415	904476	SHD203/63	2CDD273111R0063	0.225	1
4	415	904537	SHD204/63	2CDD274111R0063	0.300	1



SHD 204

# Contact us

## **ABB STOTZ-KONTAKT GmbH**

Eppelheimer Straße 82  
69123 Heidelberg, Germany  
Phone: +49 (0) 6221 7 01-0  
Fax: +49 (0) 6221 7 01-13 25  
E-Mail: [info.desto@de.abb.com](mailto:info.desto@de.abb.com)

You can find the address of your  
local sales organization on the  
ABB home page  
<http://www.abb.com/contacts>  
-> Low Voltage Products and Systems

## **Note:**

We reserve the right to make technical changes or modify the contents of this document without prior notice. With regard to purchase orders, the agreed particulars shall prevail. ABB AG does not accept any responsibility whatsoever for potential errors or possible lack of information in this document.

We reserve all rights in this document and in the subject matter and illustrations contained therein. Any reproduction, disclosure to third parties or utilization of its contents – in whole or in parts – is forbidden without prior written consent of ABB AG.

Copyright© 2013 ABB  
All rights reserved

Order number 2CDC 441 016 D0201 (05/13-pdf)

## X-ON Electronics

Largest Supplier of Electrical and Electronic Components

*Click to view similar products for [Circuit Breakers](#) category:*

*Click to view products by [ABB](#) manufacturer:*

Other Similar products are found below :

[LUGZX66-1-61-20.0-44](#) [M39019/01-201](#) [M39019/01-221](#) [M39019/04-249S](#) [M39019/04-313S](#) [M55629/1-016](#) [M55629/1-018](#) [M55629/1-021](#)  
[M55629/1-033](#) [M55629/1-046](#) [M55629/1-048](#) [M55629/1-058](#) [M55629/1-067](#) [M55629/1-070](#) [M55629/1-079](#) [M55629/1-084](#) [M55629/1-085](#)  
[M55629/1-109](#) [M55629/11-102](#) [M55629/12-045](#) [M55629/12-046](#) [M55629/1-330](#) [M55629/1-366](#) [M55629/1-387](#) [M55629/1-401](#) [M55629/2-](#)  
[022](#) [M55629/2-030](#) [M55629/2-072](#) [M55629/2-082](#) [M55629/2-099](#) [M55629/2-101](#) [M55629/2-102](#) [M55629/21-BM-BM](#) [M55629/21-HM-HM](#)  
[M55629/21-NS-NS](#) [M55629/22-NR-NR-NR](#) [M55629/22-RS-RS-RS](#) [M55629/2-347](#) [M55629/2-401](#) [M55629/2-413](#) [M55629/3-030](#)  
[M55629/3-050](#) [M55629/3-102](#) [M55629/3-103](#) [M55629/3-128](#) [M55629/3-130](#) [M55629/3-238](#) [M55629/3-386](#) [M55629/3-LBZB](#) [M55629/4-](#)  
[115](#)