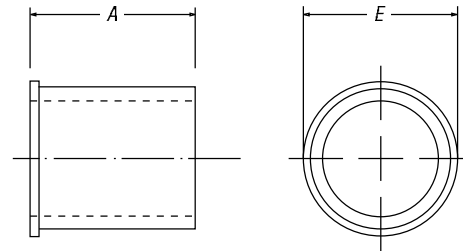


## Wire Joints for Copper Conductor

All-around compression ensures high conductivity, low resistance and high pull-out values exceeding UL<sup>®</sup> requirements.

### Compression Wire Joints for Copper Conductor

- Ideal for pigtailing, tapping multiple conductors or two-way splicing
- Form a permanent installation in minimal space
- Easily insulated
- Offer lowest installed cost
- Made of high-conductivity copper and electro-tin-plated
- Colored-coded to dies for positive matching and compression



CAT. NO.	CIRCULAR MIL AREA		CABLE COMBINATION		DIM. (IN.)		COLOR CODE	INSTALLING TOOLS					
	MIN.	MAX.	MIN.	MAX.	A	E		TBM25S/21E		TBM8/8S	TBM5/5S	TBM6 & TBM6S	
								DIE CAT. NO.	DIE CAT. NO.	DIE CAT. NO.	UPPER	LOWER	
54610	19,590	27,290	(3) #12 sol. or str.	(2) #10 w/(1) #12 sol. or str.	.407	.370	BLUE	Included	—	—	13475	13477	
54615	31,140	43,400	(3) #10 sol. or str.	(4) #10 sol. or str.	.407	.430	GRAY	Included	13461	13454	13472	13476	
54620	49,530	65,560	(3) #8 sol. or str.	(1) #4 w/(2) #10 sol. or str.	.417	.475	BROWN	Included	—	—	13474	—	
54625-TB	66,040	87,130	(4) #8 sol. or str.	(1) #2 str w/(2) #12 sol. or str.	.479	.545	GREEN	—	—	—	—	—	
54630	83,480	99,990	(2) #4 sol. or str.	(2) #4 w/(1) #10 sol. or str.	.479	.585	PINK	—	13462	13455	13475	13477	
54635	99,060	124,220	(6) #8 str.	(2) #4 w/(2) #8 sol. or str.	.762	.620	BLACK	—	—	—	13474	—	
54640	125,220	166,120	(3) #4 sol. or str.	(3) #4 w/(2) #10 sol. or str.	.762	.695	ORANGE	—	—	—	—	—	
54645-TB	166,960	193,630	(4) #4 sol. or str.	(2) #1 w/(2) #10 sol. or str.	.824	.770	PURPLE	—	13463	13456	13475	—	
54650	189,190	244,020	(3) #2 str.	(2) #1/0 w/(2) #8 str.	.887	.830	YELLOW	—	—	—	13473	13476	

Hand tools only.

UL<sup>®</sup> Listed E9809 — code stranded

Tooling: pp. F-80-F-100

Die Selector Chart: pp. F-101-F-104

## X-ON Electronics

Largest Supplier of Electrical and Electronic Components

*Click to view similar products for [abb manufacturer](#):*

Other Similar products are found below :

[TV10-516R](#) [017667013](#) [RF727](#) [2CMA100178R1000](#) [5SDD 92Z0401](#) [ESV14-BS](#) [EZS-21-250](#) [F204AC-40/0.03](#) [F204AC-40/0.1](#) [F362-25/0.03](#) [GJL1211001R0011](#) [GJL1211201R8000](#) [GJL1211501R8000](#) [GJL1213001R0017](#) [GJL1213001R0101](#) [GJL1311001R0101](#) [GJL1311001R8010](#) [GJL1311201R0001](#) [GJL1313001R0011](#) [GJL1313001R0101](#) [GJL1317201R0001](#) [AF09-30-01-11](#) [AF460-30-11-68](#) [1455](#) [EF45-30](#) [ERG297](#) [HSC2-20](#) [1SAM201904R1001](#) [1SAM350000R1003](#) [1SAZ721201R1009](#) [1SAZ721201R1014](#) [1SAZ721201R1025](#) [1SFA611101R1002](#) [1SFA611130R1103](#) [1SFA611131R1101](#) [1SFA611143R1101](#) [1SFA611202R1108](#) [1SFA611203R1108](#) [1SFA611215R1001](#) [1SFA611216R1108](#) [1SFA611285R1002](#) [1SFA611702R6006](#) [1SFA616162R1025](#) [1SFA619100R3015](#) [1SVR730020R0200](#) [IPC4111](#) [OS30FACC12](#) [OS60GJ03](#) [OVR1N160277PS](#) [OXC1L48](#)