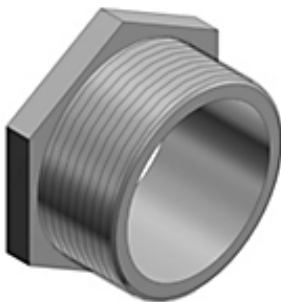




Actual



Representative

**Catalog Number:** 846  
**Product ID:** 7TAD013130R0012  
**UPC Number:** 78621000846  
**EAN Number:** 05414363146643  
**Status:** Active

1-1/2 Inch Chase Nipple, Malleable Iron for Use with Rigid/IMC Conduit

### North American Specifications (UNSPSC)

UNSPSC	39131718 Electrical conduit nipple
IGCC	5753 Electrical conduit nipple
Brand Name	T&B
Type	Chase Conduit Nipple
Application	To Effectively Bush Factory or Field-Punched, Cut, or Drilled Holes In Metal Boxes or Enclosures. To Couple Boxes Back-to-Back
Standard	UL E23018, CSA
Material	Malleable Iron
Trade Size	1-1/2 Inch

### European Specifications (ETIM)

ETIM	EC001469 Protective hose adapter
With outer thread	Y
Thread size outer thread metric	41
Material housing	Other
Material quality	Other
Surface protection	Untreated
Model	Straight
Material sealing	No sealing

### Packaging

Inner Quantity	10
Inner Dimensions (inches)	4x4.5x6
Outer Quantity	50
Outer Dimensions (inches)	21.6x5.3x7
Weight Uom	31 lbs. per 100

### Documents / Support Tools

Technical Drawing / Data Sheet	WSD-001846
Technical Drawing / Data Sheet Canada	Available on Website

### Header

3D Model	Available on Website
----------	----------------------

**For further technical assistance, please contact us...**

ABB Installation Products - USA  
 860 Ridge Lake Blvd.  
 Memphis, TN 38120  
 www.tnb.com

ABB Installation Products Technical Support  
 MS 3B-50  
 860 Ridge Lake Blvd.  
 Memphis, TN 38120

Hours: 7AM - 6PM CDT  
 Monday-Friday  
 Phone: (888) 862-3289  
 Fax: (901) 252-1321  
 Email: techsupport@tnb.com

## X-ON Electronics

Largest Supplier of Electrical and Electronic Components

*Click to view similar products for [abb manufacturer](#):*

Other Similar products are found below :

[TV10-516R](#) [017667013](#) [RF727](#) [2CMA100178R1000](#) [5SDD 92Z0401](#) [ESV14-BS](#) [EZS-21-250](#) [F204AC-40/0.03](#) [F204AC-40/0.1](#) [F362-25/0.03](#) [A40-30-10-84](#) [AF09-30-01-11](#) [AF460-30-11-68](#) [1455](#) [EF45-30](#) [ERG297](#) [HSC2-20](#) [1SAM201904R1001](#) [1SAM350000R1003](#) [1SAZ721201R1009](#) [1SAZ721201R1014](#) [1SAZ721201R1025](#) [1SDA057197R1](#) [1SFA611101R1002](#) [1SFA611130R1103](#) [1SFA611143R1101](#) [1SFA611201R1006](#) [1SFA611202R1108](#) [1SFA611203R1108](#) [1SFA611215R1001](#) [1SFA611216R1108](#) [1SFA611285R1002](#) [1SFA611521R1001](#) [1SFA611702R6006](#) [1SFA616162R1025](#) [1SFA619100R3015](#) [1SVR730020R0200](#) [IPC4111](#) [OS30FACC12](#) [OS60GJ03](#) [OVR1N160277PS](#) [OXC1L48](#) [254](#) [S2C-H6RU](#) [2CDS212001R0165](#) [A16R-30-10-84](#) [A50N2-30-11-84](#) [EZ-CHARGER](#) [EZL-21-V1](#) [AF116-30-11-13](#)