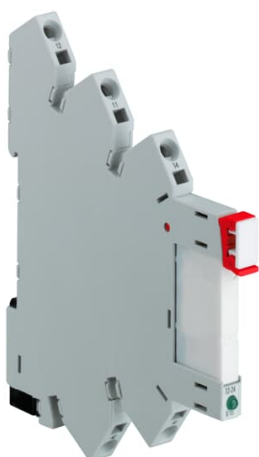


PRODUCT-DETAILS

CR-S024VADC1CRZ

CR-S024VADC1CRZ Interface relay cpl. 1c/o, A1-A2=24VAC/DC, Output=6A/250VAC



General Information

| | |
|-----------------------|--|
| Extended Product Type | CR-S024VADC1CRZ |
| Product ID | 1SVR405541R3210 |
| EAN | 4013614499302 |
| Catalog Description | CR-S024VADC1CRZ Interface relay cpl. 1c/o, A1-A2=24VAC/DC, Output=6A/250VAC |
| Long Description | CR-S024VADC1CRZ Interface relay cpl. 1c/o, A1-A2=24VAC/DC, Output=6A/250VAC spring terminals |

Ordering

| | |
|------------------------|---------------|
| EAN | 4013614499302 |
| Minimum Order Quantity | 10 piece |
| Customs Tariff Number | 85364900 |

Popular Downloads

| | |
|-----------------------------------|--------------------|
| Data Sheet, Technical Information | 2CDC110004C0210_05 |
| Instructions and Manuals | 2CDC117022D0201 |
| CAD Dimensional Drawing | 2CDC001079B0201 |

Dimensions

| | |
|----------------------------|---------|
| Product Net Width | 6.2 mm |
| Product Net Height | 76.6 mm |
| Product Net Depth / Length | 94.7 mm |
| Product Net Weight | 0.03 kg |

Technical

| | |
|---|---|
| Function | Fully assembled interface relay CR-S |
| Sub-Function | Relay with standard contacts |
| Rated Control Supply Voltage (U _s) | 24 V AC/DC |
| Output | 1 c/o (SPDT) contact |
| Output Signal | 250 V / 6 A |
| Terminal Type | Spring Terminals |
| Rated Operational Current AC-12 (I _e) | (230 V) 6 A |
| Rated Operational Current DC-12 (I _e) | (24 V) 6 A |
| Rated Operational Current DC-13 (I _e) | (24 V) 1 A |
| Degree of Protection | Terminals IP20 |
| Connecting Capacity | Flexible 2.5 mm ² Rigid 2.5 mm ² |
| Tightening Torque | 0.5 N·m |
| Wire Stripping Length | 7 mm |
| Mounting on DIN Rail | TH35-7.5 (35 x 7.5 mm Mounting Rail) acc. to IEC 60715 |
| Standards | CAN/CSA C22.2 No.14 IEC/EN 63000 IEC/EN 61810-1 IEC/EN 61984 UL 508 |

Technical UL/CSA

| | |
|----------------------------|---------------------------------|
| Connecting Capacity UL/CSA | Flexible 14 AWG Rigid 14 AWG |
| Tightening Torque UL/CSA | 4.42 in·lb |

Environmental

| | |
|-------------------------|--|
| Ambient Air Temperature | Operation -40 ... +70 °C Storage 0 ... +40 °C |
| RoHS Status | Following EU Directive 2011/65/EU |

Certificates and Declarations

| | |
|----------------------------------|-----------------------------|
| CSA Certificate | CSA_262671-2785865 |
| cURus Certificate | cURus508_E244328 |
| Declaration of Conformity - CE | 1SVD982017-0001 |
| Declaration of Conformity - UKCA | 1SVD982017-1000 |
| EAC Certificate | EAC_RU_C-DE.ME77.B.00443-19 |

Container Information

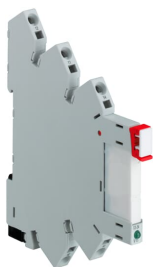
| | |
|--------------------------------|---------------|
| Package Level 1 Units | box 10 piece |
| Package Level 1 Width | 93 mm |
| Package Level 1 Depth / Length | 66 mm |
| Package Level 1 Height | 81 mm |
| Package Level 1 Gross Weight | 0.32 kg |
| Package Level 1 EAN | 4013614486678 |

Classifications

| | |
|----------------------------|----------------------------|
| Object Classification Code | K |
| ETIM 7 | EC001437 - Switching relay |
| ETIM 8 | EC001437 - Switching relay |
| ETIM 9 | EC001437 - Switching relay |
| eClass | V11.0 : 27371601 |
| UNSPSC | 39122331 |
| E-Number (Finland) | 2712372 |
| E-Number (Sweden) | 4001402 |

Categories

Low Voltage Products and Systems → Control Products → Electronic Relays and Controls → Interface Relays and Optocouplers



X-ON Electronics

Largest Supplier of Electrical and Electronic Components

Click to view similar products for [Industrial Relays](#) category:

Click to view products by [ABB](#) manufacturer:

Other Similar products are found below :

[6-1617801-8](#) [6-1618107-9](#) [7-1618273-3](#) [EV250-4A-02](#) [EV250-6A-01](#) [FCA-325-159](#) [FCA-410-138](#) [8-1618273-6](#) [9-1618397-7](#)
[GCA63A600VAC60HZ](#) [1-1833005-4](#) [H-16/S1](#) [H-8C](#) [H-8/S68](#) [ACC530U20](#) [RF303ZM4-12](#) [DH18DA](#) [AR4-15F13-C01](#) [AR7-41F11](#)
[ATL68011](#) [EB3L-S10SAN](#) [AVR907](#) [B329](#) [B490A](#) [1617020-1](#) [1618095-3](#) [1618104-9](#) [1618279-1](#) [BHR124Y](#) [N417](#) [2071229-4](#) [2-1617748-6](#)
[2-1618396-6](#) [2-1618398-1](#) [JMAPD-5XL](#) [PBE-120/208-ASE](#) [JMGACD-5M](#) [JMGSCD-5L](#) [PBO-40A3040](#) [KA-3C-12A](#) [RT334012WG](#)
[SF5201F02](#) [301-17SX](#) [SL6H3-26.5VDC](#) [1618105-2](#) [1618112-6](#) [1618276-6](#) [A837D](#) [A862B1](#) [ACC530U10](#)