

## Ferrules

### Features

- Ferrules ensure reliable electrical connections when terminating conductors in screw clamp terminal blocks
- Fraying and breaking of wire strands is prevented and the possibility of an unreliable connection is minimized
- Insulated ferrules prevent conductor breakage due to bending, wire stress or vibration, while facilitating wire insertions into the terminal block clamp
- Ferrules are the preferred alternative to twisting wire stands or tinning the wire end before terminating into a terminal block
- Ferrules are thin-walled copper tubes, which are mechanically crimped onto the ends of stranded wires
- They are easy to use — simply strip the wire, slide the ferrule onto the end of the wire and crimp
- Meets emerging global standards, requiring wire-to-metric style terminal block installations to be terminated with a "pin" style terminal
- Vinyl insulated, nylon insulated, and non-insulated styles
- All styles offered in #22 AWG to #10 AWG and compatible with existing Sta-Kon® tooling

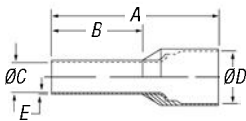
### How to Apply a Ferrule

- Strip the insulation from the end of the wire and insert into the insulated end of the ferrule
- Using the designated crimping tool, place the metal shaft into the tool's appropriate slot. Compress the tool to make a crescent-shape depression along the length of the ferrule
- Insert the crimped ferrule into the terminal block
- Tighten the ferrule and wire into the terminal block

### Materials

- High-conductivity copper
- Tin plating

## Insulated Ferrules

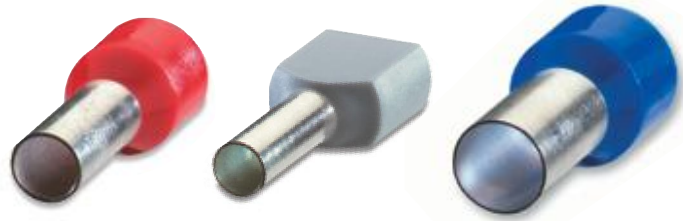


CAT. NO.	CONDUCTOR SECTION		COLOR	DIMENSIONS INCHES/MM					INSTALLATION TOOLING	PKG. QTY.
	AWG	MM <sup>2</sup>		A	B	ØC	ØD	E		
F4004	26	.14	Gray	.413/10.5	.236/6.0	.031/.80	.079/2.0	.010/.25	T3, ERG4	500
F4005	26	.14	Gray	.492/12.5	.315/8.0	.031/.80	.079/2.0	.010/.25	T3, ERG4	500
F4006	24	.25	Yellow	.413/10.5	.236/6.0	.031/.80	.079/2.0	.010/.25	T3, ERG4	500
F4007	24	.25	Yellow	.492/12.5	.315/8.0	.031/.80	.079/2.0	.010/.25	T3, ERG4	500
F4008	22	.34	Purple	.413/10.5	.236/6.0	.031/.80	.079/2.0	.010/.25	T3, ERG4	500
F4009	22	.34	Purple	.492/12.5	.315/8.0	.031/.80	.079/2.0	.010/.25	T3, ERG4	500
F2020	20	.50	White	.453/11.5	.236/6.0	.043/1.1	.098/2.5	.006/.15	T1, T3 & ERG4	500
F2021	20	.50	White	.531/13.5	.315/8.0	.043/1.1	.098/2.5	.006/.15	T1, T3 & ERG4	500
F2022	20	.50	White	.610/15.5	.394/10.0	.043/1.1	.098/2.5	.006/.15	T1, T3 & ERG4	500
F2023	18	.75	Gray	.472/12.0	.236/6.0	.051/1.3	.110/2.8	.006/.15	T1, T3 & ERG4	500
F2024	18	.75	Gray	.551/14.0	.315/8.0	.051/1.3	.110/2.8	.006/.15	T1, T3 & ERG4	500
F2025	18	.75	Gray	.630/16.0	.394/10.0	.051/1.3	.110/2.8	.006/.15	T1, T3 & ERG4	500
F2026	18	.75	Gray	.709/18.0	.472/12.0	.051/1.3	.110/2.8	.006/.15	T1, T3 & ERG4	500
F2027	18	1.00	Red	.492/12.5	.236/6.0	.059/1.5	.118/3.0	.006/.15	T1, T3 & ERG4	500
F2028	18	1.00	Red	.571/14.5	.315/8.0	.059/1.5	.118/3.0	.006/.15	T1, T3 & ERG4	500
F2029	18	1.00	Red	.650/16.5	.394/10.0	.059/1.5	.118/3.0	.006/.15	T1, T3 & ERG4	500
F2030	18	1.00	Red	.728/18.5	.472/12.0	.059/1.5	.118/3.0	.006/.15	T1, T3 & ERG4	500
F2031	16	1.50	Black	.571/14.5	.315/8.0	.071/1.8	.134/3.4	.006/.15	T1, T3 & ERG4	500
F2032	16	1.50	Black	.650/16.5	.394/10.0	.071/1.8	.134/3.4	.006/.15	T1, T3 & ERG4	500
F2033	16	1.50	Black	.728/18.5	.472/12.0	.071/1.8	.134/3.4	.006/.15	T1, T3 & ERG4	500
F2034	16	1.50	Black	.965/24.5	.708/18.0	.071/1.8	.134/3.4	.006/.15	T1, T3 & ERG4	500
F2035	14	2.50	Blue	.591/15.0	.315/8.0	.091/2.3	.165/4.2	.006/.15	T1, T3 & ERG4	500
F2036	14	2.50	Blue	.748/19.0	.472/12.0	.091/2.3	.165/4.2	.006/.15	T1, T3 & ERG4	500
F2037	14	2.50	Blue	.984/25.0	.708/18.0	.091/2.3	.165/4.2	.006/.15	T1, T3 & ERG4	500
F2038	12	4.00	Gray	.889/17.5	.394/10.0	.114/2.9	.189/4.8	.008/.20	T3 & ERG4	500
F2039	12	4.00	Gray	.787/20.0	.472/12.0	.114/2.9	.189/4.8	.008/.20	T3 & ERG4	500
F2040	12	4.00	Gray	1.024/26.0	.708/18.0	.114/2.9	.189/4.8	.008/.20	T3 & ERG4	100
F2041	10	6.00	Yellow	.787/20.0	.472/12.0	.142/3.6	.244/6.2	.008/.20	T3 & ERG4	100
F2042	10	6.00	Yellow	.984/25.0	.708/18.0	.142/3.6	.244/6.2	.008/.20	T3 & ERG4	100
F2043	8	10.00	Red	.827/21.0	.472/12.0	.181/4.6	.295/7.5	.008/.20	T3 & ERG4	100
F2044	8	10.00	Red	1.063/27.0	.708/18.0	.181/4.6	.295/7.5	.008/.20	T3 & ERG4	100
F2045	6	16.00	Blue	.906/23.0	.472/12.0	.236/6.0	.346/8.8	.008/.20	ERG4	100
F2046	6	16.00	Blue	1.142/29.0	.708/18.0	.236/6.0	.346/8.8	.008/.20	ERG4	50
F2047	4	25.00	Yellow	1.142/29.0	.630/18.0	.295/7.5	.433/11.0	.008/.20	ERG4	50
F2048	4	25.00	Yellow	1.220/31.0	.708/18.0	.295/7.5	.433/11.0	.008/.20	ERG4	50
F2049	4	25.00	Yellow	1.378/35.0	.866/22.0	.295/7.5	.433/11.0	.008/.20	ERG4	50
F2050	2	35.00	Red	1.181/30.0	.630/16.0	.335/8.5	.492/12.5	.008/.20	ERG4	50
F2051	2	35.00	Red	1.260/32.0	.708/18.0	.335/8.5	.492/12.5	.008/.20	ERG4	50
F2052	2	35.00	Red	1.535/39.0	.984/25.0	.335/8.5	.492/12.5	.008/.20	ERG4	50
F2053	1/0	50.00	Blue	1.417/36.0	.787/20.0	.413/10.5	.591/15.0	.014/.35	ERG4	50
F2054	1/0	50.00	Blue	1.614/41.0	.984/25.0	.413/10.5	.591/15.0	.014/.35	ERG4	50

Ferrule dimensions conform to DIN 46228, Part 4.

## Ferrules

### Strip Lengths on Insulated Ferrules



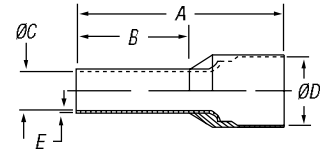
CAT. NO.	PIN LENGTH (IN.)	MIN. STRIP LENGTH (IN.)	MAX. STRIP LENGTH (IN.)
F2020	.236	.3147	.354
F2021	.315	.3937	.433
F2022	.394	.4727	.512
F2023	.236	.3147	.354
F2024	.315	.3937	.433
F2025	.394	.4727	.512
F2026	.472	.5507	.59
F2027	.236	.3147	.354
F2028	.315	.3937	.433
F2029	.394	.4727	.512
F2030	.472	.5507	.59
F2031	.315	.3937	.433
F2032	.394	.4727	.512
F2033	.472	.5507	.59
F2034	.708	.7867	.826
F2035	.315	.3937	.433
F2036	.472	.5507	.59
F2037	.708	.7867	.826
F2038	.394	.4727	.512
F2039	.472	.5507	.59
F2040	.708	.7867	.826
F2041	.472	.5507	.59
F2042	.708	.7867	.826
F2043	.472	.5507	.59
F2044	.708	.7867	.826
F2045	.472	.5507	.59
F2046	.708	.7867	.826
F2047	.63	.7087	.748
F2048	.708	.7867	.826
F2049	.866	.9447	.984
F2050	.53	.6087	.648
F2051	.708	.7867	.826
F2052	.984	1.0627	1.102
F2053	.787	.8657	.905
F2054	.984	1.0627	1.102

*Note: The thicker the insulation, the longer the strip length should be.*

CAT. NO.	PIN LENGTH (IN.)	MIN. STRIP LENGTH (IN.)	MAX. STRIP LENGTH (IN.)
F4000	.315	.3937	.433
F4001	.315	.3937	.433
F4002	.315	.3937	.433
F4003	.315	.3937	.433
F4004	.236	.3147	.354
F4005	.315	.3937	.433
F4006	.236	.3147	.354
F4007	.315	.3937	.433
F4008	.236	.3147	.354
F4009	.315	.3937	.433
F4020	.315	.3937	.433
F4021	.315	.3937	.433
F4022	.315	.3937	.433
F4023	.315	.3937	.433
F4024	.315	.3937	.433
F4027	.315	.3937	.433
F4028	.315	.3937	.433

## Ferrules

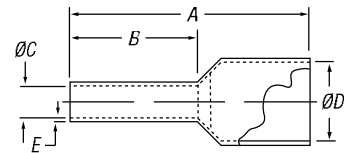
### Insulated Twin Ferrules



CAT. NO.	CONDUCTOR SECTION		COLORS	DIMENSIONS INCHES/MM					INSTALLATION TOOLING	PKG. QTY.
	AWG	MM		A	B	ØC	ØD	E		
F8000	2x 20	2x 0.50	White	.591/15.0	.315/8.0	.059/1.5	.177/4.5	.010/25	T3	500
F8001	2x 18	2x 0.75	Gray	.591/15.0	.315/8.0	.071/1.8	.201/5.1	.010/25	T3	500
F8002	2x 18	2x 0.75		.669/17.0	.394/10.0	.071/1.8	.201/5.1	.006/15	T3	500
F8003	2x 17	2x 1.00	Red	.591/15.0	.315/8.0	.081/2.05	.201/5.1	.006/15	T3	500
F8005	2x 17	2x 1.00		.669/17.0	.394/10.0	.081/2.05	.201/5.1	.006/15	T3	500
F8006	2x 16	2x 1.50	Black	.630/16.0	.315/8.0	.091/2.3	.252/6.4	.006/15	T3	500
F8007	2x 16	2x 1.50		.787/20.0	.472/12.0	.091/2.3	.252/6.4	.006/15	T3	500
F8008	2x 14	2x 2.50	Blue	.728/18.5	.394/10.0	.114/2.9	.295/7.5	.006/15	T3	500
F8009	2x 14	2x 2.50		.846/21.5	.512/13.0	.114/2.9	.295/7.5	.006/15	T3	500
F8010	2x 12	2x 4.00	Gray	.906/23.0	.472/12.0	.150/3.8	.339/8.6	.006/15	ERG4/6MM DIE	100
F8011	2x 10	2x 6.00	Yellow	.984/25.0	.551/14.0	.193/4.9	.378/9.6	.008/20	ERG4/10MM DIE	100

Ferrule dimensions conform to DIN 46228, Part 4.

### Insulated Ferrules (Old DIN and French Standards)



CAT. NO.	STYLE	CONDUCTOR SECTION			DIMENSIONS INCHES/MM					INSTALLATION TOOLING	PKG. QTY.
		AWG	MM	COLORS	A	B	ØC	ØD	E		
F4000	OLD DIN	20	0.50	Orange	.571/14.5	.315/8.0	.043/1.1	.102/2.6	.006/15	T1, T3 & ERG4	500
F4001	OLD DIN	18	0.75	White	.571/14.5	.315/8.0	.051/1.3	.110/2.8	.006/15	T1, T3 & ERG4	500
F4002	OLD DIN	18-17	1.00	Yellow	.571/14.5	.315/8.0	.059/1.5	.118/3.0	.006/15	T1, T3 & ERG4	500
F4003	OLD DIN	16	1.50	Red	.571/14.5	.315/8.0	.071/1.8	.134/3.4	.006/15	T1, T3 & ERG4	500
F4020	OLD DIN	14	2.50	Blue	.571/14.5	.315/8.0	.091/2.3	.165/4.2	.006/15	T1, T3 & ERG4	500
F4021	FRENCH	20	0.50	White	.571/14.5	.315/8.0	.043/1.1	.102/2.6	.006/15	T1, T3 & ERG4	500
F4023	FRENCH	18	0.75	Lt. Blue	.571/14.5	.315/8.0	.051/1.3	.110/2.8	.006/15	T1, T3 & ERG4	500
F4024	FRENCH	18-17	1.00	Red	.571/14.5	.315/8.0	.059/1.5	.118/3.0	.006/15	T1, T3 & ERG4	500
F4027	FRENCH	16	1.50	Black	.571/14.5	.315/8.0	.071/1.8	.134/3.4	.006/15	T1, T3 & ERG4	500
F4028	FRENCH	14	2.50	Gray	.571/14.5	.315/8.0	.091/2.3	.165/4.2	.006/15	T1, T3 & ERG4	500

Ferrule dimensions conform to DIN 46228, Part 4.

## The crimping tools you need!

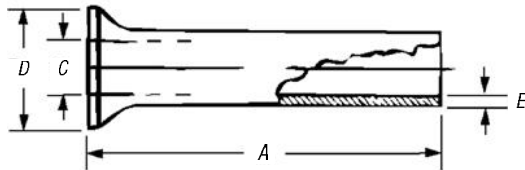
### Tooling for Sta-Kon® Insulated Ferrules

CAT. NO.	DESCRIPTION	PKG. QTY.
T1	Sta-Kon® Crimp Tool for wire ferrules #20-#14 AWG — insulated handle.	1
T3	Sta-Kon® Crimp Tool for wire ferrules #26-#10 AWG — insulated handle.	1
ERG4	Comfort Crimp® Sta-Kon® Crimp Tool with Shure-Stake® mechanism, for installing wire ferrules #26-1/0 AWG. Four interchangeable die sets included. Insulated handle. Packaged in sturdy plastic carrying case.	1



## Ferrules

### Non-Insulated Ferrules



CAT. NO.	CONDUCTOR SECTION		DIMENSIONS INCHES/MM				INSTALLATION TOOLING	PKG. QTY.
	AWG	MM	A	C	D	E		
F9000	24	.25	.196/5	.030/7.5	.067/1.7	.006/15	T1, ERG4 T3	1,000
F9001	22	.5	.236/6	.039/1.0	.083/2.1	.006/15	T1, T3, ERG4	1,000
F9002	22	.5	.394/10	.039/1.0	.083/2.1	.006/15	T1, T3, ERG4	1,000
F9003	18	.75	.236/6	.047/1.2	.091/2.3	.006/15	T1, T3, ERG4	1,000
F9004	18	.75	.394/10	.047/1.2	.091/2.3	.006/15	T1, T3, ERG4	1,000
F9005	18	1	.236/6	.055/1.4	.098/2.5	.006/15	T1, T3, ERG4	1,000
F9006	18	1	.394/10	.055/1.4	.098/2.5	.006/15	T1, T3, ERG4	1,000
F9007	16	1.5	.276/7	.067/1.7	.110/2.8	.006/15	T1, T3, ERG4	1,000
F9008	16	1.5	.394/10	.067/1.7	.110/2.8	.006/15	T1, T3, ERG4	1,000
F9009	16	1.5	.473/12	.067/1.7	.110/2.8	.006/15	T1, T3, ERG4	1,000
F9010	16	1.5	.709/18	.067/1.7	.110/2.8	.006/15	T1, T3, ERG4	1,000
F9011	14	2.5	.276/7	.087/2.2	.139/3.4	.006/15	T1, T3, ERG4	1,000
F9012	14	2.5	.394/10	.087/2.2	.139/3.4	.006/15	T1, T3, ERG4	1,000
F9013	14	2.5	.472/12	.087/2.2	.139/3.4	.006/15	T1, T3, ERG4	1,000
F9014	14	2.5	.709/18	.087/2.2	.139/3.4	.006/15	T1, T3, ERG4	1,000
F9015	12	4	.354/9	.110/2.8	.158/4	.008/2	T3, ERG4	1,000
F9016	12	4	.472/12	.110/2.8	.158/4	.008/2	T3, ERG4	1,000
F9017	12	4	.591/15	.110/2.8	.158/4	.008/2	T3, ERG4	1,000
F9018	12	4	.709/18	.110/2.8	.158/4	.008/2	T3, ERG4	1,000
F9019	10	6	.472/12	.138/3.5	.185/4.7	.008/2	T3, ERG4	1,000
F9020	10	6	.591/15	.138/3.5	.185/4.7	.008/2	T3, ERG4	1,000
F9021	10	6	.709/18	.138/3.5	.185/4.7	.008/2	T3, ERG4	1,000
F9022	8	10	.472/12	.177/4.5	.228/5.8	.008/2	ERG4	500
F9023	8	10	.591/15	.177/4.5	.228/5.8	.008/2	ERG4	500
F9024	8	10	.709/18	.177/4.5	.228/5.8	.008/2	ERG4	500
F9025	6	16	.472/12	.228/5.8	.295/7.5	.008/2	ERG4	250
F9026	6	16	.591/15	.228/5.8	.295/7.5	.008/2	ERG4	250
F9027	6	16	.709/18	.228/5.8	.295/7.5	.008/2	ERG4	250
F9028	6	16	.984/25	.228/5.8	.295/7.5	.008/2	ERG4	250
F9029	6	16	1.26/32	.228/5.8	.295/7.5	.008/2	ERG4	250
F9030	4	25	.591/15	.287/7.3	.374/9.5	.010/25	ERG4	100
F9031	4	25	.709/18	.287/7.3	.374/9.5	.010/25	ERG4	100
F9032	4	25	.984/25	.287/7.3	.374/9.5	.010/25	ERG4	100
F9033	4	25	1.26/32	.287/7.3	.374/9.5	.010/25	ERG4	100
F9034	2	35	.709/18	.327/8.3	.433/11	.010/25	ERG4	100
F9035	2	35	.984/25	.327/8.3	.433/11	.010/25	ERG4	100
F9036	2	35	1.26/32	.327/8.3	.433/11	.010/25	ERG4	100
F9037	1/0	50	.709/18	.406/10.3	.512/13	.012/3	TB5095, ERG4	100
F9038	1/0	50	.984/25	.406/10.3	.512/13	.012/3	TB5095, ERG4	100
F9039	1/0	50	1.18/30	.406/10.3	.512/13	.012/3	TB5095, ERG4	100

## X-ON Electronics

Largest Supplier of Electrical and Electronic Components

*Click to view similar products for [abb manufacturer](#):*

Other Similar products are found below :

[TV10-516R](#) [017667013](#) [RF727](#) [2CMA100178R1000](#) [5SDD 92Z0401](#) [ESV14-BS](#) [EZS-21-250](#) [F204AC-40/0.03](#) [F362-25/0.03](#)

[GJL1211001R0011](#) [GJL1211201R8000](#) [GJL1211501R8000](#) [GJL1213001R0017](#) [GJL1213001R0101](#) [GJL1311001R0101](#) [GJL1311001R8010](#)

[GJL1311201R0001](#) [GJL1313001R0011](#) [GJL1313001R0101](#) [GJL1317201R0001](#) [AF09-30-01-11](#) [AF460-30-11-68](#) [1455](#) [EF45-30](#) [ERG297](#)

[HSC2-20](#) [1SAM201904R1001](#) [1SAM350000R1003](#) [1SAZ721201R1009](#) [1SAZ721201R1014](#) [1SAZ721201R1025](#) [1SFA611101R1002](#)

[1SFA611130R1103](#) [1SFA611131R1101](#) [1SFA611143R1101](#) [1SFA611202R1108](#) [1SFA611203R1108](#) [1SFA611215R1001](#)

[1SFA611216R1108](#) [1SFA611285R1002](#) [1SFA611702R6006](#) [1SFA616162R1025](#) [1SFA619100R3015](#) [1SVR730020R0200](#) [IPC4111](#)

[OS30FACC12](#) [OS60GJ03](#) [OVR1N160277PS](#) [OXC1L48](#) [254](#)