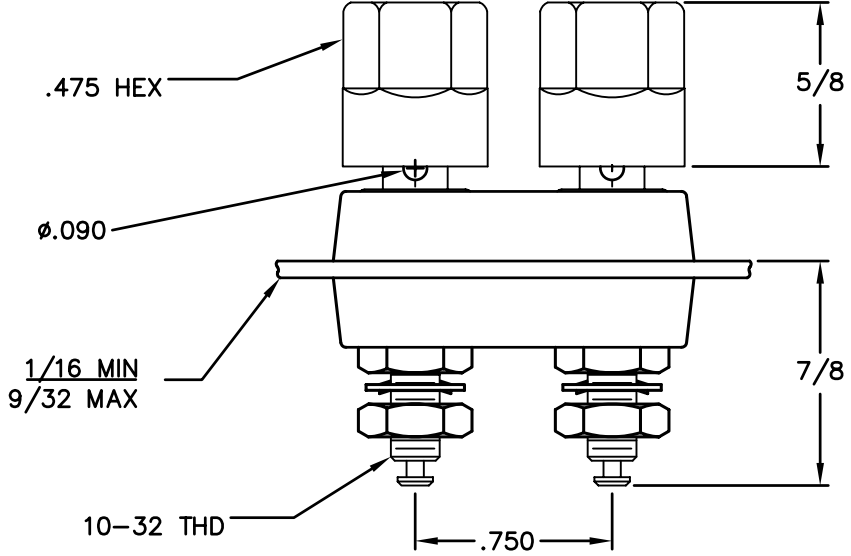
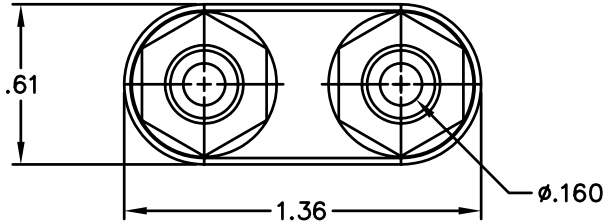


REVISIONS				
SYM	DESCRIPTION	REVISED BY	DATE	APPR



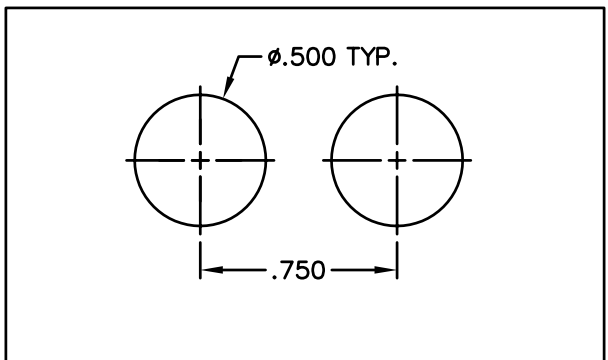
NOTES:

MATERIAL—

INSULATING PORTIONS: POLYCARBONATE
 BODY: BRASS, TIN FINISH
 HARDWARE: BRASS, NICKEL FINISH

ELECTRICAL—

VOLTAGE: 1000 VDC
 CURRENT: 30 AMPS



MATERIAL: SEE NOTES			FINISH: TIN		<h1>ABBATRON</h1> <p>Electronic Connectors and Hardware 632 Arch Street, Meadville, Pa. 16335</p>					
DIMENSIONAL TOLERANCES UNLESS OTHERWISE SPECIFIED			TITLE: 269XX					SIZE	DRAWING NUMBER	ISSUE
.XX	.XXX	.XXX	DUAL BINDING POST							
---	---	---	10-32 THD							
FRACTIONS			ANGLES		SCALE		B	SD-269	E	
---	---	2:1	DRAWN: T. LORD		DATE: 2/27/04					
HEAT TREAT: ---			CHECKED: T. LORD		DATE: 2/27/04					
PLOT SCALE: 1=1			APPROVED: T. LORD		DATE: 2/27/04					

X-ON Electronics

Largest Supplier of Electrical and Electronic Components

Click to view similar products for [Test Sockets](#) category:

Click to view products by [Abbatron](#) manufacturer:

Other Similar products are found below :

[AXS-5032-04-02](#) [AXS-3225-04-06](#) [AXS-7050-04-12](#) [5662](#) [BP30-10-B](#) [BP30GNN-1 PKG](#) [BP30-10Y-1 PKG](#) [AXS-7050-04-01](#) [AXS-5032-04-06](#) [AXS-2520-04-01](#) [AXS-5032-04-04](#) [930308101](#) [931714101](#) [15.0084-21](#) [563-0500](#) [20.1020-21](#) [20-313137](#) [20-313139](#) [20-313144](#) [20-313140](#) [20-313143](#) [22.1042](#) [+ 22.2370-22](#) [23.1010-23, 24, 25, 26, 27](#) [24.0160-1+25.0035](#) [24.0160-4+25.0035](#) [24.116-22](#) [5281](#) [5279](#) [450-3704-01-06-00](#) [AXS-3225-04-04](#) [AXS-3225-04-10](#) [AXS-7550-06-03](#) [AXS-7550-06-05](#) [269RB](#) [2713BB](#) [BP30BN-1 PKG](#) [BP30RN-1 PKG](#) [571-0200](#) [450-3422-01-06-00](#) [450-3888-01-04-00](#) [BP30GP10](#) [571-0400](#) [571-0600](#) [66.9131-23](#) [66.9427-22](#) [BP21-2BRN-B PKG](#) [930058104](#) [930103102](#) [930103188](#) [930103700](#)