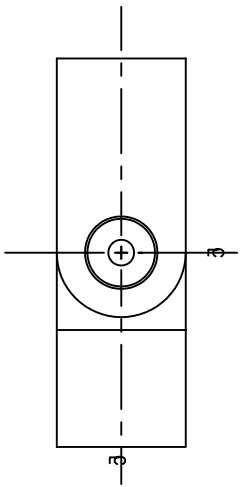
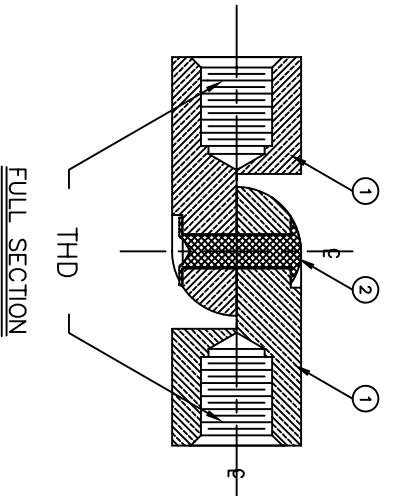
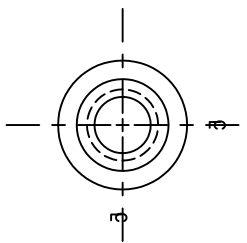
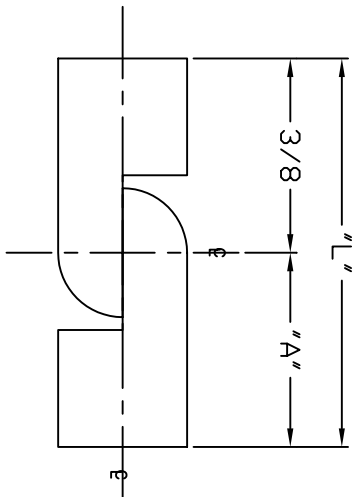
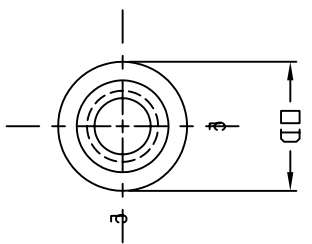
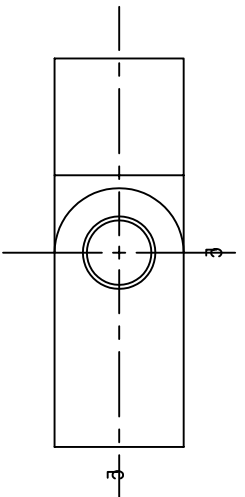


| REVISIONS |             | REVISED | DATE | APPROVED |
|-----------|-------------|---------|------|----------|
| SYM       | DESCRIPTION |         |      |          |



| PART# | "L" | OD   | THD  | "A" |
|-------|-----|------|------|-----|
| 3021  | 3/4 | 3/16 | 4-40 | 3/8 |
| 3022  | 1   | 3/16 | 4-40 | 5/8 |
| 3023  | 3/4 | 1/4  | 6-32 | 3/8 |
| 3024  | 1   | 1/4  | 6-32 | 5/8 |
| 3025  | 3/4 | 1/4  | 8-32 | 3/8 |
| 3026  | 1   | 1/4  | 8-32 | 5/8 |

| BILL OF MATERIALS |      |               |           |
|-------------------|------|---------------|-----------|
| DET.              | QTY. | DESCRIPTION   | MATERIAL  |
| 1                 | 2    | STANDOFF BODY | BRASS     |
| 2                 | 1    | RIVET         | STEEL     |
|                   |      |               | BRIGHT TN |
|                   |      |               | ZINC      |

| MATERIAL                   | SEE BOM | FINISH              | SEE BOM        |
|----------------------------|---------|---------------------|----------------|
| DIMENSIONAL TOLERANCES     |         |                     |                |
| UNLESS OTHERWISE SPECIFIED |         |                     |                |
| XX                         | XXX     |                     |                |
| ---                        | ---     |                     |                |
| FRACCTIONS                 | ANGLES  | SCALE               |                |
| ---                        | ---     | 5:1                 |                |
| HEAT TREAT                 |         |                     |                |
| PLOT SCALE                 | 1=1     |                     |                |
| TITLE                      |         | DRAWN BY            |                |
| 3021-3026                  |         | E. MCKINNEY         |                |
| FEMALE SWIVEL              |         | DATE 7-11-91        |                |
| STANDOFF ASSEMBLY          |         | CHECKED E. MCKINNEY |                |
|                            |         | DATE 7-11-91        |                |
|                            |         | APPROVED D. MILLER  |                |
|                            |         | DATE 7-18-91        |                |
|                            |         | SIZE                | DRAWING NUMBER |
|                            |         | C                   | SD: 3021-3026  |
|                            |         |                     | ISSUE          |
|                            |         |                     | A              |

**ABBATRON**  
Electronic Connectors and Hardware  
13690 S. MOSERTOWN RD  
MEADVILLE, PA 16335

## X-ON Electronics

Largest Supplier of Electrical and Electronic Components

*Click to view similar products for [Gate Drivers](#) category:*

*Click to view products by [Abbatron](#) manufacturer:*

Other Similar products are found below :

[00028](#) [00053P0231](#) [8967380000](#) [56956](#) [CR7E-30DB-3.96E\(72\)](#) [57.404.7355.5](#) [LT4936](#) [57.904.0755.0](#) [5801-0903](#) [5803-0901](#) [5811-0902](#)  
[5813-0901](#) [58410](#) [00576P0030](#) [00581P0070](#) [5882900001](#) [00103P0020](#) [00600P0005](#) [00-9050-LRPP](#) [00-9090-RDPP](#) [5951900000](#) [01-](#)  
[1003W-10/32-15](#) [LTI LA6E-1S-WH-RC-FN12VXCR1](#) [0131700000](#) [00-2240](#) [LTP70N06](#) [LVP640](#) [0158-624-00](#) [5J0-1000LG-SIL](#) [020017-13](#)  
[LY1D-2-5S-AC120](#) [LY2-0-US-AC120](#) [LY2-US-AC240](#) [LY3-UA-DC24](#) [00-5150](#) [00576P0020](#) [00600P0010](#) [LZNQ2M-US-DC5](#) [LZNQ2-](#)  
[US-DC12](#) [LZP40N10](#) [00-8196-RDPP](#) [00-8274-RDPP](#) [00-8275-RDNP](#) [00-8609-RDPP](#) [00-8722-RDPP](#) [00-8728-WHPP](#) [00-8869-RDPP](#) [00-](#)  
[9051-RDPP](#) [00-9091-LRPP](#) [00-9291-RDPP](#)