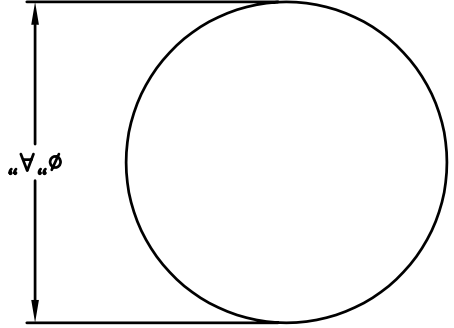
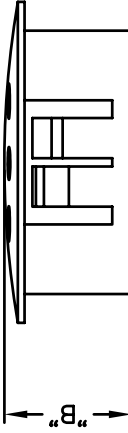
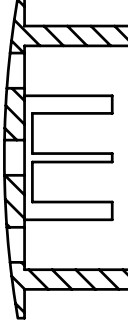
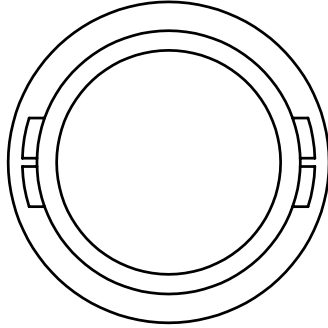


PART#	CHASSIS HOLE	"A"	MAX. CHASSIS THICKNESS	"B"
3089	1/4	5/16	1/16	5/16
3090	5/16	3/8	1/16	5/16
3091	3/8	15/32	1/8	13/32
3092	1/2	37/64	1/8	13/32
3093	5/8	23/32	1/8	13/32
3094	3/4	59/64	1/8	13/32
3095	1	1-13/64	1/8	29/64
3096	1-1/8	1-7/32	1/8	29/64
3097	1-1/4	1-3/8	1/8	29/64
3098	1-3/8	1-1/2	1/8	29/64
3099	1-1/2	1-43/64	1/8	29/64



MATERIAL: NYLON TYPE 6/6		FINISH: -	
DIMENSIONAL TOLERANCES UNLESS OTHERWISE SPECIFIED			
XX		XXX	
±.015		---	
FRACTIONS		ANGLES	
±1/64		±1°	
HEAT TREATS: ---		SCALE: 2X	
PLOT SCALE: 1=1		CHECKED: T.LORD	
APPROVED: T.LORD		DATE: 7/23/09	
DRAWN: T.LORD		DATE: 7/23/09	
TITLE: 3089-3099 HOLE PLUG		NYLON	
SIZE: B		DRAWING NUMBER: SD: 3089-3099	
ISSUE: A		13680 S. MOSERTOWN RD MEADVILLE, PA 16335 Electronic Connectors and Hardware	

REVISIONS		
SYM	DESCRIPTION	DATE

X-ON Electronics

Largest Supplier of Electrical and Electronic Components

Click to view similar products for [Coin Cell Battery Holders](#) category:

Click to view products by [Abbatron](#) manufacturer:

Other Similar products are found below :

[3035](#) [1026](#) [1059](#) [1060](#) [1063](#) [1065](#) [1068](#) [1093](#) [D2](#) [D3](#) [46400000](#) [BC-0403](#) [BH-121-1B](#) [BH-1/2AA-2A](#) [BH-131A](#) [BH-3101A](#) [BH-3103B](#)
[BH-311-1A](#) [BH-311-1D](#) [BH-321-1B](#) [BH-321-1D](#) [BH-331-3D](#) [BH-331P](#) [BH-333A](#) [BH-341-1P](#) [BH-342-1A](#) [BH-351A](#) [BH-383A](#) [BH-421A](#)
[BH-422A](#) [BH-425A](#) [BH-431-1B](#) [BH-463A](#) [BH-511A](#) [BHC-18650-1P](#) [46300000](#) [46600000](#) [1058TR](#) [SBH-321-1AS](#) [SBH-331A](#) [SBH-341-](#)
[1A](#) [SBH-341-AS](#) [SBH-421-1A](#) [SBH-431-1AS](#) [SBH-441A](#) [SBH-9VA](#) [BH-121-1A](#) [BHC-18650-1A](#) [SBH-421-1AS](#) [SBH-441AS](#)