

ABBATRON

Premier Supplier of Electronic Hardware

HH Smith

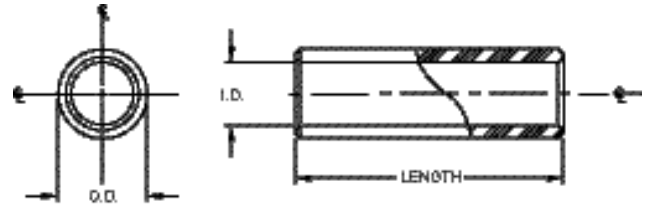
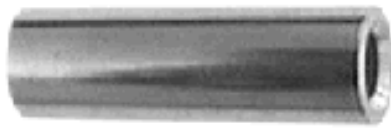
Custom Capabilities | Test Accessories | Plugs, Jacks, Posts | Connectors | Hardware | Spacers/Standoffs

- [Home](#)
- [About](#)
- [Abbatron](#)
- [Products](#)
- [Locate](#)
- [Distributor](#)
- [or](#)
- [Representative](#)
- [Contact Us](#)
- [Request](#)
- [Information](#)
- [Site Map](#)

Brass Spacers

Brass spacers stand up moderately well to extreme environmental conditions, including heat and humidity. Nickel plating, easily soldered with activated flux, offers further strength against difficult ambient conditions.

- Alternative finishes available
- Other sizes available in quantity upon request
- Call Abbatron's engineering services for special application parts or materials



Inventory Search

Cross Reference

UPS Tracking

632 Arch Street, POB
726 Meadville, PA 16335
USA 814-724-6440
[Contact Webmaster](#)

© June 6, 2005

Length		O.D.	I.D.				
			#2	#4	#6	#8	#10
.125	1/8	3/16	9000	9015			
		1/4		8700	8701	8702	
		5/16			9372A	9373A	9374A
		3/8				8732	9375A
.187	3/16	3/16	9001	9016			
		1/4		8703	8704	8705	
		5/16			9372B	9373B	9374B
		3/8				8735	9375B
.250	1/4	3/16	9002	9017			
		1/4		2340	2100	2105	
		5/16			9372C	9373C	9374C
		3/8				2115	9375C
.312	5/16	3/16	9003	9018			
		1/4		8706	8707	8708	
		5/16			9372D	9373D	9374D
		3/8				8738	9375D
.375	3/8	3/16	9004	9019			
		1/4		2341	2101	2106	
		5/16			9372E	9373E	9374E
		3/8				2116	9375E
.437	7/16	3/16	9005	9020			
		1/4		8709	8710	8711	
		5/16			9372F	9373F	9374F
		3/8				8741	9375F
.500	1/2	3/16	9006	9021			
		1/4		2342	2102	2107	
		5/16			9372G	9373G	9374G
		3/8				2117	9375G
.562	9/16	3/16	9007	9022			
		1/4		8712	8713	8714	
		5/16			9372H	9373H	9374H
		3/8				8744	9375H
.625	5/8	3/16	9008	9023			
		1/4		8715	8716	8717	
		5/16			9372J	9373J	9374J
		3/8				8747	9375J
.687	11/16	3/16	9009	9024			
		1/4		8718	8719	8720	
		5/16			9372K	9373K	9374K
		3/8				8750	9375K
.750	3/4	3/16	9010	9025			
		1/4		2343	2103	2108	
		5/16			9372L	9373L	9374L
		3/8				2118	9375L
.812	13/16	3/16	9011	9026			
		1/4		8721	8722	8723	
		5/16			9372M	9373M	9374M
		3/8				8753	9375M
.875	7/8	3/16	9012	9027			
		1/4		8724	8725	8726	
		5/16			9372N	9373N	9374N
		3/8				8756	9375N
.937	15/16	3/16	9013	9028			
		1/4		8727	8728	8729	
		5/16			9372P	9373P	9374P
		3/8				8759	9375P
1.000	1	3/16	9014	9029			
		1/4		2344	2104	2109	
		5/16			9372Q	9373Q	9374Q
		3/8				2119	9375Q

1.000	1	5/16			9372Q	9373Q	9374Q
		3/8				2119	9375Q



[home](#) | [about abbatron](#) | [products](#) | [locate distributor or representative](#) | [contact us](#) | [request information](#) | [site map](#)

X-ON Electronics

Largest Supplier of Electrical and Electronic Components

Click to view similar products for [Switching Power Supplies](#) category:

Click to view products by [Abbatron](#) manufacturer:

Other Similar products are found below :

[70841011](#) [73-551-0005](#) [AAD600S-4-OP](#) [R22095](#) [KD0204](#) [9021](#) [S-15F-12](#) [LDIN100150](#) [LPM000-BBAR-01](#) [LPX17S-C](#) [EVS57-10R6/R](#)
[FDC40-24S12](#) [FP80](#) [FRV7000G](#) [22929](#) [CQM1IA121](#) [40370121900](#) [VI-PU22-EXX](#) [40370121910](#) [LDIN5075](#) [432703037161](#) [WRB01X-U](#)
[LPX140-C](#) [08-30466-1040G](#) [09-160CFG](#) [70841004](#) [70841025](#) [VPX3000-CBL-DC](#) [VI-LUL-IU](#) [LPM000-BBAR-05](#) [LPM000-BBAR-08](#)
[LPM124-OUTA1-48](#) [LPM000-BBAR-07](#) [LPM109-OUTA1-10](#) [LPM616-CHAS](#) [08-30466-1055G](#) [08-30466-2175G](#) [DMB-EWG](#) [TVQF-](#)
[1219-18S](#) [6504-226-2101](#) [CQM1IPS01](#) [XPFM201A+](#) [MAP80-4000G](#) [LFP300F-24-TY](#) [SMP21-L20-DC24V-5A](#) [VI-MUL-ES](#) [08-30466-](#)
[0065G](#) [CME240P-24](#) [VI-RU031-EWWX](#) [08-30466-0028G](#)