

# LOW FREQUENCY REFLOWABLE CYLINDRICAL WATCH CRYSTAL



6.0 x  $\phi$ 1.9mm

**AB26TRB**

Pb in high temperature solder  
(exempt 7(a) per 2015/863/EU Annex)

**RoHS**  
Compliant

## FEATURES:

- Formed leads for low cost SMD type
- Excellent shock resistance
- Reflow Capable
- Low cost for consumer applications
- IR reflow capable

## APPLICATIONS:

- Real time clock
- Measuring instruments
- Blue-tooth and wireless applications

## STANDARD SPECIFICATIONS:

Parameters	Minimum	Typical	Maximum	Units	Notes
Center Frequency		32.768		kHz	
Operating Temperature	-40		+85	°C	
Turnover Temperature	+20	+25	+30	°C	
Storage Temperature	-55		+125	°C	
Frequency Tolerance @+25°C	-20		+20	ppm	See options
Frequency Coefficient (B)		-0.035±0.01		ppm/°C <sup>2</sup>	
Equivalent series resistance (R1)		35	50	kΩ	@25°C
Shunt capacitance (C0)		1.35		pF	
Load capacitance (CL)		12.5		pF	See options
Drive Level			1	μW	
Quality Factor		70,000			
Aging	-3		+3	ppm	@25°C±3°C First year
Insulation Resistance	500			MΩ	@ 100Vdc ± 15V

## OPTIONS & PART IDENTIFICATION: (Left blank if standard)

AB26TRB-32.768kHz -  -  -

Load Capacitance (pF)
Blank: 12.5pF
6: 6pF
10: 10pF

Freq. Tolerance
Blank: ± 20 ppm
1: ± 10 ppm
7: ± 15 ppm

Packaging
Blank: Bulk
T: Tape & Reel

# LOW FREQUENCY REFLOWABLE CYLINDRICAL WATCH CRYSTAL



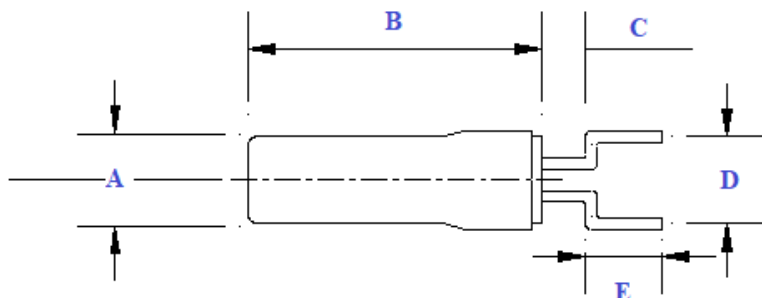
6.0 x  $\phi$ 1.9mm

AB26TRB

Pb in high temperature solder  
(exempt 7(a) per 2015/863/EU Annex)

RoHS  
Compliant

## OUTLINE DIMENSIONS:

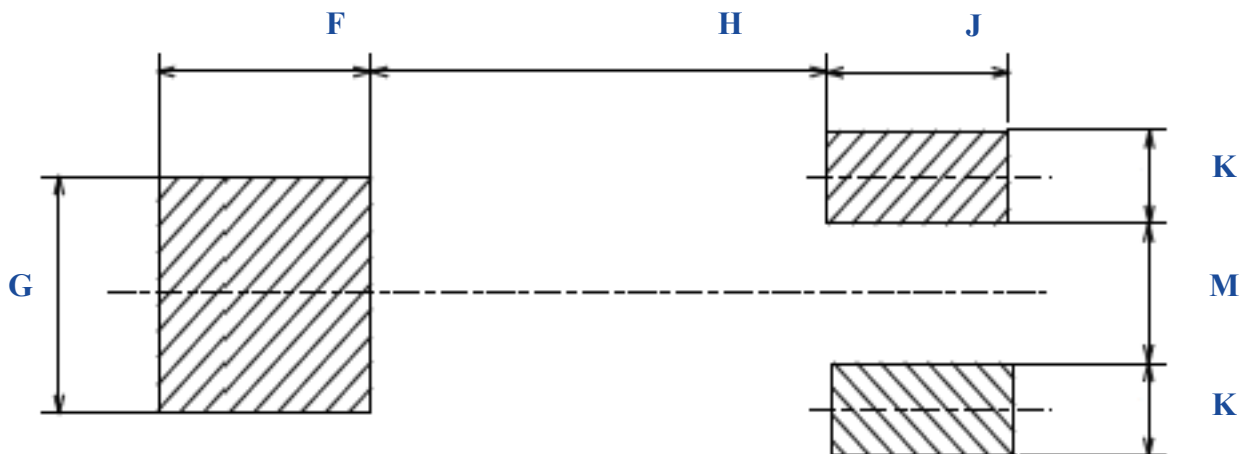


Dimension Table	
A	$\text{Ø } 1.9 \pm 0.1$
B	$6.0 \pm 0.2$
C	1.0
D	$2.54 \pm 0.3$
E	$2.0 \pm 0.3$

### NOTE:

The body/can of the component is not to be soldered. To do so may cause damage to the crystal.

Use Adhesive/Bonding Materials (i.e. Rubber Adhesive, Epoxy, etc) to affix the component body to the PCB.



F	G	H	J	K	M
2.5	2.5	5.25	2.5	1.0	1.5

Dimensions: mm

# LOW FREQUENCY REFLOWABLE CYLINDRICAL WATCH CRYSTAL



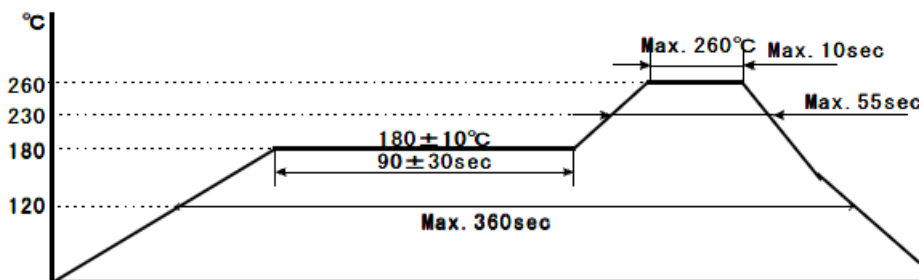
6.0 x  $\phi$ 1.9mm

AB26TRB

Pb in high temperature solder  
(exempt 7(a) per 2015/863/EU Annex)

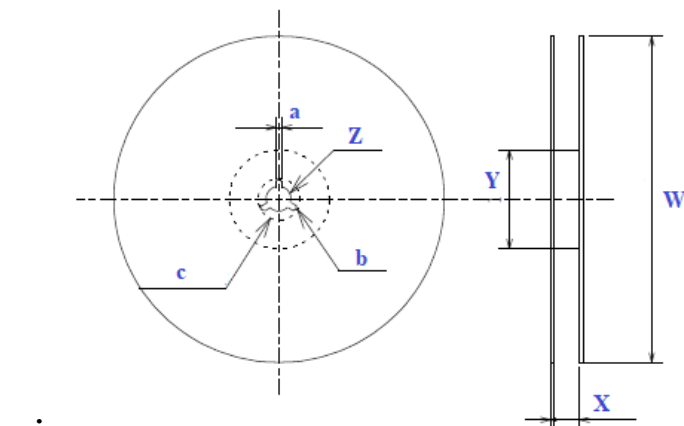
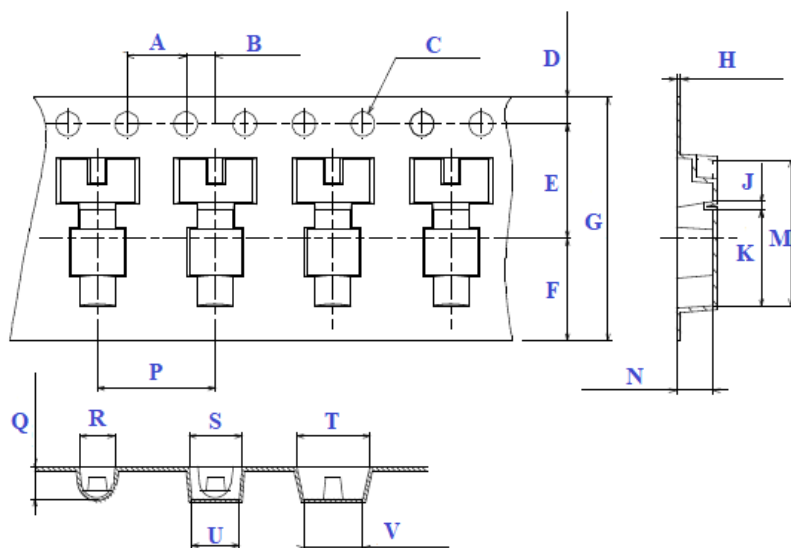
RoHS  
Compliant

## REFLOW PROFILE:



## TAPE & REEL:

Packaging: 2000pcs/reel



Dimensions: mm

### Dimension Table

A	4.0 ± 0.1
B	2.0 ± 0.1
C	Ø 1.5 ± 0.1
D	1.75 ± 0.1
E	7.5 ± 0.1
F	(6.75)
H	0.3 ± 0.05
G	16 ± 0.3
J	0.6
K	6.3 ± 0.1
M	9.4
N	2.15 ± 0.1
P	8.0 ± 0.1
Q	2.15 ± 0.1
R	2.05
S	3.6
T	5.0
U	3.2
V	4.0 ± 0.1
W	Ø 330
X	19.5
Y	Ø 100
Z	Ø 13
a	2.0
b	R1.0
c	Ø 21 ± 0.8

**ATTENTION:** Abracon LLC's products are COTS – Commercial-Off-The-Shelf products; suitable for Commercial, Industrial and, where designated, Automotive Applications. Abracon's products are not specifically designed for Military, Aviation, Aerospace, Life-dependent Medical applications or any application requiring high reliability where component failure could result in loss of life and/or property. For applications requiring high reliability and/or presenting an extreme operating environment, written consent and authorization from Abracon LLC is required. Please contact Abracon LLC for more information.

## X-ON Electronics

Largest Supplier of Electrical and Electronic Components

*Click to view similar products for [Crystals](#) category:*

*Click to view products by [ABRACON](#) manufacturer:*

Other Similar products are found below :

[MC405 32.0000K-R3:PURE SN](#) [7B-27.000MBBK-T](#) [MP1-8.0 99-BU](#) [9B-15.360MBBK-B](#) [PTX-A2JM-10.000M](#) [9C-7.680MBBK-T](#) [H10S-12.000-18-EXT-TR](#) [R38-32.768-12.5-5PPM-NPB](#) [BTD1062E05A-513](#) [21U15A-21.4MHZ](#) [RTX-781DF1-S-20.950](#) [LFXTAL066198Cutt](#) [9C-14.31818MBBK-T](#) [A-11.000MHZ-27](#) [SPT2A-.032768B](#) [SPT2A.032768G](#) [SSPT7F-9PF20-R](#) [FX325BS-38.88EEM1201](#) [MP-1-25.000MHZ-3L](#) [MP-1-6.000MHZ](#) [LFXTAL065253Cutt](#) [LFXTAL066431Cutt](#) [XT9S20ANA14M7456](#) [XT9SNLANA16M](#) [646G-24-2](#) [7B-30.000MBBK-T](#) [6504-202-1501](#) [6526-202-1501](#) [BTJ120E02C](#) [SG636PCE-20.000MC](#) [3404](#) [CM315D32768EZFT](#) [C1E-24.000-7-2020-R](#) [C1E-19.200-12-1530-X-R](#) [C1E-16.000-12-1530-X-R](#) [ABM11-16.000MHZ-9-B1U-T](#) [FL5000014](#) [EUCA18-3.1872M](#) [425F35E027M0000](#) [17196](#) [MS3V-T1R-32.768kHz-7pF-20PPM-TA-QC-Au](#) [VXM7-1C1-16M000](#) [MS1V-T1K-32.768kHz-10pF-20PPM-TA-QC-Au](#) [MS1V-T1K-32.768kHz-12.5pF-20PPM-TA-QC-Au](#) [MS3V-T1R-32.768kHz-9pF-20PPM-TA-QC-Au](#) [17000](#) [17301](#) [16875](#) [ECS-80-18-30B-JEM-TR](#)