

# Low Profile Dual Band WiFi Chip Antenna



ACAR0301-SW2



3.05 x 1.60 x 0.55 mm  
RoHS/RoHS II Compliant  
MSL = 1

## Features

- Dual band WiFi 2.4 GHz/5.5 GHz
- Low profile
- Gain of 1.0/2.5 dBi
- Omnidirectional pattern
- Low VSWR of 2.0

## Applications

- WiFi
- Bluetooth
- ISM
- Wearables
- IoT
- AR/VR
- Drones
- Broadband connectivity

## Electrical Characteristics

Item	Spec*		Comments
Working Frequency	2400~2500MHz	5150~5825MHz	Dual 2.4GHz and 5GHz bands
VSWR	2:1	2:1	
Peak Gain (2400~2500MHz)	Typ 1.0 dBi	Typ 2.5 dBi	
Efficiency	75%	80%	
Polarization	Linear		
Impedance	50 $\Omega$		
Operating Temperature	-40°C ~ 85°C		
Storage Temperature	-40°C ~ 85°C		

\* Data collected per Table on standard evaluation board, and under the environmental conditions of +40°C and 0-95% relative humidity.

# Low Profile Dual Band WiFi Chip Antenna

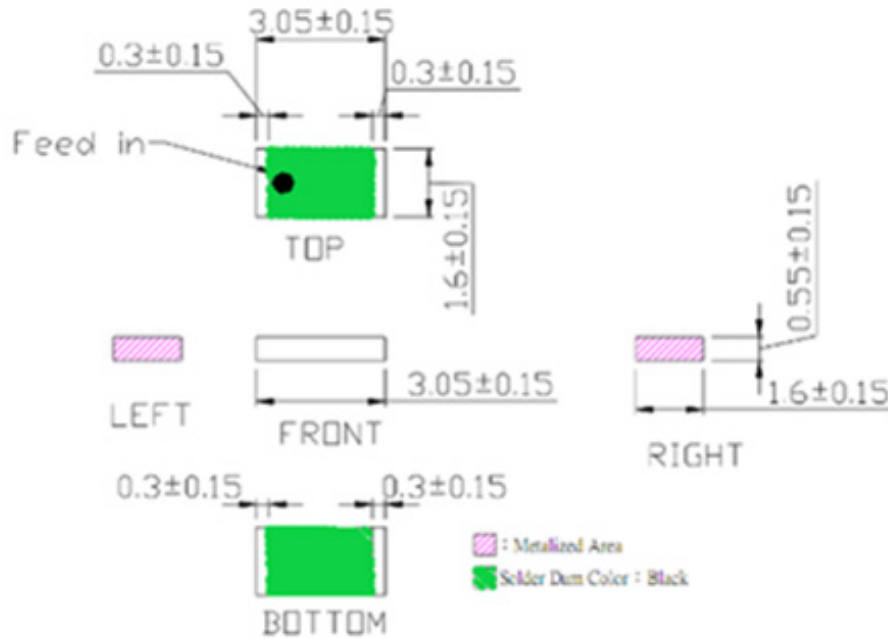


ACAR0301-SW2



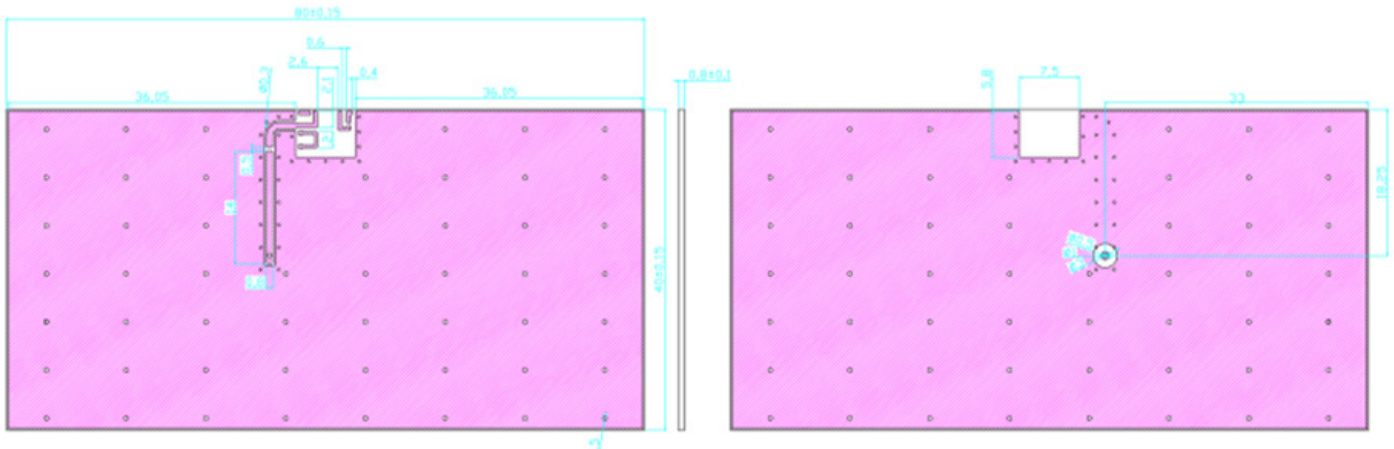
3.05 x 1.60 x 0.55 mm  
RoHS/RoHS II Compliant  
MSL = 1

## Dimensions



Dimensions (mm)

## Evaluation Board and Dimensions



# Low Profile Dual Band WiFi Chip Antenna

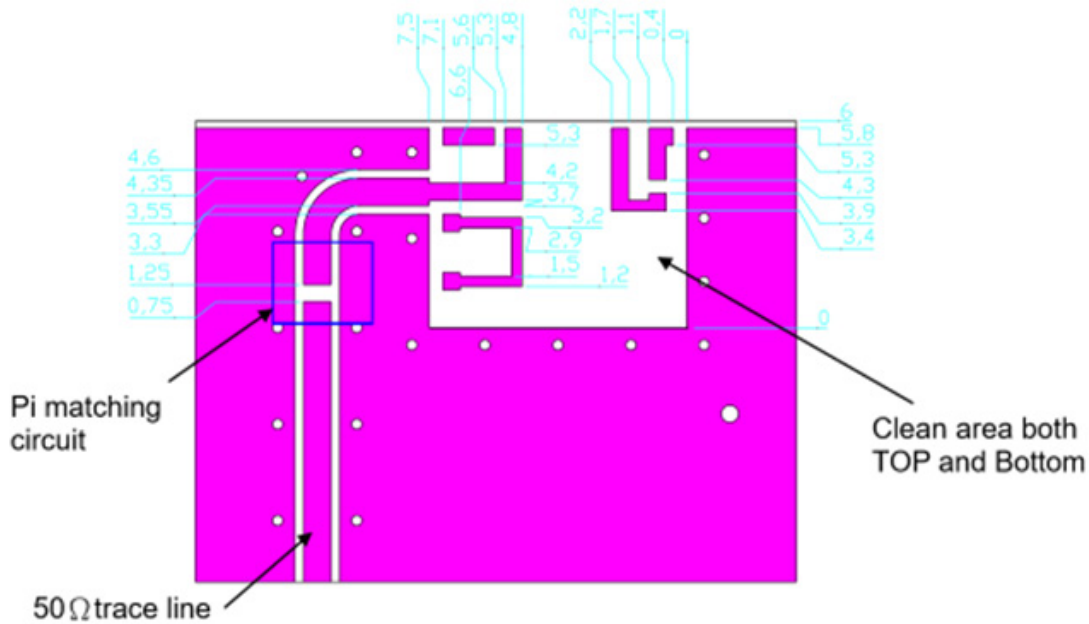


ACAR0301-SW2

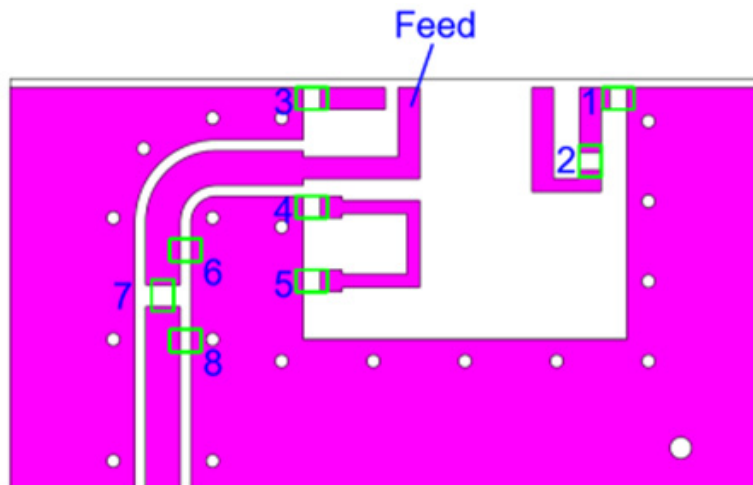


3.05 x 1.60 x 0.55 mm  
RoHS/RoHS II Compliant  
MSL = 1

## Recommended Layout Dimensions



## Recommended Matching Circuit



Matching Components								
No.	1	2	3	4	5	6	7	8
Value	1.2pF	1.0pF	NA	NA	NA	1.2nH	1.0nH	NA

# Low Profile Dual Band WiFi Chip Antenna

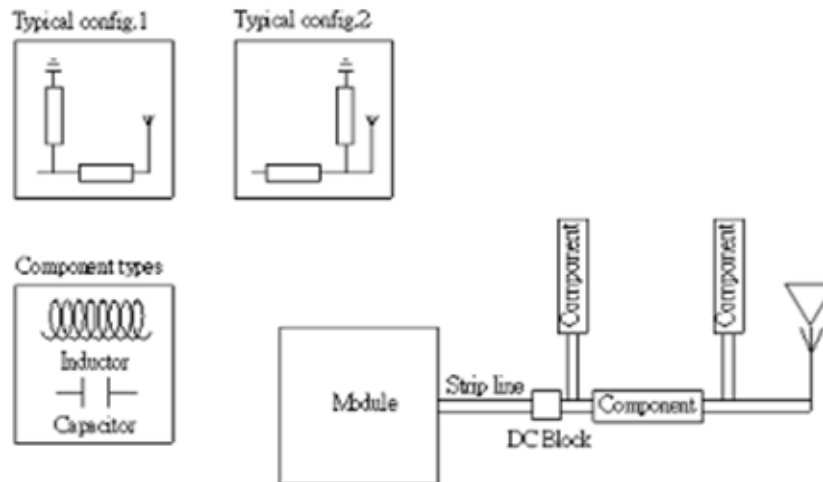


ACAR0301-SW2



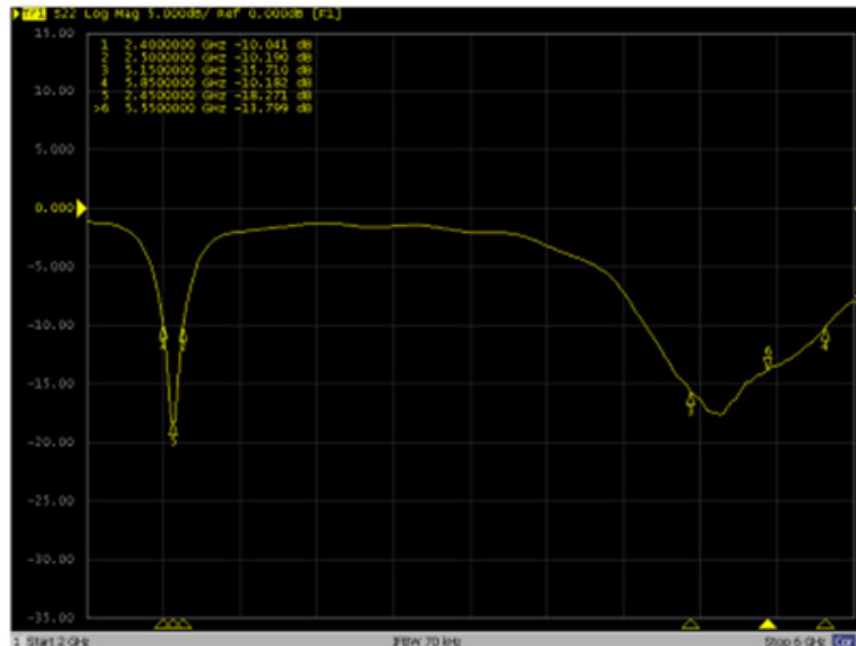
3.05 x 1.60 x 0.55 mm  
RoHS/RoHS II Compliant  
MSL = 1

## Transmission Line Antenna Matching



Matching should be considered using a Pi network where 1, 2 or 3 components could be used. This shall be matched to the transmission line and the ground plane in the design.

## Antenna Response – Return Loss S11



Return Loss	2400MHz	2450MHz	2500MHz	5150MHz	5550MHz	5850MHz
S11	-10.04dB	-18.27dB	-10.19dB	-15.71dB	-13.79dB	-10.18dB

# Low Profile Dual Band WiFi Chip Antenna

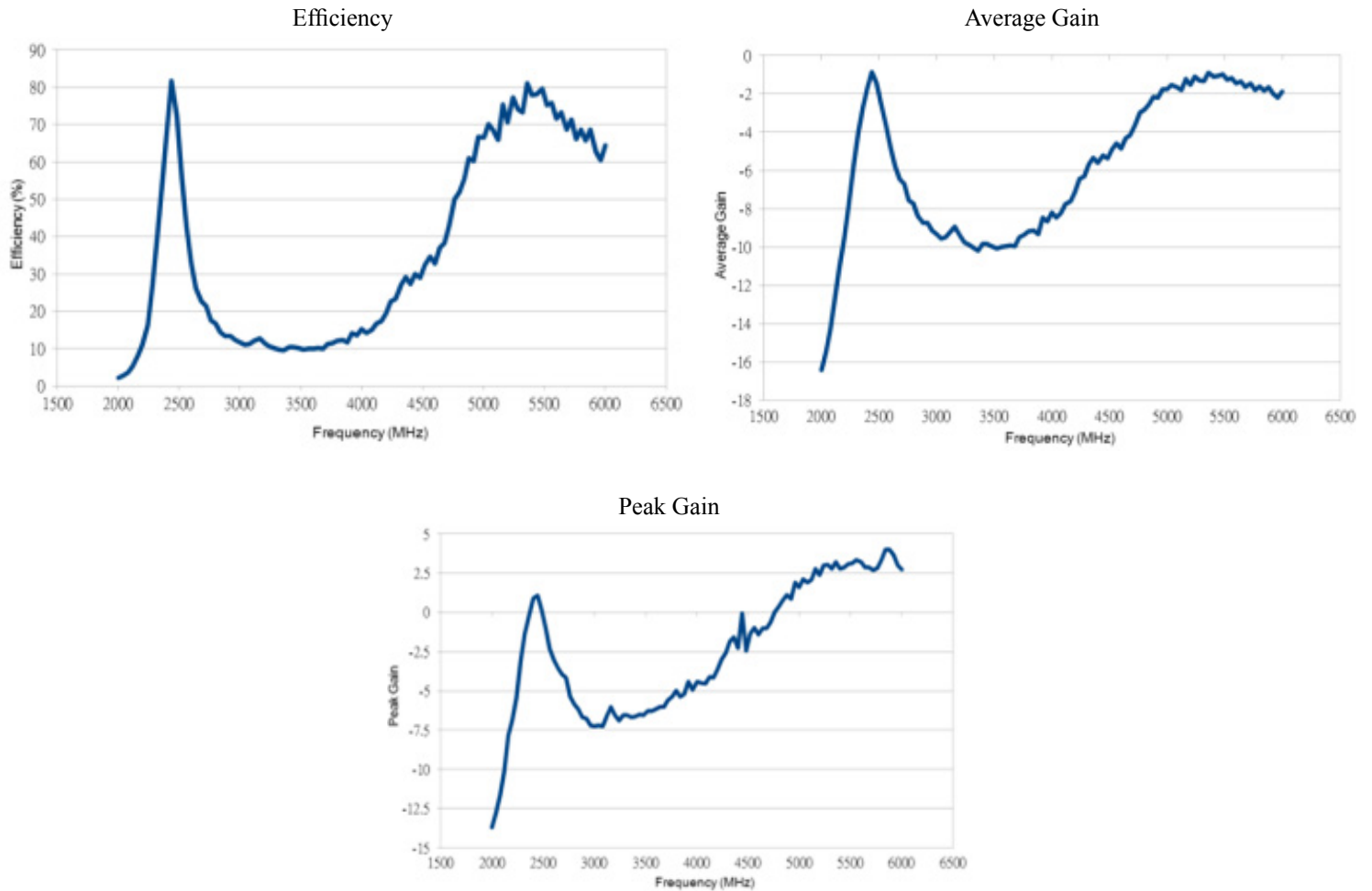


ACAR0301-SW2



3.05 x 1.60 x 0.55 mm  
RoHS/RoHS II Compliant  
MSL = 1

## Antenna Performance



WLAN	2400MHz	2450MHz	2500MHz	5150MHz	5850MHz
Efficiency (%)	68.02	79.73	65.16	75.38	65.62
Average Gain (dB)	-1.67	-0.98	-1.86	-1.22	-1.82
Peak Gain (dB)	0.88	1.05	-0.19	2.56	4.01

# Low Profile Dual Band WiFi Chip Antenna



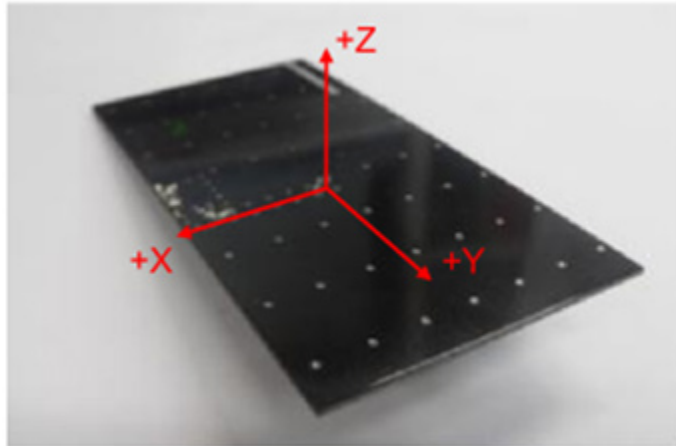
ACAR0301-SW2



3.05 x 1.60 x 0.55 mm  
RoHS/RoHS II Compliant  
MSL = 1

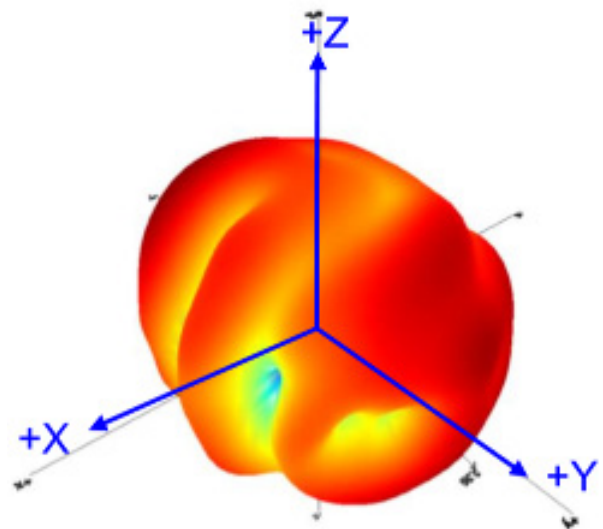
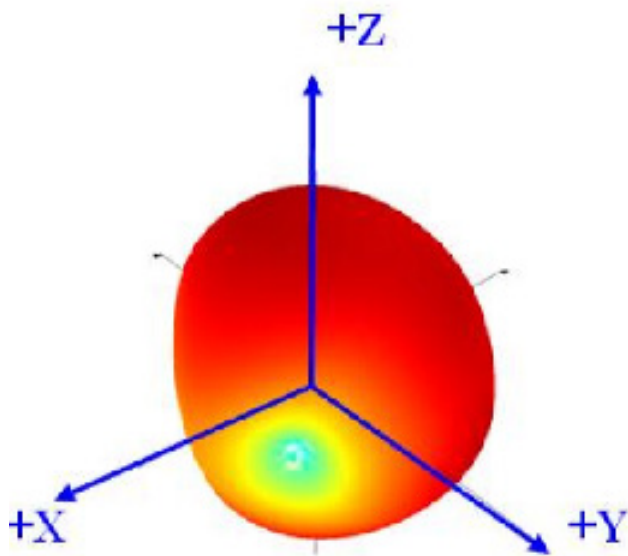
## Antenna 3D Radiation Patterns – Evaluation Board

Coordinates



Radiation patterns 2450MHz (3D)

Radiation patterns 5550MHz (3D)



# Low Profile Dual Band WiFi Chip Antenna



ACAR0301-SW2

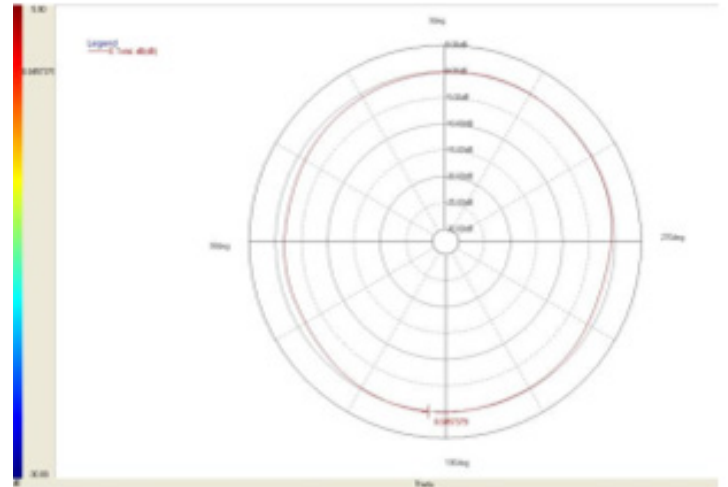
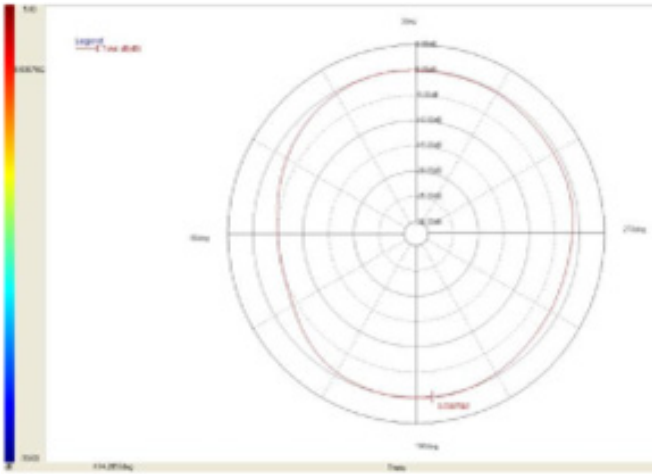


3.05 x 1.60 x 0.55 mm  
RoHS/RoHS II Compliant  
MSL = 1

## Antenna 2D Radiation Patterns @ 2450MHz

2D Radiation Pattern X-Z Plane 2450MHz

2D Radiation Pattern Y-Z Plane 2450MHz



2D Radiation Pattern X-Y Plane 2450MHz



# Low Profile Dual Band WiFi Chip Antenna



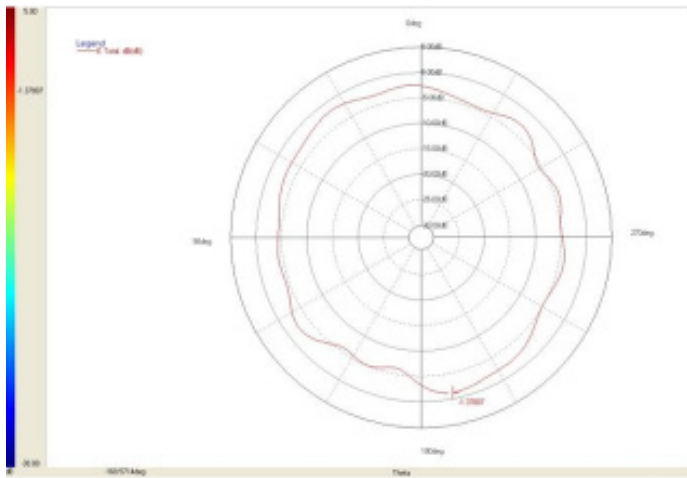
ACAR0301-SW2



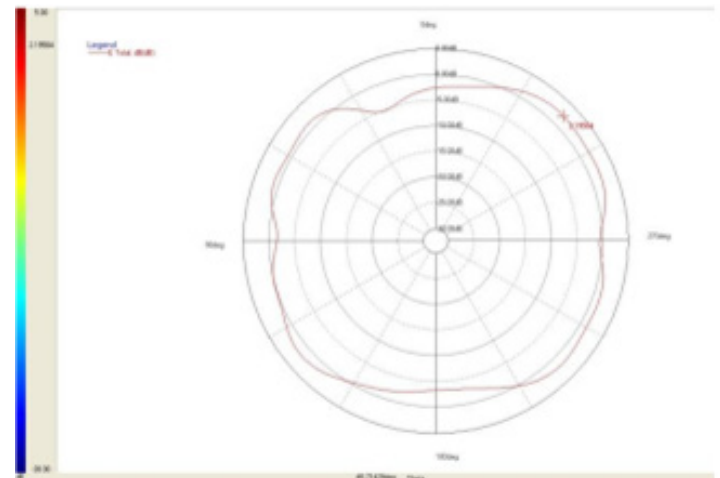
3.05 x 1.60 x 0.55 mm  
RoHS/RoHS II Compliant  
MSL = 1

## Antenna 2D Radiation Patterns @ 5550MHz

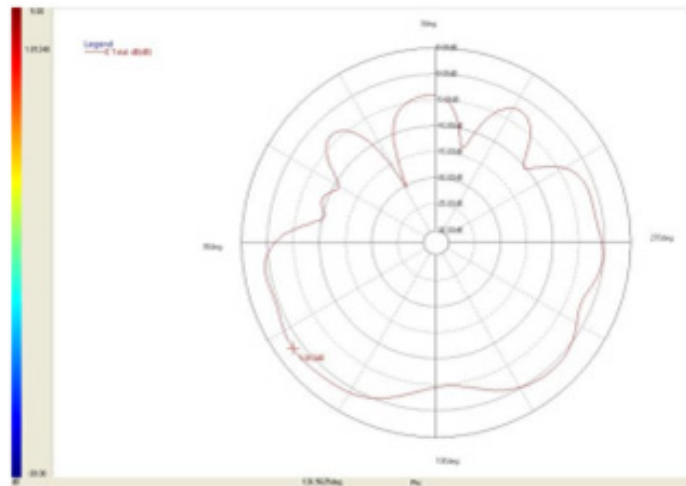
2D Radiation Pattern X-Z Plane 5550MHz



2D Radiation Pattern Y-Z Plane 5550MHz



2D Radiation Pattern X-Y Plane 5550MHz





# Low Profile Dual Band WiFi Chip Antenna



ACAR0301-SW2



3.05 x 1.60 x 0.55 mm  
RoHS/RoHS II Compliant  
MSL = 1

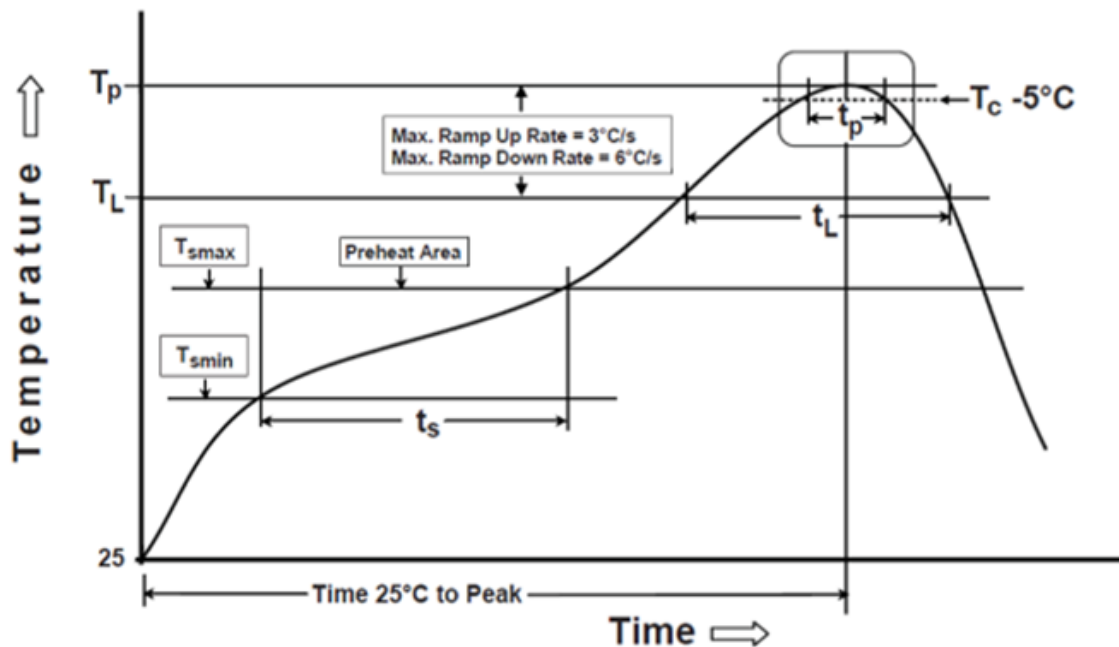
## Reflow Soldering Standard Condition

Abrakon products can be assembled following Pb-free assembly.

According to the Standard IPC/JEDEC J-STD-020C, the temperature profile suggested is as follow:

Phase	Profile Features	Pb-Free Assembly (SnAgCu)
Pre-Heat	-Temperature Min (T <sub>smin</sub> ) -Temperature Max (T <sub>smax</sub> ) -Time (ts) from (T <sub>smin</sub> to T <sub>smax</sub> )	150°C 200°C 60-120 seconds
Ramp-Up	Avg. Ramp-up Rate (T <sub>smax</sub> to TP)	3°C /second(max)
Reflow	-Temperature (TL) -Total Time above TL (t <sub>L</sub> )	217°C 30-100 seconds
Peak	-Temperature (TP) -Time (tp)	260°C 5-10 second RAMP
Ramp-Down	Rate	6°C / second max.
Time from 25°C to Peak Temperature		8 minutes max.
Composition of solder paste		96.5Sn/3Ag/0.5Cu
Solder Paste Model		SHENMAO PF606-P26

Note : All the temperature measure point is on top surface of the component, if temperature over recommend, it will make component surface peeling or damage.



# Low Profile Dual Band WiFi Chip Antenna



ACAR0301-SW2



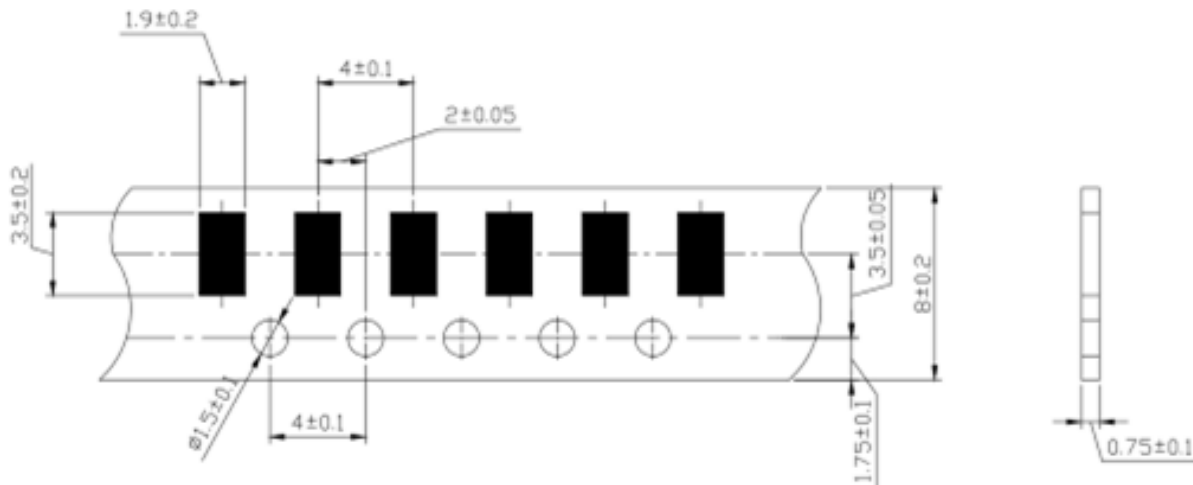
3.05 x 1.60 x 0.55 mm  
RoHS/RoHS II Compliant  
MSL = 1

## Manual Soldering:

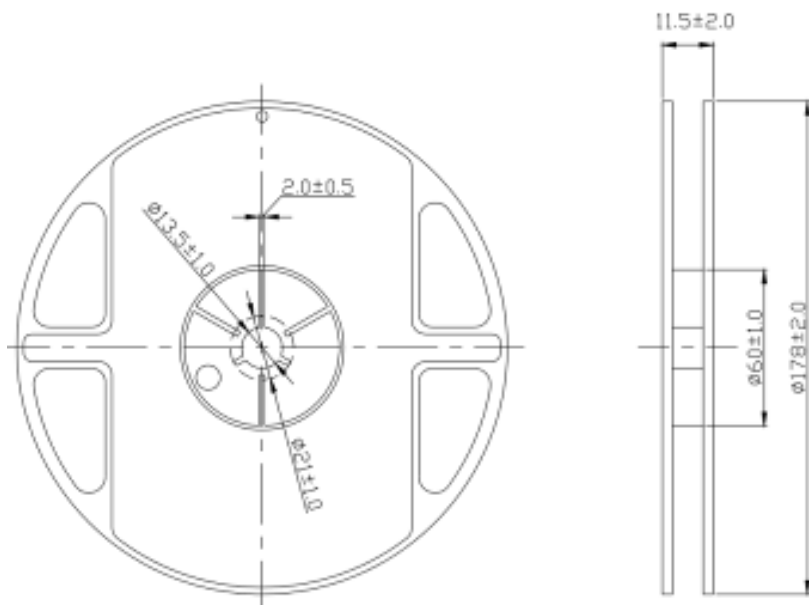
Soldering condition: Soldering iron temperature  $270^{\circ}\text{C} \pm 10^{\circ}\text{C}$ . Apply preheating at  $120^{\circ}\text{C}$  for 2-3 minutes. Finish soldering for each terminal within 3 seconds, if soldering iron over temperature  $270 \pm 10^{\circ}\text{C}$  or 3 seconds, it will make component surface peeling or damage.

## Packaging

Tape Dimensions (mm)



Reel Dimensions (mm)



1 Blister tape to IEC 286-3, polyester.  
2 Pieces/tape: 5000

**ATTENTION:** Abracon LLC's products are COTS – Commercial-Off-The-Shelf products; suitable for Commercial, Industrial and, where designated, Automotive Applications. Abracon's products are not specifically designed for Military, Aviation, Aerospace, Life-dependant Medical applications or any application requiring high reliability where component failure could result in loss of life and/or property. For applications requiring high reliability and/or presenting an extreme operating environment, written consent and authorization from Abracon LLC is required. Please contact Abracon LLC for more information.



5101 Hidden Creek Ln Spicewood TX 78669  
Phone: 512-371-6159 | Fax: 512-351-8858  
For terms and conditions of sales, please visit:  
[www.abracon.com](http://www.abracon.com)

REVISED: 11.09.2018

ABRACON IS  
ISO9001-2015  
CERTIFIED

## X-ON Electronics

Largest Supplier of Electrical and Electronic Components

*Click to view similar products for [Antennas](#) category:*

*Click to view products by [Abracon](#) manufacturer:*

Other Similar products are found below :

[GAN30084EU](#) [930-033-R](#) [GW17.07.0250E](#) [1513563-1](#) [EXE902SM](#) [APAMPG-117](#) [MAF94383](#) [W3908B0100](#) [W6102B0100](#) [YE572113-30RSMM](#) [108-00014-50](#) [66089-2406](#) [A09-F8NF-M](#) [A09-F5NF-M](#) [RGFRA1903041A1T](#) [W3593B0100](#) [W3921B0100](#) [SIMNA-868](#) [SIMNA-915](#) [SIMNA-433](#) [W1044](#) [W1049B090](#) [A75-001](#) [WTL2449CQ1-FRSMM](#) [CPL9C](#) [EXB148BN](#) [0600-00060](#) [TRA9020S3PBN-001](#) [GD5W-28P-NF](#) [MA9-7N](#) [GD53-25](#) [GD5W-21P-NF](#) [EXB144SM](#) [C37](#) [MAF94051](#) [GD35-17P-NF](#) [P1744](#) [MA9-5N](#) [EXD420PL](#) [B1322NR](#) [QWFTB120](#) [MAF94271](#) [MAF94300](#) [GPSMB301](#) [FG4403](#) [AO-AGSM-OM54](#) [5200232](#) [MIKROE-2349](#) [WCM.01.0111](#) [MIKROE-2393](#)