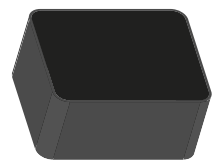


Surface Mount 1227.60MHz SAW Filter



2.0 x 1.6 x 0.75 mm

AFS20A20-1227.60-T3



RoHS/RoHS II compliant

Moisture Sensitivity Level (MSL) – This product is Hermetically Sealed and not Moisture Sensitive - MSL = N/A: Not Applicable

FEATURES:

- 2.0 x 1.6 x 0.75 mm low profile SMT package
- Low Insertion loss
- Excellent selectivity with high out-of-band rejection

APPLICATIONS:

- Wireless Communication
- Remote Control
- Cellular Phones

ELECTRICAL SPECIFICATIONS:

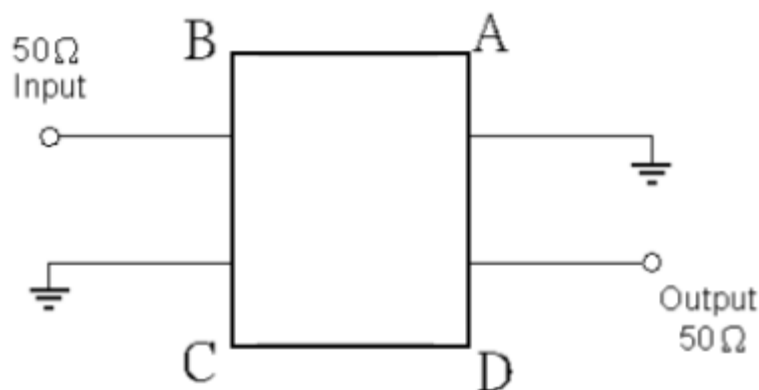
Maximum Ratings

Item	Value
Input Power Level	+20 dBm max.
DC Permissive Voltage	3V DC max.
Operating Temperature Range	-55°C to + 105°C
Storage Temperature Range	-55°C to + 105°C

Parameters	Minimum	Typical	Maximum	Units	Notes
Center Frequency (f_c)		1227.60		MHz	
Insertion Loss (IL)		2.60	3.00	dB	
3dB Bandwidth	20	42		MHz	
Amplitude Ripple		0.80	2.00	dB	1217.60 ~ 1237.6MHz
Group Delay		12	26	ns	1217.60 ~ 1237.6MHz
Group Delay Ripple		23	70	ns	1217.60 ~ 1237.6MHz
Worst-Case Input / Output Return Loss	8.0	10.5		dB	1217.60 ~ 1237.6MHz
Stop-band Attenuation (Referenced to 0.0 dB)	15	20		dB	300MHz ~ 1152MHz
	15	20			1302MHz ~ 1900MHz
	15	21			1900MHz ~ 3000MHz
Source Impedance (Z_s)		50		Ω	See note # 1
Load Impedance (Z_L)		50		Ω	See note # 1

Note #1: No matching network required for operation into 50 Ω 's

TEST CIRCUIT:



Surface Mount 1227.60MHz SAW Filter

AFS20A20-1227.60-T3

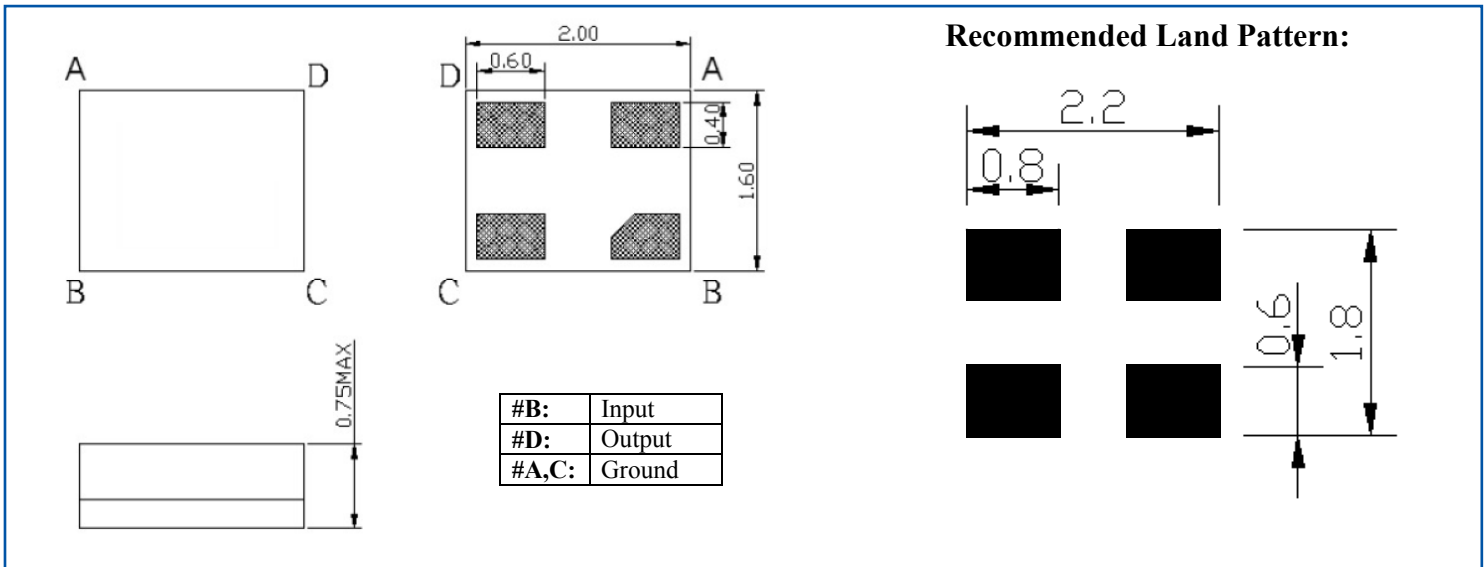


RoHS/RoHS II compliant

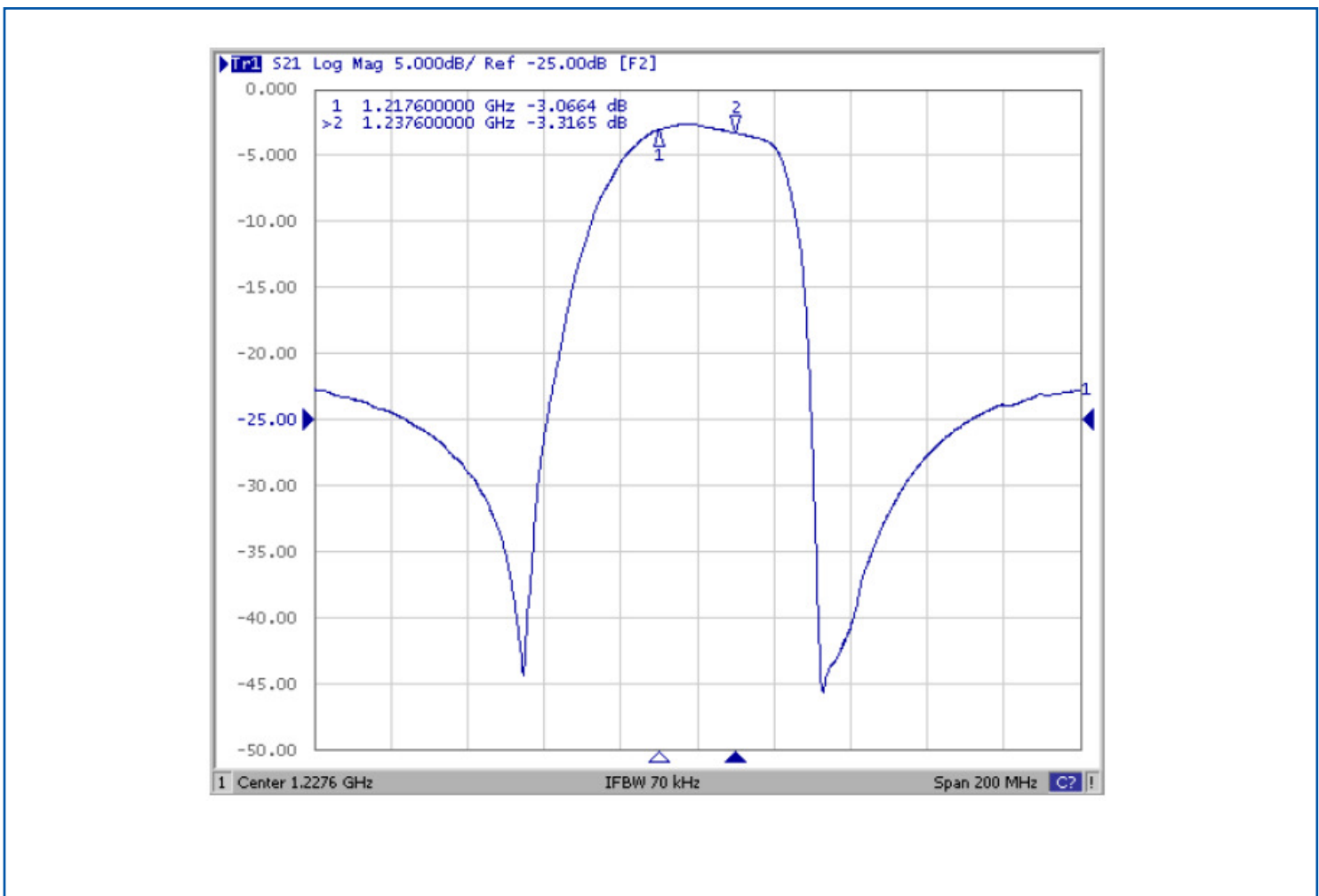


2.0 x 1.6 x 0.75 mm

OUTLINE DIMENSION:



FILTER FREQUENCY RESPONSE (NARROWBAND)



Surface Mount 1227.60MHz SAW Filter

AFS20A20-1227.60-T3

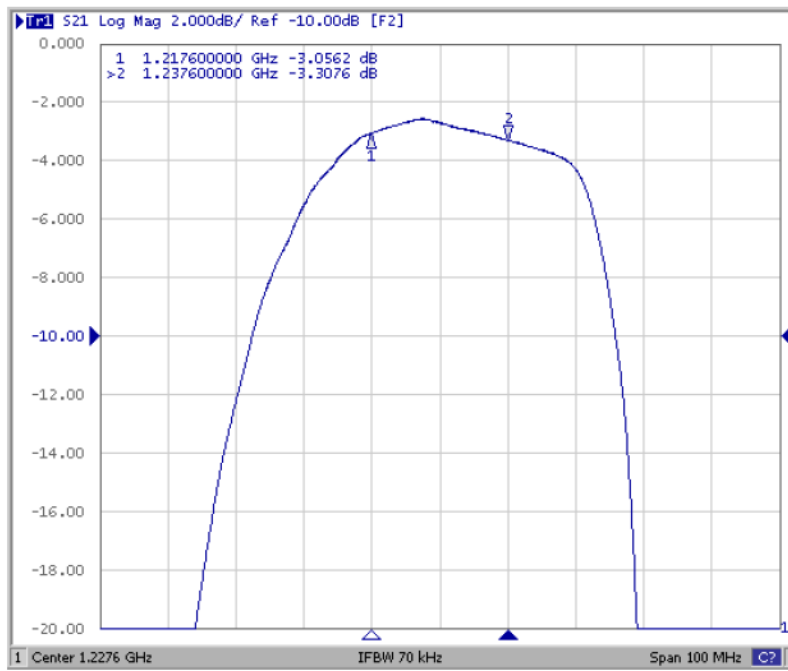


RoHS/RoHS II compliant

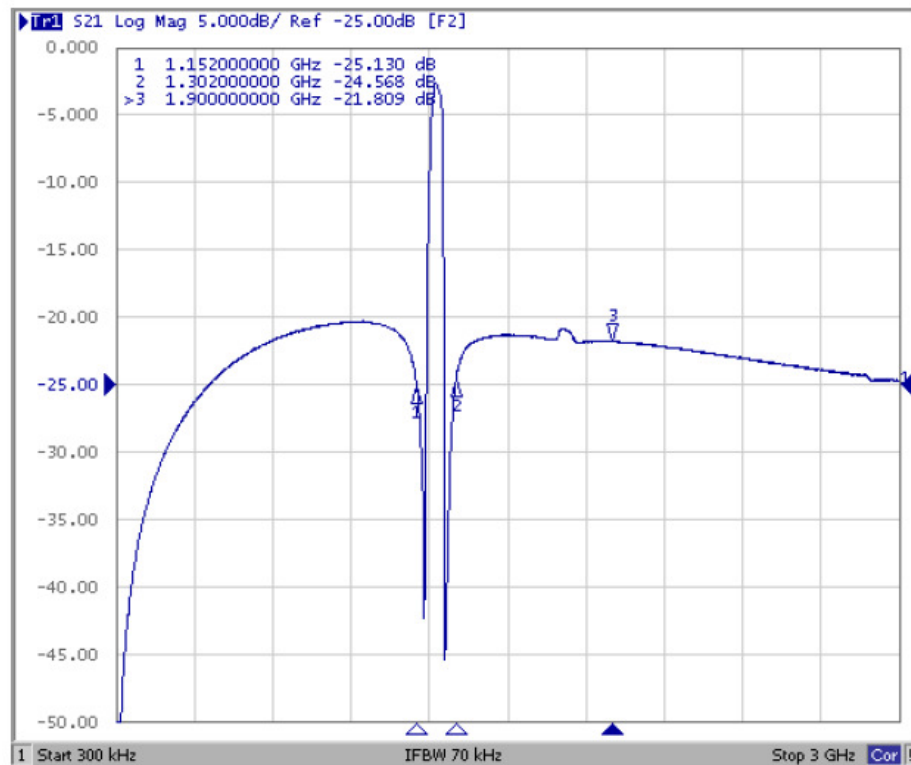


2.0 x 1.6 x 0.75 mm

FILTER FREQUENCY RESPONSE (WITH-IN-PASSBAND)



FILTER FREQUENCY RESPONSE (WIDEBAND)



Surface Mount 1227.60MHz SAW Filter

AFS20A20-1227.60-T3

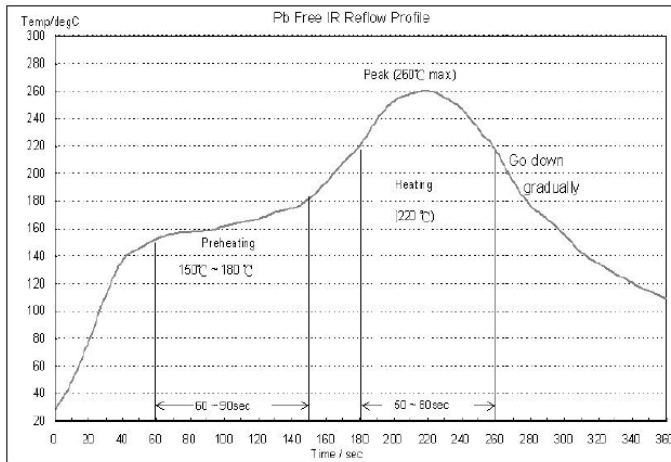


RoHS/RoHS II compliant



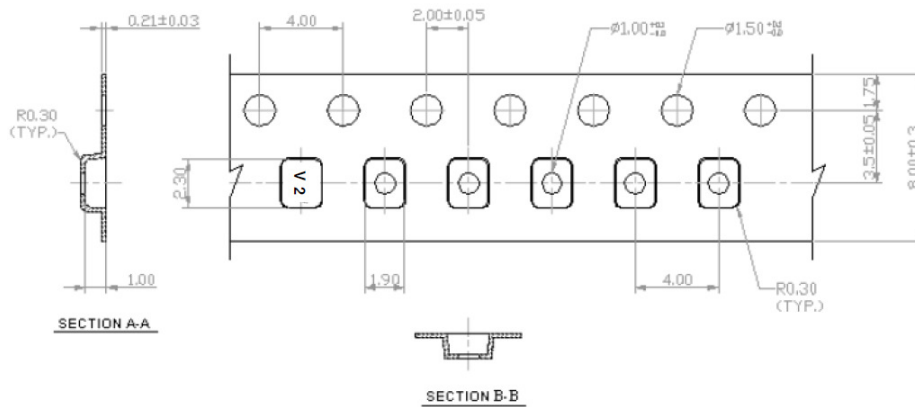
2.0 x 1.6 x 0.75 mm

REFLOW PROFILE:

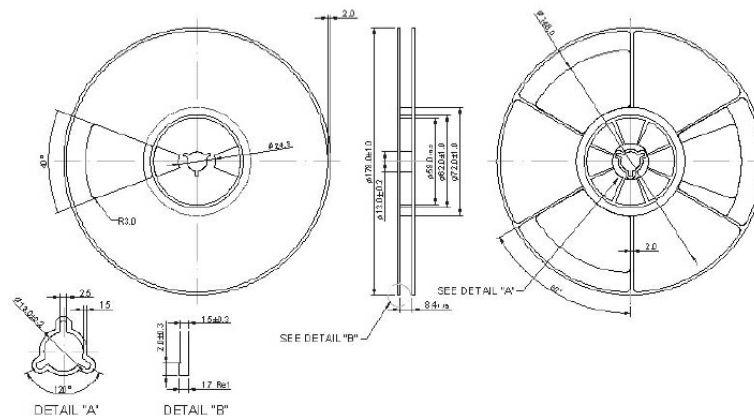


TAPE & REEL:

Packaging: 3,000 Units Per Reel



Reel Dimensions



Dimensions: mm

ATTENTION: Abracon Corporation's products are COTS – Commercial-Off-The-Shelf products; suitable for Commercial, Industrial and, where designated, Automotive Applications. Abracon's products are not specifically designed for Military, Aviation, Aerospace, Life-dependant Medical applications or any application requiring high reliability where component failure could result in loss of life and/or property. For applications requiring high reliability and/or presenting an extreme operating environment, written consent and authorization from Abracon Corporation is required. Please contact Abracon Corporation for more information.

ABRACON IS
ISO 9001:2008
CERTIFIED



Visit www.abracon.com for Terms & Conditions of Sale **Revised: 02.16.15**
30332 Esperanza, Rancho Santa Margarita, California 92688
tel 949-546-8000 | fax 949-546-8001 | www.abracon.com

X-ON Electronics

Largest Supplier of Electrical and Electronic Components

Click to view similar products for [Signal Conditioning](#) category:

Click to view products by [ABRACON](#) manufacturer:

Other Similar products are found below :

[MAPDCC0001](#) [MAPDCC0004](#) [PD0409J5050S2HF](#) [880157](#) [HHS-109-PIN](#) [DC1417J5005AHF](#) [AFS14A30-2185.00-T3](#) [AFS14A35-1591.50-T3](#) [DS-323-PIN](#) [B39321R801H210](#) [1A0220-3](#) [JP510S](#) [LFB212G45SG8C341](#) [LFB322G45SN1A504](#) [LFL182G45TC3B746](#) [SF2159E](#) [30057](#) [FM-104-PIN](#) [CER0813B](#) [MAPDCC0005](#) [3A325](#) [40287](#) [41180](#) [ATB3225-75032NCT](#) [C5060J5003AHF](#) [JHS-115-PIN](#) [JP503AS](#) [DC0710J5005AHF](#) [DC2327J5005AHF](#) [DC3338J5005AHF](#) [43020](#) [LFB2H2G60BB1C106](#) [LFL15869MTC1B787](#) [X3C19F1-20S](#) [XC3500P-20S](#) [10013-20](#) [SF2194E](#) [CDBLB455KCAX39-B0](#) [TGL2208-SM, EVAL](#) [RF1353C](#) [1E1305-3](#) [1F1304-3S](#) [1G1304-30](#) [B0922J7575AHF](#) [2020-6622-20](#) [10017-3](#) [TP-102-PIN](#) [TP-103-PIN](#) [BD1222J50200AHF](#) [BD1722J50100AHF](#)