

SMD 869.0MHz SAW Filter

AFS869.0W01-TS3



RoHS
Compliant



3.8 x 3.8 x 1.5mm

FEATURES:

- 3.8 x 3.8 x 1.5mm SMD package
- Low pass band insertion loss 4.5dB
- Input/output 50ohm terminated

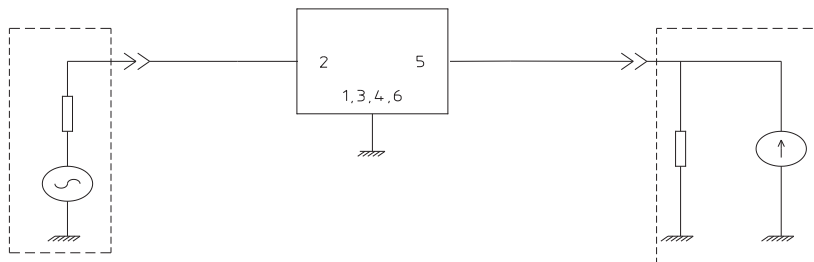
APPLICATIONS:

- CDMA450
- RF SAW filter for Telecommunication
- PDA
- Remote controller

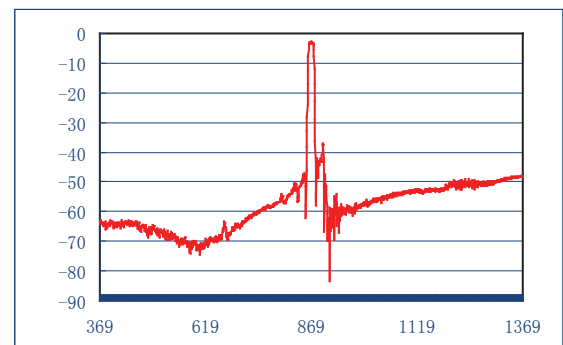
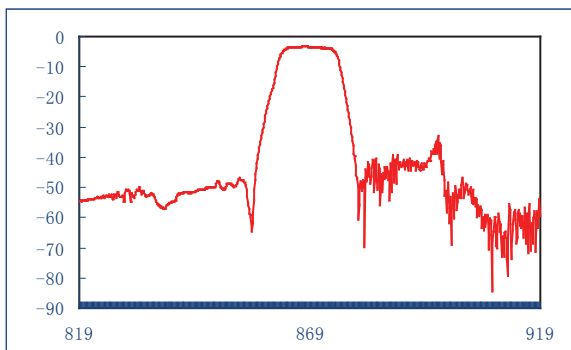
STANDARD SPECIFICATIONS:

Parameters	Minimum	Typical	Maximum	Units	Notes
Center Frequency (f_0)	869.0			MHz	
3dB band Width	-----	8	-----	MHz	
Insertion Loss	-----	-----	4.5	dB	868.0~870.0MHz
Amplitude Ripple	-----	-----	1.5	dB	868.0~870.0MHz
Relative Attenuation	40	-----	-----	dB	825.0~828.0MHz
	35	-----	-----	dB	846.0~849.0MHz
	35	-----	-----	dB	889.0~892.0MHz
	40	-----	-----	dB	910.0~913.0MHz
Input Impedance	50			Ω	
Output Impedance	50			Ω	
Operation Temperature Range	-30	-----	+80	$^{\circ}\text{C}$	
Storage Temperature Range	-40	-----	+85	$^{\circ}\text{C}$	
DC Permissive Voltage	-----	-----	10	Vdc	
Maximum Input Power	-----	-----	0	dBm	

TEST CIRCUIT:



FREQUENCY CHARACTERISTICS



SMD 869.0MHz SAW Filter

AFS869.0W01-TS3

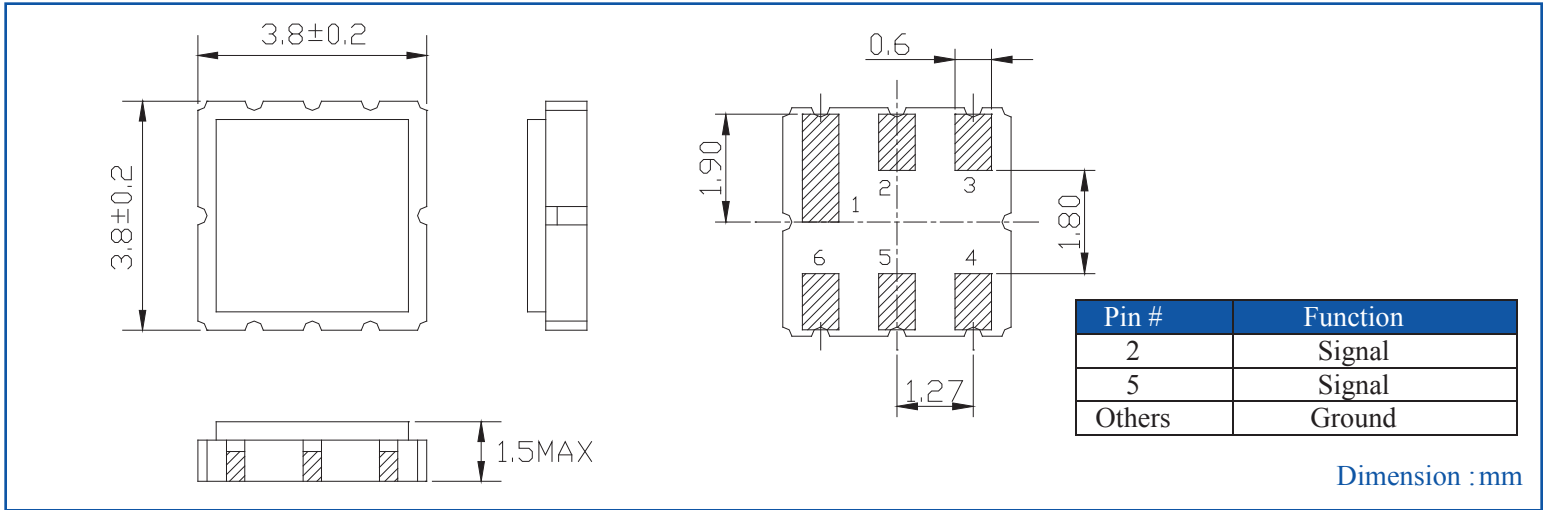


RoHS
Compliant

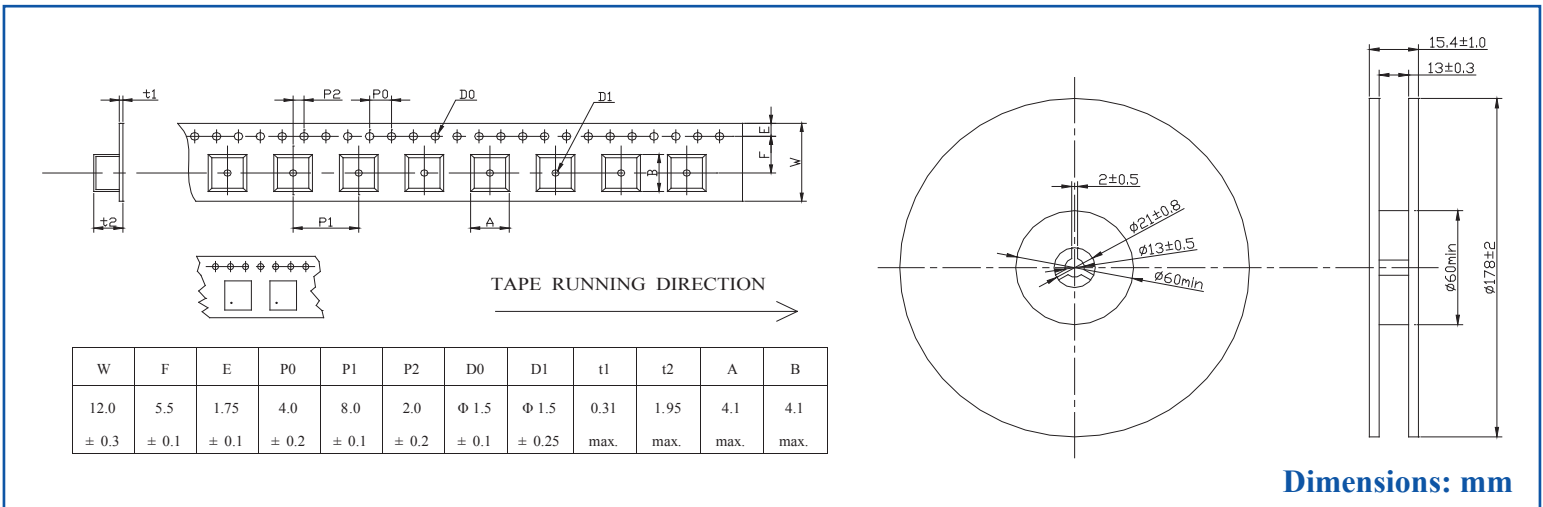


3.8 x 3.8 x 1.5mm

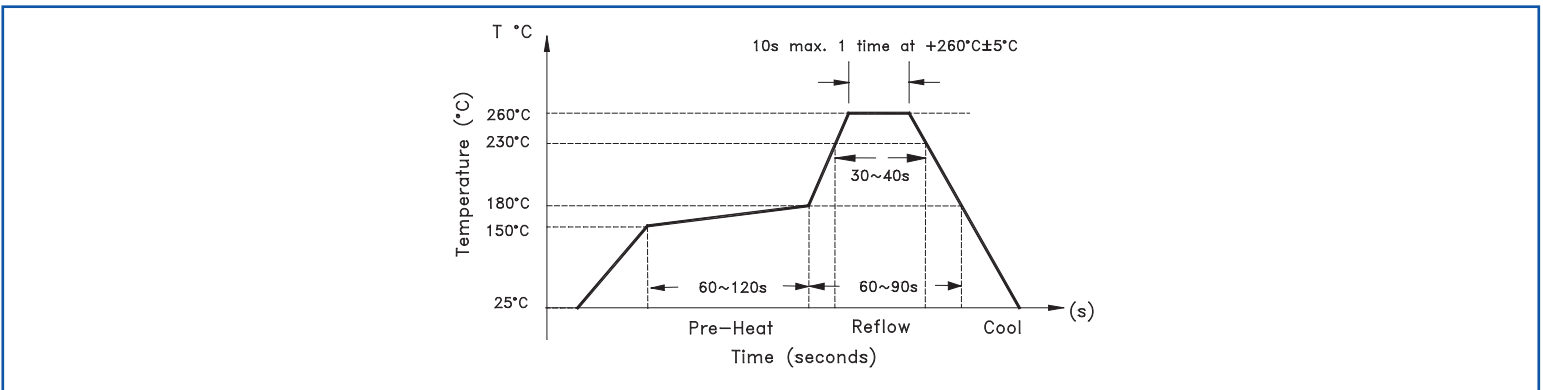
OUTLINE DIMENSIONS:



TAPE & REEL: 1000pcs/reel



REFLOW PROFILE:



ATTENTION: Abracon Corporation's products are COTS – Commercial-Off-The-Shelf products; suitable for Commercial, Industrial and, where designated, Automotive Applications. Abracon's products are not specifically designed for Military, Aviation, Aerospace, Life-dependant Medical applications or any application requiring high reliability where component failure could result in loss of life and/or property. For applications requiring high reliability and/or presenting an extreme operating environment, written consent and authorization from Abracon Corporation is required. Please contact Abracon Corporation for more information.

ABRACON IS
ISO 9001:2008
CERTIFIED



Visit www.abracon.com for Terms & Conditions of Sale
30332 Esperanza, Rancho Santa Margarita, California 92688
tel 949-546-8000 | fax 949-546-8001 | www.abracon.com

Revised: 08.26.11

X-ON Electronics

Largest Supplier of Electrical and Electronic Components

Click to view similar products for [Signal Conditioning](#) category:

Click to view products by [ABRACON](#) manufacturer:

Other Similar products are found below :

[MAPDCC0001](#) [MAPDCC0004](#) [PD0409J5050S2HF](#) [880157](#) [HHS-109-PIN](#) [DC1417J5005AHF](#) [AFS14A30-2185.00-T3](#) [AFS14A35-1591.50-T3](#) [DS-323-PIN](#) [B39321R801H210](#) [1A0220-3](#) [JP510S](#) [LFB212G45SG8C341](#) [LFB322G45SN1A504](#) [LFL182G45TC3B746](#) [SF2159E](#) [30057](#) [FM-104-PIN](#) [CER0813B](#) [MAPDCC0005](#) [3A325](#) [40287](#) [41180](#) [ATB3225-75032NCT](#) [BD0810N50100AHF](#) [BD2425J50200AHF](#) [C5060J5003AHF](#) [JHS-115-PIN](#) [JP503AS](#) [DC0710J5005AHF](#) [DC2327J5005AHF](#) [DC3338J5005AHF](#) [43020](#) [LFB2H2G60BB1C106](#) [LFL15869MTC1B787](#) [X3C19F1-20S](#) [XC3500P-20S](#) [10013-20](#) [SF2194E](#) [CDBLB455KCAX39-B0](#) [TGL2208-SM, EVAL](#) [RF1353C](#) [1E1305-3](#) [1F1304-3S](#) [1G1304-30](#) [B0922J7575AHF](#) [2020-6622-20](#) [TP-102-PIN](#) [TP-103-PIN](#) [BD1222J50200AHF](#)