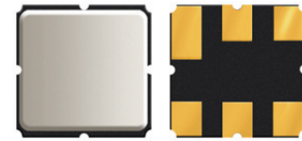


SMD 915.0MHz SAW FILTER

AFS915.0W03-TS3



RoHS
Compliant



3.8 x 3.8 x 1.5mm

FEATURES:

- 3.8 x 3.8 x 1.5mm SMD package
- Low pass band insertion loss 3.3dB
- Input/output 50ohm terminated
- Low amplitude ripple 1.5dB

APPLICATIONS:

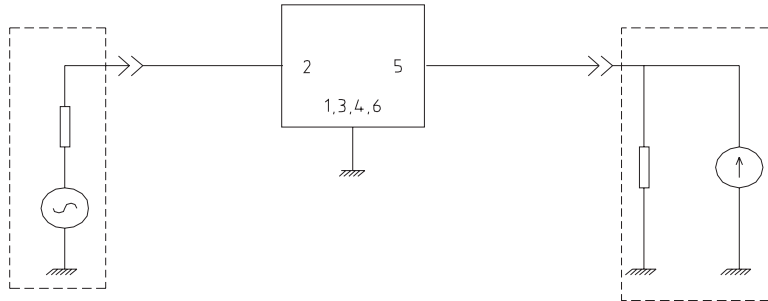
- CDMA450
- RF SAW filter for Telecommunication
- PDA
- Remote controller

STANDARD SPECIFICATIONS:

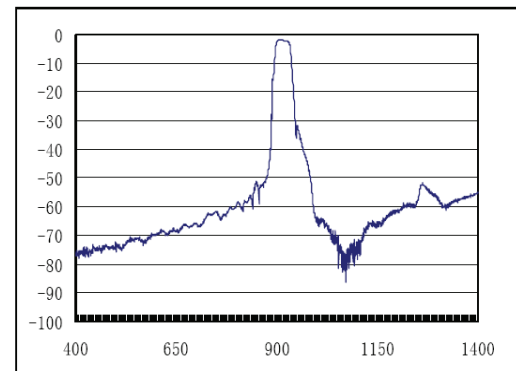
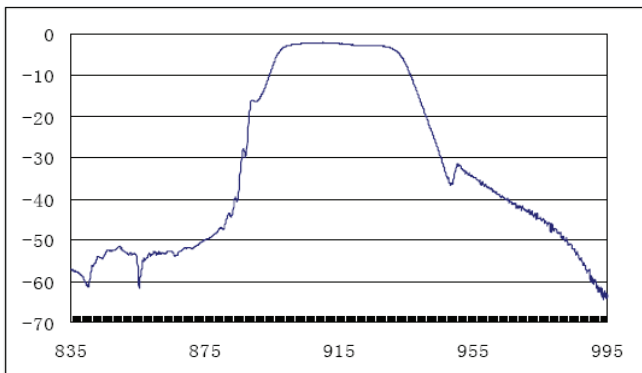
ABRACON P/N: **AFS915.0W03-TS3**
 Operating temperature: **0°C to +70°C**
 Storage temperature: **-40°C to +85°C**
 DC Permissive Voltage : **10 Vdc max.**
 Maximum Input Power : **10 dBm**

Item	Frequency	Specification
Center Frequency (f_0)	915.0 MHz	
Passband Width	± 13.0 MHz	
Insertion Loss	902~928	3.3 dB max.
Amplitude Ripple	902~928	1.5 dB max.
Relative Attenuation	10.0~700.0	50 dB min.
	700.0~845.0	45 dB min.
	845.0~880.0	35 dB min.
	947.0~992.0	15 dB min.
	992.0~1020.0	35 dB min.
Temperature Coefficient of Frequency		-30ppm/k
Terminating Impedance		50 Ω /0nF.

TEST CIRCUIT:



FREQUENCY CHARACTERISTICS



X-ON Electronics

Largest Supplier of Electrical and Electronic Components

Click to view similar products for [Signal Conditioning](#) category:

Click to view products by [Abracon](#) manufacturer:

Other Similar products are found below :

[MAPDCC0001](#) [MAPDCC0004](#) [PD0409J5050S2HF](#) [880157](#) [HHS-109-PIN](#) [DC1417J5005AHF](#) [AFS14A30-2185.00-T3](#) [AFS14A35-1591.50-T3](#) [DS-323-PIN](#) [B39321R801H210](#) [1A0220-3](#) [JP510S](#) [LFB212G45SG8C341](#) [LFB322G45SN1A504](#) [LFL182G45TC3B746](#) [SF2159E](#) [30057](#) [FM-104-PIN](#) [CER0813B](#) [MAPDCC0005](#) [3A325](#) [40287](#) [41180](#) [ATB3225-75032NCT](#) [BD0810N50100AHF](#) [BD2425J50200AHF](#) [C5060J5003AHF](#) [JHS-115-PIN](#) [JP503AS](#) [DC0710J5005AHF](#) [DC2327J5005AHF](#) [DC3338J5005AHF](#) [43020](#) [LFB2H2G60BB1C106](#) [LFL15869MTC1B787](#) [X3C19F1-20S](#) [XC3500P-20S](#) [10013-20](#) [SF2194E](#) [CDBLB455KCAX39-B0](#) [TGL2208-SM, EVAL](#) [RF1353C](#) [1E1305-3](#) [1F1304-3S](#) [1G1304-30](#) [B0922J7575AHF](#) [2020-6622-20](#) [TP-102-PIN](#) [TP-103-PIN](#) [BD1222J50200AHF](#)