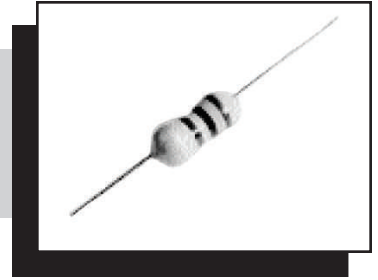


THROUGH-HOLE CONFORMAL COATED INDUCTORS

AICC-01 SERIES



STANDARD SPECIFICATIONS

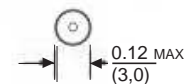
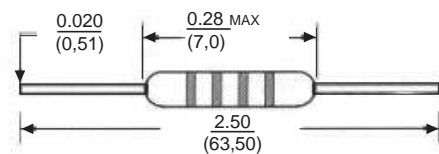
Part Number ²	L ^{1,2} (mH)	Q (MIN)	L Test (MHz)	SRF (MIN) (MHz)	DCR W (MAX)	Idc ³ (mA) (MAX)
AICC-01-R22K	0.22	35	25.2	150	0.40	400
AICC-01-R27K	0.27	35	25.2	150	0.43	380
AICC-01-R33K	0.33	35	25.2	150	0.48	370
AICC-01-R39K	0.39	35	25.2	150	0.51	350
AICC-01-R47K	0.47	35	25.2	150	0.56	330
AICC-01-R56K	0.56	40	25.2	150	0.61	320
AICC-01-R68K	0.68	40	25.2	150	0.67	310
AICC-01-R82K	0.82	40	7.96	150	0.80	270
AICC-01-1R2J	1.2	50	7.96	144	0.90	260
AICC-01-1R5J	1.5	50	7.96	131	1.0	250
AICC-01-1R8J	1.8	50	7.96	121	1.1	240
AICC-01-2R2J	2.2	50	7.96	110	1.2	230
AICC-01-2R7J	2.7	50	7.96	100	1.3	220
AICC-01-3R3J	3.3	50	7.96	94	1.4	210
AICC-01-3R9J	3.9	50	7.96	65	1.6	200
AICC-01-4R7J	4.7	50	7.96	56	1.7	190
AICC-01-5R6J	5.6	50	7.96	48	1.9	180
AICC-01-6R8J	6.8	50	7.96	37	2.0	170
AICC-01-8R2J	8.2	50	7.96	25	2.2	165
AICC-01-100J	10	50	7.96	21	2.5	160
AICC-01-120J	12	50	2.52	19	2.5	150
AICC-01-150J	15	50	2.52	17	2.8	145

Part Number ²	L ^{1,2} (mH)	Q (MIN)	L Test (MHz)	SRF (MIN) (MHz)	DCR W (MAX)	Idc ³ (mA) (MAX)
AICC-01-180J	18	50	2.52	13	3.1	140
AICC-01-220J	22	50	2.52	9.6	3.4	130
AICC-01-270J	27	50	2.52	7.2	3.8	125
AICC-01-330J	33	50	2.52	6.3	4.1	120
AICC-01-390J	39	50	2.52	6.3	4.5	115
AICC-01-470J	47	50	2.52	6.3	4.9	110
AICC-01-560J	56	50	2.52	6.2	5.3	105
AICC-01-680J	68	50	2.52	5.7	5.8	100
AICC-01-820J	82	50	2.52	5.3	6.3	95
AICC-01-101J	100	50	2.52	4.8	7	90
AICC-01-121J	120	50	0.796	3.8	13	90
AICC-01-151J	150	50	0.796	3.5	15	85
AICC-01-181J	180	50	0.796	3.3	16	80
AICC-01-221J	220	50	0.796	3.0	17	75
AICC-01-271J	270	50	0.796	2.8	19	65
AICC-01-331J	330	50	0.796	2.6	20	60
AICC-01-391J	390	50	0.796	2.4	22	55
AICC-01-471J	470	50	0.796	2.3	24	55
AICC-01-561J	560	50	0.796	2.1	26	50
AICC-01-681J	680	50	0.796	2.0	28	45
AICC-01-821J	820	50	0.796	1.9	30	40
AICC-01-102J	1000	50	0.796	1.4	33	40

Notes:

1. Inductance (L) tolerance: J = 5%, K = 10%, M = 20%
2. Letter suffix indicates standard tolerance
3. Current rating at which inductance (L) drops 10%
4. Operating temperature -25°C to +105°C
5. Storage temperature -40°C to +125°C
6. Dimensions: inches / mm; see spec sheet for tolerance limits
7. Marking EIA 4 band color code
8. Specifications subject to change without notice

PHYSICAL CHARACTERISTICS⁶

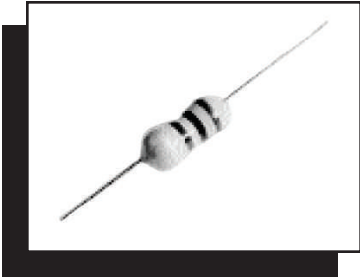


ABRACON IS
ISO 9001 / QS 9000
CERTIFIED

29 Journey • Aliso Viejo, CA 92656 • USA
(949) 448-7070 • Fax: (949) 448-8484

E-MAIL: abinfo@abracon.com • INTERNET ADDRESS: www.abracon.com





THROUGH-HOLE CONFORMAL COATED INDUCTORS

AICC-02 SERIES

STANDARD SPECIFICATIONS

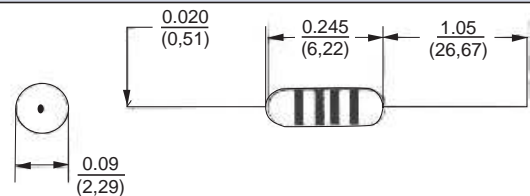
Part Number ²	L ^{1,2} (mH)	Q (MIN)	L Test (MHz)	SRF (MIN) (MHz)	DCR W (MAX)	Idc ³ (mA) (MAX)
AICC-02-R27K	0.27	40	25.2	360	0.08	1110
AICC-02-R33K	0.33	40	25.2	350	0.08	1110
AICC-02-R39K	0.39	40	25.2	320	0.09	1000
AICC-02-R47K	0.47	40	25.2	300	0.10	1000
AICC-02-R56K	0.56	40	25.2	280	0.11	950
AICC-02-R68K	0.68	40	25.2	250	0.12	900
AICC-02-R82K	0.82	40	25.2	200	0.12	900
AICC-02-1R0K	1.0	40	25.2	180	0.15	815
AICC-02-1R2K	1.2	40	7.96	165	0.18	740
AICC-02-1R5K	1.5	45	7.96	150	0.20	700
AICC-02-1R8K	1.8	50	7.96	125	0.23	655
AICC-02-2R2K	2.2	50	7.96	110	0.25	630
AICC-02-2R7K	2.7	50	7.96	96	0.28	595
AICC-02-3R3K	3.3	50	7.96	70	0.30	575
AICC-02-3R9K	3.9	45	7.96	65	0.32	555
AICC-02-4R7K	4.7	45	7.96	50	0.35	560
AICC-02-5R6K	5.6	45	7.96	40	0.40	500
AICC-02-6R8K	6.8	40	7.96	30	0.45	470
AICC-02-8R2K	8.2	40	7.96	28	0.55	425
AICC-02-100K	10	40	7.96	22	0.72	370
AICC-02-120K	12	45	2.52	20	0.80	350
AICC-02-150K	15	50	2.52	16	0.88	335

Part Number ²	L ^{1,2} (mH)	Q (MIN)	L Test (MHz)	SRF (MIN) (MHz)	DCR W (MAX)	Idc ³ (mA) (MAX)
AICC-02-180K	18	50	2.52	15	1.00	315
AICC-02-220K	22	50	2.52	13	1.20	285
AICC-02-270K	27	50	2.52	11	1.35	270
AICC-02-330K	33	50	2.52	10	1.50	255
AICC-02-390K	39	50	2.52	9.5	1.70	240
AICC-02-470K	47	60	2.52	8.5	2.30	205
AICC-02-560K	56	60	2.52	7.5	2.60	195
AICC-02-680K	68	60	2.52	6.5	2.90	185
AICC-02-820K	82	60	2.52	6.0	3.20	175
AICC-02-101K	100	60	0.796	5.5	3.50	165
AICC-02-121K	120	60	0.796	5.4	3.80	160
AICC-02-151K	150	60	0.796	4.7	4.40	150
AICC-02-181K	180	60	0.796	4.3	5.00	140
AICC-02-221K	220	60	0.796	4.0	5.70	130
AICC-02-271K	270	60	0.796	3.7	6.50	120
AICC-02-331K	330	60	0.796	3.4	9.50	100
AICC-02-391K	390	60	0.796	2.8	10.5	95
AICC-02-471K	470	60	0.796	2.5	11.6	90
AICC-02-561K	560	60	0.796	2.3	13.0	85
AICC-02-681K	680	60	0.796	2.0	18.0	75
AICC-02-821K	820	60	0.796	1.5	23.0	65
AICC-02-102K	1000	60	0.796	1.2	26.0	60

Notes:

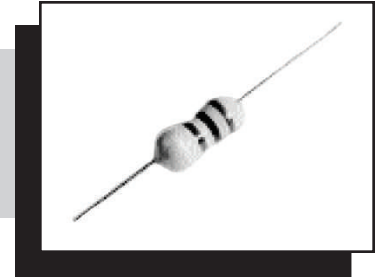
1. Inductance (L) tolerance: J = 5%, K = 10%, M = 20%
2. Letter suffix indicates standard tolerance
3. Current rating at which inductance (L) drops 10%
4. Operating temperature -25°C to +105°C
5. Storage temperature -40°C to +125°C
6. Dimensions: inches / mm; see spec sheet for tolerance limits
7. Marking EIA 4 band color code
8. Specifications subject to change without notice

PHYSICAL CHARACTERISTICS⁶



THROUGH-HOLE CONFORMAL COATED INDUCTORS

AICC-03 SERIES



STANDARD SPECIFICATIONS

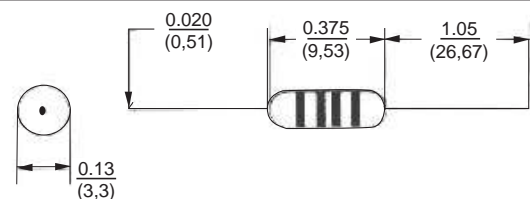
Part Number ²	L ^{1,2} (mH)	Q (MIN)	L Test (MHz)	SRF (MIN) (MHz)	DCR W (MAX)	I _{DC} ³ (mA) (MAX)
AICC-03-R22K	0.22	25	25	380	0.21	880
AICC-03-R27K	0.27	25	25	340	0.24	800
AICC-03-R33K	0.33	25	25	300	0.28	750
AICC-03-R39K	0.39	25	25	380	0.32	680
AICC-03-R47K	0.47	25	25	250	0.36	650
AICC-03-R56K	0.56	25	25	230	0.41	600
AICC-03-R68K	0.68	25	25	210	0.47	550
AICC-03-R82K	0.82	45	25	172	0.17	980
AICC-03-1R0K	1.0	45	25	157	0.19	920
AICC-03-1R2K	1.2	50	7.9	144	0.21	880
AICC-03-1R5K	1.5	50	7.9	131	0.23	830
AICC-03-1R8K	1.8	55	7.9	121	0.25	790
AICC-03-2R2K	2.2	55	7.9	110	0.28	750
AICC-03-2R7K	2.7	60	7.9	100	0.30	720
AICC-03-3R3K	3.3	65	7.9	94	0.30	670
AICC-03-3R9K	3.9	65	7.9	86	0.40	640
AICC-03-4R7K	4.7	70	7.9	80	0.39	620
AICC-03-5R6K	5.6	70	7.9	74	0.43	590
AICC-03-6R8K	6.8	75	7.9	68	0.50	550
AICC-03-8R2K	8.2	80	7.9	53	0.50	530
AICC-03-100K	10	85	7.9	45	0.58	500
AICC-03-120K	12	75	2.5	34	0.63	480
AICC-03-150K	15	70	2.5	20	0.72	460

Part Number ²	L ^{1,2} (mH)	Q (MIN)	L Test (MHz)	SRF (MIN) (MHz)	DCR W (MAX)	I _{DC} ³ (mA) (MAX)
AICC-03-180K	18	65	2.5	14	0.77	430
AICC-03-220K	22	60	2.5	9.9	0.80	410
AICC-03-270K	27	55	2.5	7.6	0.94	390
AICC-03-330K	33	55	2.5	6.3	1.03	370
AICC-03-390K	39	50	2.5	6.3	1.12	350
AICC-03-470K	47	45	2.5	6.3	1.22	340
AICC-03-560K	56	40	2.5	6.2	1.34	320
AICC-03-680K	68	40	2.5	5.7	1.47	305
AICC-03-820K	82	35	2.5	5.3	1.62	290
AICC-03-101K	100	30	2.5	4.8	1.80	275
AICC-03-121K	120	70	0.79	3.8	3.70	185
AICC-03-151K	150	70	0.79	3.5	4.20	175
AICC-03-181K	180	70	0.79	3.3	4.60	165
AICC-03-221K	220	70	0.79	3.0	5.10	155
AICC-03-271K	270	65	0.79	2.8	5.80	145
AICC-03-331K	330	65	0.79	2.6	6.40	137
AICC-03-391K	390	65	0.79	2.4	7.00	133
AICC-03-471K	470	60	0.79	2.2	7.70	126
AICC-03-561K	560	60	0.79	2.1	8.50	120
AICC-03-681K	680	55	0.79	1.9	9.40	113
AICC-03-821K	820	55	0.79	1.8	10.5	100
AICC-03-102K	1000	50	0.79	1.4	14.0	100

Notes:

1. Inductance (L) tolerance: J = 5%, K = 10%, M = 20%
2. Letter suffix indicates standard tolerance
3. Current rating at which inductance (L) drops 10%
4. Operating temperature -25°C to +105°C
5. Storage temperature -40°C to +125°C
6. Dimensions: inches / mm; see spec sheet for tolerance limits
7. Marking per EIA 4-band color code
8. Specifications subject to change without notice

PHYSICAL CHARACTERISTICS⁶



ABRACON IS
ISO 9001 / QS 9000
CERTIFIED

29 Journey • Aliso Viejo, CA 92656 • USA
(949) 448-7070 • Fax: (949) 448-8484

E-MAIL: abinfo@abracon.com • INTERNET ADDRESS: www.abracon.com



X-ON Electronics

Largest Supplier of Electrical and Electronic Components

Click to view similar products for [Fixed Inductors](#) category:

Click to view products by [ABRACON](#) manufacturer:

Other Similar products are found below :

[MLZ1608M6R8WTD25](#) [MLZ1608N6R8LT000](#) [MLZ1608N3R3LTD25](#) [MLZ1608N3R3LT000](#) [MLZ1608N150LT000](#)
[MLZ1608M150WTD25](#) [MLZ1608M3R3WTD25](#) [MLZ1608M3R3WT000](#) [MLZ1608M150WT000](#) [MLZ1608A1R5WT000](#)
[MLZ1608N1R5LT000](#) [B82432C1333K000](#) [PCMB053T-1R0MS](#) [PCMB053T-1R5MS](#) [PCMB104T-1R5MS](#) [CR32NP-100KC](#) [CR32NP-151KC](#) [CR32NP-180KC](#) [CR32NP-181KC](#) [CR32NP-1R5MC](#) [CR32NP-390KC](#) [CR32NP-3R9MC](#) [CR32NP-680KC](#) [CR32NP-820KC](#)
[CR32NP-8R2MC](#) [CR43NP-390KC](#) [CR43NP-560KC](#) [CR43NP-680KC](#) [CR54NP-181KC](#) [CR54NP-470LC](#) [CR54NP-820KC](#) [CR54NP-8R5MC](#)
[MGDQ4-00004-P](#) [MGDU1-00016-P](#) [MHL1ECTTP18NJ](#) [MHL1JCTTD12NJ](#) [PE-51506NL](#) [PE-53601NL](#) [PE-53630NL](#) [PE-53824SNLT](#) [PE-62892NL](#) [PE-92100NL](#) [PG0434.801NLT](#) [PG0936.113NLT](#) [PM06-2N7](#) [PM06-39NJ](#) [HC2LP-R47-R](#) [HC2-R47-R](#) [HC3-2R2-R](#) [HC8-1R2-R](#)