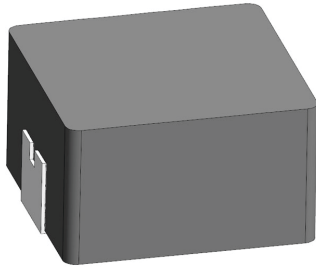


[Request Samples](#)
[Check Inventory](#)


## FEATURES

- Shielded construction
- Soft saturation
- Low DCR per cubic mm
- Designed for switching frequencies between 100KHz-2MHz
- Automotive option available upon request



## ELECTRICAL SPECIFICATIONS @ 25°C

PART NUMBER*	INDUCTANCE (uH)	TOLERANCE (%)	IRMS (A)	ISAT (A)	DC RESISTANCE (mΩ)		TYPE
					TYP	MAX	
AMDLA4530S-R10NT	0.10	30	32	32	1.8	2.1	Lead Frame
AMDLA4530S-R12NT	0.12	30	30	30	2.0	2.3	Lead Frame
AMDLA4530S-R22MT	0.22	20	18	17	2.8	3.2	Lead Frame
AMDLA4530S-R35MT	0.35	20	16.5	15	4.6	5.1	Lead Frame
AMDLA4530S-R47MT	0.47	20	16	11	5.5	6.4	Lead Frame
AMDLA4530S-R68MT	0.68	20	12	9.0	7.0	8.4	Lead Frame
AMDLA4530S-1R0MT	1.0	20	8.5	8.5	12.8	13.8	Lead Frame
AMDLA4530S-1R2MT	1.2	20	7.2	7.6	14	16	Lead Frame
AMDLA4530S-1R5MT	1.5	20	6.6	6.3	16	21	Lead Frame
AMDLA4530S-2R2MT	2.2	20	6.0	5.7	23	27.6	Lead Frame
AMDLA4530S-3R3MT	3.3	20	5.5	5.0	30	36	Lead Frame
AMDLA4530S-4R7MT	4.7	20	5.0	4.0	43	52	Lead Frame

\* Please refer to Part Identification section

### Test Conditions

Inductance: 100 kHz, 1V, 0 Adc  
 Humidity Range: 85 ± 2% RH  
 Temperature Rise Current: Current measured at Δ T of 40°C  
 Saturation Current: Current measured at Δ L of 30%

## GENERAL SPECIFICATIONS

**Operating Temperature:**  
 -55°C to +155°C with (40°C rise) Irms current.

**Maximum Part Temperature: +155°C**  
**Components Storage Temperature:**  
 -55°C to +125°C

**Tape and Reel Packaging**  
**Temperature: -55°C to +80°C**

**MSL: Level 1**

## MATERIALS

**Core:** Metal Alloy  
**Wire:** Copper  
**Terminal:** Tin Plating  
**Ink:** Black

## PART BUILDER

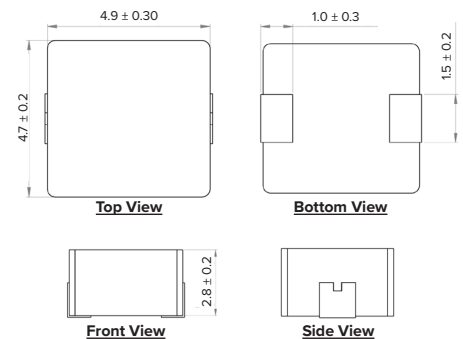


1. Tolerance: M = 20%  
 N = 30%

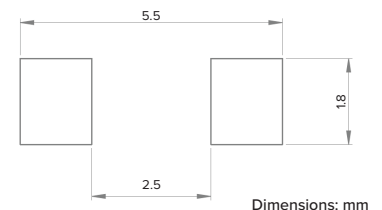
2. Packaging: B = Bulk  
 T = Tape and Reel (1,000pcs/reel)

\*Refer to Electrical Specification table

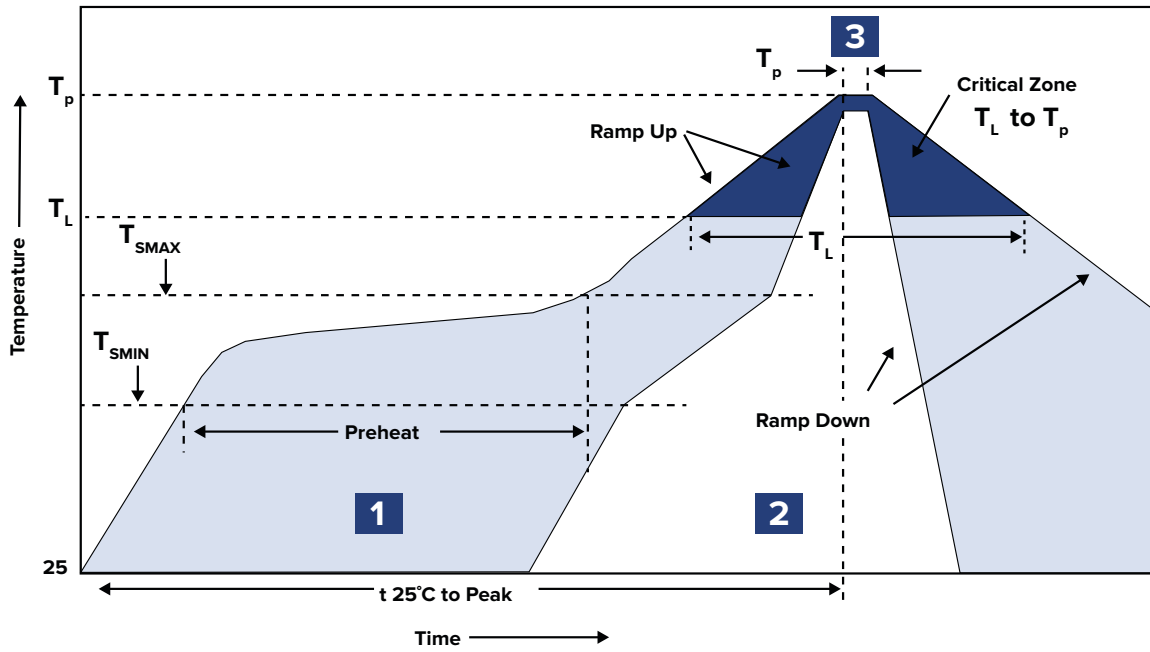
## PRODUCT DIMENSIONS



## RECOMMENDED LANDING PATTERN



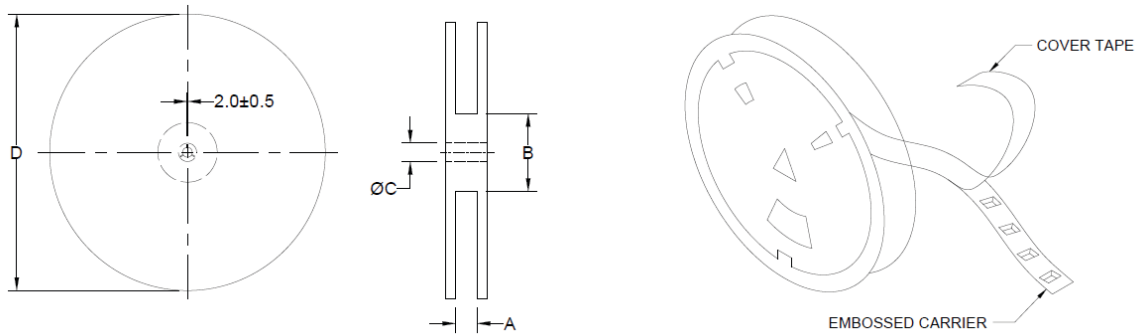
## RECOMMENDED REFLOW PROFILE



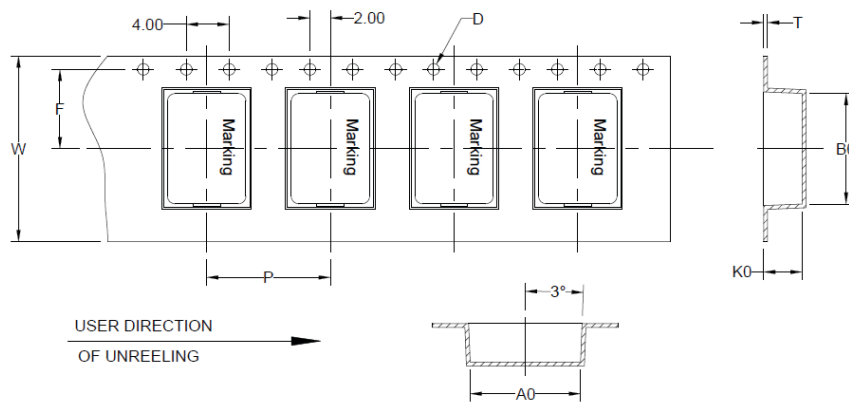
ZONE	DESCRIPTION	TEMPERATURE	TIMES
1	Preheat	$T_{smin} \sim T_{smax}$ 150°C ~ 200°C	60 ~ 180 sec.
2	Reflow	$T_L$ 217°C	60 ~ 150 sec.
3	Peak Heat	$T_p$ 260°C	10 sec. MAX

## PACKAGING

Tape and Reel: 1,000  
 Units per Carton: 8,000  
 T&R per Carton: 8  
 Weight per Carton: 7.9 kg  
 Weight per Unit: 0.34 g  
 Carton Dimensions: 410 x 325 x 415 mm



TYPE	A	B	C	D
13" x 16 mm	16.4 +2/-0	100.0 ± 2.0	13.0 +0.5/-0.2	330.0



B <sub>0</sub>	A <sub>0</sub>	K <sub>0</sub>	P	W	F	T	D
5.3 ± 0.1	5.0 ± 0.1	3.3 ± 0.1	12.0 ± 0.1	16.0 ± 0.3	5.5 ± 0.1	0.35 ± 0.05	1.5 ± 0.1

Dimensions: mm

This product is commercial off-the-shelf (COTS) and not specifically designed for automotive, military, aviation, aerospace, implantable, life-dependent medical or safety applications. This product is not recommended for use in any application requiring high reliability in which component failure could result in loss of life and/or property damage without prior written approval from Abracon. Specifications are subject to change without notice. Contact Abracon for more information.

## X-ON Electronics

Largest Supplier of Electrical and Electronic Components

*Click to view similar products for [Fixed Inductors](#) category:*

*Click to view products by [Abracon](#) manufacturer:*

Other Similar products are found below :

[CR43NP-680KC](#) [CR54NP-820KC](#) [CR54NP-8R5MC](#) [CTX32CT-100](#) [70F224AI](#) [MGDQ4-00004-P](#) [MHL1ECTTP18NJ](#) [MHL1JCTTD12NJ](#)  
[PE-51506NL](#) [PE-53601NL](#) [PE-53602NL](#) [PE-53630NL](#) [PE-53824SNLT](#) [PE-62892NL](#) [PE-92100NL](#) [PG0434.801NLT](#) [PG0936.113NLT](#)  
[9310-16](#) [PM06-2N7](#) [PM06-39NJ](#) [A01TK](#) [1206CS-471XJ](#) [HC2-2R2TR](#) [HC2LP-R47-R](#) [HC3-2R2-R](#) [1206CS-151XG](#) [RCH664NP-140L](#)  
[RCH664NP-4R7M](#) [RCH8011NP-221L](#) [RCP1317NP-332L](#) [RCP1317NP-391L](#) [RCR1010NP-470M](#) [RCR110DNP-331L](#) [DH2280-4R7M](#)  
[DS1608C-106](#) [ASPI-4020HI-R10M-T](#) [B10TJ](#) [B82477P4333M](#) [B82498B3101J000](#) [B82498B3680J000](#) [ELJ-RE27NJF2](#) [1812CS-153XJ](#)  
[1812CS-183XJ](#) [1812CS-223XJ](#) [1812LS-104XJ](#) [1812LS-105XJ](#) [1812LS-124XJ](#) [1812LS-154XJ](#) [1812LS-223XJ](#) [1812LS-224XJ](#)