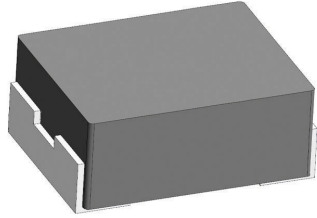


[Request Samples](#)
[Check Inventory](#)


## FEATURES

- Shielded construction
- Soft saturation
- High efficiency
- Designed for switching frequencies between 100KHz-5MHz
- Automotive option available upon request



## ELECTRICAL SPECIFICATIONS @ 25°C

PART NUMBER*	INDUCTANCE (uH)	TOLERANCE (%)	IRMS (A)	ISAT (A)	DC RESISTANCE (mΩ)		TYPE
					TYP	MAX	
AMELA2012S-R22MT	0.22	20	10.0	8.5	11	13	Lead Frame
AMELA2012S-R33MT	0.33	20	5.8	7.0	15	16.5	Lead Frame
AMELA2012S-R47MT	0.47	20	4.8	6.0	20	25	Lead Frame
AMELA2012S-R68MT	0.68	20	3.9	4.6	30	34	Lead Frame
AMELA2012S-1R0MT	1.0	20	3.7	4.3	38	45	Lead Frame
AMELA2012S-1R5MT	1.5	20	2.9	3.0	53	60	Lead Frame
AMELA2012S-2R2MT	2.2	20	2.4	2.7	78	90	Lead Frame

\* Please refer to Part Identification section

### Test Conditions

Inductance: 1 MHz, 1 V, 0 Adc

Humidity Range: 65% RH

Temperature Rise Current: Current measured at Δ T of 40°C

Saturation Current: Current measured at Δ L of 30%

## GENERAL SPECIFICATIONS

**Operating Temperature:** -55°C to +125°C with (40°C rise) Irms current.

**Maximum Part Temperature:** +125°C

**Components Storage Temperature:** -55°C to +125°C

**Tape and Reel Packaging**

**Temperature:** -20°C to +65°C

**MSL:** Level 1

## MATERIALS

**Core:** Metal Alloy

**Wire:** Copper

**Terminal:** Tin Plating

**Ink:** Black

## PART BUILDER

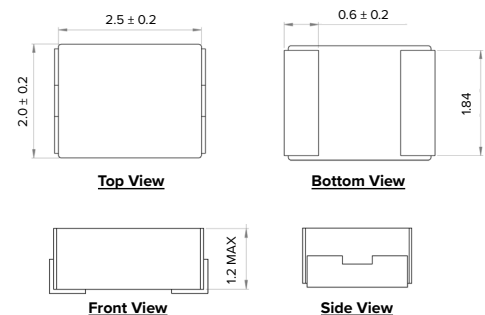


1. Tolerance: M = 20%

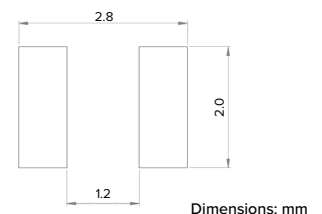
2. Packaging: B = Bulk  
T = Tape and Reel (3,000pcs/reel)

\*Refer to Electrical Specification table

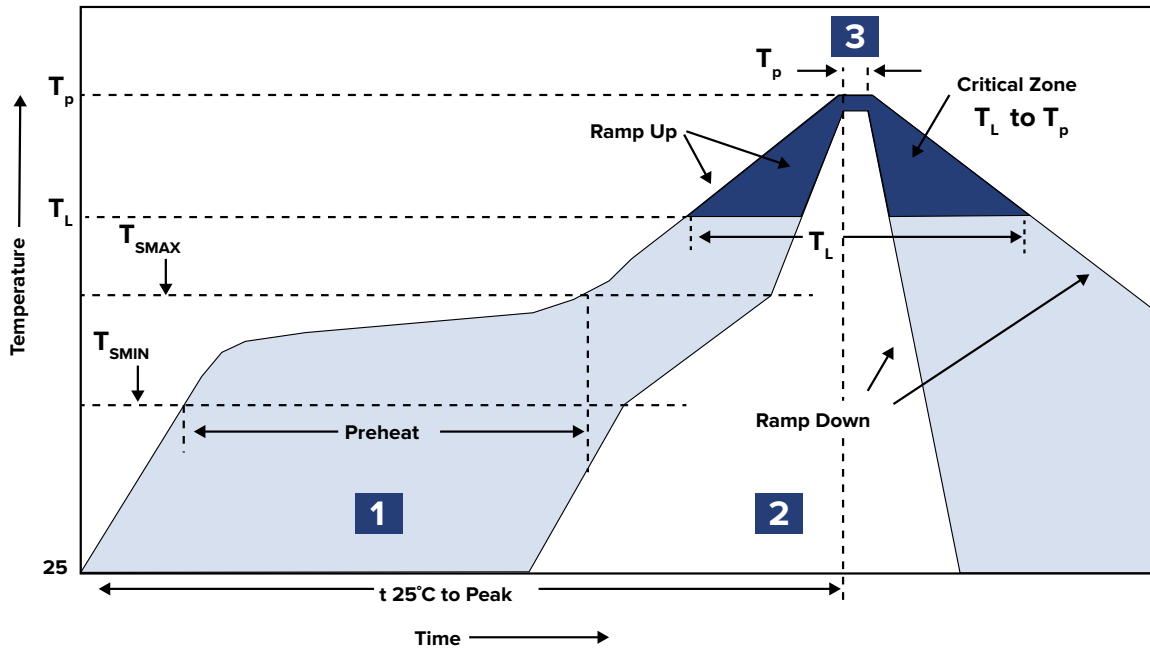
## PRODUCT DIMENSIONS



## RECOMMENDED LANDING PATTERN



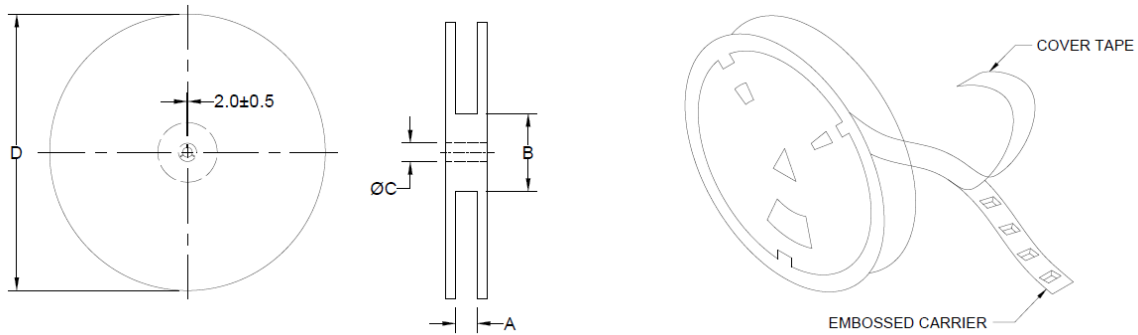
RECOMMENDED REFLOW PROFILE



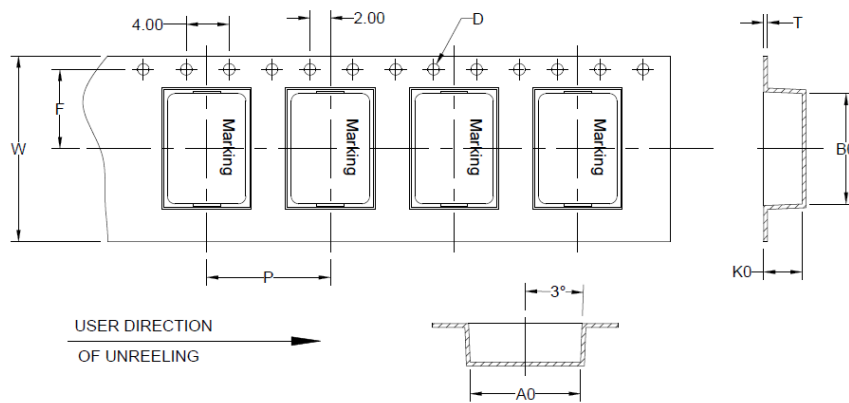
ZONE	DESCRIPTION	TEMPERATURE	TIMES
1	Preheat	$T_{smin} \sim T_{smax}$ 150°C ~ 180°C	60 ~ 120 sec.
2	Reflow	$T_L$ 230°C	30 ~ 40 sec.
3	Peak Heat	$T_p$ 250°C+0/-5°C	10 sec. MAX

## PACKAGING

Tape and Reel: 3,000  
 Units per Carton: 144,000  
 T&R per Carton: 48  
 Weight per Carton: 6.3 kg  
 Weight per Unit: 0.06 g  
 Carton Dimensions: 450 x 380 x 210 mm



TYPE	A	B	C	D
7" x 8 mm	9.7 ± 0.5	50.0 ± 0.5	13.0 ± 0.1	183 ± 3.0



USER DIRECTION  
OF UNREELING →

B <sub>0</sub>	A <sub>0</sub>	K <sub>0</sub>	P	W	F	T	D
2.85 ± 0.1	2.4 ± 0.1	1.35 ± 0.05	4.0 ± 0.1	8.0 ± 0.1	3.5 ± 0.1	0.25 ± 0.03	1.5

Dimensions: mm

This product is commercial off-the-shelf (COTS) and not specifically designed for automotive, military, aviation, aerospace, implantable, life-dependent medical or safety applications. This product is not recommended for use in any application requiring high reliability in which component failure could result in loss of life and/or property damage without prior written approval from Abracon. Specifications are subject to change without notice. Contact Abracon for more information.

## X-ON Electronics

Largest Supplier of Electrical and Electronic Components

*Click to view similar products for [Fixed Inductors](#) category:*

*Click to view products by [Abracon](#) manufacturer:*

Other Similar products are found below :

[CR43NP-680KC](#) [CR54NP-820KC](#) [CR54NP-8R5MC](#) [CTX32CT-100](#) [70F224AI](#) [MGDQ4-00004-P](#) [MHL1ECTTP18NJ](#) [MHL1JCTTD12NJ](#)  
[PE-51506NL](#) [PE-53601NL](#) [PE-53602NL](#) [PE-53630NL](#) [PE-53824SNLT](#) [PE-62892NL](#) [PE-92100NL](#) [PG0434.801NLT](#) [PG0936.113NLT](#)  
[9310-16](#) [PM06-2N7](#) [PM06-39NJ](#) [A01TK](#) [1206CS-471XJ](#) [HC2-2R2TR](#) [HC2LP-R47-R](#) [HC3-2R2-R](#) [1206CS-151XG](#) [RCH664NP-140L](#)  
[RCH664NP-4R7M](#) [RCH8011NP-221L](#) [RCP1317NP-332L](#) [RCP1317NP-391L](#) [RCR1010NP-470M](#) [RCR110DNP-331L](#) [DH2280-4R7M](#)  
[DS1608C-106](#) [ASPI-4020HI-R10M-T](#) [B10TJ](#) [B82477P4333M](#) [B82498B3101J000](#) [B82498B3680J000](#) [ELJ-RE27NJF2](#) [1812CS-153XJ](#)  
[1812CS-183XJ](#) [1812CS-223XJ](#) [1812LS-104XJ](#) [1812LS-105XJ](#) [1812LS-124XJ](#) [1812LS-154XJ](#) [1812LS-223XJ](#) [1812LS-224XJ](#)