

# RJ45 Dual USB Jack with 10/100 Magnetic

ARJU31A

**RoHS**  
Compliant



17.40 x 30.40 x 26.10mm

## FEATURES:

- Tab up RJ 45 Jack + 2 USB
- Available with or without LED
- Suitable CAT 5 & 6 cable and UTP
- Comply IEEE 802.3ab
- LAN Magnetic with RJ45 Jack
- Suitable for RoHS compliant reflow

## APPLICATIONS:

- 10 and 100 Base-TX
- NIC, LoM and PC

## STANDARD SPECIFICATIONS

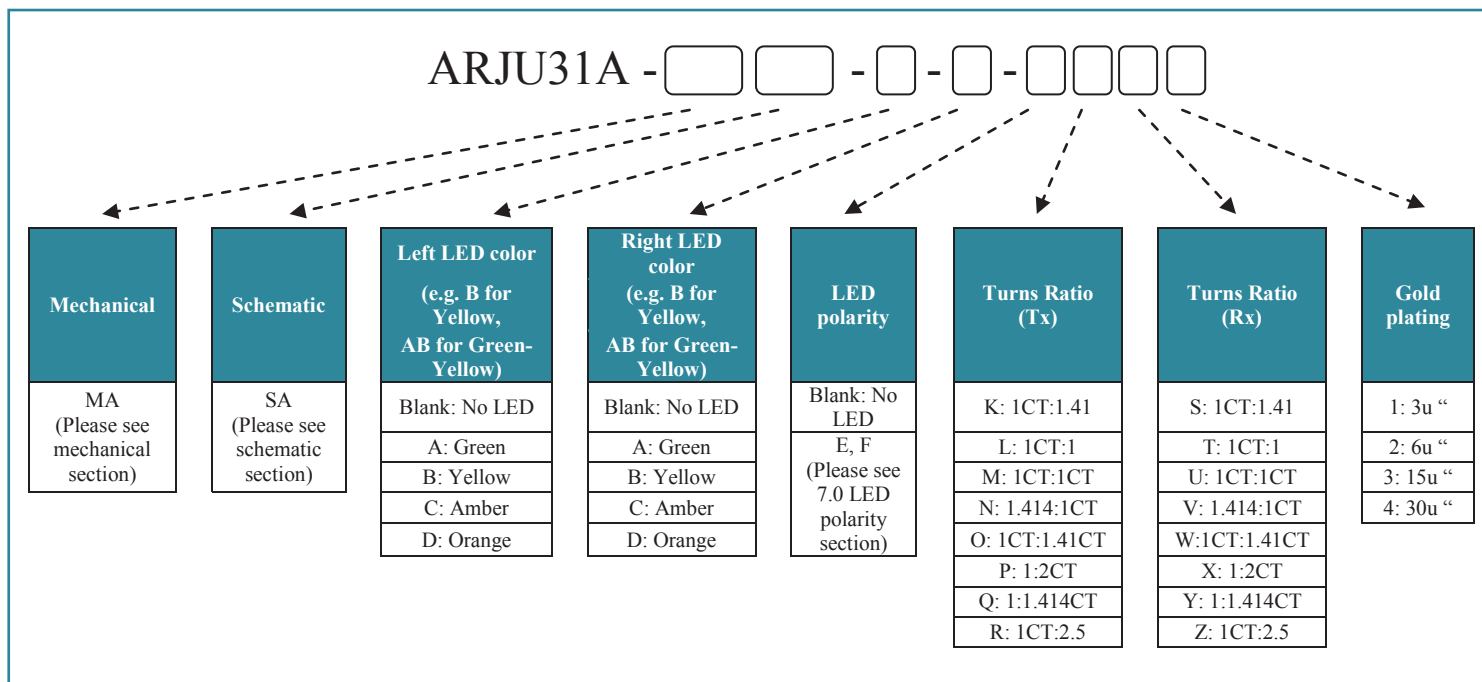
**Operating temperature range: 0°C to +70°C    Storage temperature range: -40°C to +85°C**

Part Number	Turns Ratio		EMI Fingers	LEDs	Insertion Loss (dB max)	Return Loss (dB TYP @100Ω±15Ω)		
	TX	RX				1 - 10 MHz	30 MHz	60 - 80 MHz
ARJU31A-MASA-AD-B-E-LU2	1CT:1	1CT:1CT	Yes	GO/Y	-1.0	-20	-16	-12

Part Number	Crosstalk (dB MIN)			Common Mode Rejection (dB TYP)		Hipot (Vrms) @ 60Hz
	1-10 MHz	32-60 MHz	60-100 MHz	1 - 50 MHz	50 - 130 MHz	
ARJU31A-MASA-AD-B-E-LU2	-40	-35	-30	-30	-20	1500

Contact Abracon for more custom configurations. See options to build a custom configuration.

## OPTIONS AND PART IDENTIFICATION

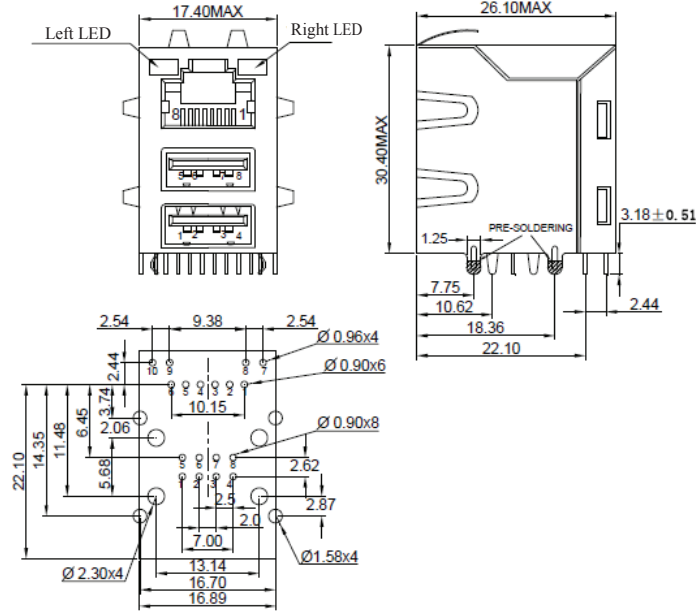




17.40 x 30.40 x 26.10mm

### MECHANICAL DIMENSIONS

MA

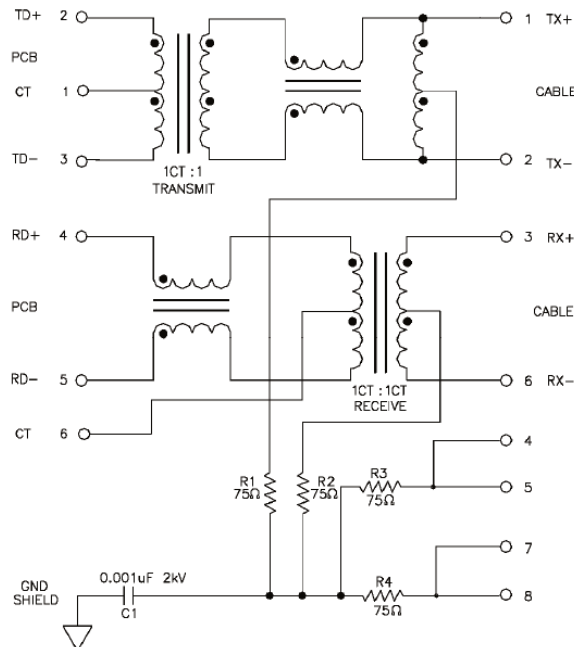


PC Board Layout  
Component Side Shown

Dimension: mm. All tolerances are  $\pm 0.25$  unless otherwise specified

### SCHEMATICS

SA



# RJ45 Dual USB Jack with 10/100 Magnetic

ARJU31A

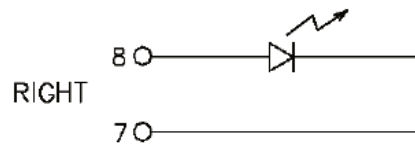
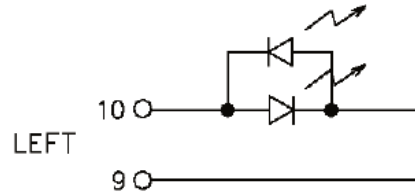
RoHS  
Compliant



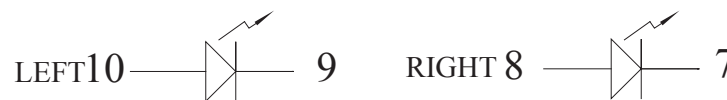
17.40 x 30.40 x 26.10mm

## LED POLARITY

E



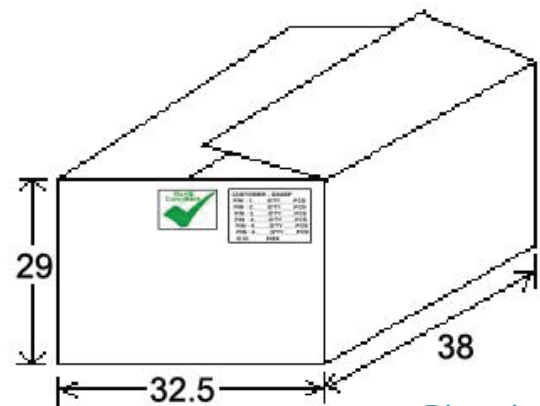
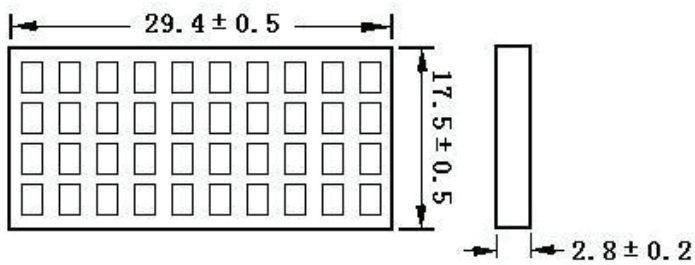
F



## PACKING: 40pcs/tray

Packaging material: PET

Outer carton unit 640 pcs/ 16 Trays/box



Dimensions: cm

ABRACON IS  
ISO 9001:2008  
CERTIFIED



Visit [www.abracon.com](http://www.abracon.com) for Terms & Conditions of Sale  
30332 Esperanza, Rancho Santa Margarita, California 92688  
tel 949-546-8000 | fax 949-546-8001 | [www.abracon.com](http://www.abracon.com)

Revised: 08.26.11

# RJ45 Dual USB Jack with 10/100 Magnetic

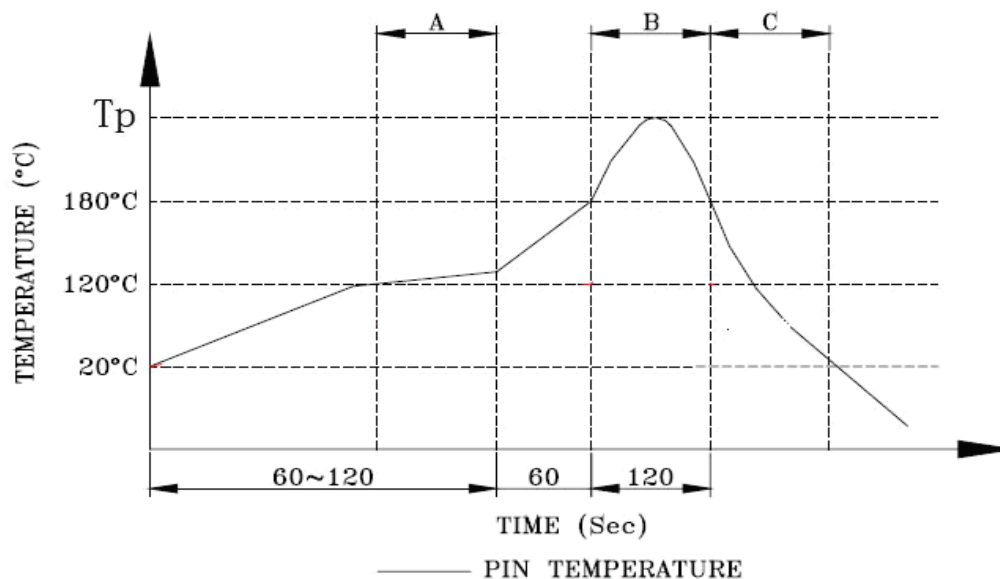
ARJU31A

RoHS  
Compliant



17.40 x 30.40 x 26.10mm

## REFLOW PROFILE:



Peak temperature(Tp) : 250± 10°C  
Peak temperature(Tp) time : 5sec max

**ATTENTION:** Abracon Corporation's products are COTS – Commercial-Off-The-Shelf products; suitable for Commercial, Industrial and, where designated, Automotive Applications. Abracon's products are not specifically designed for Military, Aviation, Aerospace, Life-dependant Medical applications or any application requiring high reliability where component failure could result in loss of life and/or property. For applications requiring high reliability and/or presenting an extreme operating environment, written consent and authorization from Abracon Corporation is required. Please contact Abracon Corporation for more information.

ABRACON IS  
ISO 9001:2008  
CERTIFIED



Visit [www.abracon.com](http://www.abracon.com) for Terms & Conditions of Sale  
30332 Esperanza, Rancho Santa Margarita, California 92688  
tel 949-546-8000 | fax 949-546-8001 | [www.abracon.com](http://www.abracon.com)

Revised: 08.26.11

## X-ON Electronics

Largest Supplier of Electrical and Electronic Components

*Click to view similar products for [Modular Connectors / Ethernet Connectors](#) category:*

*Click to view products by [ABRACON](#) manufacturer:*

Other Similar products are found below :

[8949-H88/06BLKA/SN](#) [74441-0010/BKN](#) [MP1010RX-1000](#) [MP44RX-1000](#) [PHP-6P6C-5](#) [GAX-3-66](#) [GAX-8-62](#) [GDCX-PA-66-50](#) [GDCX-PN-64](#) [GDCX-PN-66](#) [GDCX-PN-66-50](#) [GDLX-A-66](#) [GDLX-N-66](#) [GDLX-S-66](#) [GDLX-S-88K](#) [GDTX-S-88-50](#) [GDX-PA-1010](#) [GLX-N-1010M-BLK](#) [GLX-S-88M-BLK](#) [GMX-N-1010](#) [GMX-S-1010](#) [GMX-S-66](#) [GMX-SMT4-N-88](#) [GPX-2-64](#) [GSGX-N-2-88](#) [GSGX-N-4-88](#) [GSX-NS2-88-3.05](#) [GSX-NS2-88-3.05-50](#) [GSX-NS-88-3.05-50](#) [PT-108A-8C-UL](#) [PT-J951-8C](#) [PTS-J531-8CS-50UL](#) [1-1775629-2](#) [A-2014-0-4](#) [GWLX-S-88-GR](#) [GWLX-S9-88-YG](#) [DC-1021-8-WH-6](#) [1300530003](#) [1324640-4](#) [RJ11FTVC2G](#) [RJ11FTVC2N](#) [RJFTVX2SA1G](#) [132764-001](#) [1413235](#) [MP88X-1000](#) [MPS88RX-5000](#) [E5288-S000K3-L](#) [E5908-15A242-L](#) [155302-001](#) [AX100653](#)