

32.768kHz CERAMIC SMD LVC MOS CRYSTAL OSCILLATOR

ASAK

2.0 x 1.6 x 0.7mm

ASAK



ESD Sensitive



RoHS/RoHS II Compliant

Moisture Sensitivity Level (MSL) – This product is Hermetically Sealed and not Moisture Sensitive - MSL = N/A: Not Applicable

FEATURES:

- 32.768kHz in 2.0 x 1.6 x 0.7mm package
- Seam sealed package assures high reliability performance
- Low current consumption 240 μ A max.
- Suitable for RoHS compliant reflow

APPLICATIONS:

- Laptop
- Digital camera
- Wireless LAN
- Bluetooth and mobile communication
- LCD
- PDA and MP3 player
- Electricity, gas and water metering

STANDARD SPECIFICATIONS:

Parameters	Minimum	Typical	Maximum	Units	Notes
Frequency Range	32.768			kHz	
Operating Temperature	-10		+60	$^{\circ}$ C	See options
Storage Temperature	-55		+125	$^{\circ}$ C	
Overall Frequency Stability*	-100		+100	ppm	See options
Supply Voltage (Vdd)	2.97	3.3	3.63	V	Standard
	2.375	2.5	2.625		Option 1
	1.71	1.8	1.89		Option 2
Supply Current (I_{dd})		120	240	μ A	
Output Load			15	pF	LVC MOS
Output Voltage	V_{OH}	0.9*Vdd		V	
	V_{OL}		0.1*Vdd		
Tri-state Function	"1" ($V_{IH} \geq 0.7 * V_{dd}$) : Oscillation "0" ($V_{IL} \leq 0.3 * V_{dd}$) : Hi Z				
Aging	-3		+3	ppm	@+25 $^{\circ}$ C First year
Symmetry @1/2Vdd	40	50	60	%	Standard
	45	50	55		Option S
Start-up Time			5	ms	
Rise/Fall Time (T_r/T_f)			60	ns	
Disable Current			10	μ A	

OPTIONS AND PART IDENTIFICATION: (Left blank if standard)

ASAK - 32.768kHz - -

Supply Voltage	Operating Temp.*	Overall Freq. Stability	Symmetry	Packaging
Blank: 3.3V \pm 10%	Blank: -10 $^{\circ}$ C ~ +60 $^{\circ}$ C	Blank: \pm 100ppm	Blank: 40/60%	Blank: Bulk
1: 2.5 V \pm 5%	E: -20 $^{\circ}$ C ~ +70 $^{\circ}$ C	J: \pm 20ppm (**)	S: 45/55%	T: Tape & Reel
2: 1.8 V \pm 5%	F: -30 $^{\circ}$ C ~ +70 $^{\circ}$ C	R: \pm 25ppm		T3: 3k/reel
	N: -30 $^{\circ}$ C ~ +85 $^{\circ}$ C	K: \pm 30 ppm		
	L: -40 $^{\circ}$ C ~ +85 $^{\circ}$ C	C: \pm 50 ppm		

*Contact ABRACON for extended temperature range

** For standard temp. range -10 $^{\circ}$ C to + 60 $^{\circ}$ C only



ASAK

RoHS/RoHS II Compliant

➤ OUTLINE DIMENSIONS:

#1

(BOTTOM VIEW)

Recommended Land Pattern

Note: Recommend using an approximately 0.01uF bypass capacitor between PIN 2 and 4.

PIN #	Function
1	Enable/Disable
2	GND
3	Output
4	Vdd

Dimensions: mm

➤ REFLOW PROFILE:

Zone	Description	Temperature	Time
1	Preheat	$T_{SMIN} \sim T_{SMAX}$ 170°C ~ 190°C	60 ~ 120 sec.
2	Reflow	T_L 220°C±10°C	30 sec. MAX
3	Peak heat	T_P 260°C	10 sec. MAX



ASAK

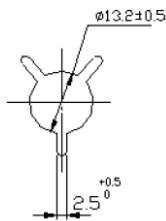
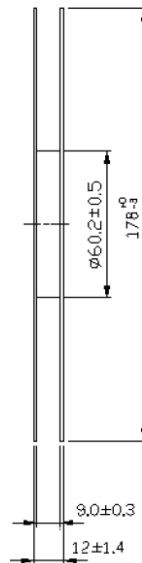
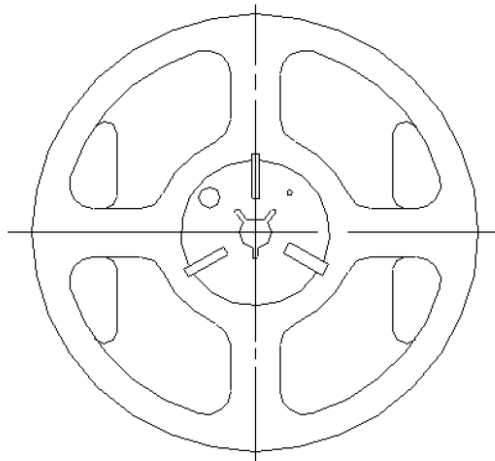
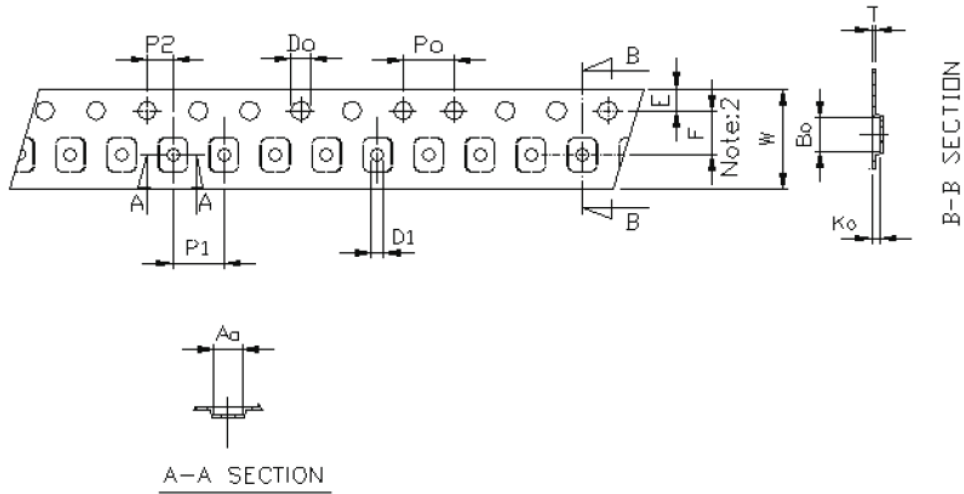
2.0 x 1.6 x 0.7mm

ASAK

RoHS/RoHS II Compliant

TAPE & REEL:

T= Tape and reel (1,000pcs/reel)
 T3= Tape and reel (3,000pcs/reel)



Symbol	Dimensions (mm)	Symbol	Dimensions (mm)
A0	1.85±0.10	D0	1.50±0.05
B0	2.25±0.10	D1	1.05±0.05
K0	0.95±0.10	E	1.75±0.10
P0	4.0±0.10	F	3.50±0.05
P1	4.0±0.10	W	8.0±0.20
P2	2.0±0.05	T	0.25±0.05

Dimensions: mm

ATTENTION: Abracon Corporation's products are COTS – Commercial-Off-The-Shelf products; suitable for Commercial, Industrial and, where designated, Automotive Applications. Abracon's products are not specifically designed for Military, Aviation, Aerospace, Life-dependant Medical applications or any application requiring high reliability where component failure could result in loss of life and/or property. For applications requiring high reliability and/or presenting an extreme operating environment, written consent and authorization from Abracon Corporation is required. Please contact Abracon Corporation for more information.

X-ON Electronics

Largest Supplier of Electrical and Electronic Components

Click to view similar products for [Standard Clock Oscillators](#) category:

Click to view products by [ABRACON](#) manufacturer:

Other Similar products are found below :

[601252](#) [F335-12](#) [F335-25](#) [F535L-33.333](#) [F535L-50](#) [ASV-20.000MHZ-LR-T](#) [ECS-2018-160-BN-TR](#) [MXO45HS-2C-66.6666MHZ](#)
[SiT8209AI-32-33E-125.000000](#) [SIT8918AA-11-33S-50.000000G](#) [SM4420TEV-40.0M-T1K](#) [F335-24](#) [F335-40](#) [F535L-10](#) [F535L-12](#) [F535L-16](#) [F535L-24](#) [F535L-27](#) [F535L-48](#) [PE7744DW-100.0M](#) [CSX-750FCC14745600T](#) [ASF1-3.686MHZ-N-K-S](#) [XO57CTECNA3M6864](#) [ECS-2100A-147.4](#) [601251](#) [EP16E7E2H26.000MTR](#) [SIT8918AA-11-33S-16.000000G](#) [XO3003](#) [9120AC-2D2-33E212.500000](#) [9102AI-243N25E100.00000](#) [8208AC-82-18E-25.00000](#) [ASDK2-32.768KHZ-LR-T3](#) [8008AI-72-XXE-24.545454E](#) [8004AC-13-33E-133.33000X](#) [AS-4.9152-16-SMD-TR](#) [ASFL1-48.000MHZ-LC-T](#) [SIT8920AM-31-33E-25.0000](#) [DSC1028DI2-019.2000](#) [9121AC-2C3-25E100.00000](#) [9102AI-233N33E100.00000X](#) [9102AI-233N25E200.00000](#) [9102AI-232H25S125.00000](#) [9102AI-133N25E200.00000](#) [9102AC-283N25E200.00000](#) [9001AC-33-33E1-30.000](#) [XLH536125.000JS4I](#) [3921AI-2CF-33NZ125.000000](#) [5730-1SF](#) [PXA000010](#) [SIT1602BC-83-33E-10.000000Y](#)