

32.768kHz CMOS CERAMIC SMD CRYSTAL OSCILLATOR



3.2 x 2.5 x 0.9 mm

ASHEK SERIES



ESD Sensitive



RoHS/RoHS II compliant

MSL = N/A: Not Applicable

FEATURES:

- Ultra low uA current consumption with CMOS output
- Miniature ceramic package (3.2 x 2.5 x 0.9mm)
- Start up time less than 1 sec with supply voltage 1.5 to 5.0V
- Tri-state function
- Pb-free reflow capable

APPLICATIONS:

- General purpose clock generator for digital systems
- Clock drivers for Real Time Clocks
- Timekeeping in network servers and computers
- Electricity, gas and water metering
- Portable field communication
- Mobile phone
- Clock & Data recovery
- CCD clock for VTR camera
- Computers and peripherals
- Portable MP3 players & games

STANDARD SPECIFICATIONS:

Parameters	Minimum	Typical	Maximum	Units	Notes
Frequency	32.768			kHz	
Operating Temperature	-20		+70	°C	See options
Storage Temperature	-55		+125	°C	
Frequency Tolerance @ +25°C	-15	+5	+25	ppm	
Frequency Stability	-120		+10	ppm	- 20 to + 70 °C; referenced to frequency measured @ +25°C See options
Supply Voltage (V _{dd})	3.135	3.3	3.465	V	Standard
	4.75	5.0	5.25		Option 2
	2.66	2.8	2.94		Option 3
	1.71	1.8	1.89		Option 4
	1.425	1.5	1.575		Option 5
Supply Current (I _{dd})		0.9	1.5	uA	no load, V _{dd} =+ 3.3V
		1.8	2.5		no load, V _{dd} =+ 5.0V
		0.8	1.5		no load, V _{dd} =+ 2.8V
		0.6	1.5		no load, V _{dd} =+ 1.8V
		0.5	1.5		no load, V _{dd} =+ 1.5V
Output Load			15	pF	CMOS
Output Voltage	V _{OH}	V _{dd} -0.4		V	
	V _{OL}		0.4		
Tri-state function	"1" (VIH≥0.8*V _{dd} or open) : Oscillation "0" (VIH<0.2*V _{dd}) : Hi Z				
Aging	-5.0		+5.0	ppm	@+25°C First year
Symmetry @1/2V _{dd}	40	50	60	%	Standard
Start-up Time			1	s	0.9*V _{dd} @ +25°C
Rise/Fall Time (T _r /T _f)			200	ns	

32.768kHz CMOS CERAMIC SMD CRYSTAL OSCILLATOR



3.2 x 2.5 x 0.9 mm

ASHEK SERIES



RoHS/RoHS II compliant

OPTIONS & PART IDENTIFICATION:

(Left blank if standard)

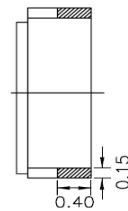
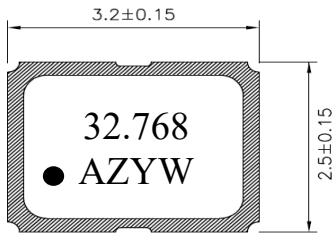
ASHEK -32.768kHz - -

Supply Voltage	
Blank:	3.3V
2:	5.0V
3:	2.8V
4:	1.8V
5:	1.5V

Frequency Temp Characteristics / Stability	
Blank:	-20°C to +70°C / -120 to +10 ppm
L:	-40°C to +85°C / -200 to +10 ppm

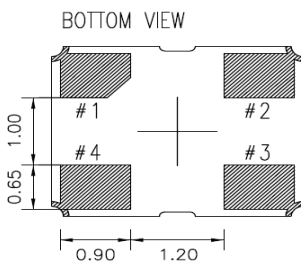
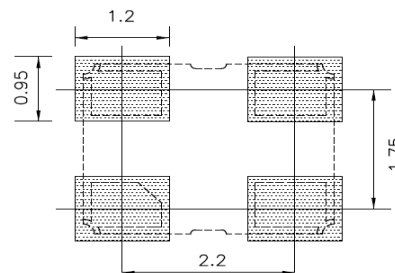
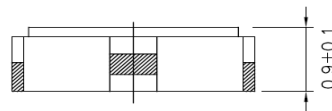
Packaging	
Blank:	Bulk
T:	Tape and Reel (1kpcs)
T3:	Tape and Reel (3kpcs)

OUTLINE DIMENSION:



PIN #	Name
1	Tri-state or NC
2	GND
3	Output
4	Vdd

Note: Recommend using an approximately 0.01uF bypass capacitor between PIN 2 and 4.



Dimensions: mm

32.768kHz CMOS CERAMIC SMD CRYSTAL OSCILLATOR

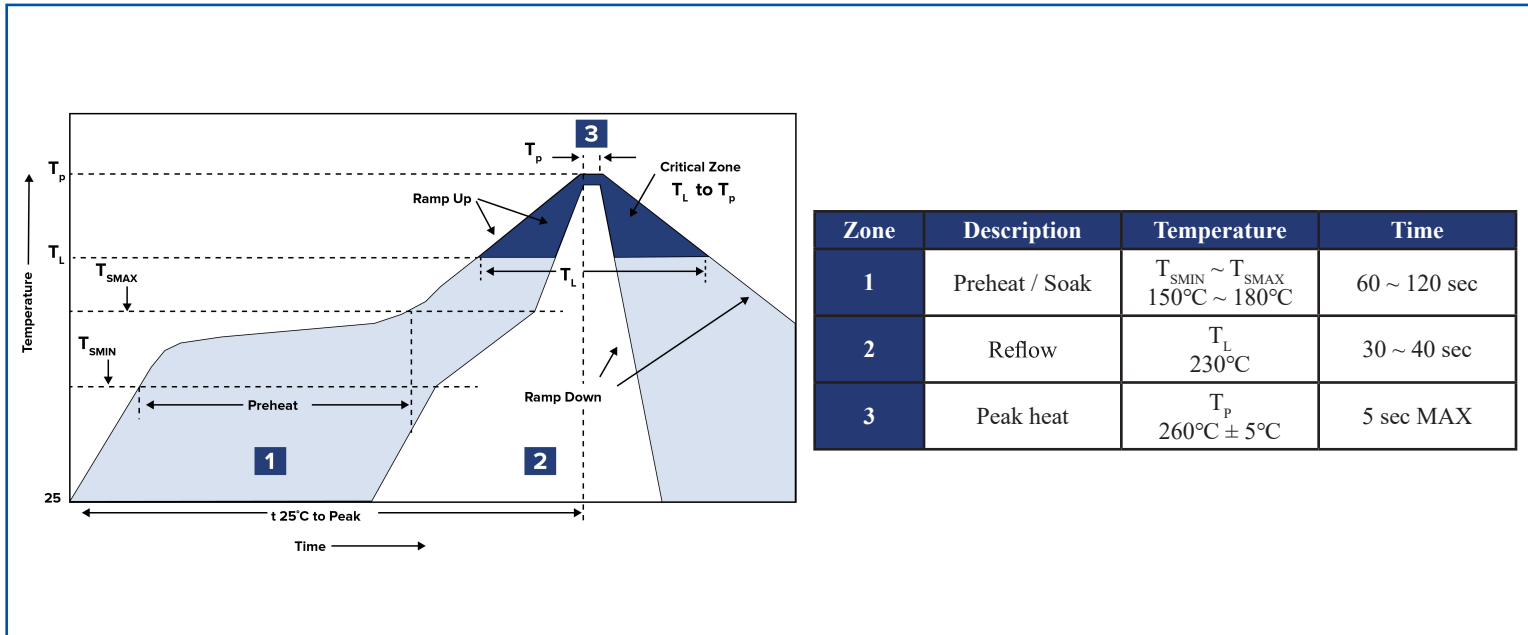


3.2 x 2.5 x 0.9 mm

ASHEK SERIES



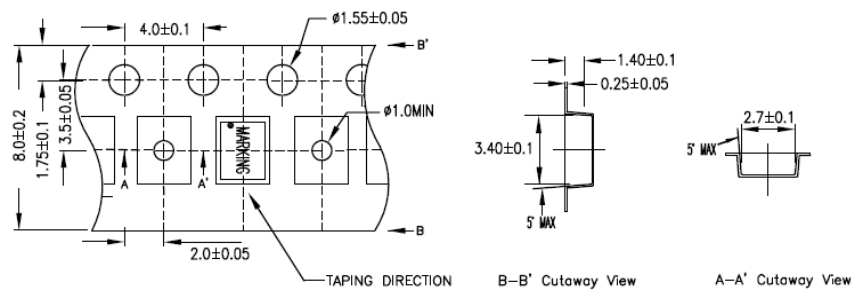
REFLOW PROFILE:



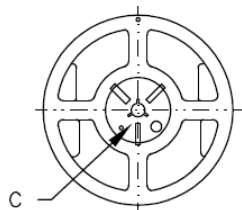
TAPE & REEL:

T= Tape and reel (1,000pcs/reel)
T3= Tape and reel (3,000pcs/reel)

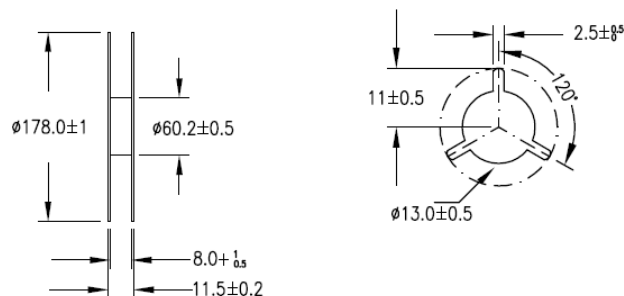
1. CARRIER TYPE



2. REEL



C. ENLARGE



Dimensions: mm



5101 Hidden Creek Lane Spicewood TX 78669
Phone: 512-371-6159 | Fax: 512-351-8858
For terms and conditions of sale please visit:
www.abracon.com

REVISED: 12.05.2018

ABRACON IS
ISO9001-2015
CERTIFIED

X-ON Electronics

Largest Supplier of Electrical and Electronic Components

Click to view similar products for [Abracon](#) manufacturer:

Other Similar products are found below :

[AISC-1812H-470K-T](#) [ASGTX-BLANK](#) [ABLJO-V-155.520MHZ](#) [ABLNO-122.880MHZ](#) [ABLNO-V-96.000MHZ](#) [ABLS-10.240MHZ-B4-T](#)
[ABM3B-26.000MHZ-10-D-1-G-T](#) [AOCJY3-40.000MHZ-E](#) [ARRSN5-868.000MHZ](#) [ASEMB-80.000MHZ-XY-T](#) [ASGTX-P-1.000GHz-1](#)
[AST3TQ-T-24.576MHZ-50-C](#) [ASTMLPD-24.000MHZ-LJ-E-T](#) [ABLJO-V-150.000MHZ](#) [ABM2-16.000MHZ-D4Y-T](#) [ABM8G-12.000MHZ-](#)
[B4Y-T3](#) [AIRD-06-101K](#) [AOCJY6-10.000MHZ-1](#) [ASFLMB-48.000MHZ-LY-T](#) [ASG-C-V-A-50.000MHZ](#) [ASHEK2-32.768KHZ-LT](#) [AXS-](#)
[5032-04-12](#) [ABM8X-101-24.000MHZ-T](#) [AIML-0805-470K-T](#) [AOCJY3A-10.000MHZ-E](#) [ASFL1-50.000MHZ-EK-T](#) [AOCTQ5-X-](#)
[10.000MHZ-M10-SW](#) [ASPI-0705-820K-T](#) [AMPMAFB-19.2000T](#) [ABL-10.000MHZ-D-T](#) [ABM3B-27.120MHZ-10-D2H-T](#) [AOC2012XAJC-](#)
[12.8000C](#) [EP1400SJETTSC-11.0592M](#) [EP1400SJETTSC-2.000M](#) [EHH1100TS-13.560M](#) [ABL-16.384MHZ-B2](#) [AIRD-01-680K](#) [AOCJY-](#)
[10.000MHZ](#) [AOCJY2-10.000MHZ](#) [AOCJY-38.880MHZ-F](#) [AOCJY3A-100.000MHZ-E](#) [ASG2-D-X-A-1000.000MHZ](#) [ASG-D-X-A-](#)
[200.000MHZ](#) [ASGTX-P-1.500GHz-1](#) [AXS-3225-04-04](#) [AXS-3225-04-10](#) [AXS-5032-04-02](#) [AXS-7550-06-05](#) [ABLJO-92.160MHZ](#) [ABLS-](#)
[6.7458MHZ-20-R60-D-T](#)